

FROM THE FOUNDER OF THE #VIKISEWS BRAND

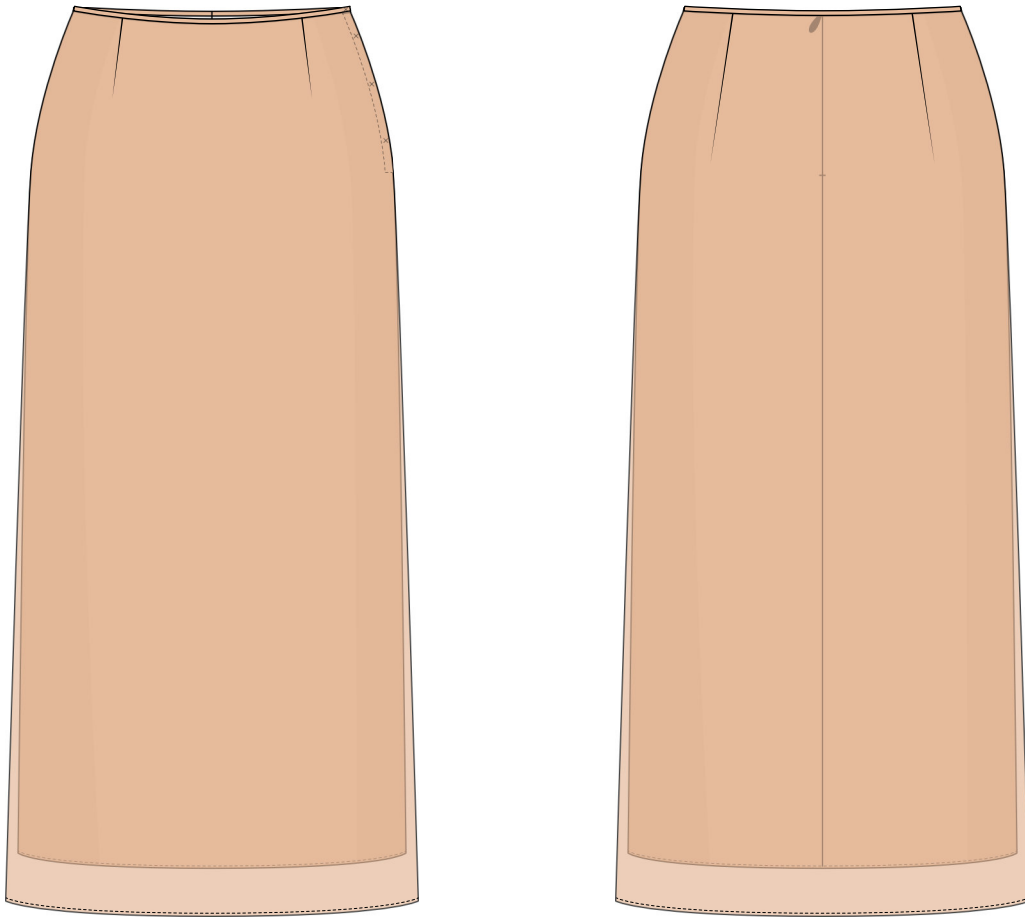


Back in 2016, when I was working on my first set of sewing instructions, I was trying to write them in such a way that even a complete beginner could easily understand and use them to create their very first garment. These instructions laid the foundation for the Vikisews brand, its vision and its mission. I wanted to create modern patterns with the utmost detailed and clear instructions.

Now, with each new collection we are constantly improving our instructions, amending them and adding more relevant details. By the time the final product reaches you, our drafters, correctors, and editors would have spent weeks perfecting every word and every photograph. If you compile a few of our instructions together, you will get a sewing manual that will assist you in sewing all kinds of garments at any difficulty level.

And I would be very happy if these instructions helped you to turn your hobby into a lifelong passion... Enjoy the process! Create your ultimate dream wardrobe! Wear your garments proudly for years to come!

If you have any questions, please contact us at info@vikisews.com — we are always there to help.



AYA PATTERN DESCRIPTION

Aya is a semi-fitted, straight-cut skirt, sitting 5 cm (2") below the natural waistline and slightly flared at the bottom. The skirt features darts both at the front and back and has no waistband. The waist edge is finished with binding. The Aya pattern includes both top skirt and bottom skirt patterns. The bottom skirt fastens with an invisible zipper in the center back seam, while the top skirt has no center back seam and fastens with sew-on snaps and a button in the side seam. Both skirts are below-knee length.



IMPORTANT!

The contents of this pattern are copyright protected and belong exclusively to Vikisews. You may use Vikisews patterns for personal use. It is prohibited to share Vikisews patterns and instructions with third parties, as well as to publish patterns and instructions online for public access. **Non-compliance with the mentioned rules is a violation of the US copyright law and may result in civil liability and criminal prosecution.**

You may use Vikisews patterns for commercial use, to sew custom-made garments and/or create fashion collections, on the condition that the patterns are solely used in a manufacturing setting and are not further shared with individuals.

TOTAL EASE ALLOWANCE

TOP SKIRT			BOTTOM SKIRT		
	Waistline ease (estimated)	Hipline ease		Waistline ease (estimated)	Hipline ease
cm	7.8–11	6.8	cm	7.4–10.4	4
inches	3 1/8–4 3/8	2 5/8	inches	2 7/8–4 1/8	1 5/8

GARMENT LENGTH

Height, cm	Center back length (top skirt), cm	Center back length (bottom skirt), cm
1 (154–160)	60–61.2	57–58.2
2 (162–168)	64–65.2	61–62.2
3 (170–176)	68–69.2	65–66.2
4 (178–184)	72–73.2	69–70.2

Height, ft	Center back length (top skirt), in	Center back length (bottom skirt), in
1 (5'1"–5'3")	23 5/8–24 1/8	22 1/2–22 7/8
2 (5'4"–5'6")	25 1/4–25 5/8	24–24 1/2
3 (5'7"–5'9")	26 3/4–27 1/4	25 5/8–26 1/8
4 (5'10"–6'1")	28 3/8–28 7/8	27 1/8–27 5/8

SUGGESTED FABRIC

To sew this skirt, choose medium-weight, non-stretch or low-stretch, opaque or semi-sheer dress-weight fabrics made of natural, artificial, synthetic fibers, or blends.

The following fabrics are recommended: batiste, organza, natural or artificial silk, chiffon.

The top skirt in the photo is made of organza. The fabric is medium weight, non-stretch, and semi-sheer. The fiber content is 100% polyester. The fabric weight is 45 g/m².

The bottom skirt in the photo is made of artificial silk. The fabric is medium weight, soft, and low-stretch. The fiber content is 100% polyester. The fabric weight is 190 g/m².

FABRIC AND NOTIONS REQUIREMENTS

1. Top skirt

Main fabric 1, 140 cm wide, with a directional print/nap, in meters:

Height, cm	Size									
	34	36	38	40	42	44	46	48	50	52
1 (154–160)	0.9	0.95	1	1.05	1.1	1.15	1.2	1.25	1.3	1.35
2 (162–168)	0.9	1	1.05	1.1	1.15	1.25	1.3	1.35	1.4	1.45
3 (170–176)	0.95	1.05	1.1	1.15	1.2	1.3	1.35	1.4	1.45	1.5
4 (178–184)	1	1.05	1.15	1.2	1.25	1.35	1.4	1.45	1.55	1.6

Main fabric 1, 55" wide, with a directional print/nap, in yards:

Height, ft	Size									
	34	36	38	40	42	44	46	48	50	52
1 (5'1"–5'3")	1	1	1 1/8	1 1/8	1 1/4	1 1/4	1 1/4	1 3/8	1 3/8	1 1/2
2 (5'4"–5'6")	1	1 1/8	1 1/8	1 1/4	1 1/4	1 1/4	1 3/8	1 1/2	1 1/2	1 5/8
3 (5'7"–5'9")	1	1 1/8	1 1/4	1 1/4	1 1/4	1 3/8	1 1/2	1 1/2	1 5/8	1 5/8
4 (5'10"–6'1")	1 1/8	1 1/8	1 1/4	1 1/4	1 3/8	1 1/2	1 1/2	1 5/8	1 3/4	1 3/4

2. Bottom skirt

Main fabric 2, 140 cm wide, with a directional print/nap, in meters:

Height, cm	Size									
	34	36	38	40	42	44	46	48	50	52
1 (154–160)	0.8	0.85	0.95	1	1.1	1.15	1.2	1.3	1.25	1.25
2 (162–168)	0.85	0.9	1	1.05	1.1	1.2	1.25	1.3	1.3	1.3
3 (170–176)	0.9	0.95	1	1.1	1.15	1.2	1.3	1.35	1.4	1.4
4 (178–184)	0.9	1	1.05	1.1	1.2	1.25	1.35	1.4	1.45	1.45

Main fabric 2, 55" wide, with a directional print/nap, in yards:

Height, ft	Size									
	34	36	38	40	42	44	46	48	50	52
1 (5'1"–5'3")	7/8	7/8	1	1 1/8	1 1/4	1 1/4	1 1/4	1 3/8	1 3/8	1 3/8
2 (5'4"–5'6")	7/8	1	1 1/8	1 1/8	1 1/4	1 1/4	1 3/8	1 3/8	1 3/8	1 3/8
3 (5'7"–5'9")	1	1	1 1/8	1 1/4	1 1/4	1 1/4	1 3/8	1 1/2	1 1/2	1 1/2
4 (5'10"–6'1")	1	1 1/8	1 1/8	1 1/4	1 1/4	1 3/8	1 1/2	1 1/2	1 5/8	1 5/8

Main fabric 2, 150 cm wide, with a directional print/nap, in meters:

Height, cm	Size									
	34	36	38	40	42	44	46	48	50	52
1 (154–160)	0.7	0.75	0.85	0.9	1	1.05	1.1	1.2	1.25	1.3
2 (162–168)	0.75	0.8	0.9	0.95	1	1.1	1.15	1.2	1.3	1.35
3 (170–176)	0.8	0.85	0.9	1	1.05	1.1	1.2	1.25	1.3	1.4
4 (178–184)	0.8	0.9	0.95	1	1.1	1.15	1.25	1.3	1.35	1.45

Main fabric 2, 59" wide, with a directional print/nap, in yards:

Height, ft	Size									
	34	36	38	40	42	44	46	48	50	52
1 (5'1"–5'3")	3/4	7/8	7/8	1	1 1/8	1 1/8	1 1/4	1 1/4	1 3/8	1 3/8
2 (5'4"–5'6")	7/8	7/8	1	1	1 1/8	1 1/4	1 1/4	1 1/4	1 3/8	1 1/2
3 (5'7"–5'9")	7/8	7/8	1	1 1/8	1 1/8	1 1/4	1 1/4	1 3/8	1 3/8	1 1/2
4 (5'10"–6'1")	7/8	1	1	1 1/8	1 1/4	1 1/4	1 3/8	1 3/8	1 1/2	1 5/8

IMPORTANT! When purchasing fabric, please account for shrinkage and buy 5% more than required.

3. Stitched bias-cut fusible stay tape with stitch reinforcement, 1.5 cm (5/8") wide — 0.4 m (3/8 yd).
4. One invisible zipper, 18 cm (7 1/8") long, for all sizes in all heights.
5. One button, 7 mm (just over 1/4") in diameter.
6. Four sew-on snaps, 7 mm (just over 1/4") in diameter, for the invisible closure.
7. Matching thread — 5 spools (1 spool for the sewing machine + 4 spools for the overlocker).

TOOLS AND EQUIPMENT

- sewing machine for construction
- overlocker for finishing raw edges. This may be replaced with a stretch overlock stitch or a zigzag stitch on the sewing machine (overlock or zigzag stitch width 2–3 mm, stitch length 2.5 mm)
- invisible zipper foot for the sewing machine.

PATTERN PIECES LIST

1. Top skirt

From main fabric 1:

- front — cut 1 on fold
- back — cut 1 on fold
- waist edge binding — cut 1.

2. Bottom skirt

From main fabric 2:

- front — cut 1 on fold
- back — cut 2
- waist edge binding — cut 1.

SEAM ALLOWANCES

All pattern pieces include seam allowances as follows:

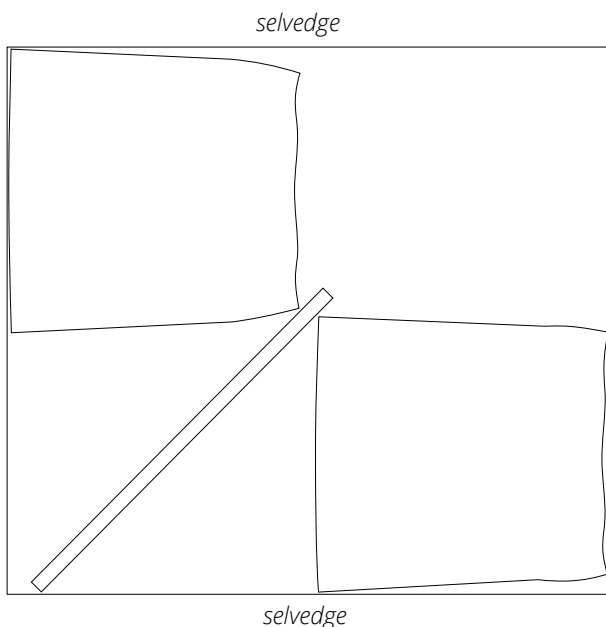
- garment waist edge — no seam allowance
- all other edges — 1 cm (3/8").

Take this into account when laying out pattern pieces on the fabric.

CUTTING LAYOUT

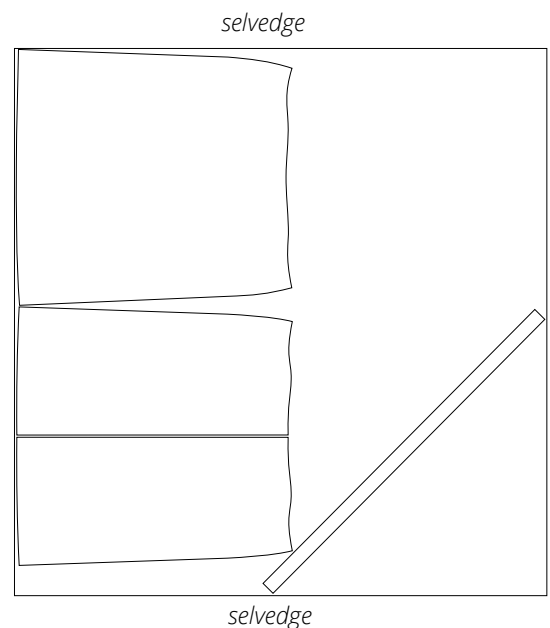
Top skirt

Main fabric 1, 140 cm (55") wide, with a directional print/nap, cut on a single layer, for all sizes in all heights



Bottom skirt

Main fabric 2, 140 cm (55") wide, with a directional print/nap, cut on a single layer, for sizes 34–48 in all heights; main fabric 2, 150 cm (59") wide, with a directional print/nap, cut on a single layer, for all sizes in all heights





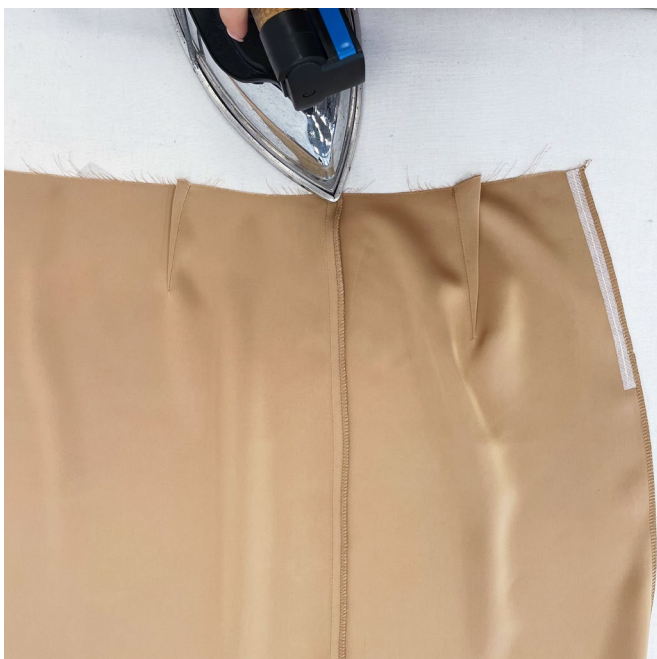
Place the front and back pieces right sides together, align the side edges. Match the notches and pin.

Stitch on the sewing machine, backstitching at the beginning and end of each seam.



Finish the seam allowances on the overlocker, keeping the front piece facing up.

Press the seam flat.



Press the seam allowances towards the back piece.