

FROM THE FOUNDER OF THE #VIKISEWS BRAND



Back in 2016, when I was working on my first set of sewing instructions, I was trying to write them in such a way that even a complete beginner could easily understand and use them to create their very first garment. These instructions laid the foundation for the Vikisews brand, its vision and its mission. I wanted to create modern patterns with the utmost detailed and clear instructions.

Now, with each new collection we are constantly improving our instructions, amending them and adding more relevant details. By the time the final product reaches you, our drafters, correctors, and editors would have spent weeks perfecting every word and every photograph. If you compile a few of our instructions together, you will get a sewing manual that will assist you in sewing all kinds of garments at any difficulty level.

And I would be very happy if these instructions helped you to turn your hobby into a lifelong passion... Enjoy the process! Create your ultimate dream wardrobe! Wear your garments proudly for years to come!

If you have any questions, please contact us at info@vikisews.com — we are always there to help.



FANCY PATTERN DESCRIPTION

Fancy is a close-fitting dress with a curved waist seam. It is made of knit fabric and faux leather. The dress features shaped inserts at the front and back. The back skirt has a center seam and darts. The round neckline is finished with binding. The set-in sleeves are long and close-fitting. The dress closes with an invisible zipper in the left side seam. Fancy is above-knee length.



IMPORTANT!

The contents of this pattern are copyright protected and belong exclusively to Vikisews. You may use Vikisews patterns for personal use. It is prohibited to share Vikisews patterns and instructions with third parties, as well as to publish patterns and instructions online for public access. **Non-compliance with the mentioned rules is a violation of the US copyright law and may result in civil liability and criminal prosecution.**

You may use Vikisews patterns for commercial use, to sew custom-made garments and/or create fashion collections, on the condition that the patterns are solely used in a manufacturing setting and are not further shared with individuals.

TOTAL EASE ALLOWANCE

	Bust ease	Waistline ease	Hipline ease	Upper arm ease
cm	-20.5 to -15.5	2.4–3.9	2–5.5	-1.9 to -0.2
inches	-8 1/8 to -6 1/8	1–1 1/2	3/4–2 1/8	-3/4 to -1/8

GARMENT LENGTH, SLEEVE LENGTH

Height, cm	Back length from waist down (estimated), cm	Sleeve length, cm
1 (154–160)	40.6	61.8
2 (162–168)	43.6	63.7
3 (170–176)	46.6	65.6
4 (178–184)	49.6	67.5

Height, ft	Back length from waist down (estimated), in	Sleeve length, in
1 (5'1"–5'3")	16	24 3/8
2 (5'4"–5'6")	17 1/8	25 1/8
3 (5'7"–5'9")	18 3/8	25 7/8
4 (5'10"–6'1")	19 1/2	26 5/8

SUGGESTED FABRIC

To sew the bodice of the dress, choose soft, medium weight, medium-stretch or high-stretch knit fabrics made of natural fibers, artificial fibers, blends, and synthetics.

The following fabrics are recommended: sweater knits, jersey knits, rib knits.

The stretch factor must not be less than 1.2.

Attention! We recommend using only stretchy fabrics for this dress.

You can determine the stretch factor of the fabric yourself. Mark 10 cm (4") along the crosswise grain of the fabric, lay a ruler next to the marked section, and stretch the fabric. Divide the measurement you get by 10.

To sew the skirt of the dress, choose soft, medium-stretch, medium weight fabrics made of natural fibers, artificial fibers, blends, and synthetics.

The following fabrics are recommended: faux leather with elastane content, spandex.

The dress in the photo is made of two fabrics. The top of the dress is made of sweater knit. The fabric is medium weight, soft, and stretchy. The fiber content is 85% viscose, 10% polyester, and 5% elastane. The fabric weight is 170 g/m².

The skirt of the dress is made of faux leather with elastane content. The fabric is medium weight, soft, and stretchy. The fiber content is 95% polyester and 5% elastane. The fabric weight is 400 g/m².

FABRIC AND NOTIONS REQUIREMENTS

1. Main fabric (knit), 140 cm wide, with a directional print/nap, in meters:

Height, cm	Size								
	34-36	38	40	42	44	46	48	50	52
1 (154-160)	0.65	0.7	0.8	0.8	0.85	0.85	0.85	0.85	0.9
2 (162-168)	0.7	0.7	0.85	0.85	0.85	0.85	0.9	0.9	0.9
3 (170-176)	0.7	0.7	0.85	0.85	0.85	0.9	0.9	0.9	0.95
4 (178-184)	0.75	0.75	0.85	0.9	0.9	0.9	0.9	0.95	0.95

Main fabric (knit), 55" wide, with a directional print/nap, in yards:

Height, ft	Size					
	34-38	40	42-44	46	48-50	52
1 (5'1"-5'3")	3/4	7/8	7/8	7/8	7/8	1
2 (5'4"-5'6")	3/4	7/8	7/8	7/8	1	1
3 (5'7"-5'9")	3/4	7/8	7/8	1	1	1
4 (5'10"-6'1")	7/8	7/8	1	1	1	1

2. Main fabric (faux leather), 150 cm wide, with a directional print/nap, in meters:

Height, cm	Size	
	34-46	48-52
1 (154-160)	0.65	0.65
2 (162-168)	0.7	0.7
3 (170-176)	0.75	0.75
4 (178-184)	0.75	0.75

Main fabric (faux leather), 59" wide, with a directional print/nap, in yards:

Height, ft	Size	
	34-46	48-52
1 (5'1"-5'3")	3/4	3/4
2 (5'4"-5'6")	3/4	3/4
3 (5'7"-5'9")	7/8	7/8
4 (5'10"-6'1")	7/8	7/8

IMPORTANT! When purchasing fabric, please account for shrinkage and buy 5% more than required.

3. Clear elastic, 1 cm wide, in centimeters:

Height, cm	Size									
	34	36	38	40	42	44	46	48	50	52
1 (154–160)	115	118	121	124	127	130	133	136	139	143
2 (162–168)	118	121	124	127	129	133	136	139	142	145
3 (170–176)	121	124	126	129	132	135	138	141	144	147
4 (178–184)	124	127	129	132	135	138	141	144	147	150

Clear elastic, 3/8" wide, in inches:

Height, ft	Size									
	34	36	38	40	42	44	46	48	50	52
1 (5'1"–5'3")	45 1/4	46 1/2	47 5/8	48 7/8	50	51 1/8	52 3/8	53 1/2	54 3/4	56 1/4
2 (5'4"–5'6")	46 1/2	47 5/8	48 7/8	50	50 3/4	52 3/8	53 1/2	54 3/4	55 7/8	57 1/8
3 (5'7"–5'9")	47 5/8	48 7/8	49 5/8	50 3/4	52	53 1/8	54 3/8	55 1/2	56 3/4	57 7/8
4 (5'10"–6'1")	48 7/8	50	50 3/4	52	53 1/8	54 3/8	55 1/2	56 3/4	57 7/8	59

4. Fusible web tape, 1 cm (3/8") wide — 4 m (4 3/8 yd)

5. Fusible web tape, 2.5 cm (1") wide, for hemming the skirt — 1.5 m (1 5/8 yd)

6. One invisible zipper, 45 cm (17 3/4") long, for all sizes in all heights

7. Matching thread — 5 spools (1 spool for the sewing machine + 4 spools for the overlocker / 3 spools for the coverstitch machine)

TOOLS AND EQUIPMENT

- sewing machine for construction
- overlocker for construction and finishing raw edges. This may be replaced with a stretch overlock stitch or a zigzag stitch on the sewing machine (overlock or zigzag stitch width 2–3 mm, stitch length 2.5 mm)
- coverstitch or coverlock machine for finishing the garment hem. It can be replaced with a twin needle on a regular sewing machine that can do a zigzag stitch
- one-sided foot for the sewing machine to attach the invisible zipper

IMPORTANT! We recommend using specialty needles when working with knit fabrics (for example, STRETCH, SUPER STRETCH, JERSEY, etc.). When sewing, a ball-shaped needle point pushes the knit loops apart without piercing the threads.

PATTERN PIECES LIST

1. From main fabric:

- front bodice — cut 1 on fold
- front insert — cut 2
- back bodice — cut 1 on fold
- back insert — cut 2
- sleeve — cut 2
- neckline binding — cut 1
- front skirt — cut 1 on fold*
- back skirt — cut 2*

Attention! If the garment is made of two types of fabrics, the pieces marked with an asterisk (*) are cut from faux leather.

IMPORTANT! Don't forget to transfer all pattern markings and notches onto the fabric.

SEAM ALLOWANCES

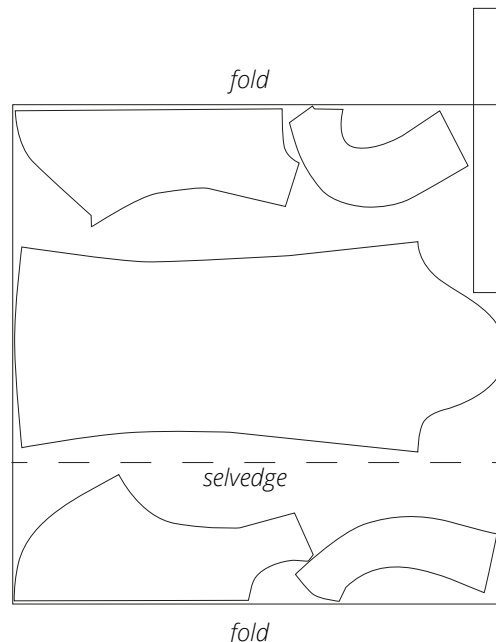
All pattern pieces include seam allowances as follows:

- hem allowance on the front skirt — 2.5 cm (1")
- hem allowance on the back skirt — 2.5 cm (1")
- sleeve hem allowance — 2 cm (3/4")
- all other edges — 1 cm (3/8")

Take this into account when laying out pattern pieces on the fabric.

CUTTING LAYOUT

Main fabric (knit), 140 cm (55") wide, with a directional print/nap, cut with two folds, for sizes 34–38 in all heights



Attention! The neckline binding piece is cut on a single layer out of leftover fabric.



On the assembled back bodice piece, press the seam allowances towards the back bodice.



Press the sleeve seam allowances towards the back part of the sleeve.



Staystitch along the armscye edges on the assembled front and back bodice pieces to prevent them from stretching out. Use a 3.5–4 mm stitch length and do not backstitch.