

# FROM THE FOUNDER OF THE #VIKISEWS BRAND

---



Back in 2016, when I was working on my first set of sewing instructions, I was trying to write them in such a way that even a complete beginner could easily understand and use them to create their very first garment. These instructions laid the foundation for the Vikisews brand, its vision and its mission. I wanted to create modern patterns with the utmost detailed and clear instructions.

Now, with each new collection we are constantly improving our instructions, amending them and adding more relevant details. By the time the final product reaches you, our drafters, correctors, and editors would have spent weeks perfecting every word and every photograph. If you compile a few of our instructions together, you will get a sewing manual that will assist you in sewing all kinds of garments at any difficulty level.

And I would be very happy if these instructions helped you to turn your hobby into a lifelong passion... Enjoy the process! Create your ultimate dream wardrobe! Wear your garments proudly for years to come!

If you have any questions, please contact us at [info@vikisews.com](mailto:info@vikisews.com) — we are always there to help.



## AMAL PATTERN DESCRIPTION

---

Amal is a loose-fitting robe with a straight cut. The center front edges are finished with plackets. The shoulder line is extended. The set-in sleeves are long, loose-fitting and finished with facings at the bottom. The hemline of the sleeve is asymmetrical. The detachable tie belt is secured with belt loops at the side seams. Amal is ankle-length.



## IMPORTANT!

---

The contents of this pattern are copyright protected and belong exclusively to Vikisews. You may use Vikisews patterns for personal use. It is prohibited to share Vikisews patterns and instructions with third parties, as well as to publish patterns and instructions online for public access. **Non-compliance with the mentioned rules is a violation of the US copyright law and may result in civil liability and criminal prosecution.**

You may use Vikisews patterns for commercial use, to sew custom-made garments and/or create fashion collections, on the condition that the patterns are solely used in a manufacturing setting and are not further shared with individuals.

# TOTAL EASE ALLOWANCE

---

	Bust ease	Waistline ease	Hipline ease	Upper arm ease
cm	26.7–26.9	49.3–50.5	29.7–30.7	19.1–19.8
inches	10 1/2–10 5/8	19 3/8–19 7/8	11 3/4–12 1/8	7 1/2–7 3/4

# GARMENT LENGTH, SLEEVE LENGTH

---

Height, cm	Center back length (long robe), cm	Center back length (short robe), cm	Sleeve length including shoulder width, cm
1 (154–160)	132.2–135.4	75.2–78.4	75.4–80.5
2 (162–168)	136.2–139.4	79.2–82.4	79.3–84.4
3 (170–176)	140.2–143.4	83.2–86.4	83.2–88.3
4 (178–184)	144.2–147.4	87.2–90.4	87.1–92.2

Height, ft	Center back length (long robe), in	Center back length (short robe), in	Sleeve length including shoulder width, in
1 (5'1"–5'3")	52–53 1/4	29 5/8–30 7/8	29 5/8–31 3/4
2 (5'4"–5'6")	53 5/8–54 7/8	31 1/8–32 1/2	31 1/4–33 1/4
3 (5'7"–5'9")	55 1/4–56 1/2	32 3/4–34	32 3/4–34 3/4
4 (5'10"–6'1")	56 3/4–58	34 3/8–35 5/8	34 1/4–36 1/4

# SUGGESTED FABRIC

---

To sew this robe, choose medium-weight, fluid, non-stretch or low-stretch fabrics made of natural fibers, artificial fibers, blends, or synthetics.

The following fabrics are recommended: satin, natural or artificial silk, chiffon.

**Attention!** We do not recommend stretchy knit fabrics.

The robe in the photo is made of artificial silk. The fabric is medium weight, fluid, soft and low-stretch. The fiber content is 100% polyester. The fabric weight is 190 g/m<sup>2</sup>.

# SEAM ALLOWANCES

---

All pattern pieces include seam allowances as follows:

- garment hem allowance — 2 cm (3/4")
- all other edges — 1 cm (3/8")

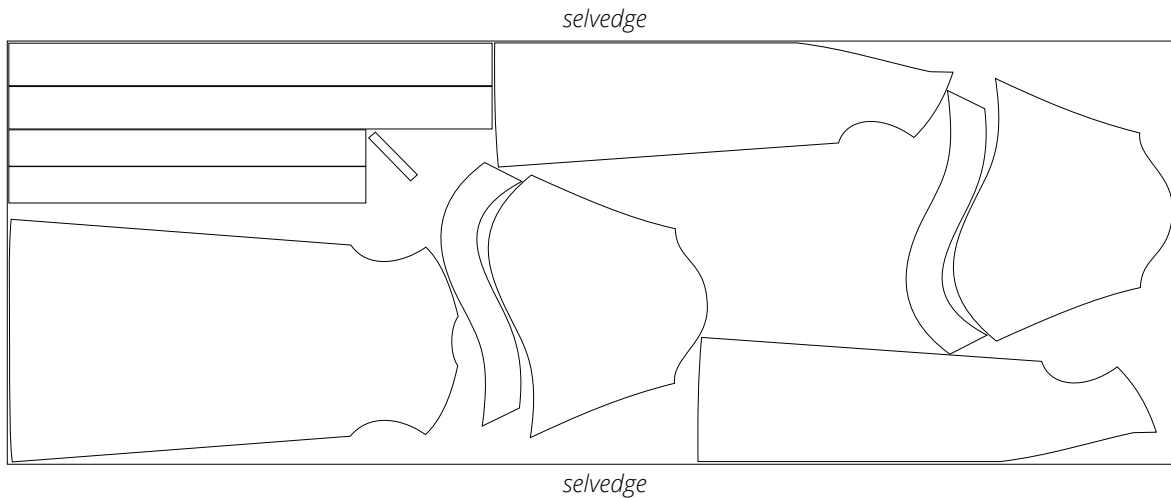
Take this into account when laying out pattern pieces on the fabric.

# CUTTING LAYOUT

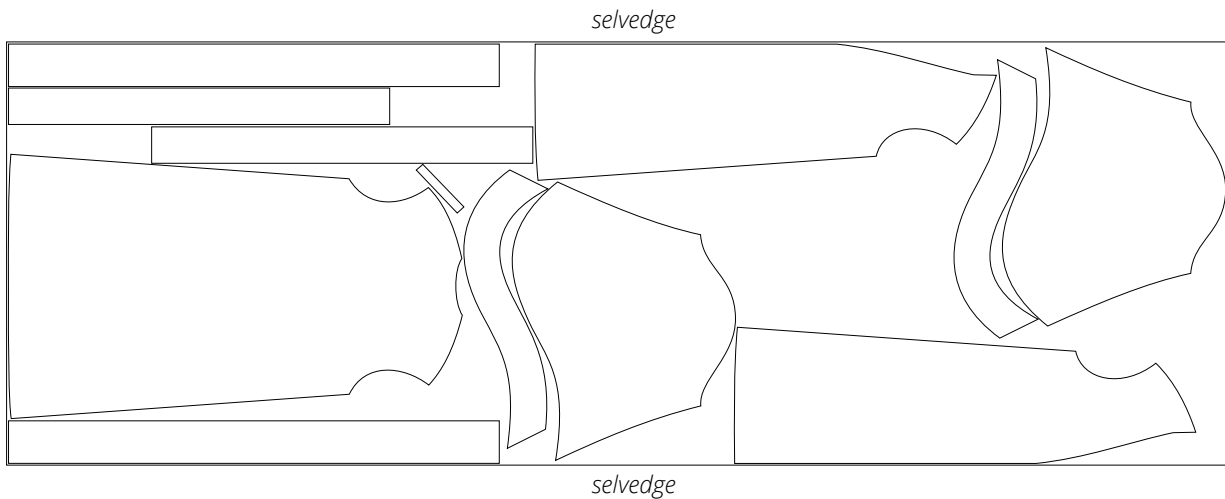
---

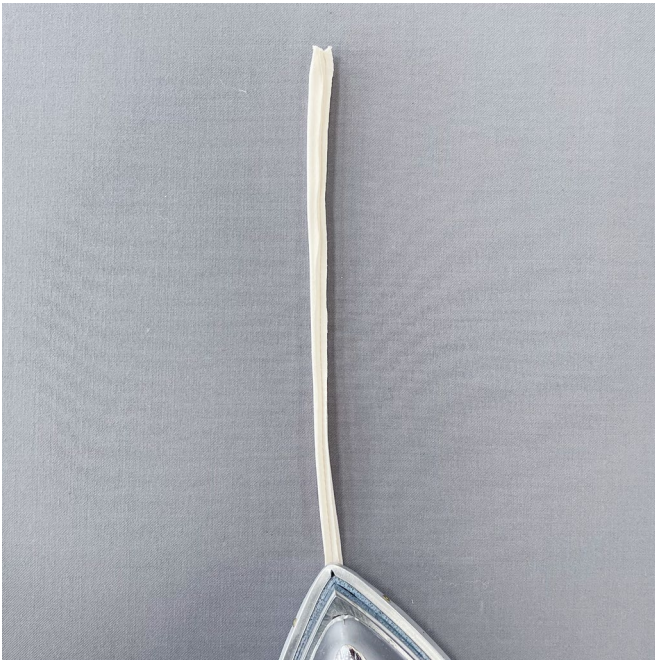
## Long robe

Main fabric, 140 cm (55") wide, with a directional print/nap, cut on a single layer, for sizes XS-M in all heights



Main fabric, 140 cm (55") wide, with a directional print/nap, cut on a single layer, for sizes L-XL in all heights





Press the seam allowances open.



Using either a loop turner or a blunt-end needle, turn the belt loop through to the right side.



Press the belt loop while positioning the seam on the very edge.