

FROM THE FOUNDER OF THE #VIKISEWS BRAND



Back in 2016, when I was working on my first set of sewing instructions, I was trying to write them in such a way that even a complete beginner could easily understand and use them to create their very first garment. These instructions laid the foundation for the Vikisews brand, its vision and its mission. I wanted to create modern patterns with the utmost detailed and clear instructions.

Now, with each new collection we are constantly improving our instructions, amending them and adding more relevant details. By the time the final product reaches you, our drafters, correctors, and editors would have spent weeks perfecting every word and every photograph. If you compile a few of our instructions together, you will get a sewing manual that will assist you in sewing all kinds of garments at any difficulty level.

And I would be very happy if these instructions helped you to turn your hobby into a lifelong passion... Enjoy the process! Create your ultimate dream wardrobe! Wear your garments proudly for years to come!

If you have any questions, please contact us at info@vikisews.com — we are always there to help.



HILMA PATTERN DESCRIPTION

Hilma is a semi-fitted robe with a straight cut. The robe features a shawl collar and patch pockets at the front. The front edge is finished with a facing. Hilma has an extended shoulder line and long, semi-fitted set-in sleeves. The detachable tie belt is secured with belt loops at the side seams. The robe is above-ankle length.



IMPORTANT!

The contents of this pattern are copyright protected and belong exclusively to Vikisews. You may use Vikisews patterns for personal use. It is prohibited to share Vikisews patterns and instructions with third parties, as well as to publish patterns and instructions online for public access. **Non-compliance with the mentioned rules is a violation of the US copyright law and may result in civil liability and criminal prosecution.**

You may use Vikisews patterns for commercial use, to sew custom-made garments and/or create fashion collections, on the condition that the patterns are solely used in a manufacturing setting and are not further shared with individuals.

TOTAL EASE ALLOWANCE

	Bust ease	Waistline ease	Hipline ease	Upper arm ease
cm	16.9–18.2	39.9–42.4	17.2–21.1	9.3–11
inches	6 5/8–7 1/8	15 3/4–16 3/4	6 3/4–8 1/4	3 5/8–4 3/8

GARMENT LENGTH, SLEEVE LENGTH

Height, cm	Center back length, cm	Sleeve length including shoulder width, cm
1 (154–160)	117.5–122	69.9–72.2
2 (162–168)	121.5–126	72.4–74.7
3 (170–176)	125.5–130	74.6–76.9
4 (178–184)	129.5–134	76.9–79.1

Height, ft	Center back length, in	Sleeve length including shoulder width, in
1 (5'1"–5'3")	46 1/4–48	27 1/2–28 3/8
2 (5'4"–5'6")	47 7/8–49 5/8	28 1/2–29 3/8
3 (5'7"–5'9")	49 3/8–51 1/8	29 3/8–30 1/4
4 (5'10"–6'1")	51–52 3/4	30 1/4–31 1/8

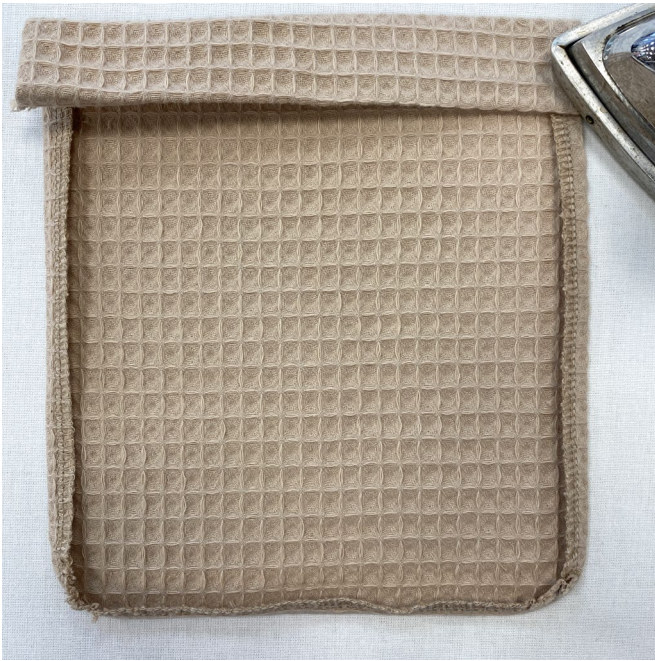
SUGGESTED FABRIC

To sew this robe, choose fabrics with the following properties:

- medium weight, structured, opaque, non-stretch or with very little stretch
- the fiber content can include natural fibers (wool, cotton), artificial fibers (viscose), blends (wool + silk, wool + polyester, cotton + viscose, etc.), and synthetics (polyester, polyester + elastane)
- the following fabrics are recommended: cotton, sateen, waffle, terry, flannel.

Attention! We do not recommend stretchy fabrics (knits) or loosely-woven lightweight fabrics.

The robe in the photo is made of waffle fabric. The fabric is structured and non-stretch. The fiber content is 100% cotton. The fabric weight is 240 g/m².



Fold the hem allowance to the wrong side again, following the foldline. Press in place.



Fold the pressed hem allowance along the foldline to the right side, align the side edges, and pin.



Stitch on the sewing machine, backstitching at the beginning and end of the seam.