

FROM THE FOUNDER OF THE #VIKISEWS BRAND



Back in 2016, when I was working on my first set of sewing instructions, I was trying to write them in such a way that even a complete beginner could easily understand and use them to create their very first garment. These instructions laid the foundation for the Vikisews brand, its vision and its mission. I wanted to create modern patterns with the utmost detailed and clear instructions.

Now, with each new collection we are constantly improving our instructions, amending them and adding more relevant details. By the time the final product reaches you, our drafters, correctors, and editors would have spent weeks perfecting every word and every photograph. If you compile a few of our instructions together, you will get a sewing manual that will assist you in sewing all kinds of garments at any difficulty level.

And I would be very happy if these instructions helped you to turn your hobby into a lifelong passion... Enjoy the process! Create your ultimate dream wardrobe! Wear your garments proudly for years to come!

If you have any questions, please contact us at info@vikisews.com — we are always there to help.



MACKENZIE PATTERN DESCRIPTION

Mackenzie is a pair of loose-fitting, straight-cut pants, sitting 3 cm (1 1/8") below the natural waistline. There are front gusset pockets, featuring a double welt and a zipper closure. The back is designed with a yoke and patch pockets. The applied three-piece waistband features topstitched belt loops and fastens with a stud button and buttonhole. The pants have a fly front zipper closure. The seams are topstitched. Mackenzie is below-ankle length.



IMPORTANT!

The contents of this pattern are copyright protected and belong exclusively to Vikisews. You may use Vikisews patterns for personal use. It is prohibited to share Vikisews patterns and instructions with third parties, as well as to publish patterns and instructions online for public access. **Non-compliance with the mentioned rules is a violation of the US copyright law and may result in civil liability and criminal prosecution.**

You may use Vikisews patterns for commercial use, to sew custom-made garments and/or create fashion collections, on the condition that the patterns are solely used in a manufacturing setting and are not further shared with individuals.

TOTAL EASE ALLOWANCE

	Waistline ease	Hipline ease
cm	5.3–7	3.5–4.6
inches	2 1/8–2 3/4	1 3/8–1 3/4

GARMENT LENGTH

Height, cm	Side seam length including waistband, cm	Height, ft	Side seam length including waistband, in
1 (154–160)	108.4–110	1 (5'1"–5'3")	42 5/8–43 1/4
2 (162–168)	112.4–113.9	2 (5'4"–5'6")	44 1/4–44 7/8
3 (170–176)	116.4–117.9	3 (5'7"–5'9")	45 7/8–46 3/8
4 (178–184)	120.4–121.9	4 (5'10"–6'1")	47 3/8–48

FINISHED HEM WIDTH FOR ALL HEIGHTS

Size	34	36	38	40	42	44	46	48	50	52
cm	30.6	31	31.4	31.7	32	32.4	32.8	33.1	33.5	33.8
inches	12	12 1/4	12 3/8	12 1/2	12 5/8	12 3/4	12 7/8	13	13 1/4	13 1/4

SUGGESTED FABRIC

To sew these pants, choose medium- to heavyweight, low-stretch fabrics made of natural fibers, artificial fibers, blends, or synthetics.

The following fabrics are recommended: denim, corduroy.

The garment in the photo is made of denim. The fabric is medium weight and has very little stretch. The fiber content is 100% cotton. The fabric weight is 300 g/m².

Important! If you choose the fabric that gets a stone-washed effect after washing, make sure to do it once before sewing.

In this case, refer to the fabric requirements given for one size and height bigger than your actual ones as the fabric will shrink.

FABRIC AND NOTIONS REQUIREMENTS

1. Main fabric, 140 cm wide, with a directional print/nap, in meters:

Height, cm	Size						
	34	36-38	40	42	44-46	48-50	52
1 (154-160)	1.55	1.65	1.95	2	2.05	2.1	2.15
2 (162-168)	1.6	1.7	2.05	2.05	2.1	2.15	2.25
3 (170-176)	1.65	1.75	2.1	2.15	2.15	2.2	2.3
4 (178-184)	1.7	1.8	2.2	2.2	2.2	2.25	2.35

Main fabric, 150 cm wide, with a directional print/nap, in meters:

Height, cm	Size				
	34-36	38-40	42	44-46	48-52
1 (154-160)	1.5	1.6	1.85	1.9	1.95
2 (162-168)	1.55	1.65	1.9	1.9	2.05
3 (170-176)	1.6	1.7	1.9	1.95	2.15
4 (178-184)	1.6	1.75	1.95	2	2.2

Main fabric, 55" wide, with a directional print/nap, in yards:

Height, ft	Size						
	34	36-38	40	42	44-46	48-50	52
1 (5'1"-5'3")	1 3/4	1 3/4	2 1/8	2 1/8	2 1/4	2 1/4	2 3/8
2 (5'4"-5'6")	1 3/4	1 7/8	2 1/4	2 1/4	2 1/4	2 3/8	2 1/2
3 (5'7"-5'9")	1 3/4	1 7/8	2 1/4	2 3/8	2 3/8	2 3/8	2 1/2
4 (5'10"-6'1")	1 7/8	2	2 3/8	2 3/8	2 3/8	2 1/2	2 5/8

Main fabric, 59" wide, with a directional print/nap, in yards:

Height, ft	Size				
	34-36	38-40	42	44-46	48-52
1 (5'1"-5'3")	1 5/8	1 3/4	2	2 1/8	2 1/8
2 (5'4"-5'6")	1 3/4	1 3/4	2 1/8	2 1/8	2 1/4
3 (5'7"-5'9")	1 3/4	1 7/8	2 1/8	2 1/8	2 3/8
4 (5'10"-6'1")	1 3/4	1 7/8	2 1/8	2 1/8	2 3/8

IMPORTANT! When purchasing fabric, please account for shrinkage and buy 5% more than required.

2. Lightweight interfacing, knit or woven, 140 cm (55") wide, for all sizes in all heights — 0.2 m (1/4 yd)
3. Stitched bias-cut fusible stay tape with stitch reinforcement, 1.5 cm (5/8") wide, for all heights:

Size	34	36–38	40–44	46–48	50–52
meters	0.7	0.8	0.9	1	1.1
yards	3/4	7/8	1	1 1/8	1 1/4

4. One metal pant zipper, 15 cm (5 7/8") long, for all sizes in all heights
5. Two metal pant zippers, 25 cm (9 7/8") long, for all sizes in all heights
6. One metal stud button for jeans, 2–2.5 cm (3/4–1") in diameter
7. Matching thread — 5 spools (1 spool for the sewing machine + 4 spools for the overlocker)
8. Matching (or contrasting) topstitching thread (for example, Madeira No. 35) — 2 spools

TOOLS AND EQUIPMENT

- sewing machine for construction
- overlocker for finishing raw edges. This may be replaced with a stretch overlock stitch or a zigzag stitch on the sewing machine (overlock or zigzag stitch width 2–3 mm, stitch length 2.5 mm)
- buttonhole foot for the sewing machine
- one-sided foot for the sewing machine
- stitch-in-the-ditch foot for the sewing machine (optional)
- stud button press tool with a corresponding set of molds, hole puncher

PATTERN PIECES LIST

1. From main fabric:

- front leg — cut 2
- back leg — cut 2
- back yoke — cut 2
- bottom gusset pocket — cut 2
- top gusset pocket — cut 2
- side pocket gusset — cut 2
- bottom pocket gusset — cut 2
- gusset pocket top welt — cut 2
- gusset pocket bottom welt — cut 2
- patch pocket — cut 2
- back waistband — cut 2 on fold
- right front waistband — cut 2
- left front waistband — cut 2
- fly shield — cut 1
- belt loops — cut 1 (5 pieces)

2. From interfacing:

- back waistband — cut 2 on fold
- right front waistband — cut 2
- left front waistband — cut 2

Additionally, cut the following from interfacing:

- two strips, 3 cm (1 1/8") wide (length according to the pattern), to interface the top seam allowances of the patch pocket pieces
- one strip, 4 cm (1 5/8") wide (length according to the pattern), to interface the fly extension on the right front leg piece

The interfacing strips should be cut on the straight grain (parallel to the selvedge).

SEAM ALLOWANCES

All pattern pieces include seam allowances as follows:

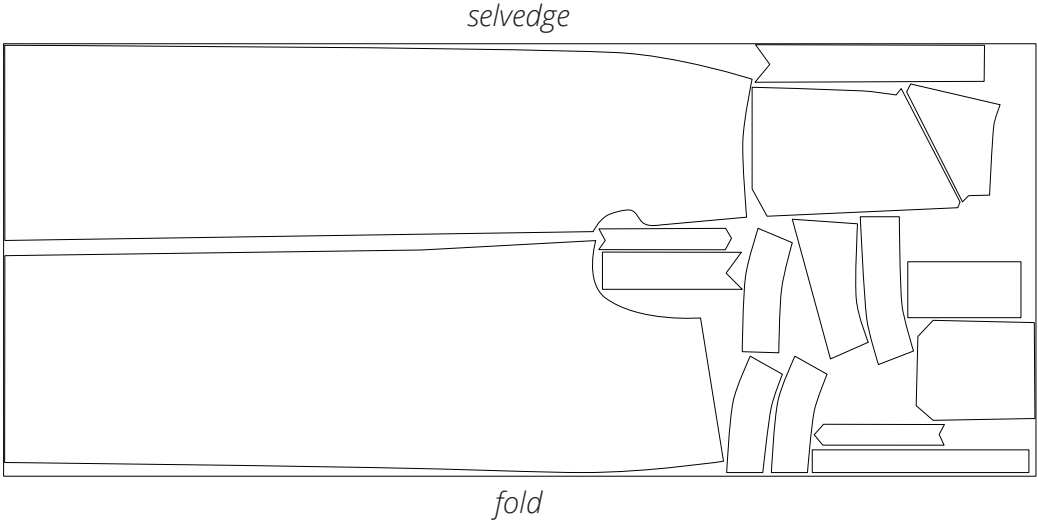
- garment hem allowance — 4 cm (1 5/8")
- all other edges — 1 cm (3/8")

Take this into account when laying out pattern pieces on the fabric.

***IMPORTANT!** Don't forget to transfer all pattern markings and notches onto the fabric.*

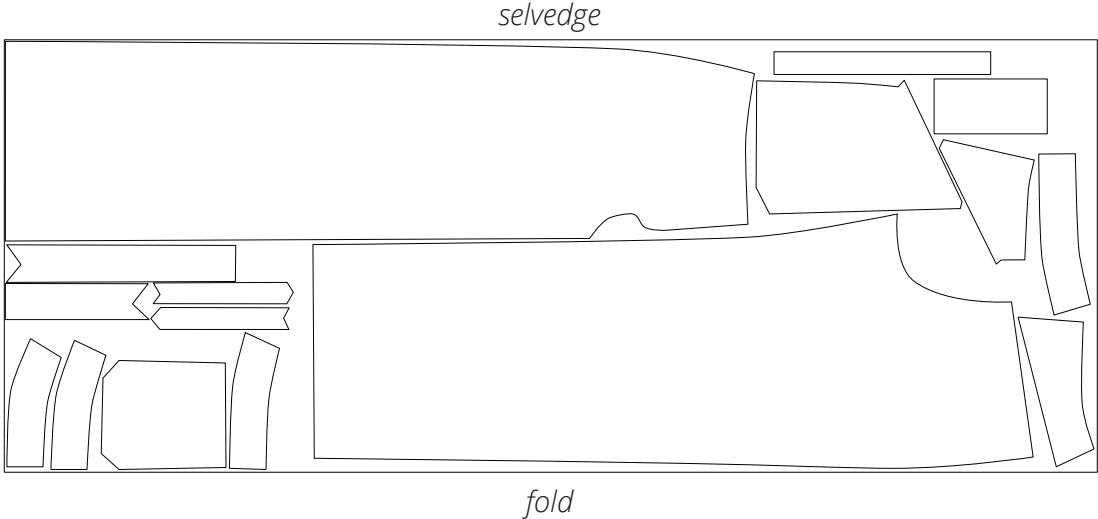
CUTTING LAYOUT

Main fabric, 140 cm (55") wide, with a directional print/nap, cut on fold, for size 34 in all heights



Attention! Cut one each of the fly shield and belt loop pieces.

Main fabric, 140 cm (55") wide, with a directional print/nap, cut on fold, for sizes 36-38 in all heights



Attention! Cut one each of the fly shield and belt loop pieces.



Using topstitching thread, sew two rows of topstitching along the side and bottom edges of the patch pocket to secure it to the back leg piece. Stitch first at 1 mm and then at 6 mm (1/4") from the pocket edge. Do not backstitch, but instead leave long thread tails at the beginning and end of each stitching line.

Pull the thread tails to the wrong side, tie them into knots, and hide between the fabric layers using a needle.



Press the finished patch pocket.



Shape the back leg pieces by steam-pressing them.

To do this, place the two back leg pieces wrong sides together, aligning the crotch and center edges.

Stretch the crotch edge between the center edge corner and the inseam edge while pressing.