

FROM THE FOUNDER OF THE #VIKISEWS BRAND



Back in 2016, when I was working on my first set of sewing instructions, I was trying to write them in such a way that even a complete beginner could easily understand and use them to create their very first garment. These instructions laid the foundation for the Vikisews brand, its vision and its mission. I wanted to create modern patterns with the utmost detailed and clear instructions.

Now, with each new collection we are constantly improving our instructions, amending them and adding more relevant details. By the time the final product reaches you, our drafters, correctors, and editors would have spent weeks perfecting every word and every photograph. If you compile a few of our instructions together, you will get a sewing manual that will assist you in sewing all kinds of garments at any difficulty level.

And I would be very happy if these instructions helped you to turn your hobby into a lifelong passion... Enjoy the process! Create your ultimate dream wardrobe! Wear your garments proudly for years to come!

If you have any questions, please contact us at info@vikisews.com — we are always there to help.



DEVA PATTERN DESCRIPTION

Deva is a fitted slip with an accentuated waist and underwire bust support. It features shortened plunge underwires (Type 18). The two-piece bust cups have horizontal seams and are trimmed with scalloped lace along the top edge. The bottom part of the cups is lined with the main fabric. The edges of the top bra part of the garment are finished with picot-edge elastic. The slip has adjustable straps made of strap elastic and closes with hooks and eyes at the back. Deva is above-knee length.



IMPORTANT!

The contents of this pattern are copyright protected and belong exclusively to Vikisews. You may use Vikisews patterns for personal use. It is prohibited to share Vikisews patterns and instructions with third parties, as well as to publish patterns and instructions online for public access. **Non-compliance with the mentioned rules is a violation of the US copyright law and may result in civil liability and criminal prosecution.**

You may use Vikisews patterns for commercial use, to sew custom-made garments and/or create fashion collections, on the condition that the patterns are solely used in a manufacturing setting and are not further shared with individuals.

TOTAL EASE ALLOWANCE

| | Waistline ease | Hipline ease |
|--------|----------------|--------------|
| cm | 1.4–1.6 | 2.5 |
| inches | 1/2–5/8 | 1 |

GARMENT LENGTH

| Height, cm | Center back length from waist down, cm | Height, ft | Center back length from waist down, in |
|-------------|---|----------------|---|
| 1 (154–160) | 42 | 1 (5'1"–5'3") | 16 1/2 |
| 2 (162–168) | 45 | 2 (5'4"–5'6") | 17 3/4 |
| 3 (170–176) | 48 | 3 (5'7"–5'9") | 18 7/8 |
| 4 (178–184) | 51 | 4 (5'10"–6'1") | 20 1/8 |

SUGGESTED FABRIC

To sew this slip, choose dress-weight fabrics with the following properties: medium-weight, soft, non-stretch or low-stretch, made of natural, artificial, synthetic fibers, or blends.

Recommended fabrics: natural silk, artificial silk, satin, opaque chiffon, scalloped lace (guipure lace, lace trim, embroidered mesh).

For the cradle lining, we recommend corset mesh.

The slip in the photos is made of natural silk. The fabric is medium weight, pliable, soft, with a little stretch. The fiber content is 96% silk and 4% elastane. The fabric weight is 90 g/m².

The top part of the bust cups is made of lace (75 g/m²). The fiber content is 95% nylon + 5% spandex.

The cradle lining is made of non-stretch corset mesh. The fiber content is 100% polyamide, the fabric weight is 45 g/m².

FABRIC AND NOTIONS REQUIREMENTS

1. Main fabric, 140 cm wide, with a directional print/nap, in meters:

| EU band size | Cup size | | | |
|--------------|----------|------|------|------|
| | A | B | C | D |
| 65 | 0.75 | 0.75 | 0.75 | 0.75 |
| 70 | 0.75 | 0.75 | 0.75 | 0.75 |
| 75 | 0.75 | 0.75 | 0.75 | 0.75 |
| 80 | 0.75 | 0.8 | 0.8 | 0.8 |
| 85 | | 0.8 | 0.85 | 0.85 |
| 90 | | 1 | 1 | 1 |
| 95 | | 1.05 | 1.05 | 1.05 |
| 100 | | 1.1 | 1.15 | 1.2 |

Main fabric, 55" wide, with a directional print/nap, in yards:

| UK/US band size | Cup size | | | |
|-----------------|----------|-------|-------|-------|
| | A | B | C | D |
| 30 | 7/8 | 7/8 | 7/8 | 7/8 |
| 32 | 7/8 | 7/8 | 7/8 | 7/8 |
| 34 | 7/8 | 7/8 | 7/8 | 7/8 |
| 36 | 7/8 | 7/8 | 7/8 | 7/8 |
| 38 | | 7/8 | 7/8 | 7/8 |
| 40 | | 1 1/8 | 1 1/8 | 1 1/8 |
| 42 | | 1 1/8 | 1 1/8 | 1 1/8 |
| 44 | | 1 1/4 | 1 1/4 | 1 1/4 |

2. Main fabric (lace), 22 cm wide, in meters (not accounting for pattern repeat):

| EU band size | Cup size | | | |
|--------------|----------|------|------|------|
| | A | B | C | D |
| 65 | 0.15 | 0.2 | 0.2 | 0.2 |
| 70 | 0.2 | 0.2 | 0.2 | 0.25 |
| 75 | 0.2 | 0.2 | 0.25 | 0.25 |
| 80 | 0.2 | 0.25 | 0.25 | 0.25 |
| 85 | | 0.25 | 0.25 | 0.25 |
| 90 | | 0.25 | 0.25 | 0.3 |
| 95 | | 0.25 | 0.3 | 0.35 |
| 100 | | 0.3 | 0.35 | 0.4 |

Main fabric (lace), 9" wide, in yards (not accounting for pattern repeat):

| UK/US band size | Cup size | | | |
|-----------------|----------|-----|-----|-----|
| | A | B | C | D |
| 30 | 1/8 | 1/4 | 1/4 | 1/4 |
| 32 | 1/4 | 1/4 | 1/4 | 1/4 |
| 34 | 1/4 | 1/4 | 1/4 | 1/4 |
| 36 | 1/4 | 1/4 | 1/4 | 1/4 |
| 38 | | 1/4 | 1/4 | 1/4 |
| 40 | | 1/4 | 1/4 | 3/8 |
| 42 | | 1/4 | 3/8 | 3/8 |
| 44 | | 3/8 | 3/8 | 3/8 |

3. Corset mesh, 150 cm (59") wide, cut in one direction, for all sizes – 0.15 m (1/8 yd).

4. Interfacing, 140 cm (55") wide, 40 g/m², for all sizes – 0.3 m (3/8 yd).

5. Stitched bias-cut fusible stay tape with stitch reinforcement, 1.5 cm wide, in centimeters:

| EU band size | Cup size | | | |
|--------------|----------|----|----|----|
| | A | B | C | D |
| 65 | 60 | 60 | 60 | 60 |
| 70 | 60 | 60 | 60 | 60 |
| 75 | 60 | 60 | 60 | 60 |
| 80 | 60 | 60 | 60 | 60 |
| 85 | | 65 | 65 | 65 |
| 90 | | 65 | 65 | 65 |
| 95 | | 70 | 70 | 70 |
| 100 | | 70 | 70 | 75 |

Stitched bias-cut fusible stay tape with stitch reinforcement, 5/8" wide, in inches:

| UK/US band size | Cup size | | | |
|-----------------|----------|--------|--------|--------|
| | A | B | C | D |
| 30 | 23 5/8 | 23 5/8 | 23 5/8 | 23 5/8 |
| 32 | 23 5/8 | 23 5/8 | 23 5/8 | 23 5/8 |
| 34 | 23 5/8 | 23 5/8 | 23 5/8 | 23 5/8 |
| 36 | 23 5/8 | 23 5/8 | 23 5/8 | 23 5/8 |
| 38 | | 25 5/8 | 25 5/8 | 25 5/8 |
| 40 | | 25 5/8 | 25 5/8 | 25 5/8 |
| 42 | | 27 1/2 | 27 1/2 | 27 1/2 |
| 44 | | 27 1/2 | 27 1/2 | 29 1/2 |

6. Picot-edge band elastic, 1 cm wide, in centimeters*:

| EU band size | Cup size | | | |
|--------------|----------|-----|-----|-----|
| | A | B | C | D |
| 65 | 77 | 78 | 79 | 79 |
| 70 | 84 | 85 | 85 | 85 |
| 75 | 90 | 91 | 91 | 91 |
| 80 | 96 | 97 | 97 | 98 |
| 85 | | 103 | 104 | 105 |
| 90 | | 110 | 111 | 112 |
| 95 | | 117 | 118 | 118 |
| 100 | | 124 | 124 | 124 |

Picot-edge band elastic, 3/8" wide, in inches*:

| UK/US band size | Cup size | | | |
|-----------------|----------|--------|--------|--------|
| | A | B | C | D |
| 30 | 30 3/8 | 30 3/4 | 31 1/8 | 31 1/8 |
| 32 | 33 1/8 | 33 1/2 | 33 1/2 | 33 1/2 |
| 34 | 35 3/8 | 35 7/8 | 35 7/8 | 35 7/8 |
| 36 | 37 3/4 | 38 1/4 | 38 1/4 | 38 5/8 |
| 38 | | 40 1/2 | 41 | 41 3/8 |
| 40 | | 43 1/4 | 43 3/4 | 44 1/8 |
| 42 | | 46 1/8 | 46 1/2 | 46 1/2 |
| 44 | | 48 7/8 | 48 7/8 | 48 7/8 |

*The exact elastic length is indicated on the pattern.

7. Underwire channeling tape, 1 cm wide, in centimeters*:

| EU band size | Cup size | | | |
|--------------|----------|----|----|----|
| | A | B | C | D |
| 65 | 50 | 53 | 56 | 59 |
| 70 | 53 | 56 | 59 | 62 |
| 75 | 56 | 59 | 62 | 66 |
| 80 | 59 | 62 | 66 | 68 |
| 85 | | 66 | 68 | 70 |
| 90 | | 68 | 70 | 72 |
| 95 | | 70 | 72 | 75 |
| 100 | | 72 | 75 | 79 |

Underwire channeling tape, 3/8" wide, in inches*:

| UK/US band size | Cup size | | | |
|-----------------|----------|--------|--------|--------|
| | A | B | C | D |
| 30 | 19 5/8 | 20 7/8 | 22 | 23 1/4 |
| 32 | 20 7/8 | 22 | 23 1/4 | 24 3/8 |
| 34 | 22 | 23 1/4 | 24 3/8 | 26 |
| 36 | 23 1/4 | 24 3/8 | 26 | 26 3/4 |
| 38 | | 26 | 26 3/4 | 27 1/2 |
| 40 | | 26 3/4 | 27 1/2 | 28 3/8 |
| 42 | | 27 1/2 | 28 3/8 | 29 1/2 |
| 44 | | 28 3/8 | 29 1/2 | 31 1/8 |

*The exact length is indicated on the pattern.

IMPORTANT! When purchasing fabric and elastic, please account for shrinkage and buy 5% more than required.

8. Synthetic whaleboning, 4 mm wide, in centimeters*:

| EU band size | Cup size | | | |
|--------------|----------|----|----|----|
| | A | B | C | D |
| 65 | 10 | 11 | 11 | 12 |
| 70 | 11 | 11 | 12 | 12 |
| 75 | 11 | 12 | 12 | 13 |
| 80 | 12 | 12 | 13 | 13 |
| 85 | | 13 | 13 | 13 |
| 90 | | 13 | 13 | 13 |
| 95 | | 13 | 13 | 13 |
| 100 | | 13 | 13 | 14 |

Synthetic whaleboning, 1/8" wide, in inches*:

| UK/US band size | Cup size | | | |
|-----------------|----------|-------|-------|-------|
| | A | B | C | D |
| 30 | 3 7/8 | 4 3/8 | 4 3/8 | 4 3/4 |
| 32 | 4 3/8 | 4 3/8 | 4 3/4 | 4 3/4 |
| 34 | 4 3/8 | 4 3/4 | 4 3/4 | 5 1/8 |
| 36 | 4 3/4 | 4 3/4 | 5 1/8 | 5 1/8 |
| 38 | | 5 1/8 | 5 1/8 | 5 1/8 |
| 40 | | 5 1/8 | 5 1/8 | 5 1/8 |
| 42 | | 5 1/8 | 5 1/8 | 5 1/8 |
| 44 | | 5 1/8 | 5 1/8 | 5 1/2 |

*The exact length is indicated on the pattern.

9. Two strap slide adjusters, 1 cm (3/8") wide.
10. Two strap rings, 1 cm (3/8") in diameter.
11. Strap elastic, 1 cm (3/8") wide – 1.1 m (1 1/4 yd).
12. One pair of bra underwires (in the size indicated on the pattern).
13. One bra hook-and-eye closure, 2.8 cm (1 1/8") wide.
14. Matching thread – 4 spools (1 spool for the sewing machine + 3 spools for the overlocker).

TOOLS AND EQUIPMENT

- sewing machine for construction
- overlocker for construction and finishing raw edges It can be replaced with a stretch overlock stitch or a zigzag stitch on the sewing machine (overlock or zigzag stitch width 2–3 mm, stitch length 2.5 mm).
- one-sided foot for the sewing machine
- tailor's corset ham or bust ham.

***IMPORTANT!** We recommend using specialty needles when working with elastic (for example, STRETCH, SUPER STRETCH, JERSEY, etc.). These are ballpoint needles, so they part the threads of the fabric you are stitching rather than piercing them.*

PATTERN PIECES LIST

1. From main fabric:

- front – cut 1
- back – cut 2
- back facing – cut 2
- back band – cut 2
- bottom cup – cut 4.

2. From main fabric (lace):

- top cup – cut 2.

3. From corset mesh:

- cradle lining – cut 1.

4. From interfacing:

- back facing – cut 2.

***IMPORTANT!** Don't forget to transfer all pattern markings and notches onto the fabric.*

SEAM ALLOWANCES

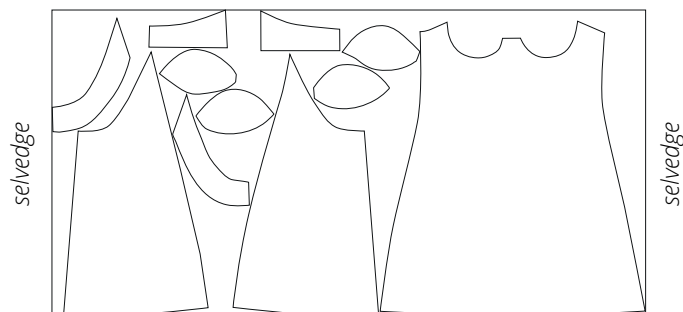
All pattern pieces include seam allowances as follows:

- back closure seam allowance – 0.5 cm (just under 1/4")
- all other edges – 1 cm (3/8").

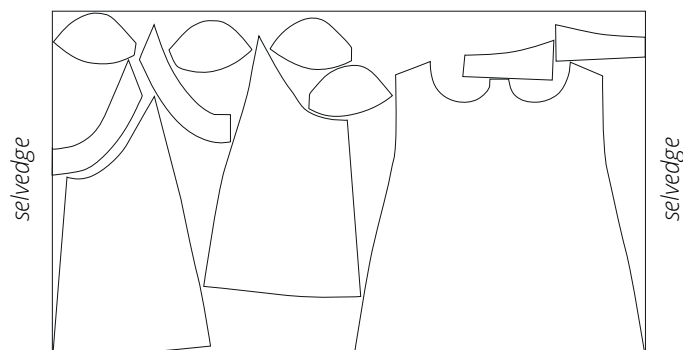
Take this into account when laying out pattern pieces on the fabric.

CUTTING LAYOUT

Main fabric, 140 cm (55") wide, with a directional print/nap, cut on a single layer, for sizes 65A–75A, 65B–75B, 65C–75C, 65D–75D



Main fabric, 140 cm (55") wide, with a directional print/nap, cut on a single layer, for sizes 80A, 80B–85B, 80C–85C, 80D–85D





Press the seam flat. Press the seam allowances toward the facing.



Working from the right side, understitch the seam allowances to the facing at 2 mm from the seam. Backstitch at the beginning and end. Trim the seam allowances down to 3 mm (1/8").



Turn the facing right side out. Press the top edge, rolling the seam toward the facing by 1 mm.