

FROM THE FOUNDER OF THE #VIKISEWS BRAND

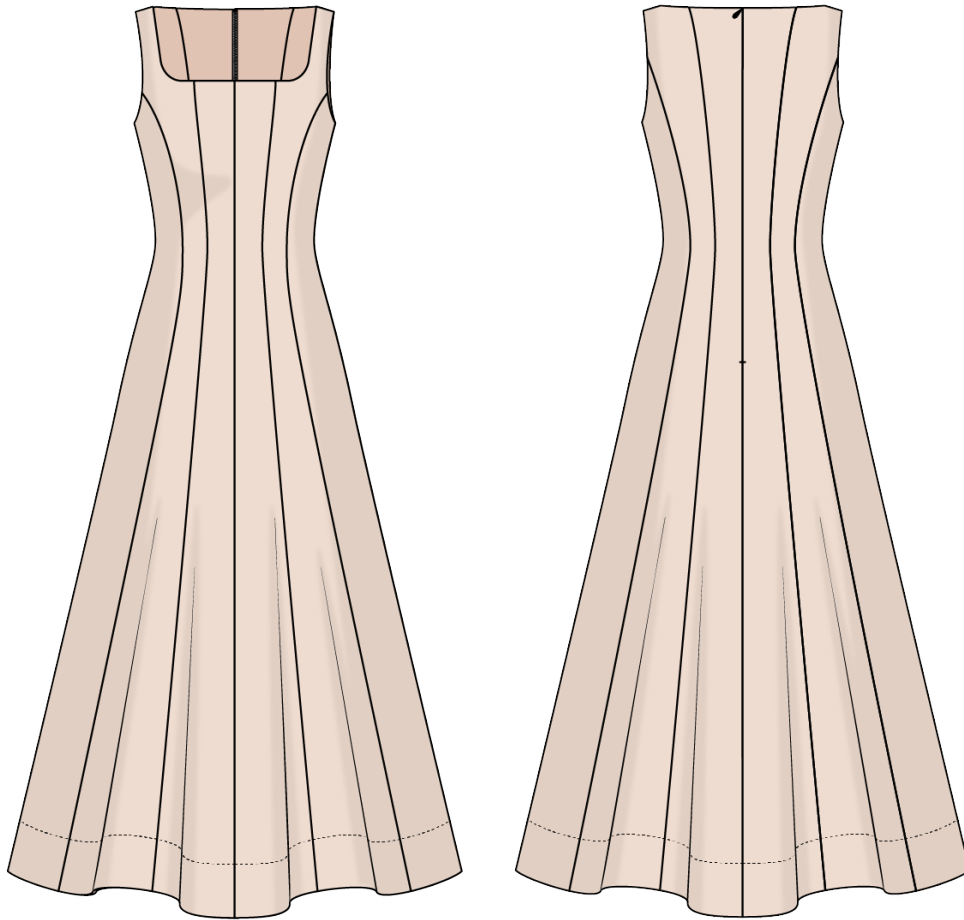


Back in 2016, when I was working on my first set of sewing instructions, I was trying to write them in such a way that even a complete beginner could easily understand and use them to create their very first garment. These instructions laid the foundation for the Vikisews brand, its vision and its mission. I wanted to create modern patterns with the utmost detailed and clear instructions.

Now, with each new collection we are constantly improving our instructions, amending them and adding more relevant details. By the time the final product reaches you, our drafters, correctors, and editors would have spent weeks perfecting every word and every photograph. If you compile a few of our instructions together, you will get a sewing manual that will assist you in sewing all kinds of garments at any difficulty level.

And I would be very happy if these instructions helped you to turn your hobby into a lifelong passion... Enjoy the process! Create your ultimate dream wardrobe! Wear your garments proudly for years to come!

If you have any questions, please contact us at info@vikisews.com — we are always there to help.



MATIA PATTERN DESCRIPTION

Matia is a semi-fitted dress with an accentuated waist and a skirt that flares out towards the bottom. The front and back feature princess and center seams. The dress has a deep square neckline and fastens with an invisible zipper in the center back seam. The hem is finished with a wide facing. Matia has a free-hanging lining and is above-ankle length.



IMPORTANT!

The contents of this pattern are copyright protected and belong exclusively to Vikisews. You may use Vikisews patterns for personal use. It is prohibited to share Vikisews patterns and instructions with third parties, as well as to publish patterns and instructions online for public access. **Non-compliance with the mentioned rules is a violation of the US copyright law and may result in civil liability and criminal prosecution.**

You may use Vikisews patterns for commercial use, to sew custom-made garments and/or create fashion collections, on the condition that the patterns are solely used in a manufacturing setting and are not further shared with individuals.

TOTAL EASE ALLOWANCE

	Bust ease	Waistline ease	Hipline ease
cm	1.4–4.1	4.8–5.9	17.4–19.5
inches	1/2–1 5/8	1 7/8–2 3/8	6 7/8–7 5/8

GARMENT LENGTH

Height, cm	Center back length, cm	Back length from waist down, cm
1 (154–160)	125.2–127.8	89–90
2 (162–168)	128.8–131.4	92–93
3 (170–176)	132.5–135	95–96
4 (178–184)	136.1–138.6	98–99

Height, ft	Center back length, in	Back length from waist down, in
1 (5'1"–5'3")	49 1/4–50 3/8	35–35 3/8
2 (5'4"–5'6")	50 3/4–51 3/4	36 1/4–36 5/8
3 (5'7"–5'9")	52 1/8–53 1/8	37 3/8–37 3/4
4 (5'10"–6'1")	53 5/8–54 5/8	38 5/8–39

SUGGESTED FABRIC

To sew this dress, choose dress-weight fabrics with the following properties:

- medium-weight, structured, non-stretch
- the fiber content can include natural fibers (cotton, linen, nettle), artificial fibers (viscose), and blends (polyester + linen, polyester + viscose, etc.)

Recommended fabrics: nettle, linen, poplin, cotton.

It's important to choose a lining fabric that matches the main fabric's properties. The lining fabric should be structured and non-stretch. Even the slightest difference in the properties of the main and lining fabrics can cause distortion in the final garment. For the lining, you can choose lightweight batiste. The fiber content can be 100% cotton, 100% nettle, cotton + silk, cotton + viscose. The fabric weight should be 55–70 g/m².

Attention! We do not recommend stretchy fabrics. The fabric should be structured.

The dress in the photos is made of linen. The fabric is medium weight, airy, textured, structured, non-stretch, and opaque. The fiber content is 100% linen. The fabric weight is 220 g/m².

The lining is made of lightweight batiste. The fiber content is 70% cotton and 30% silk. The fabric weight is 60 g/m².

FABRIC AND NOTIONS REQUIREMENTS

1. Main fabric, 140 cm wide, with a directional print/nap, 200–250 g/m², in meters:

Height, cm	Size									
	34	36	38	40	42	44	46	48	50	52
1 (154–160)	2.8	2.85	2.85	2.9	2.95	3	3.05	3.1	3.15	3.2
2 (162–168)	2.9	2.9	2.9	2.95	3	3.1	3.1	3.15	3.2	3.3
3 (170–176)	2.95	2.95	3	3.05	3.1	3.15	3.25	3.25	3.3	3.35
4 (178–184)	3.05	3.05	3.05	3.05	3.15	3.2	3.3	3.3	3.35	3.45

Main fabric, 55" wide, with a directional print/nap, 200–250 g/m², in yards:

Height, ft	Size									
	34	36	38	40	42	44	46	48	50	52
1 (5'1"–5'3")	3	3 1/8	3 1/8	3 1/8	3 1/4	3 1/4	3 3/8	3 3/8	3 1/2	3 1/2
2 (5'4"–5'6")	3 1/8	3 1/8	3 1/8	3 1/4	3 1/4	3 3/8	3 3/8	3 1/2	3 1/2	3 5/8
3 (5'7"–5'9")	3 1/4	3 1/4	3 1/4	3 3/8	3 3/8	3 1/2	3 1/2	3 1/2	3 5/8	3 5/8
4 (5'10"–6'1")	3 3/8	3 3/8	3 3/8	3 3/8	3 1/2	3 1/2	3 1/2	3 5/8	3 5/8	3 3/4

2. Lining fabric, 140 cm wide, 55–70 g/m², in meters:

Height, cm	Size								
	34–36	38	40	42	44	46	48	50	52
1 (154–160)	2.4	2.45	2.5	2.55	2.6	2.65	2.7	2.75	2.8
2 (162–168)	2.45	2.5	2.55	2.6	2.65	2.7	2.8	2.8	2.85
3 (170–176)	2.55	2.6	2.65	2.7	2.75	2.8	2.85	2.9	2.95
4 (178–184)	2.6	2.6	2.7	2.75	2.8	2.85	2.9	3	3

Lining fabric, 55" wide, 55–70 g/m², in yards:

Height, ft	Size								
	34–36	38	40	42	44	46	48	50	52
1 (5'1"–5'3")	2 5/8	2 5/8	2 3/4	2 3/4	2 7/8	2 7/8	3	3	3
2 (5'4"–5'6")	2 5/8	2 3/4	2 3/4	2 7/8	2 7/8	3	3	3	3 1/8
3 (5'7"–5'9")	2 3/4	2 7/8	2 7/8	3	3	3	3 1/8	3 1/8	3 1/4
4 (5'10"–6'1")	2 7/8	2 7/8	3	3	3	3 1/8	3 1/8	3 1/4	3 1/4

IMPORTANT! When purchasing fabric, please account for shrinkage and buy 5% more than required.

3. Lightweight knit or woven interfacing, 140 cm (55") wide, 35–40 g/m², for all sizes in all heights — 0.35 m (3/8 yd).

4. Stitched bias-cut fusible stay tape with stitch reinforcement, 1.5 cm (5/8") wide, for all sizes and heights:

Size	34–38	40–44	46–48	50–52
Meters	1.65	1.72	1.77	1.83
Yards	1 3/4	1 7/8	1 7/8	2

5. One invisible zipper, 60 cm (23 5/8") long, for all sizes in all heights.

6. Matching thread — 4 spools (1 spool for the sewing machine + 3 spools for the overlocker).

TOOLS AND EQUIPMENT

- sewing machine for construction
- overlocker for finishing raw edges. This may be replaced with a stretch overlock stitch or a zigzag stitch on the sewing machine (overlock or zigzag stitch width 2–3 mm, stitch length 2.5 mm).
- stitch-in-the-ditch foot for the sewing machine (optional)
- one-sided foot for the sewing machine to attach the zipper

PATTERN PIECES LIST

1. From main fabric:

- center front — cut 2
- mid front — cut 2
- side front — cut 2
- center back — cut 2
- mid back — cut 2
- side back — cut 2
- front hem facing — cut 1 on fold
- back hem facing — cut 1 on fold

2. From lining fabric:

- center front — cut 2
- mid front — cut 2
- side front — cut 2
- center back — cut 2
- mid back — cut 2
- side back — cut 2

3. From interfacing:

- front hem facing — cut 1 on fold
- back hem facing — cut 1 on fold

***IMPORTANT!** Don't forget to transfer all pattern markings and notches onto the fabric.*

Additionally, cut two square pieces of interfacing, 2×2 cm (3/4×3/4"), to reinforce the center back seam allowances at the zipper notch.

SEAM ALLOWANCES

All pattern pieces include seam allowances as follows:

- center seam allowance on the center back — 1.5 cm (5/8")
- all other edges — 1 cm (3/8").

Take this into account when laying out pattern pieces on the fabric.



Place the center front pieces right sides together, align the edges, match the notches, and pin.

Machine-stitch, backstitching at the beginning and end of the seam.



Press the seam flat.



Press the seam allowances open.