

# FROM THE FOUNDER OF THE #VIKISEWS BRAND

---

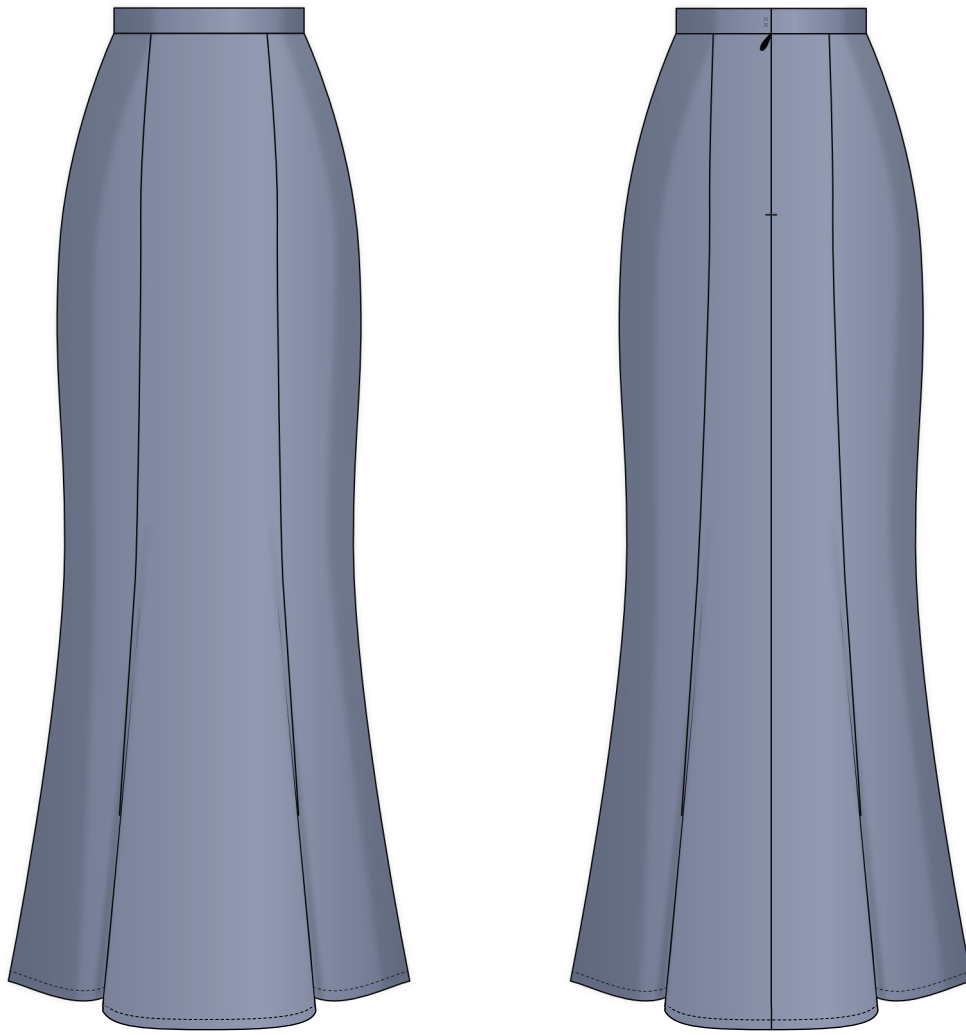


Back in 2016, when I was working on my first set of sewing instructions, I was trying to write them in such a way that even a complete beginner could easily understand and use them to create their very first garment. These instructions laid the foundation for the Vikisews brand, its vision and its mission. I wanted to create modern patterns with the utmost detailed and clear instructions.

Now, with each new collection we are constantly improving our instructions, amending them and adding more relevant details. By the time the final product reaches you, our drafters, correctors, and editors would have spent weeks perfecting every word and every photograph. If you compile a few of our instructions together, you will get a sewing manual that will assist you in sewing all kinds of garments at any difficulty level.

And I would be very happy if these instructions helped you to turn your hobby into a lifelong passion... Enjoy the process! Create your ultimate dream wardrobe! Wear your garments proudly for years to come!

If you have any questions, please contact us at [info@vikisews.com](mailto:info@vikisews.com) — we are always there to help.



## GRETA PATTERN DESCRIPTION

---

Greta is a godet skirt, semi-fitted at the top and flared below the knees. The skirt consists of six godet pieces and closes with an invisible zipper in the center back seam. The waistband fastens with a sew-on hook and bar closure. The skirt has a free-hanging lining and is midi length.



## IMPORTANT!

---

The contents of this pattern are copyright protected and belong exclusively to Vikisews. You may use Vikisews patterns for personal use. It is prohibited to share Vikisews patterns and instructions with third parties, as well as to publish patterns and instructions online for public access. **Non-compliance with the mentioned rules is a violation of the US copyright law and may result in civil liability and criminal prosecution.**

You may use Vikisews patterns for commercial use, to sew custom-made garments and/or create fashion collections, on the condition that the patterns are solely used in a manufacturing setting and are not further shared with individuals.

# TOTAL EASE ALLOWANCE

	Waistline ease	Hipline ease
cm	2.8–3.8	2.9–4
inches	1 1/8–1 1/2	1 1/8–1 5/8

# GARMENT LENGTH

Height, cm	Garment length including waistband, cm	Height, ft	Garment length including waistband, in
1 (154–160)	101.5	1 (5'1"–5'3")	40
2 (162–168)	105.5	2 (5'4"–5'6")	41 1/2
3 (170–176)	109.5	3 (5'7"–5'9")	43 1/8
4 (178–184)	113.5	4 (5'10"–6'1")	44 5/8

# SUGGESTED FABRIC

To sew this skirt, choose suiting fabrics with the following properties:

- medium weight, opaque, non-stretch or with very little stretch
  - the fiber content can include natural fibers (wool, silk, cotton, linen), artificial fibers (viscose), blends (wool + silk, wool + polyester, cotton + viscose, etc.), and synthetics (polyester, polyester + elastane).
- We recommend suiting fabric.

**Attention!** We do not recommend stretchy or lightweight fabrics.

For the lining, choose lining fabrics made of artificial fibers (viscose), blends (viscose + elastane, viscose + polyester), or synthetics (polyester, polyester + elastane).

The skirt in the photo is made of suiting fabric. The fabric is medium weight and has very little stretch. The fiber content is a blend of cotton, viscose, and elastane. The fabric weight is 320 g/m<sup>2</sup>. The lining is 100% viscose. The weight of the lining fabric is 100 g/m<sup>2</sup>.

# FABRIC AND NOTIONS REQUIREMENTS

1. Main fabric, 140 cm wide, with a directional print/nap, in meters:

Height, cm	Size				
	34	36	38-40	42-50	52
1 (154-160)	1.95	2	2.05	2.05	2.1
2 (162-168)	2.05	2.1	2.1	2.15	2.15
3 (170-176)	2.15	2.2	2.2	2.2	2.2
4 (178-184)	2.3	2.3	2.3	2.3	2.3

Main fabric, 55" wide, with a directional print/nap, in yards:

Height, ft	Size				
	34	36	38-40	42-50	52
1 (5'1"-5'3")	2 1/8	2 1/8	2 1/4	2 1/4	2 1/4
2 (5'4"-5'6")	2 1/4	2 1/4	2 1/4	2 3/8	2 3/8
3 (5'7"-5'9")	2 3/8	2 3/8	2 3/8	2 3/8	2 3/8
4 (5'10"-6'1")	2 1/2	2 1/2	2 1/2	2 1/2	2 1/2

2. Lining fabric, 140 cm wide, with a directional print, in meters:

Height, cm	Size						
	34-38	40	42	44	46	48	50-52
1 (154-160)	0.9	1.05	1.25	1.5	1.7	1.8	1.8
2 (162-168)	0.95	1.15	1.35	1.55	1.75	1.85	1.9
3 (170-176)	1	1.2	1.4	1.65	1.85	1.95	2
4 (178-184)	1.05	1.25	1.5	1.7	1.9	2	2.05

Lining fabric, 55" wide, with a directional print, in yards:

Height, ft	Size						
	34-38	40	42	44	46	48	50-52
1 (5'1"-5'3")	1	1 1/8	1 3/8	1 5/8	1 7/8	2	2
2 (5'4"-5'6")	1	1 1/4	1 1/2	1 3/4	1 7/8	2	2 1/8
3 (5'7"-5'9")	1 1/8	1 1/4	1 1/2	1 3/4	2	2 1/8	2 1/8
4 (5'10"-6'1")	1 1/8	1 3/8	1 5/8	1 7/8	2 1/8	2 1/8	2 1/4

3. Lightweight knit interfacing, 140 cm (55") wide, for all heights:

Size	34	36	38	40	42–44	46	48	50	52
meters	0.7	0.75	0.8	0.85	0.9	0.95	1	1.05	1.1
yards	3/4	7/8	7/8	7/8	1	1	1 1/8	1 1/8	1 1/4

**IMPORTANT!** When purchasing fabric, please account for shrinkage and buy 5% more than required.

4. One invisible zipper, 25 cm (9 7/8") long, for all sizes in all heights.

5. One trouser hook and bar closure.

6. Stitched bias-cut fusible stay tape with stitch reinforcement, 1–1.5 cm (3/8–5/8") wide, for all sizes in all heights — 41 cm (16 1/8").

7. Matching thread — 5 spools (1 spool for the sewing machine + 4 spools for the overlocker).

## TOOLS AND EQUIPMENT

- sewing machine for construction
- overlocker for finishing raw edges. This may be replaced with a stretch overlock stitch or a zigzag stitch on the sewing machine (overlock or zigzag stitch width 2–3 mm, stitch length 2.5 mm)
- stitch-in-the-ditch foot for the sewing machine (optional)
- invisible zipper foot for the sewing machine
- one-sided foot for the sewing machine

## PATTERN PIECES LIST

### 1. From main fabric:

- center front — cut 1 on fold
- side front — cut 2
- center back — cut 2
- side back — cut 2
- waistband — cut 1.

### 2. From lining fabric:

- front lining — cut 1 on fold
- back lining — cut 2.

### 3. From interfacing:

- waistband — cut 1.

**IMPORTANT!** Don't forget to transfer all pattern markings and notches onto the fabric.

# SEAM ALLOWANCES

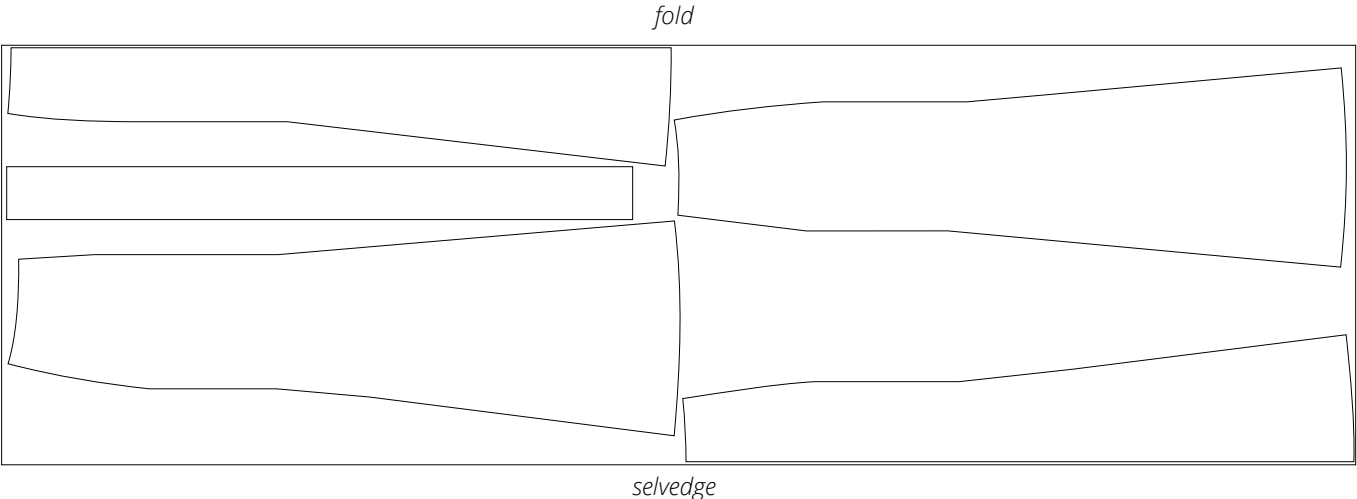
All pattern pieces include seam allowances as follows:

- garment hem allowance — 2 cm (3/4")
- all other edges — 1 cm (3/8").

Take this into account when laying out pattern pieces on the fabric.

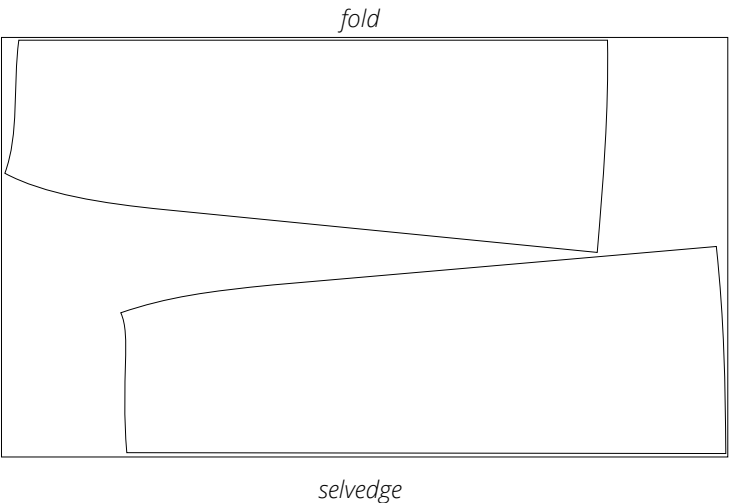
# CUTTING LAYOUT

Main fabric, 140 cm (55") wide, with a directional print/nap, cut on fold, for all sizes in all heights



Attention! Cut only one waistband piece.

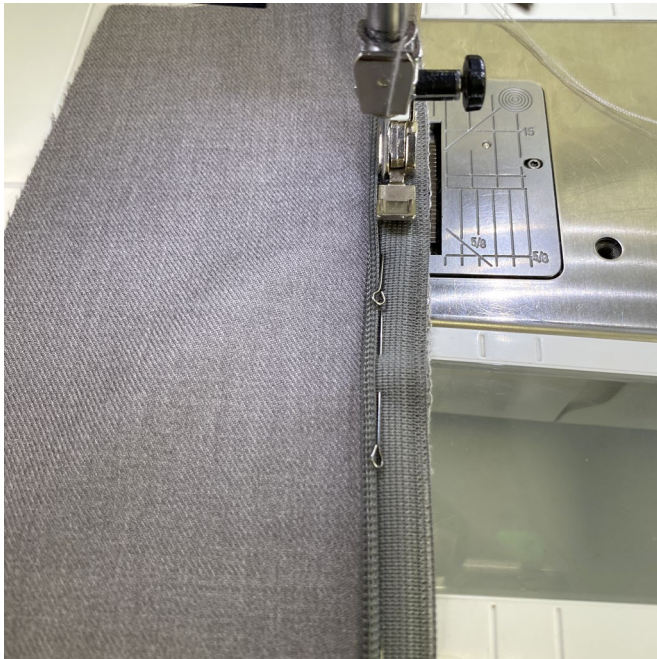
Lining fabric, 140 cm (55") wide, with a directional print, cut on fold, for sizes 34–40 in all heights







Open the zipper. Align one side of the zipper tape right sides together with the pressed center back edge, placing the zipper 1.2 cm (1/2") below the top edge. Pin and hand-baste the zipper tape in place.



Machine-stitch the zipper tape using an invisible zipper foot. Backstitch at the beginning and end of the seam.



Close the zipper. Using pins, transfer the reference markings onto the other side of the zipper tape.

Open the zipper and align the second side with the other pressed center back edge, matching the markings on the seam allowance and the zipper tape. Pin and hand-baste the zipper tape in place. Stitch on the sewing machine, backstitching at the beginning and end of the seam.