

FROM THE FOUNDER OF THE #VIKISEWS BRAND

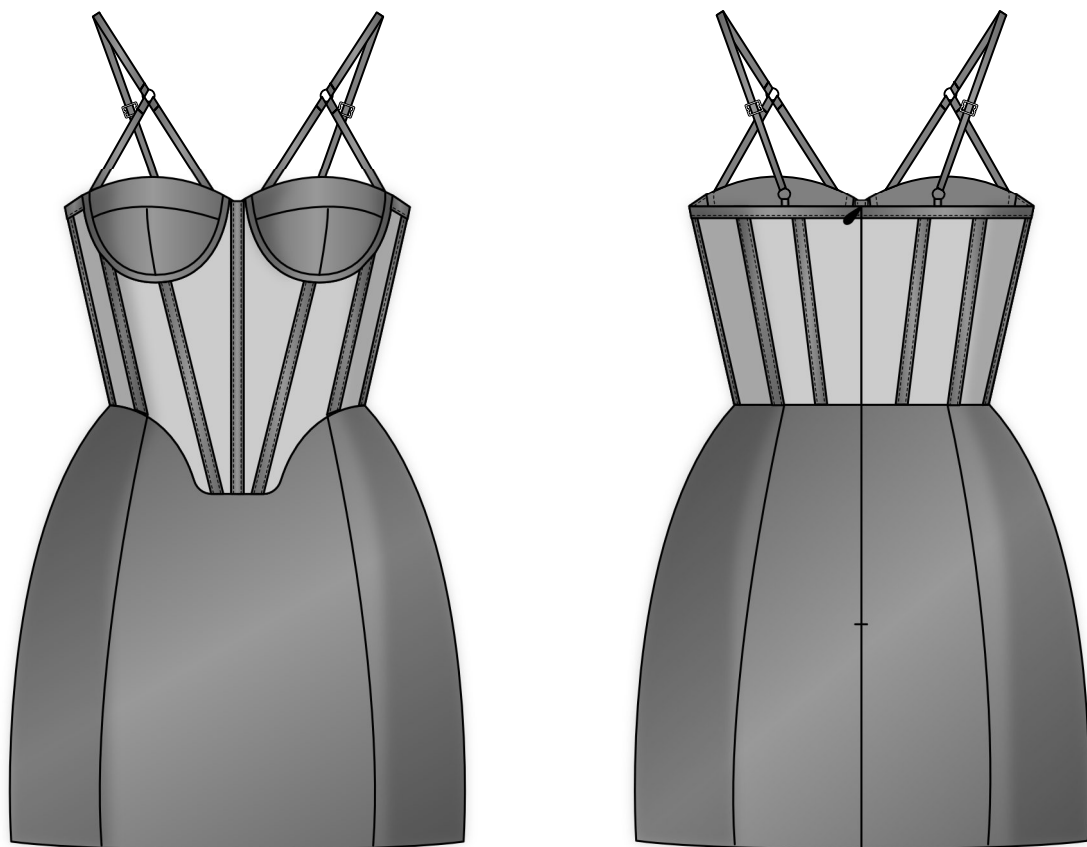


Back in 2016, when I was working on my first set of sewing instructions, I was trying to write them in such a way that even a complete beginner could easily understand and use them to create their very first garment. These instructions laid the foundation for the Vikisews brand, its vision and its mission. I wanted to create modern patterns with the utmost detailed and clear instructions.

Now, with each new collection we are constantly improving our instructions, amending them and adding more relevant details. By the time the final product reaches you, our drafters, correctors, and editors would have spent weeks perfecting every word and every photograph. If you compile a few of our instructions together, you will get a sewing manual that will assist you in sewing all kinds of garments at any difficulty level.

And I would be very happy if these instructions helped you to turn your hobby into a lifelong passion... Enjoy the process! Create your ultimate dream wardrobe! Wear your garments proudly for years to come!

If you have any questions, please contact us at info@vikisews.com — we are always there to help.



FRANNY PATTERN DESCRIPTION

Franny is a dress with a close-fitting bodice, a voluminous skirt, and an accentuated waist. It has adjustable straps and a waist seam shaped at the front. The lingerie-inspired corset bodice features bust cups made of bra foam. The front and back of the bodice are shaped with princess seams featuring rigilene boning inserted into applied channels. The skirt is stiffened with rigilene boning stitched to the princess seams, side seams, and hemline. The dress fastens with an invisible zipper in the center back seam. The skirt of the dress is fully lined. Franny is above-knee length.



IMPORTANT!

The contents of this pattern are copyright protected and belong exclusively to Vikisews. You may use Vikisews patterns for personal use. It is prohibited to share Vikisews patterns and instructions with third parties, as well as to publish patterns and instructions online for public access. **Non-compliance with the mentioned rules is a violation of the US copyright law and may result in civil liability and criminal prosecution.**

You may use Vikisews patterns for commercial use, to sew custom-made garments and/or create fashion collections, on the condition that the patterns are solely used in a manufacturing setting and are not further shared with individuals.

TOTAL EASE ALLOWANCE

	Bust ease	Waistline ease (estimated)	Hipline ease
cm	1.3–1.8	1.6–2	18–18.7
inches	1/2–3/4	5/8–3/4	7 1/8–7 3/8

GARMENT LENGTH

Height, cm	Back length from waist down (estimated), cm	Height, ft	Back length from waist down (estimated), in
1 (154–160)	35.2–37.2	1 (5'1"–5'3")	13 7/8–14 5/8
2 (162–168)	38.2–40.2	2 (5'4"–5'6")	15–15 7/8
3 (170–176)	41.2–43.2	3 (5'7"–5'9")	16 1/4–17
4 (178–184)	44.2–46.2	4 (5'10"–6'1")	17 3/8–18 1/4

SUGGESTED FABRIC

To sew this dress, choose dress-weight fabrics with the following properties: medium weight, non-stretch or low-stretch. The fiber content can include natural fibers, artificial fibers, blends, or synthetics.

The following fabrics are recommended: satin, jacquard, taffeta, corset mesh.

For the cups, we recommend using 3 mm (1/8") thick bra foam. The foam is double-faced. The fiber content is polyester and cotton.

Attention! We do not recommend stretchy knit fabrics and lightweight sheer fabrics (chiffon, organza, stretch lace).

The dress in the photo is made of jacquard. The fabric is medium weight, soft, and low-stretch. The fiber content is a blend of polyester (80%) and viscose (17%). The fabric weight is 233 g/m².

The additional fabric (corset mesh) is 100% polyester. The fabric weight is 45 g/m².

The lining is a blend of polyester (55%) and viscose (45%). The fabric weight is 100 g/m².

FABRIC AND NOTIONS REQUIREMENTS

1. Main fabric, 140 cm wide, with a directional print/nap, in meters:

Height, cm	Size 34			Sizes 36–44			Sizes 46–52		
	Step 1	Step 2	Total	Step 1	Step 2	Total	Step 1	Step 2	Total
1 (154–160)	0.25	0.85	1.1	0.3	0.85	1.15	0.35	0.9	1.25
2 (162–168)	0.25	0.9	1.15	0.3	0.9	1.2	0.35	0.95	1.3
3 (170–176)	0.25	0.95	1.2	0.3	0.95	1.25	0.35	1	1.35
4 (178–184)	0.25	1.05	1.3	0.3	1.05	1.35	0.35	1.1	1.45

Main fabric, 55" wide, with a directional print/nap, in yards:

Height, ft	Size 34			Sizes 36–44			Sizes 46–52		
	Step 1	Step 2	Total	Step 1	Step 2	Total	Step 1	Step 2	Total
1 (5'1"–5'3")	1/4	7/8	1 1/4	3/8	7/8	1 1/4	3/8	1	1 3/8
2 (5'4"–5'6")	1/4	1	1 1/4	3/8	1	1 1/4	3/8	1	1 3/8
3 (5'7"–5'9")	1/4	1	1 1/4	3/8	1	1 3/8	3/8	1 1/8	1 1/2
4 (5'10"–6'1")	1/4	1 1/8	1 3/8	3/8	1 1/8	1 1/2	3/8	1 1/4	1 5/8

2. Additional fabric (corset mesh), 150 cm wide, with a directional print, in meters:

Height, cm	Size	
	34–42	44–52
1 (154–160)	0.25	0.3
2 (162–168)	0.25	0.3
3 (170–176)	0.25	0.3
4 (178–184)	0.25	0.3

Additional fabric (corset mesh), 59" wide, with a directional print, in yards:

Height, ft	Size	
	34–42	44–52
1 (5'1"–5'3")	1/4	3/8
2 (5'4"–5'6")	1/4	3/8
3 (5'7"–5'9")	1/4	3/8
4 (5'10"–6'1")	1/4	3/8

3. Lining fabric, 140 cm wide, with a directional print, in meters:

Height, cm	Size		
	34-44	46	48-52
1 (154-160)	0.85	0.9	0.9
2 (162-168)	0.9	0.9	0.95
3 (170-176)	0.95	1	1
4 (178-184)	1.05	1.1	1.1

Lining fabric, 55" wide, with a directional print, in yards:

Height, ft	Size	
	34-44	46-52
1 (5'1"-5'3")	7/8	1
2 (5'4"-5'6")	1	1
3 (5'7"-5'9")	1	1 1/8
4 (5'10"-6'1")	1 1/8	1 1/4

4. Bra foam, 3 mm (1/8") thick, 50 cm (19") wide, for all heights:

Size	34-40	42	44-48	50-52
meters	0.2	0.25	0.3	0.35
yards	1/4	1/4	3/8	3/8

IMPORTANT! When purchasing fabric, please account for shrinkage and buy 5% more than required.

5. Lightweight interfacing, knit or woven, 140 cm (55") wide, for all heights:

Size	34			36			38-42		
	Step 1	Step 2	Total	Step 1	Step 2	Total	Step 1	Step 2	Total
meters	0.25	0.4	0.65	0.3	0.4	0.7	0.3	0.45	0.75
yards	1/4	3/8	3/4	3/8	3/8	3/4	3/8	1/2	7/8

Size	44			46-48			50-52		
	Step 1	Step 2	Total	Step 1	Step 2	Total	Step 1	Step 2	Total
meters	0.3	0.5	0.8	0.35	0.8	0.85	0.35	0.55	0.9
yards	3/8	1/2	7/8	3/8	1/2	7/8	3/8	5/8	1

6. Stitched bias-cut fusible stay tape with stitch reinforcement, 1.5 cm (5/8") wide — 0.4 m (3/8 yd)

7. One invisible zipper, 40 cm (15 3/4") long, for all sizes in all heights

8. Bra strap elastic, 1 cm (3/8") wide:

Size	34-40	42-46	48-52
meters	1.5	1.6	1.7
yards	1 5/8	1 3/4	1 7/8

9. Rigilene boning, 1 cm wide, for princess and side seams, in meters:

Height, cm	Size	
	34-44	46-52
1 (154-160)	1.6	1.7
2 (162-168)	1.7	1.8
3 (170-176)	1.8	1.9
4 (178-184)	1.9	2

Rigilene boning, 3/8" wide, for princess and side seams, in yards:

Height, ft	Size	
	34-44	46-52
1 (5'1"-5'3")	1 3/4	1 7/8
2 (5'4"-5'6")	1 7/8	2
3 (5'7"-5'9")	2	2 1/8
4 (5'10"-6'1")	2 1/8	2 1/8

10. Rigilene boning, 0.7 cm wide, for bodice seams and skirt hem, in meters:

Height, cm	Size		
	34-38	40-44	46-52
1 (154-160)	3.1	3.2	3.3
2 (162-168)	3.2	3.3	3.4
3 (170-176)	3.3	3.4	3.5
4 (178-184)	3.4	3.5	3.6

Rigilene boning, 1/4" wide, for bodice seams and skirt hem, in yards:

Height, ft	Size		
	34-38	40-44	46-52
1 (5'1"-5'3")	3 3/8	3 1/2	3 5/8
2 (5'4"-5'6")	3 1/2	3 5/8	3 3/4
3 (5'7"-5'9")	3 5/8	3 3/4	3 7/8
4 (5'10"-6'1")	3 3/4	3 7/8	3 7/8

11. One pair of bra underwires (in the necessary size)

12. Two strap slide adjusters, 1 cm (3/8") wide

13. Four strap rings for the ring holders, 1 cm (3/8") in diameter

14. One sew-on hook and eye closure

15. Matching thread — 1 spool

TOOLS AND EQUIPMENT

- sewing machine for construction
- invisible zipper foot for the sewing machine
- bias tape maker

PATTERN PIECES LIST

1. From main fabric:

- center front skirt — cut 1 on fold
- side front skirt — cut 2
- center back skirt — cut 2
- side back skirt — cut 2
- top cup* — cut 2
- side cup* — cut 2
- center cup* — cut 2
- center front channel — cut 1
- mid front channel — cut 2
- side front channel — cut 2
- side back channel — cut 2
- mid back channel — cut 2
- center back channel — cut 2
- underwire channel — cut 2
- back top edge binding — cut 2

IMPORTANT! Interface (block fuse) a big enough piece of the main fabric before cutting the pieces marked with an asterisk (*) out of it. Interface in two steps: first apply interfacing on the straight grain (the same as on the main fabric), then apply it on the cross grain.

2. From additional fabric (corset mesh):

- center front bodice — cut 2
- mid front bodice — cut 2
- side front bodice — cut 2
- side back bodice — cut 2
- mid back bodice — cut 2
- center back bodice — cut 2
- cup seam binding — cut 2

3. From lining fabric:

- center front skirt — cut 1 on fold
- side front skirt — cut 2
- center back skirt — cut 2
- side back skirt — cut 2
- zipper binding — cut 1

IMPORTANT! Don't forget to transfer all pattern markings and notches onto the fabric.

4. From interfacing:

- top cup — cut 4
- side cup — cut 4
- center cup — cut 4
- center front channel — cut 1
- mid front channel — cut 2
- side front channel — cut 2
- side back channel — cut 2
- mid back channel — cut 2
- center back channel — cut 2
- underwire channel — cut 2
- back top edge binding — cut 2

5. From bra foam:

- top cup — cut 2
- side cup — cut 2
- center cup — cut 2

IMPORTANT! Cut the foam cup pieces last, trimming the following seam allowances before cutting:

- top and bottom seam allowances on the top cup pattern piece
- top and center seam allowances on the center cup and side cup pattern pieces

SEAM ALLOWANCES

All pattern pieces include seam allowances as follows:

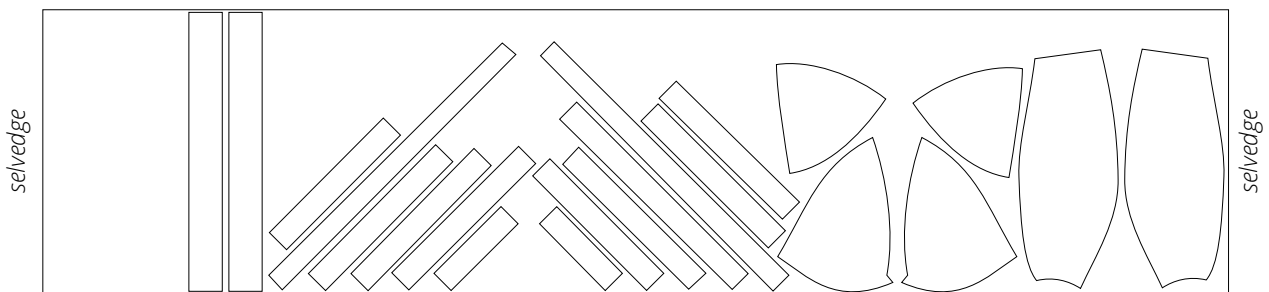
- garment hem allowance — 2.5 cm (1")
- top edge on the center back, mid back, and side back bodice pieces — 0 cm
- top edge on the side front bodice pieces — 0 cm
- all other edges — 1 cm (3/8")

Take this into account when laying out pattern pieces on the fabric.

CUTTING LAYOUT

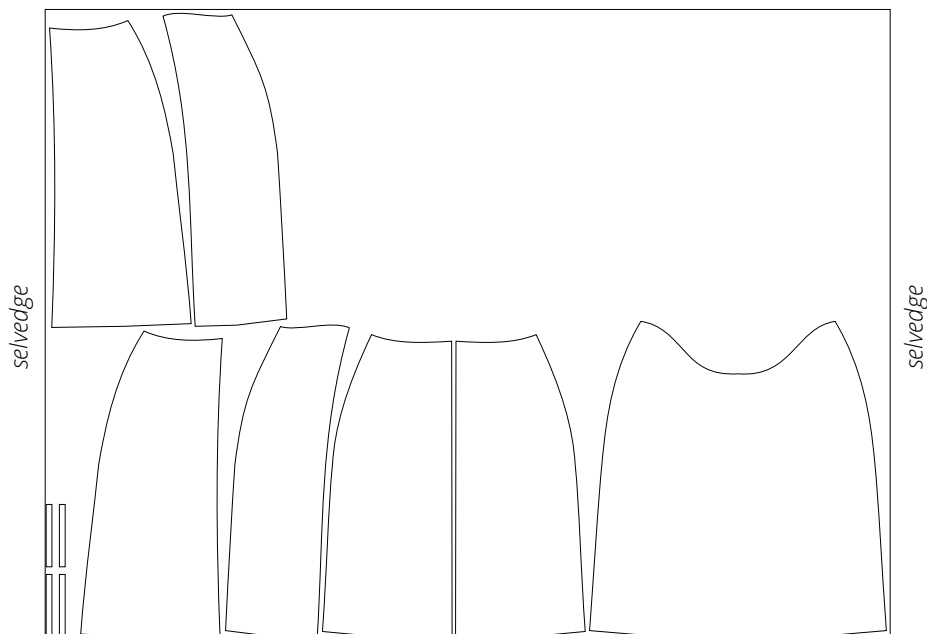
Main fabric, 140 cm (55") wide, with a directional print/nap,
cut on a single layer, for all sizes in all heights

Step 1



Main fabric, 140 cm (55") wide, with a directional print/nap,
cut on a single layer, for all sizes in all heights

Step 2





Apply stitched bias-cut fusible stay tape along the following:

- zipper section of the center seam allowance plus 1 cm (3/8") below the zipper notch on the center back skirt pieces

Apply the fusible stay tape along the edge so that the reinforcement stitches on the tape align with the seam line.



Sew the foam cups prior to the fitting.

In order to reduce the bulk, the foam cup pieces should be cut without the following seam allowances:

- top and bottom seam allowances on the top cup piece
- top and center seam allowances on the center cup and side cup pieces



To join the side cup and center cup foam pieces, butt their center seam edges, match the notches, and stitch them together with a zigzag stitch (1.5 mm stitch length, 5 mm stitch width).