

FROM THE FOUNDER OF THE #VIKISEWS BRAND

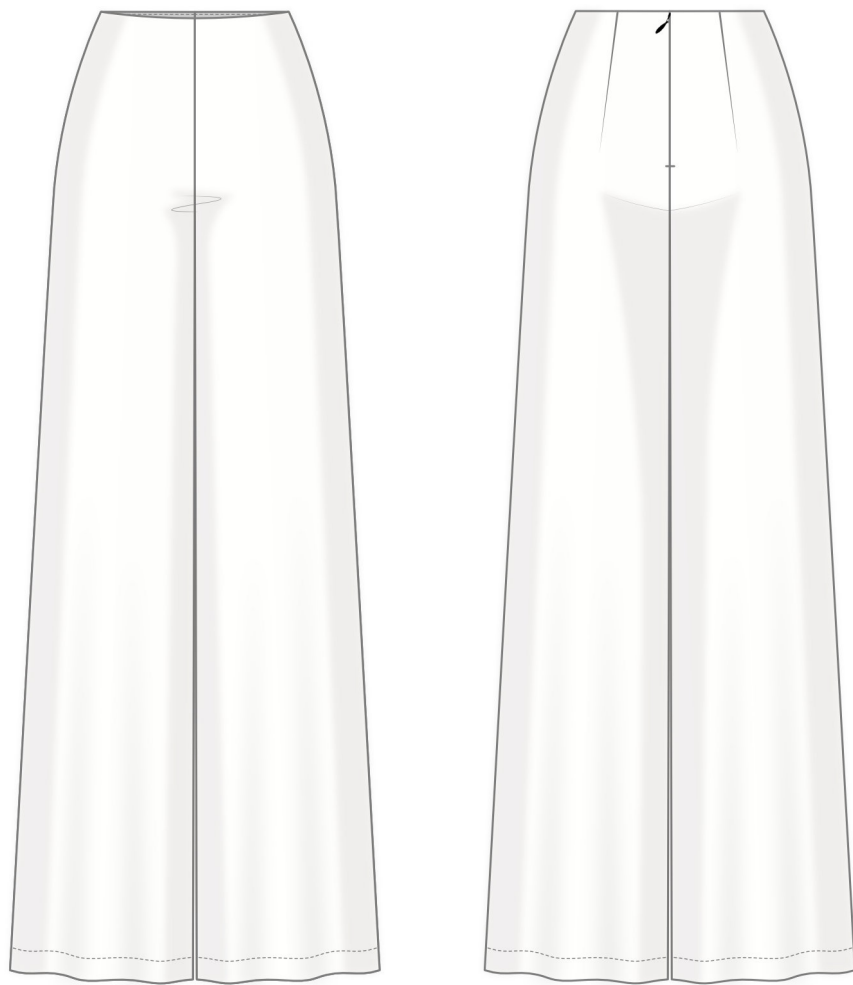


Back in 2016, when I was working on my first set of sewing instructions, I was trying to write them in such a way that even a complete beginner could easily understand and use them to create their very first garment. These instructions laid the foundation for the Vikisews brand, its vision and its mission. I wanted to create modern patterns with the utmost detailed and clear instructions.

Now, with each new collection we are constantly improving our instructions, amending them and adding more relevant details. By the time the final product reaches you, our drafters, correctors, and editors would have spent weeks perfecting every word and every photograph. If you compile a few of our instructions together, you will get a sewing manual that will assist you in sewing all kinds of garments at any difficulty level.

And I would be very happy if these instructions helped you to turn your hobby into a lifelong passion... Enjoy the process! Create your ultimate dream wardrobe! Wear your garments proudly for years to come!

If you have any questions, please contact us at info@vikisews.com — we are always there to help.



TASHA PATTERN DESCRIPTION

Tasha is a pair of straight-cut trousers widening slightly towards the bottom. The back is shaped with waist darts. The top edge is finished with a facing. There is an invisible zipper in the center back seam. The trousers extend below the ankle.



IMPORTANT!

The contents of this pattern are copyright protected and belong exclusively to Vikisews. You may use Vikisews patterns for personal use. It is prohibited to share Vikisews patterns and instructions with third parties, as well as to publish patterns and instructions online for public access. **Non-compliance with the mentioned rules is a violation of the US copyright law and may result in civil liability and criminal prosecution.**

You may use Vikisews patterns for commercial use, to sew custom-made garments and/or create fashion collections, on the condition that the patterns are solely used in a manufacturing setting and are not further shared with individuals.

TOTAL EASE ALLOWANCE

	Waistline ease	Hipline ease
cm	0.7	2.5
inches	1/4	1

GARMENT LENGTH, HEM WIDTH

Height, cm	Side seam length, cm	Finished hem width, cm
1 (154–160)	102.7–108.4	36.8–42.5
2 (162–168)	106.7–112.3	36.8–42.5
3 (170–176)	110.5–116.1	36.8–42.5
4 (178–184)	114.3–120	36.8–42.5

Height, ft	Side seam length, in	Finished hem width, in
1 (5'1"–5'3")	40 3/8–42 5/8	14 1/2–16 3/4
2 (5'4"–5'6")	42–44 1/4	14 1/2–16 3/4
3 (5'7"–5'9")	43 1/2–45 3/4	14 1/2–16 3/4
4 (5'10"–6'1")	45–47 1/4	14 1/2–16 3/4

SUGGESTED FABRIC

To sew these trousers, choose dress-weight fabrics that are medium weight, pliable, soft, non-stretch or low-stretch, and opaque. The fiber content can include natural fibers, artificial fibers, blends, or synthetics.

Recommended fabrics: satin, viscose, crepe de chine, sateen, natural silk, artificial silk.

The trousers in the photos are made of satin. The fabric is medium weight, pliable, soft, with a little stretch. The fiber content is 100% polyester. The fabric weight is 240 g/m².

FABRIC AND NOTIONS REQUIREMENTS

1. Main fabric, 140 cm wide, with a directional print/nap, in meters:

Height, cm	Size					
	34-36	38-40	42	44	46	48-52
1 (154-160)	1.95	2	2.05	2.15	2.25	2.3
2 (162-168)	2.05	2.1	2.15	2.25	2.35	2.4
3 (170-176)	2.1	2.15	2.2	2.3	2.4	2.45
4 (178-184)	2.15	2.25	2.3	2.4	2.5	2.55

Main fabric, 55" wide, with a directional print/nap, in yards:

Height, ft	Size				
	34-36	38-40	42	44	46-52
1 (5'1"-5'3")	2 1/8	2 1/8	2 1/4	2 3/8	2 1/2
2 (5'4"-5'6")	2 1/4	2 1/4	2 3/8	2 1/2	2 5/8
3 (5'7"-5'9")	2 1/4	2 3/8	2 3/8	2 1/2	2 5/8
4 (5'10"-6'1")	2 3/8	2 1/2	2 1/2	2 5/8	2 3/4

IMPORTANT! When purchasing fabric, please account for shrinkage and buy 5% more than required.

2. Lightweight interfacing, knit or woven, 140 cm (55") wide, for all sizes and heights – 0.6 m (5/8 yd).
3. Stitched bias-cut fusible stay tape with stitch reinforcement, 1 cm (3/8") wide – 1.1 m (1 1/4 yd).
4. One invisible zipper, 25 cm (10") long, for all sizes and heights.
5. One sew-on hook-and-eye closure.
6. Matching thread – 4 spools (1 spool for the sewing machine + 3 spools for the overlocker).

TOOLS AND EQUIPMENT

- sewing machine for construction
- overlocker for finishing raw edges. This may be replaced with a stretch overlock stitch or a zigzag stitch on the sewing machine (overlock or zigzag stitch width 2–3 mm, stitch length 2.5 mm)
- invisible zipper foot for the sewing machine
- one-sided foot for the sewing machine

PATTERN PIECES LIST

1. From main fabric:

- front leg – cut 2
- back leg – cut 2
- front facing – cut 1
- back facing – cut 2

***IMPORTANT!** Don't forget to transfer all pattern markings and notches onto the fabric.*

2. From interfacing:

- front facing – cut 1
- back facing – cut 2

SEAM ALLOWANCES

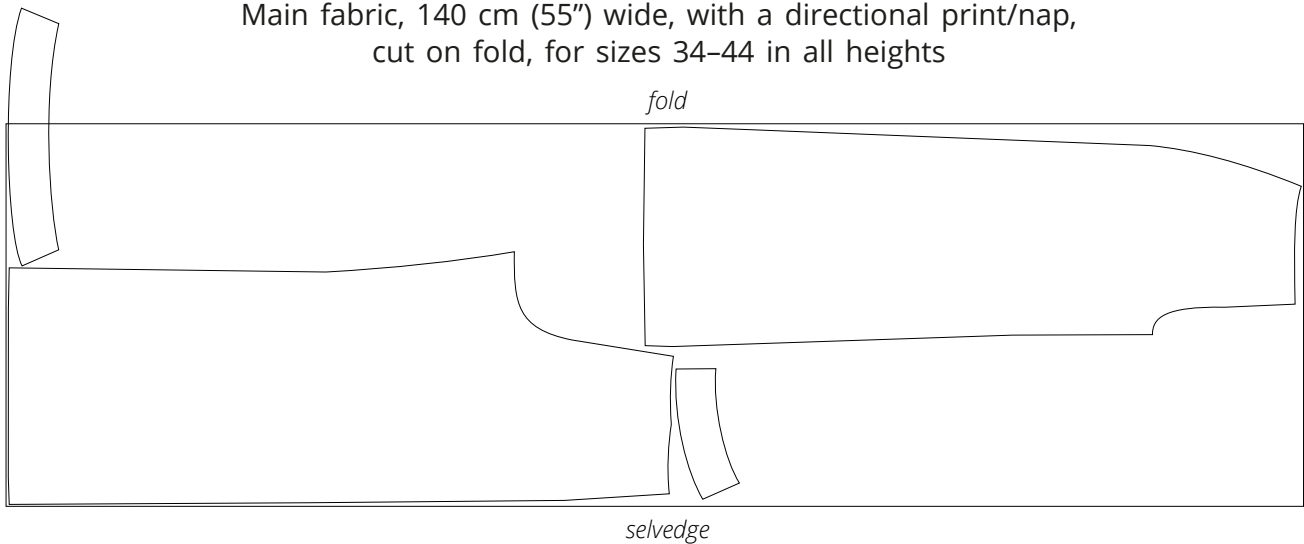
All pattern pieces include seam allowances as follows:

- garment hem allowance – 4 cm (1 5/8")
- all other edges – 1 cm (3/8")

Take this into account when laying out pattern pieces on the fabric.

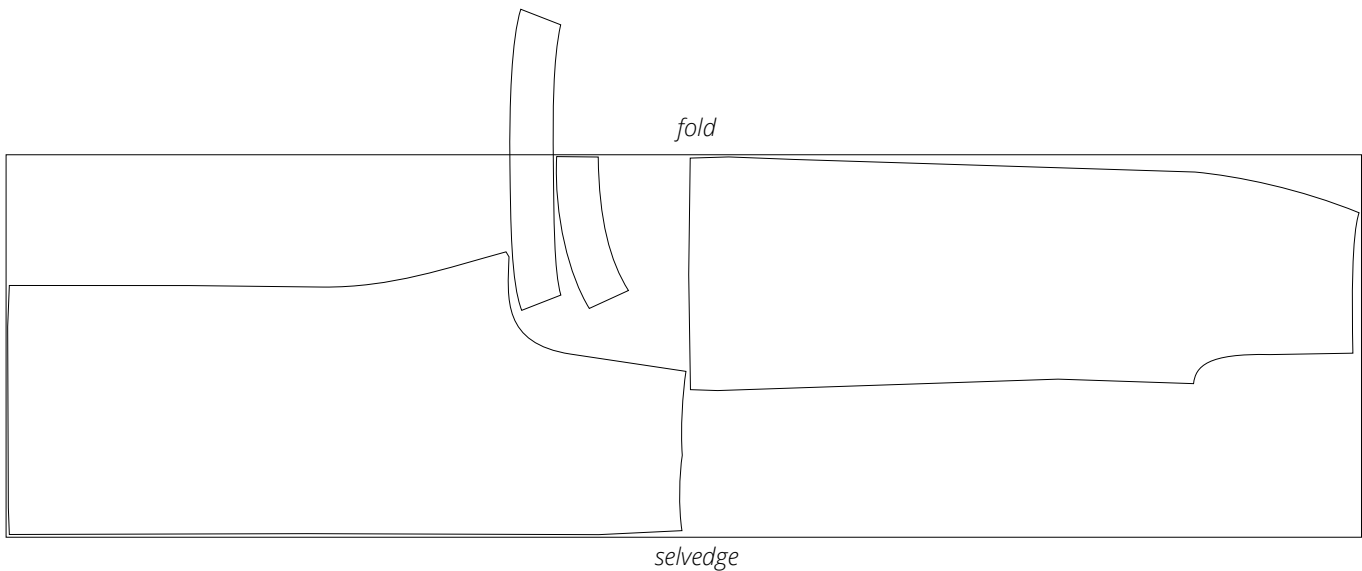
CUTTING LAYOUT

Main fabric, 140 cm (55") wide, with a directional print/nap,
cut on fold, for sizes 34-44 in all heights



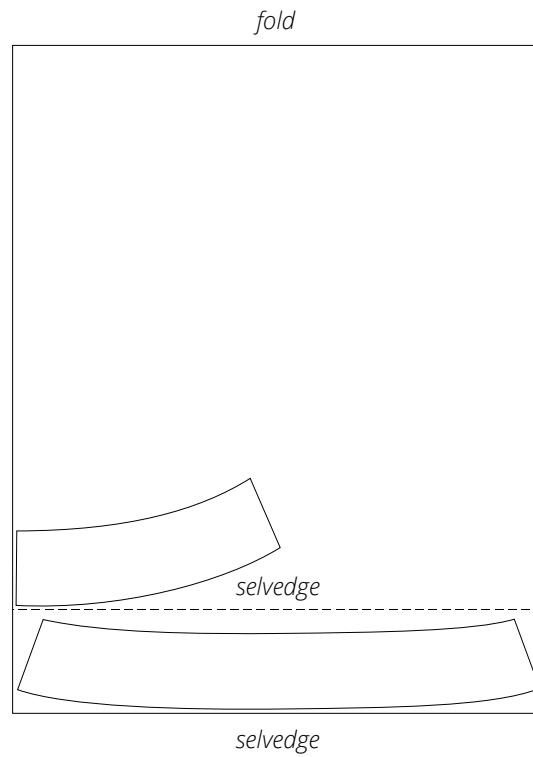
Important! Cut only one front facing piece on a single layer out of leftover fabric.

Main fabric, 140 cm (55") wide, with a directional print/nap,
cut on fold, for sizes 46-52 in all heights



Important! Cut only one front facing piece on a single layer out of leftover fabric.

Interfacing, 140 cm (55") wide, cut on a partial fold,
for all sizes in all heights



READY? LET'S GET SEWING!



With the right side of the fabric facing up, overlock the crotch seam edge on both legs.



Turn one of the legs right side out, keeping the other leg wrong side out.

Insert one leg into the other, right sides together. Align the crotch seam edges, matching the notches and inseams. Pin in place up to the zipper notch.



Machine-stitch with a double seam, with the second stitching line exactly over the first one. Backstitch at the beginning and end.

Press the seam flat.