

# FROM THE FOUNDER OF THE #VIKISEWS BRAND

---

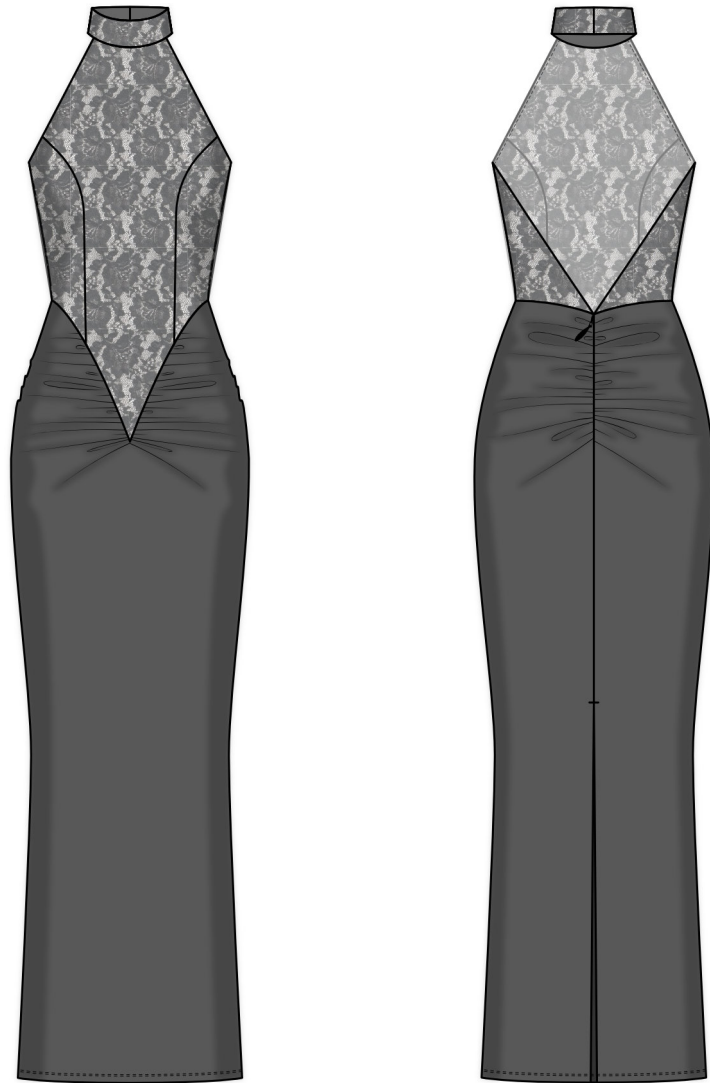


Back in 2016, when I was working on my first set of sewing instructions, I was trying to write them in such a way that even a complete beginner could easily understand and use them to create their very first garment. These instructions laid the foundation for the Vikisews brand, its vision and its mission. I wanted to create modern patterns with the utmost detailed and clear instructions.

Now, with each new collection we are constantly improving our instructions, amending them and adding more relevant details. By the time the final product reaches you, our drafters, correctors, and editors would have spent weeks perfecting every word and every photograph. If you compile a few of our instructions together, you will get a sewing manual that will assist you in sewing all kinds of garments at any difficulty level.

And I would be very happy if these instructions helped you to turn your hobby into a lifelong passion... Enjoy the process! Create your ultimate dream wardrobe! Wear your garments proudly for years to come!

If you have any questions, please contact us at [info@vikisews.com](mailto:info@vikisews.com) — we are always there to help.



## WISTERIA PATTERN DESCRIPTION

---

Wisteria is a close-fitting dress with an accentuated waist. The waist seam is shaped at the front. The front is fitted with princess seams, while the back is open down to the waistline. The skirt is loosely gathered along the waist seam at the front and along the center seam at the back. The stand collar closes with buttons at the back. The center back seam features an invisible zipper, a hook-and-eye closure, and a high slit. Wisteria is below-ankle length.



## IMPORTANT!

---

The contents of this pattern are copyright protected and belong exclusively to Vikisews. You may use Vikisews patterns for personal use. It is prohibited to share Vikisews patterns and instructions with third parties, as well as to publish patterns and instructions online for public access. **Non-compliance with the mentioned rules is a violation of the US copyright law and may result in civil liability and criminal prosecution.**

You may use Vikisews patterns for commercial use, to sew custom-made garments and/or create fashion collections, on the condition that the patterns are solely used in a manufacturing setting and are not further shared with individuals.

# TOTAL EASE ALLOWANCE

	Bust ease	Waistline ease	Hipline ease
cm	-11.7 to -9.4	-5.8	-0.8 to 4.6
inches	-4 5/8 to -3 3/4	-2 1/4	-3/8 to 1 3/4

# GARMENT LENGTH

Height, cm	Garment length, cm	Height, ft	Garment length, in
1 (154–160)	90	1 (5'1"–5'3")	35 3/8
2 (162–168)	93	2 (5'4"–5'6")	36 5/8
3 (170–176)	96	3 (5'7"–5'9")	37 3/4
4 (178–184)	99	4 (5'10"–6'1")	39

# SUGGESTED FABRIC

To sew this dress, choose soft, stretchy, medium-weight knit fabrics made of natural fibers, artificial fibers, blends, or synthetics.

The following fabrics are recommended: ITY knits, lightweight double knits, regular knits. The stretch factor should be 1.5–1.8.

You can determine the stretch factor of the fabric yourself. Mark 10 cm (4") along the crosswise grain of the fabric, lay a ruler next to the marked section, and stretch the fabric. Divide the measurement you get by 10.

The dress in the photo is made of three types of fabric: ITY knit fabric, stretch mesh, and lace.

**Fabric 1 (lace):** the fabric is medium weight, soft, pliable, and low-stretch. The fiber content is 100% cotton. The fabric weight is 170 g/m².

**Fabric 2 (stretch mesh):** the fabric is thin, soft, pliable, and stretchy. The fiber content is 80% polyester and 20% elastane. The fabric weight is 100 g/m². The stretch factor is 1.6.

**ITY knit:** the fabric is thin, soft, and stretchy. The fiber content is 95% polyester and 5% elastane. The fabric weight is 200 g/m². The stretch factor is 1.8.

# FABRIC AND NOTIONS REQUIREMENTS

1. Knit fabric, 140 cm wide, with a directional print/nap, in meters:

Height, cm	Size						
	34-36	38	40	42	44	46	48-52
1 (154-160)	1.15	1.15	1.6	1.85	1.9	1.9	2
2 (162-168)	1.15	1.15	1.85	1.9	1.95	1.95	2.05
3 (170-176)	1.2	1.65	1.9	1.95	2	2	2.05
4 (178-184)	1.2	1.9	1.95	2	2	2.05	2.1

Knit fabric, 55" wide, with a directional print/nap, in yards:

Height, ft	Size						
	34-36	38	40	42	44	46	48-52
1 (5'1"-5'3")	1 1/4	1 1/4	1 1/4	2	2 1/8	2 1/8	2 1/8
2 (5'4"-5'6")	1 1/4	1 1/4	2	2 1/8	2 1/8	2 1/8	2 1/4
3 (5'7"-5'9")	1 1/4	1 3/4	2 1/8	2 1/8	2 1/8	2 1/8	2 1/4
4 (5'10"-6'1")	1 1/4	2 1/8	2 1/8	2 1/8	2 1/8	2 1/4	2 1/4

2. Main fabric 1 and 2 (stretch mesh and lace), 140 cm wide, cut in one direction, in meters:

Height, cm	Size					
	34	36	38-42	44-46	48	50-52
1 (154-160)	0.6	0.65	0.65	0.65	0.65	0.7
2 (162-168)	0.65	0.65	0.65	0.7	0.7	0.7
3 (170-176)	0.65	0.65	0.7	0.7	0.7	0.7
4 (178-184)	0.7	0.7	0.7	0.7	0.75	0.75

Main fabric 1 and 2 (stretch mesh and lace), 55" wide, cut in one direction, in yards:

Height, ft	Size		
	34	36-46	48-52
1 (5'1"-5'3")	5/8	3/4	3/4
2 (5'4"-5'6")	3/4	3/4	3/4
3 (5'7"-5'9")	3/4	3/4	3/4
4 (5'10"-6'1")	3/4	3/4	7/8

3. Main fabric (all garment pieces cut from one fabric type), 140 cm wide, with a directional print/nap, in meters:

Height, cm	Size						
	34-36	38	40	42	44	46	48-52
1 (154-160)	1.4	1.55	1.65	1.85	1.9	1.9	2
2 (162-168)	1.45	1.6	1.85	1.9	1.95	1.95	2.05
3 (170-176)	1.5	1.65	1.9	1.95	2	2	2.05
4 (178-184)	1.55	1.9	1.95	2	2	2.05	2.1

Main fabric (all garment pieces cut from one fabric type), 55" cm wide, with a directional print/nap, in yards:

Height, ft	Size						
	34-36	38	40	42	44	46	48-52
1 (5'1"-5'3")	1 1/2	1 3/4	1 3/4	2	2 1/8	2 1/8	2 1/8
2 (5'4"-5'6")	1 5/8	1 3/4	2	2 1/8	2 1/8	2 1/8	2 1/4
3 (5'7"-5'9")	1 5/8	1 3/4	2 1/8	2 1/8	2 1/8	2 1/8	2 1/4
4 (5'10"-6'1")	1 3/4	2 1/8	2 1/8	2 1/8	2 1/8	2 1/4	2 1/4

**IMPORTANT!** When purchasing fabric, please account for shrinkage and buy 5% more than required.

4. Clear elastic, 1 cm (3/8") wide, for all heights:

Size	34	36	38	40	42	44	46	48	50	52
Meters	1.15	1.2	1.25	1.3	1.35	1.4	1.45	1.5	1.6	1.65
Yards	1 1/4	1 1/4	1 3/8	1 3/8	1 1/2	1 1/2	1 5/8	1 5/8	1 3/4	1 3/4

5. One invisible zipper, 20-25 cm (7 7/8-9 7/8") long, for all sizes in all heights

6. Two buttons, 0.7-1 cm (1/4-3/8") in diameter

7. One hook-and-eye closure

8. Matching thread — 5 spools (1 spool for the sewing machine + 4 spools for the overlocker)

# TOOLS AND EQUIPMENT

---

- sewing machine for construction
- overlocker for construction and finishing raw edges. This may be replaced with a stretch overlock stitch or a zigzag stitch on the sewing machine (overlock or zigzag stitch width 2–3 mm, stitch length 2.5 mm)
- coverstitch or coverlock machine for finishing the garment armholes and hem. It can be replaced with a twin needle on a regular sewing machine that can do a zigzag stitch
- invisible zipper foot for the sewing machine
- loop turner

**IMPORTANT!** We recommend using specialty needles when working with knit fabrics (for example, STRETCH, SUPER STRETCH, JERSEY, etc.). When sewing, a ball-shaped needle point pushes the knit loops apart without piercing the threads.

## PATTERN PIECES LIST

---

### 1. From main fabric 1 (lace):

- front bodice — cut 1 on fold
- side bodice — cut 2
- stand collar — cut 1

### 2. From main fabric 2 (stretch mesh):

- front bodice — cut 1 on fold
- side bodice — cut 2
- top edge binding — cut 2

### 3. From knit fabric:

- front skirt — cut 1 on fold
- back skirt — cut 2
- rouleau strap for button loops — cut 1 (2 pieces)

**IMPORTANT!** Don't forget to transfer all pattern markings and notches onto the fabric.

## SEAM ALLOWANCES

---

All pattern pieces include seam allowances as follows:

- center seam allowance on the back skirt — 1.5 cm (5/8")
- garment hem allowance — 2 cm (3/4")
- all other edges — 1 cm (3/8")

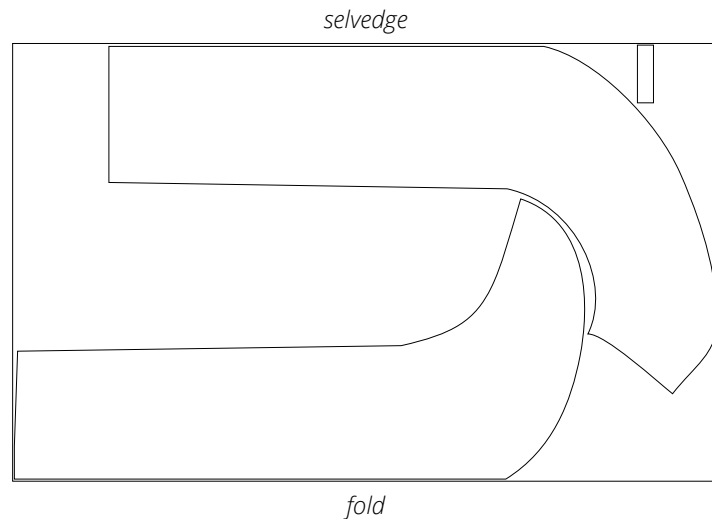
Take this into account when laying out pattern pieces on the fabric.

# CUTTING LAYOUT

---

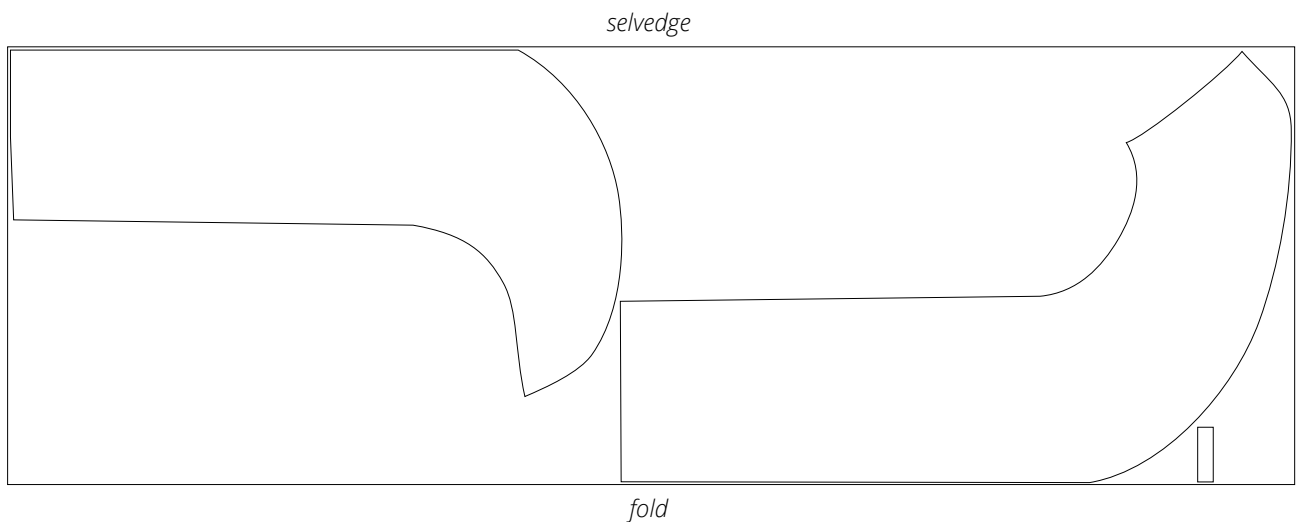
## Option 1 (with stretch mesh and lace)

Knit fabric, 140 cm (55") wide, with a directional print/nap, cut on fold,  
for sizes 34–36 in all heights and size 38 in heights 1–2



**Attention!** Cut one rouleau strap for button loops piece only.

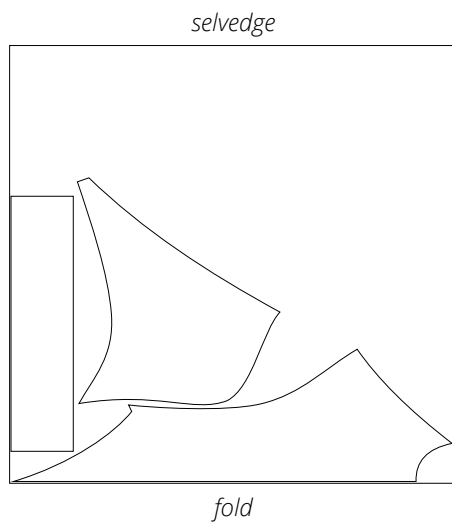
Knit fabric, 140 cm (55") wide, with a directional print/nap, cut on fold,  
for size 38 in heights 3–4 and sizes 40–52 in all heights



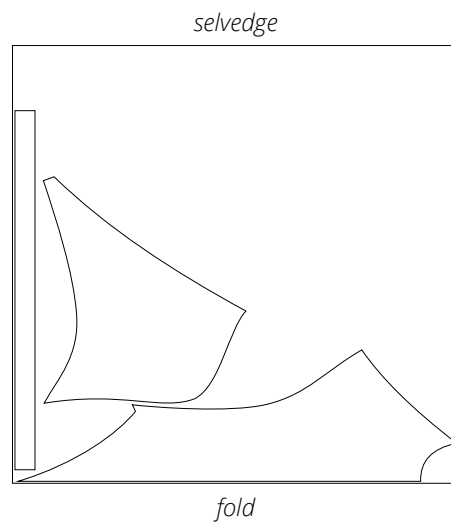
**Attention!** Cut one rouleau strap for button loops piece only.



Main fabric 1 (lace), 140 cm (55") wide, cut in one direction on fold, for all sizes in all heights



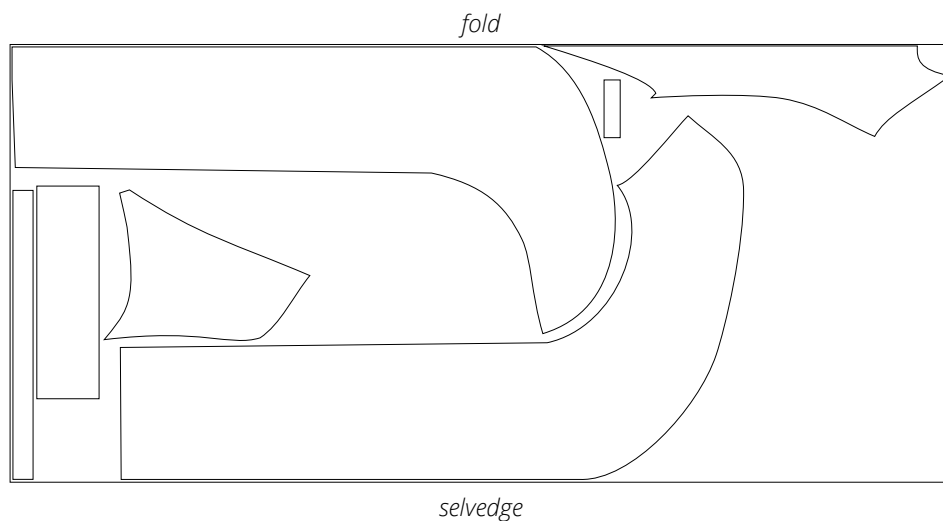
Main fabric 2 (stretch mesh), 140 cm (55") wide, cut in one direction on fold, for all sizes in all heights



**Attention!** Cut one stand collar piece only.

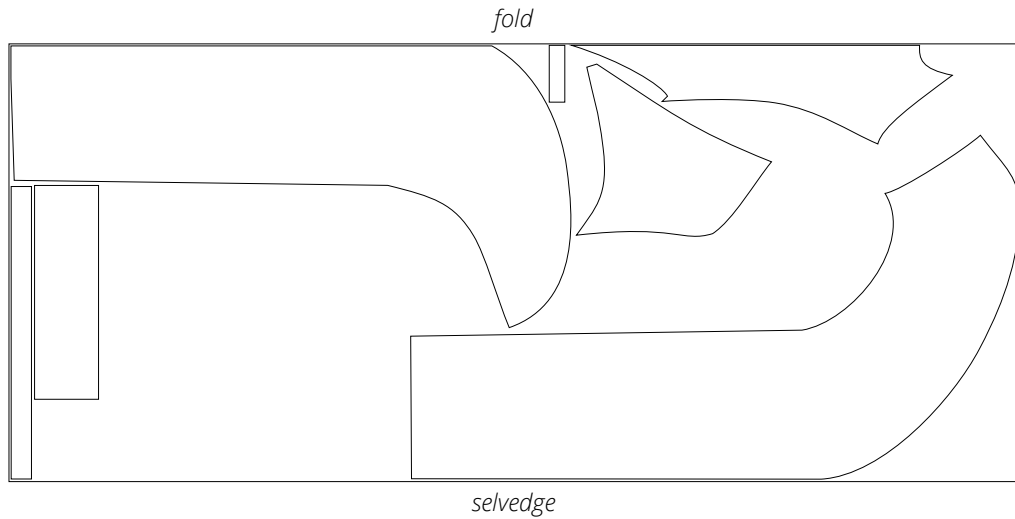
### Option 2 (all garment pieces cut from one fabric type)

Main fabric, 140 cm (55") wide, with a directional print/nap, cut on fold, for sizes 34–36 in all heights



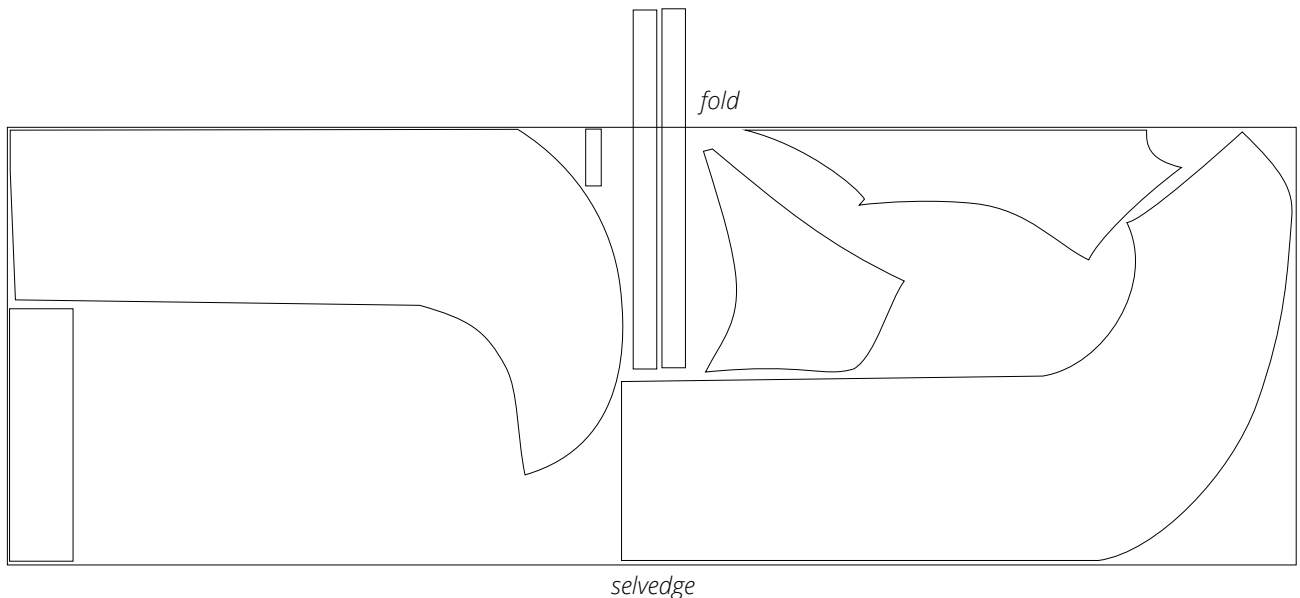
**Attention!** Cut one each of the stand collar and rouleau strap for button loops pieces.

Main fabric, 140 cm (55") wide, with a directional print/nap, cut on fold,  
for size 38 in all heights and size 40 in height 1



**Attention!** Cut one each of the stand collar and rouleau strap for button loops pieces.

Main fabric, 140 cm (55") wide, with a directional print/nap, cut on fold,  
for size 40 in heights 2–3 and sizes 42–52 in all heights



**Attention!** Cut one each of the stand collar and rouleau strap for button loops pieces. Cut the top edge binding pieces on a single layer out of the leftover fabric.

# READY? LET'S GET SEWING!



Place the top edge binding piece right sides together with the bodice. Align the edges and pin.



Stitch on the overlocker, with the binding piece facing up.  
Press the seam flat.



Press the seam allowances towards the binding.