

# FROM THE FOUNDER OF THE #VIKISEWS BRAND

---

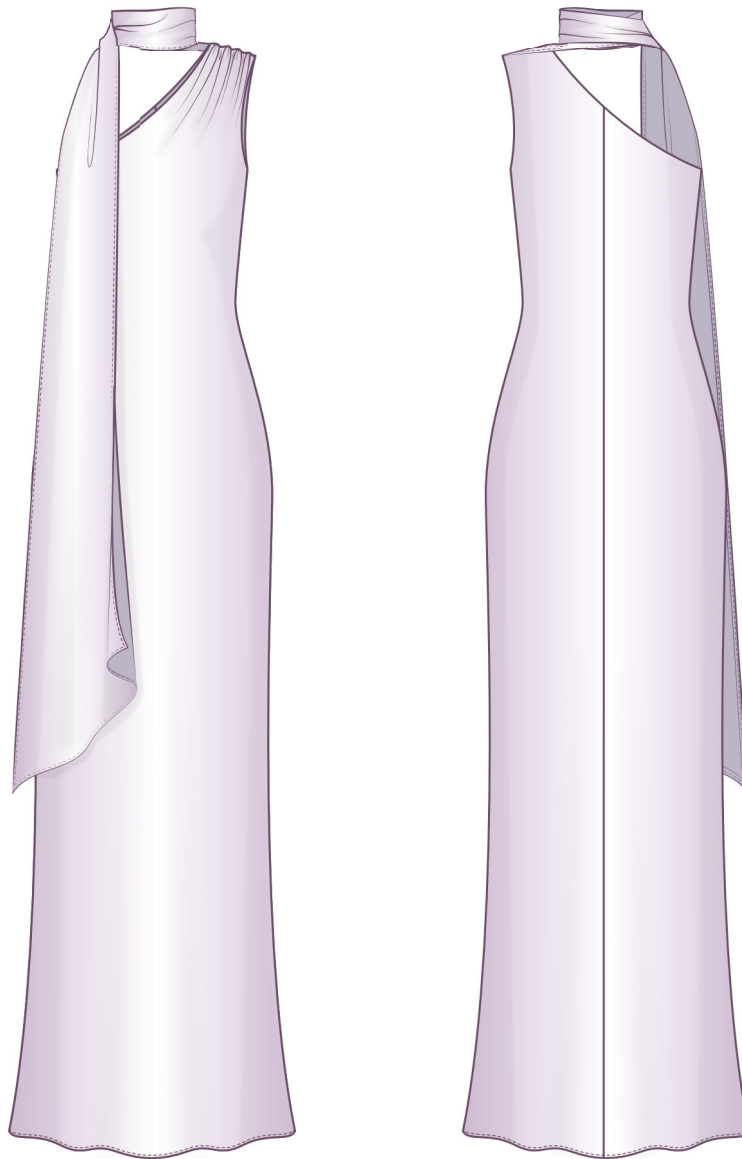


Back in 2016, when I was working on my first set of sewing instructions, I was trying to write them in such a way that even a complete beginner could easily understand and use them to create their very first garment. These instructions laid the foundation for the Vikisews brand, its vision and its mission. I wanted to create modern patterns with the utmost detailed and clear instructions.

Now, with each new collection we are constantly improving our instructions, amending them and adding more relevant details. By the time the final product reaches you, our drafters, correctors, and editors would have spent weeks perfecting every word and every photograph. If you compile a few of our instructions together, you will get a sewing manual that will assist you in sewing all kinds of garments at any difficulty level.

And I would be very happy if these instructions helped you to turn your hobby into a lifelong passion... Enjoy the process! Create your ultimate dream wardrobe! Wear your garments proudly for years to come!

If you have any questions, please contact us at [info@vikisews.com](mailto:info@vikisews.com) — we are always there to help.



## LYRIA PATTERN DESCRIPTION

---

Lyria is a close-fitting dress with a one-shoulder asymmetric neckline. The silhouette is achieved through a bias cut design and a center back seam. The shoulder seam is gathered on the front and has a long, bias-cut, single-layer scarf attached to it. Lyria is ankle-length.



## IMPORTANT!

---

The contents of this pattern are copyright protected and belong exclusively to Vikisews. You may use Vikisews patterns for personal use. It is prohibited to share Vikisews patterns and instructions with third parties, as well as to publish patterns and instructions online for public access. **Non-compliance with the mentioned rules is a violation of the US copyright law and may result in civil liability and criminal prosecution.**

You may use Vikisews patterns for commercial use, to sew custom-made garments and/or create fashion collections, on the condition that the patterns are solely used in a manufacturing setting and are not further shared with individuals.

## TOTAL EASE ALLOWANCE

	Bust ease	Waistline ease	Hipline ease
cm	1.2–4.1	9–12.6	6.7–10.3
inches	1/2–1 5/8	3 1/2–5	2 5/8–4

## GARMENT LENGTH

Height, cm	Back length from waist down, cm	Height, ft	Back length from waist down, in
1 (154–160)	92.1	1 (5'1"–5'3")	36 1/4
2 (162–168)	95.1	2 (5'4"–5'6")	37 1/2
3 (170–176)	98.1	3 (5'7"–5'9")	38 5/8
4 (178–184)	101.1	4 (5'10"–6'1")	39 3/4

## SUGGESTED FABRIC

To sew this dress, choose lightweight to medium-weight, soft, non-stretch or low-stretch, opaque or semi-sheer dress-weight fabrics made of natural fibers, artificial fibers, blends, or synthetics.

The following fabrics are recommended: satin, crepe de chine, natural or artificial silk.

Fabrics with a blended fiber content are preferable, as they are less prone to wrinkling, generally more resistant to wear and tear, and more durable.

**Attention!** We do not recommend stretchy knit fabrics.

The dress in the photo is made of natural silk. The fabric is medium weight, soft, non-stretch. The fiber content is 100% silk. The fabric weight is 130 g/m<sup>2</sup>.

# FABRIC AND NOTIONS REQUIREMENTS

1. Main fabric, 140 cm wide, with a directional print/nap, 115–150 g/m<sup>2</sup>, in meters:

Height, cm	Size									
	34	36	38	40	42	44	46	48	50	52
1 (154–160)	2.2	2.25	2.35	2.45	2.5	2.6	2.7	2.85	2.95	3.05
2 (162–168)	2.25	2.35	2.4	2.5	2.55	2.65	2.8	2.9	—	—
3 (170–176)	2.35	2.4	2.45	2.55	2.6	2.7	—	—	—	—
4 (178–184)	2.4	2.45	2.55	2.6	2.7	—	—	—	—	—

Main fabric, 55" wide, with a directional print/nap, 115–150 g/m<sup>2</sup>, in yards:

Height, ft	Size									
	34	36	38	40	42	44	46	48	50	52
1 (5'1"–5'3")	2 3/8	2 1/2	2 5/8	2 5/8	2 3/4	2 7/8	3	3 1/8	3 1/4	3 3/8
2 (5'4"–5'6")	2 1/2	2 5/8	2 5/8	2 3/4	2 3/4	2 7/8	3	3 1/8	—	—
3 (5'7"–5'9")	2 5/8	2 5/8	2 5/8	2 3/4	2 7/8	3	—	—	—	—
4 (5'10"–6'1")	2 5/8	2 5/8	2 3/4	2 7/8	3	—	—	—	—	—

**IMPORTANT!** When purchasing fabric, please account for shrinkage and buy 5% more than required.

Main fabric, 150 cm wide, with a directional print/nap, 115–150 g/m<sup>2</sup>, in meters:

Height, cm	Size									
	34	36	38	40	42	42	46	48	50	52
1 (154–160)	2.05	2.15	2.2	2.3	2.4	2.45	2.55	2.65	2.75	2.85
2 (162–168)	2.15	2.2	2.25	2.35	2.45	2.5	2.6	2.7	2.8	2.9
3 (170–176)	2.2	2.25	2.35	2.4	2.5	2.6	2.65	2.75	2.85	2.95
4 (178–184)	2.25	2.35	2.4	2.45	2.55	2.6	2.7	2.85	2.9	3.05

Main fabric, 59" wide, with a directional print/nap, 115–150 g/m<sup>2</sup>, in yards:

Height, ft	Size									
	34	36	38	40	42	44	46	48	50	52
1 (5'1"–5'3")	2 1/4	2 3/8	2 3/8	2 1/2	2 5/8	2 5/8	2 3/4	2 7/8	3	3 1/8
2 (5'4"–5'6")	2 3/8	2 3/8	2 1/2	2 5/8	2 5/8	2 3/4	2 7/8	3	3	3 1/8
3 (5'7"–5'9")	2 3/8	2 1/2	2 5/8	2 5/8	2 3/4	2 7/8	2 7/8	3	3 1/8	3 1/4
4 (5'10"–6'1")	2 1/2	2 5/8	2 5/8	2 5/8	2 3/4	2 7/8	3	3 1/8	3 1/8	3 3/8

***IMPORTANT!** When purchasing fabric, please account for shrinkage and buy 5% more than required.*

2. Matching thread — 5 spools (1 spool for the sewing machine + 4 spools for the overlocker)

## TOOLS AND EQUIPMENT

---

- sewing machine for construction
- stitch-in-the-ditch foot for the sewing machine (optional)
- overlocker for finishing raw edges. This may be replaced with a stretch overlock stitch or a zigzag stitch on a regular sewing machine (overlock or zigzag stitch width 2–3 mm, stitch length 2.5 mm)

## PATTERN PIECES LIST

---

From main fabric:

- front — cut 1
- right back — cut 1
- left back — cut 1
- front lining — cut 1
- right back lining — cut 1
- left back lining — cut 1
- scarf — cut 1

***IMPORTANT!** Don't forget to transfer all pattern markings and notches onto the fabric.*

## SEAM ALLOWANCES

---

All pattern pieces include 1 cm (3/8") seam allowances.

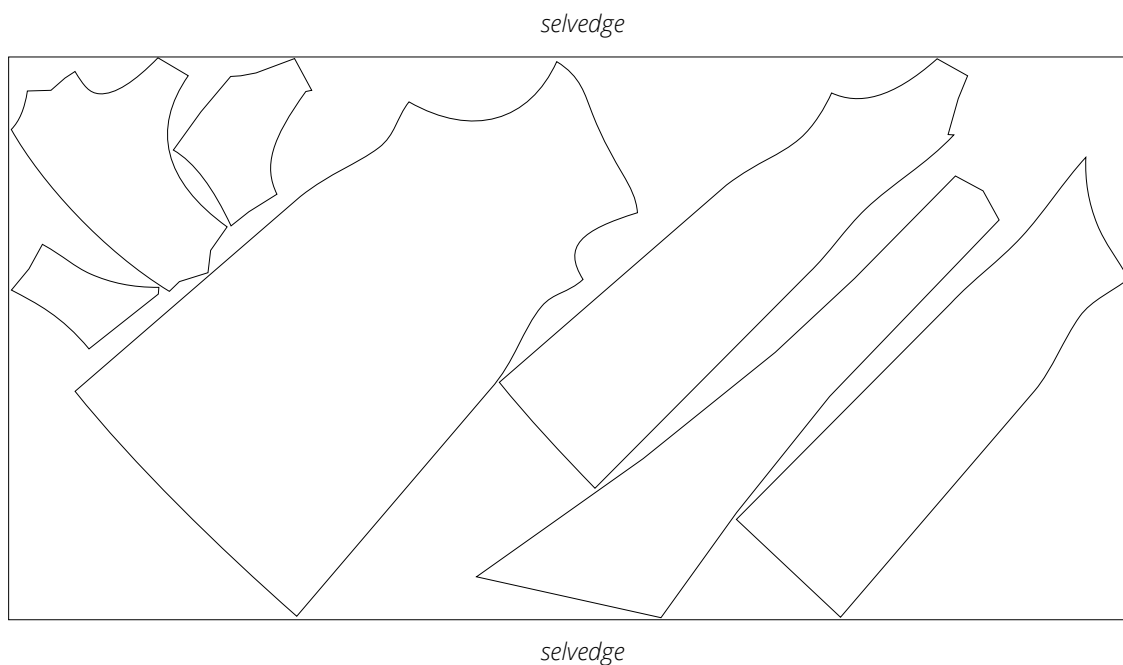
Take this into account when laying out pattern pieces on the fabric.

# CUTTING LAYOUT

---

Main fabric, 140 cm (55") wide, with a directional print/nap, cut on a single layer, for all sizes in height 1; sizes 34–48 in height 2; sizes 34–44 in height 3; sizes 34–42 in height 4.

Main fabric, 150 cm (59") wide, cut on a single layer, for all sizes in all heights

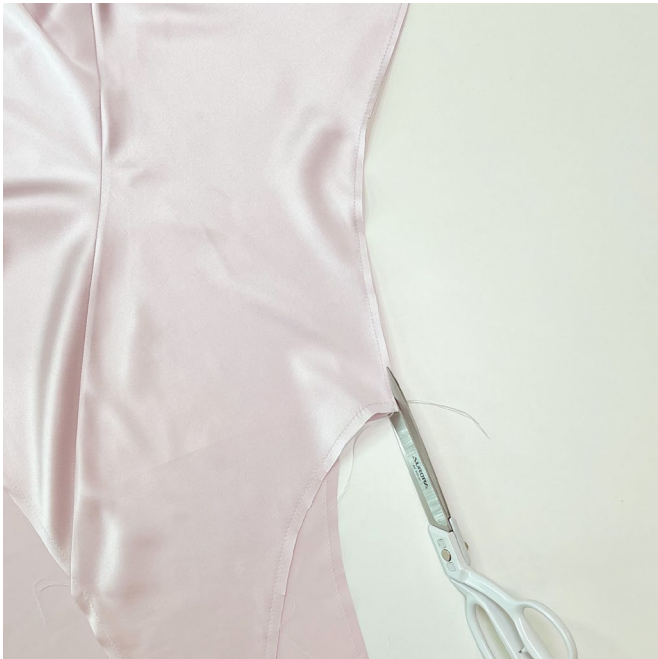


**READY? LET'S GET SEWING!**

---



Place the assembled back wrong sides together with the front piece. Align the side edges, match the notches, and pin. Machine-stitch at 5 mm (just under 1/4") from the edge. Backstitch at the beginning and end of the seam.



Trim the side seam allowances down to 3-4 mm (1/8").



Press the side seam allowances to one side.