

FROM THE FOUNDER OF THE #VIKISEWS BRAND



Back in 2016, when I was working on my first set of sewing instructions, I was trying to write them in such a way that even a complete beginner could easily understand and use them to create their very first garment. These instructions laid the foundation for the Vikisews brand, its vision and its mission. I wanted to create modern patterns with the utmost detailed and clear instructions.

Now, with each new collection we are constantly improving our instructions, amending them and adding more relevant details. By the time the final product reaches you, our drafters, correctors, and editors would have spent weeks perfecting every word and every photograph. If you compile a few of our instructions together, you will get a sewing manual that will assist you in sewing all kinds of garments at any difficulty level.

And I would be very happy if these instructions helped you to turn your hobby into a lifelong passion... Enjoy the process! Create your ultimate dream wardrobe! Wear your garments proudly for years to come!

If you have any questions, please contact us at info@vikisews.com — we are always there to help.



VIOLAINE PATTERN DESCRIPTION

Violaïne is a loose-fitting trapeze dress with pockets in the side seams. The top edge is finished with invisible wide elastic. The dress is ankle-length.



IMPORTANT!

The contents of this pattern are copyright protected and belong exclusively to Vikisews. You may use Vikisews patterns for personal use. It is prohibited to share Vikisews patterns and instructions with third parties, as well as to publish patterns and instructions online for public access. **Non-compliance with the mentioned rules is a violation of the US copyright law and may result in civil liability and criminal prosecution.**

You may use Vikisews patterns for commercial use, to sew custom-made garments and/or create fashion collections, on the condition that the patterns are solely used in a manufacturing setting and are not further shared with individuals.

TOTAL EASE ALLOWANCE

	Bust ease (estimated)	Waistline ease	Hipline ease
cm	0.5 – (-0.8)	36.7–42	32.4–44.9
inches	1/4 – (-3/8)	14 1/2–16 1/2	12 3/4–17 5/8

GARMENT LENGTH

Height, cm	Center back length, cm	Height, ft	Center back length, in
1 (154–160)	120	1 (5'1"–5'3")	47 1/4
2 (162–168)	123.6	2 (5'4"–5'6")	48 5/8
3 (170–176)	127.3	3 (5'7"–5'9")	50 1/8
4 (178–184)	130.9	4 (5'10"–6'1")	51 1/2

SUGGESTED FABRIC

To sew this dress, choose dress-weight fabrics with the following properties: medium weight, pliable, soft, non-stretch or low-stretch, opaque. The fiber content can include natural fibers, artificial fibers, blends, or synthetics.

The following fabrics are recommended: satin, sateen, natural or artificial silk.

The dress in the photo is made of satin. The fabric is medium weight, pliable, soft, with a little stretch. The fiber content is 100% polyester. The fabric weight is 240 g/m².

FABRIC AND NOTIONS REQUIREMENTS

1. Main fabric, 140 cm wide, with a directional print/nap, in meters:

Height, cm	Size	
	34-40	42-52
1 (154-160)	2.55	2.6
2 (162-168)	2.65	2.65
3 (170-176)	2.7	2.7
4 (178-184)	2.8	2.8

Main fabric, 55" wide, with a directional print/nap, in yards:

Height, ft	Size	
	34-40	42-52
1 (5'1"-5'3")	2 3/4	2 7/8
2 (5'4"-5'6")	2 7/8	2 7/8
3 (5'7"-5'9")	3	3
4 (5'10"-6'1")	3	3

IMPORTANT! When purchasing fabric, please account for shrinkage and buy 5% more than required.

- 2. Lightweight interfacing, knit or woven, 140 cm (55") wide, for all sizes in all heights — 0.3 m (3/8 yd)
- 3. Stitched straight-grain fusible stay tape, 1 cm (3/8") wide — 0.4 m (3/8 yd)
- 4. Elastic, 4 cm (1 5/8") wide. The exact elastic length depends on the size and is specified on the pattern:

Size	34	36	38	40	42	44	46	48	50	52
Length, cm	69	71	74	77	80	82	85	87	90	92
Length, in	27 1/8	28	29 1/8	30 3/8	31 1/2	32 1/4	33 1/2	34 1/4	35 3/8	36 1/4

- 5. Matching thread — 4 spools (1 spool for the sewing machine + 3 spools for the overlocker)

TOOLS AND EQUIPMENT

- sewing machine for construction
- overlocker for construction and finishing raw edges This may be replaced with a stretch overlock stitch or a zigzag stitch on the sewing machine (overlock or zigzag stitch width 2-3 mm, stitch length 2.5 mm)

PATTERN PIECES LIST

1. From main fabric:

- front — cut 1 on fold
- back — cut 1 on fold
- pocket top lining — cut 2
- pocket bottom lining — cut 2
- pocket facing reinforcement — cut 2

IMPORTANT! Don't forget to transfer all pattern markings and notches onto the fabric.

2. From interfacing:

- pocket facing reinforcement — cut 2

3. Templates:

- elastic template — cut 1

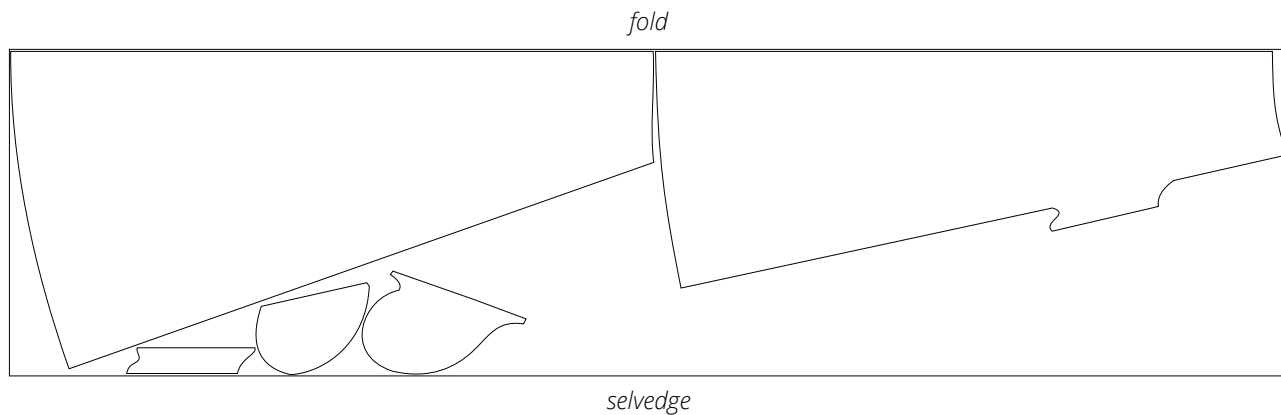
SEAM ALLOWANCES

All pattern pieces include 1 cm (3/8") seam allowances.

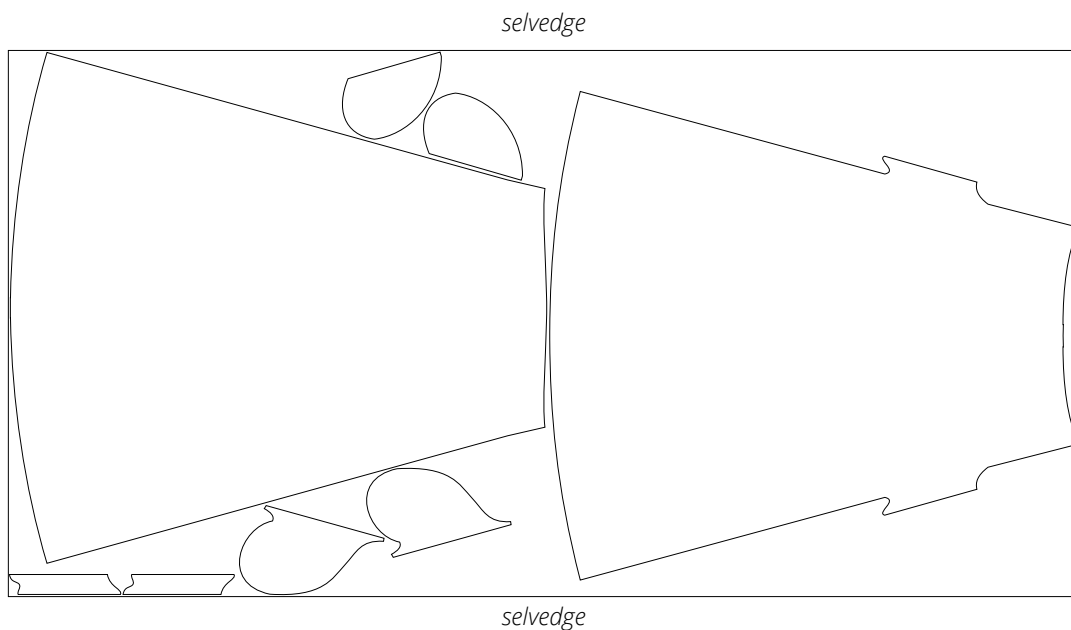
Take this into account when laying out pattern pieces on the fabric.

CUTTING LAYOUT

Main fabric, 140 cm (55") wide, with a directional print/nap,
cut on fold, for sizes 34–40 in all heights



Main fabric, 140 cm (55") wide, with a directional print/nap,
cut on a single layer, for sizes 42-52 in all heights



Interfacing, 140 cm (55") wide, cut on a partial fold in one direction,
for all sizes in all heights



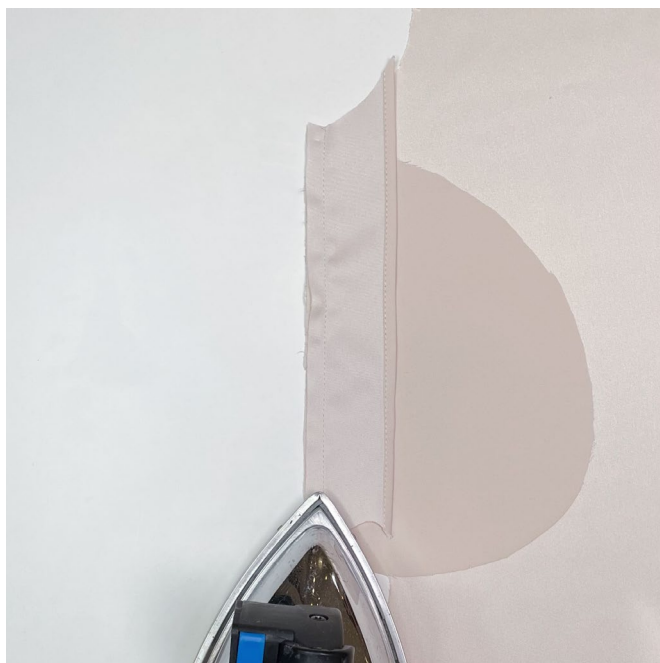
READY? LET'S GET SEWING!



Press the seam.



Place the pocket facing reinforcement piece to the back piece right sides together. Align the pocket opening edges, matching the notches. Place the pocket top lining piece between the back and pocket facing reinforcement pieces. The right side of the pocket top lining should be facing the right side of the back. Pin.



Stitch on the sewing machine. Backstitch at the beginning and end of the seam.
Press the seam flat.