

FROM THE FOUNDER OF THE #VIKISEWS BRAND

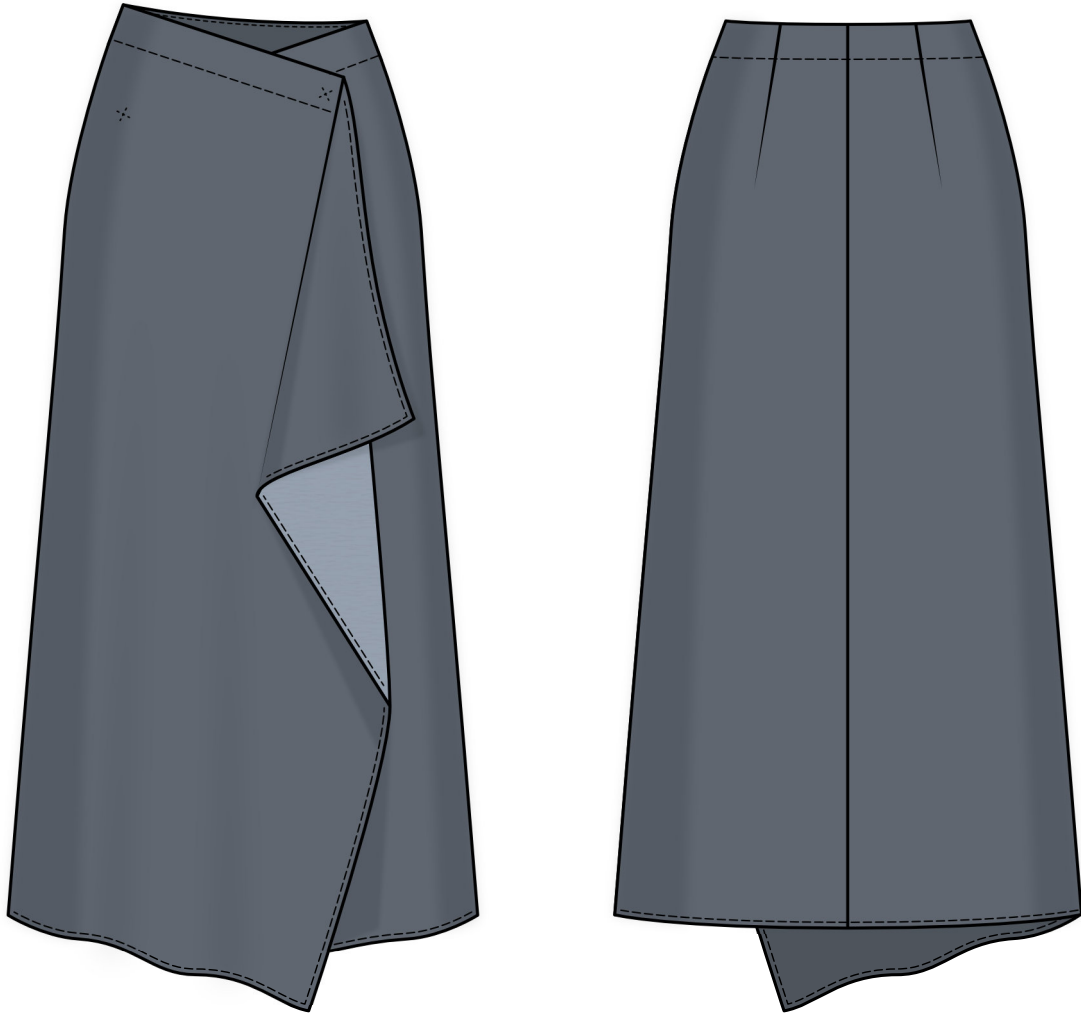


Back in 2016, when I was working on my first set of sewing instructions, I was trying to write them in such a way that even a complete beginner could easily understand and use them to create their very first garment. These instructions laid the foundation for the Vikisews brand, its vision and its mission. I wanted to create modern patterns with the utmost detailed and clear instructions.

Now, with each new collection we are constantly improving our instructions, amending them and adding more relevant details. By the time the final product reaches you, our drafters, correctors, and editors would have spent weeks perfecting every word and every photograph. If you compile a few of our instructions together, you will get a sewing manual that will assist you in sewing all kinds of garments at any difficulty level.

And I would be very happy if these instructions helped you to turn your hobby into a lifelong passion... Enjoy the process! Create your ultimate dream wardrobe! Wear your garments proudly for years to come!

If you have any questions, please contact us at info@vikisews.com — we are always there to help.



SIBEL PATTERN DESCRIPTION

Sibel is a semi-fitted wrap skirt with a straight silhouette. The top edge is finished with a facing. The skirt has an asymmetrical closure with two snaps. Sibel is below-knee length.



IMPORTANT!

The contents of this pattern are copyright protected and belong exclusively to Vikisews. You may use Vikisews patterns for personal use. It is prohibited to share Vikisews patterns and instructions with third parties, as well as to publish patterns and instructions online for public access. **Non-compliance with the mentioned rules is a violation of the US copyright law and may result in civil liability and criminal prosecution.**

You may use Vikisews patterns for commercial use, to sew custom-made garments and/or create fashion collections, on the condition that the patterns are solely used in a manufacturing setting and are not further shared with individuals.

TOTAL EASE ALLOWANCE

	Waistline ease (estimated)	Hipline ease (estimated)
cm	5–5.2	0.1–0.4
inches	2	0– $\frac{1}{8}$

GARMENT LENGTH

Height, cm	Garment length, cm	Height, ft	Garment length, in
1 (154–160)	77	1 (5'1"–5'3")	30 $\frac{3}{8}$
2 (162–168)	80	2 (5'4"–5'6")	31 $\frac{1}{2}$
3 (170–176)	83	3 (5'7"–5'9")	32 $\frac{5}{8}$
4 (178–184)	86	4 (5'10"–6'1")	33 $\frac{7}{8}$

SUGGESTED FABRIC

To sew this skirt, choose medium-weight, non-stretch or low-stretch suiting and dress-weight fabrics made of natural, artificial, blended, or synthetic fibers.

The following fabrics are recommended: twill, gabardine, suiting.

Attention! We do not recommend stretchy knit fabrics.

The skirt in the photo is made of double-sided wool suiting. The fabric is medium weight, soft, and low-stretch. The fiber content is 100% wool. The fabric weight is 200 g/m².

FABRIC AND NOTIONS REQUIREMENTS

1. Main fabric, 140 cm wide, with a directional print/nap, in meters:

Height, cm	Size				
	34	36-42	44-46	48	50-52
1 (154-160)	0.9	1.65	1.7	1.75	1.8
2 (162-168)	0.95	1.7	1.75	1.8	1.85
3 (170-176)	0.95	1.75	1.8	1.85	1.9
4 (178-184)	1	1.8	1.85	1.9	1.95

Main fabric, 55" wide, with a directional print/nap, in yards:

Height, ft	Size				
	34	36-42	44-46	48	50-52
1 (5'1"-5'3")	1	1 $\frac{3}{4}$	1 $\frac{7}{8}$	1 $\frac{7}{8}$	2
2 (5'4"-5'6")	1	1 $\frac{7}{8}$	1 $\frac{7}{8}$	2	2
3 (5'7"-5'9")	1	1 $\frac{7}{8}$	2	2	2 $\frac{1}{8}$
4 (5'10"-6'1")	1 $\frac{1}{8}$	2	2	2 $\frac{1}{8}$	2 $\frac{1}{8}$

IMPORTANT! When purchasing fabric, please account for shrinkage and buy 5% more than required.

2. Lightweight interfacing, knit or woven, 140 cm (55") wide, for all sizes in all heights — 15 cm (6")
3. Stitched bias-cut fusible stay tape with stitch reinforcement, 1-1.5 cm (3/8-5/8") wide — 1.5 m (1 5/8 yd)
4. Two plastic snaps, 1.2-1.5 cm (1/2-5/8") in diameter
5. Matching thread — 5 spools (1 spool for the sewing machine + 4 spools for the overlocker)

TOOLS AND EQUIPMENT

- sewing machine for construction
- overlocker for finishing raw edges This may be replaced with a stretch overlock stitch or a zigzag stitch on the sewing machine (overlock or zigzag stitch width 2–3 mm, stitch length 2.5 mm)
- stitch-in-the-ditch foot for the sewing machine (optional)

PATTERN PIECES LIST

1. From main fabric:

- right skirt — cut 1
- left skirt — cut 1
- right skirt facing — cut 1
- left skirt facing — cut 1

2. From interfacing:

- right skirt facing — cut 1
- left skirt facing — cut 1

***IMPORTANT!** Don't forget to transfer all pattern markings and notches onto the fabric.*

***IMPORTANT!** The pattern pieces that have the "face" inscription on them should be placed with the blank side onto the right side of fabric when cutting.*

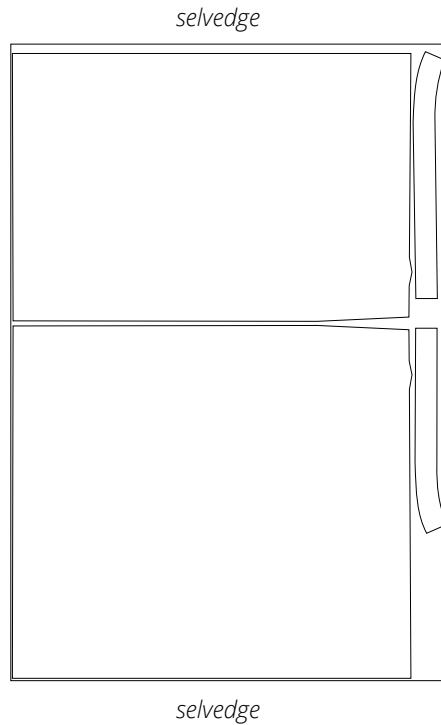
SEAM ALLOWANCES

All pattern pieces include 1 cm (3/8") seam allowances.

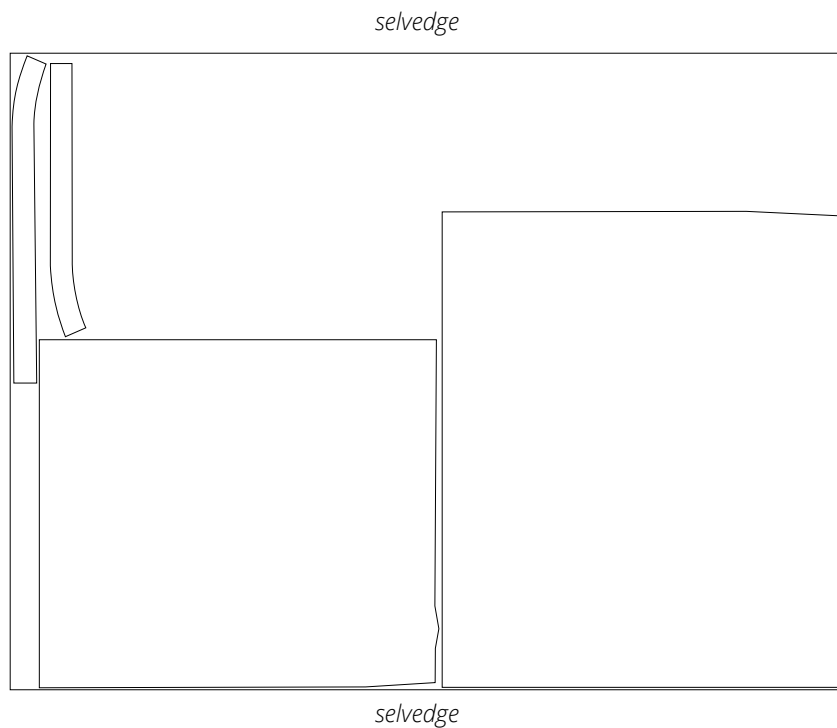
Take this into account when laying out the pattern pieces on the fabric.

CUTTING LAYOUT

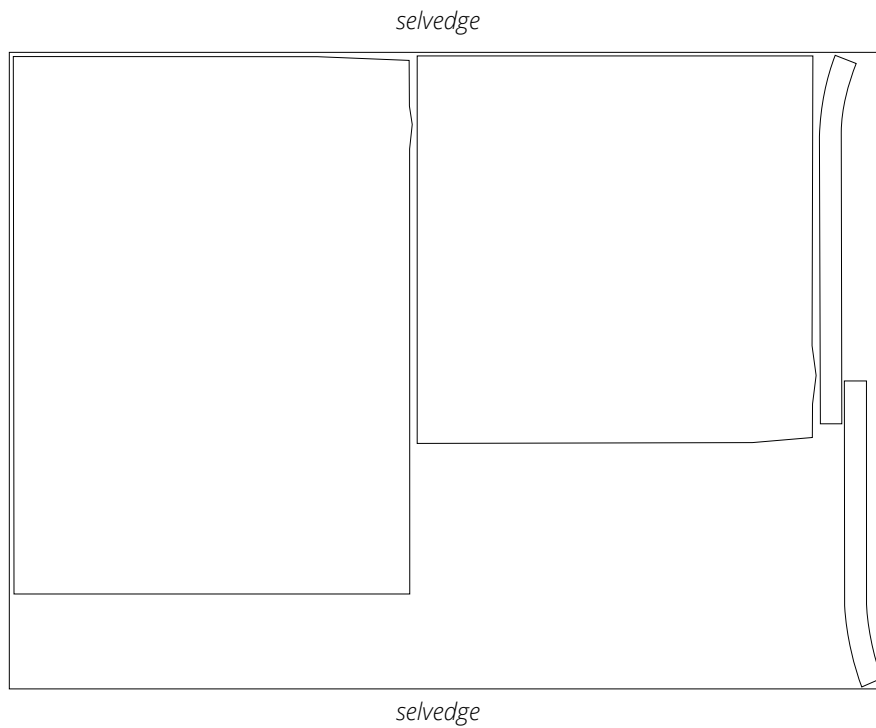
Main fabric, 140 cm (55") wide, with a directional print/nap,
cut on a single layer, for size 34 in all heights



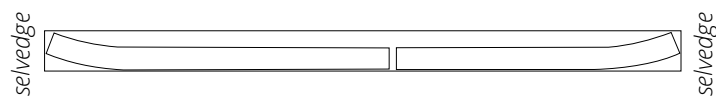
Main fabric, 140 cm (55") wide, with a directional print/nap,
cut on a single layer, for sizes 36–46 in all heights



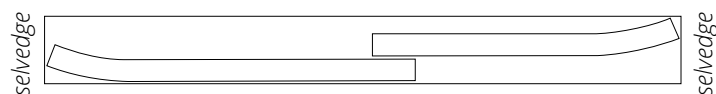
Main fabric, 140 cm (55") wide, with a directional print/nap,
cut on a single layer, for sizes 48–52 in all heights



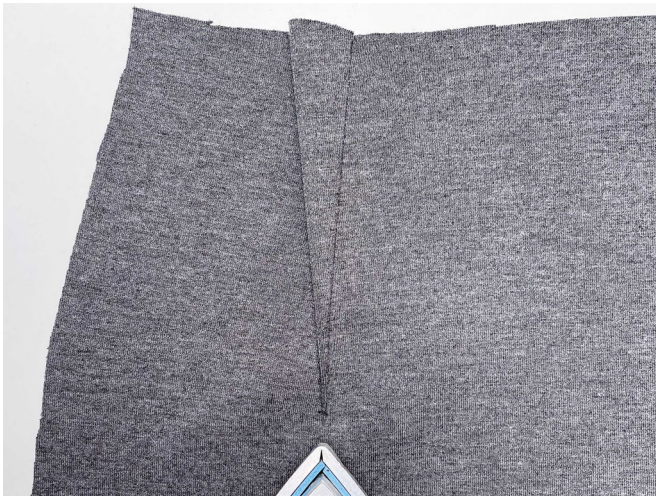
Interfacing, 140 cm (55") wide, cut on a single layer,
for sizes 34–48 in all heights



Interfacing, 140 cm (55") wide, cut on a single layer,
for sizes 50–52 in all heights



READY? LET'S GET SEWING!



Press the darts towards the center back edges.



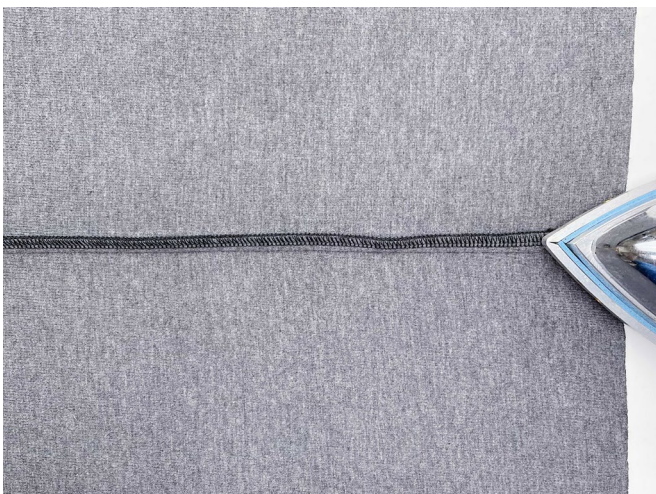
Place the left and right skirt pieces right sides together. Align the center back edges, match the notches, and pin.



Machine-stitch, backstitching at the beginning and end.

Overlock the center back seam allowances, with the right skirt piece facing up. Use a latch hook or a needle to hide the thread tails inside the seam allowances.

Press the seam flat.



Press the seam allowances towards the left skirt piece.