

FROM THE FOUNDER OF THE #VIKISEWS BRAND



Back in 2016, when I was working on my first set of sewing instructions, I was trying to write them in such a way that even a complete beginner could easily understand and use them to create their very first garment. These instructions laid the foundation for the Vikisews brand, its vision and its mission. I wanted to create modern patterns with the utmost detailed and clear instructions.

Now, with each new collection we are constantly improving our instructions, amending them and adding more relevant details. By the time the final product reaches you, our drafters, correctors, and editors would have spent weeks perfecting every word and every photograph. If you compile a few of our instructions together, you will get a sewing manual that will assist you in sewing all kinds of garments at any difficulty level.

And I would be very happy if these instructions helped you to turn your hobby into a lifelong passion... Enjoy the process! Create your ultimate dream wardrobe! Wear your garments proudly for years to come!

If you have any questions, please contact us at info@vikisews.com — we are always there to help.



DOLORES PATTERN DESCRIPTION

Dolores is a straight-cut, semi-fitted, fully lined trench coat that slightly flares toward the bottom. The bust darts have been transferred to the neckline. The trench coat has welt pockets at the front, a center seam and vent at the back, and an extended shoulder line. The long, semi-fitted two-piece set-in sleeves have detachable sleeve tabs at the bottom. The shoulder seams feature epaulets. The sleeve tabs and epaulets are secured with loops and fasten with a single button each. The trench coat has a classic turn-down collar with a collar stand. There are belt loops at the side seams. The buckle belt is detachable. Dolores has a center front closure with buttons and buttonholes and is above-ankle length.



IMPORTANT!

The contents of this pattern are copyright protected and belong exclusively to Vikisews. You may use Vikisews patterns for personal use. It is prohibited to share Vikisews patterns and instructions with third parties, as well as to publish patterns and instructions online for public access. **Non-compliance with the mentioned rules is a violation of the US copyright law and may result in civil liability and criminal prosecution.**

You may use Vikisews patterns for commercial use, to sew custom-made garments and/or create fashion collections, on the condition that the patterns are solely used in a manufacturing setting and are not further shared with individuals.

TOTAL EASE ALLOWANCE

	Bust ease	Waistline ease	Hipline ease	Upper arm ease
cm	41–41.1	63.6–63.7	42.6–42.7	13.5–13
inches	16 1/8	25–25 1/8	16 3/4	5 3/8–5 1/8

GARMENT LENGTH, SLEEVE LENGTH

Height, cm	Garment length at center back, cm	Sleeve length including shoulder width, cm
1 (154–160)	123.4–124.6	75.9–76
2 (162–168)	126.8–128.5	77.8–78.1
3 (170–176)	130.8–132.6	79.8–80.1
4 (178–184)	134.8–136.6	81.8–82.1

Height, ft	Garment length at center back, in	Sleeve length including shoulder width, in
1 (5'1"–5'3")	48 5/8–49	29 7/8
2 (5'4"–5'6")	49 7/8–50 5/8	30 5/8–30 3/4
3 (5'7"–5'9")	51 1/2–52 1/4	31 3/8–31 1/2
4 (5'10"–6'1")	53 1/8–53 3/4	32 1/4–32 3/8

SUGGESTED FABRIC

To sew this trench coat, choose suiting fabrics with the following properties:

- medium-weight, structured, non-stretch or low-stretch
- the fiber content can include natural fibers (cotton), artificial fibers (viscose), blends (cotton + polyester, etc.), and synthetics (polyester)
- the following fabrics are recommended: cotton gabardine, denim, faux leather.

Attention! We do not recommend soft, lightweight (outerwear) fabrics.

For the lining, choose lining fabrics made of artificial fibers (viscose), blends (viscose + elastane, viscose + polyester, etc.), and synthetics (polyester, polyester + elastane).

The trench coat in the photo is made of gabardine. This fabric is medium-weight, structured, and low-stretch.

The fiber composition is a blend of cotton (60%) and polyester (40%). The fabric weight is 240 g/m².

The lining is 100% viscose. The fabric weight is 100 m/g². The interfacing weight is 50 g/m².

FABRIC AND NOTIONS REQUIREMENTS

1. Main fabric, 140 cm wide, with a directional print/nap, in meters:

Height, cm	Size						
	34	36	38-40	42-46	48	50	52
1 (154-160)	3.1	3.15	3.25	3.3	3.55	3.55	3.55
2 (162-168)	3.2	3.2	3.35	3.4	3.6	3.65	3.65
3 (170-176)	3.3	3.3	3.45	3.5	3.75	3.75	3.8
4 (178-184)	3.35	3.45	3.55	3.6	3.8	3.85	3.85

Main fabric, 55" wide, with a directional print/nap, in yards:

Height, ft	Size					
	34	36	38-40	42-46	48	50-52
1 (5'1"-5'3")	3 3/8	3 1/2	3 1/2	3 5/8	3 7/8	3 7/8
2 (5'4"-5'6")	3 1/2	3 1/2	3 5/8	3 3/4	3 7/8	4
3 (5'7"-5'9")	3 5/8	3 5/8	3 3/4	3 7/8	4 1/8	4 1/8
4 (5'10"-6'1")	3 5/8	3 3/4	3 7/8	3 7/8	4 1/8	4 1/4

Main fabric, 150 cm wide, with a directional print/nap, in meters:

Height, cm	Size							
	34	36	38-40	42	44	46-48	50	52
1 (154-160)	3.05	3.1	3.1	3.1	3.2	3.2	3.4	3.45
2 (162-168)	3.15	3.15	3.2	3.2	3.25	3.3	3.5	3.5
3 (170-176)	3.25	3.25	3.3	3.3	3.3	3.3	3.55	3.6
4 (178-184)	3.35	3.35	3.35	3.4	3.4	3.45	3.65	3.7

Main fabric, 59" wide, with a directional print/nap, in yards:

Height, ft	Size					
	34-36	38-40	42	44	46-48	50-52
1 (5'1"-5'3")	3 3/8	3 3/8	3 3/8	3 1/2	3 1/2	3 3/4
2 (5'4"-5'6")	3 1/2	3 1/2	3 1/2	3 1/2	3 5/8	3 7/8
3 (5'7"-5'9")	3 1/2	3 5/8	3 5/8	3 5/8	3 5/8	3 7/8
4 (5'10"-6'1")	3 5/8	3 5/8	3 3/4	3 3/4	3 3/4	4

2. Lining fabric, 140 cm wide, with a directional print/nap, in meters:

Height, cm	Size								
	34	36	38	40-42	44	46	48	50	52
1 (154-160)	2.35	2.4	2.55	2.6	2.65	2.8	2.95	3.05	3.1
2 (162-168)	2.45	2.45	2.65	2.65	2.75	2.9	3.15	3.15	3.15
3 (170-176)	2.55	2.55	2.7	2.75	2.8	3	3.15	3.25	3.25
4 (178-184)	2.6	2.6	2.8	2.8	2.95	3.1	3.3	3.35	3.35

Lining fabric, 55" wide, with a directional print/nap, in yards:

Height, ft	Size						
	34-36	38	40-42	44	46	48	50-52
1 (5'1"-5'3")	2 5/8	2 3/4	2 7/8	2 7/8	3	3 1/4	3 3/8
2 (5'4"-5'6")	2 5/8	2 7/8	2 7/8	3	3 1/8	3 1/2	3 1/2
3 (5'7"-5'9")	2 3/4	3	3	3	3 1/4	3 1/2	3 1/2
4 (5'10"-6'1")	2 7/8	3	3	3 1/4	3 3/8	3 5/8	3 5/8

IMPORTANT! When purchasing fabric, please account for shrinkage and buy 5% more than required.

3. Lightweight knit or woven interfacing, 140 cm (55") wide, for all heights:

Size	34	36	38	40	42	44	46-48	50	52
meters	1.5	1.55	1.6	1.65	1.7	1.75	1.8	1.85	1.9
yards	1 5/8	1 3/4	1 3/4	1 3/4	1 7/8	1 7/8	2	2	2 1/8

4. Stitched bias-cut fusible stay tape for all sizes and heights — 2.7 m (3 yd).

5. Stitched straight-grain fusible stay tape for all sizes and heights — 0.7 m (3/4 yd).

6. Eleven buttons, 2.2 cm (7/8") in diameter.

7. One 5 cm (2") wide buckle for the belt.

8. All-purpose matching thread — 1 spool.

9. Matching topstitching thread (for example, Madeira No. 35) — 2 spools.

TOOLS AND EQUIPMENT

- sewing machine for construction
- buttonhole foot for the sewing machine
- one-sided foot for the sewing machine
- stitch-in-the-ditch foot for the sewing machine (optional).

PATTERN PIECES LIST

1. From main fabric:

- front — cut 2
- back — cut 2
- top sleeve — cut 2
- bottom sleeve — cut 2
- front facing — cut 2
- upper collar — cut 1 on fold
- undercollar — cut 1 on fold
- collar stand — cut 2
- back neck facing — cut 1 on fold
- belt — cut 1
- pocket facing — cut 2
- welt — cut 2
- sleeve tab — cut 4
- epaulet — cut 4
- loop — cut 1
- belt loop — cut 1.

2. From lining fabric:

- front lining — cut 2
- back lining — cut 2
- top sleeve lining — cut 2
- bottom sleeve lining — cut 2
- pocket top lining — cut 2
- pocket bottom lining — cut 2.

3. From interfacing:

- upper collar — cut 1 on fold
- undercollar — cut 1 on fold
- collar stand — cut 2
- back neck facing — cut 1 on fold
- front facing — cut 2
- belt — cut 1
- pocket facing — cut 2
- welt — cut 2
- epaulet — cut 4
- sleeve tab — cut 4.

Partially interface the following pieces:

- seam allowances on the front — 2 pieces
- seam allowances on the back — 2 pieces
- hem allowance on the top sleeve — 2 pieces
- hem allowance on the bottom sleeve — 2 pieces.

The strips of interfacing should be cut on the cross grain (perpendicular to the selvedge).

- vent seam allowances on the left back piece. The grainline direction is the same as on the main pattern piece.

Additionally, cut two strips of interfacing to interface the pocket area. The exact size of the strips is marked on the front pattern piece. The strips should be cut on the straight grain.

IMPORTANT! Don't forget to transfer all pattern markings and notches onto the fabric.

SEAM ALLOWANCES

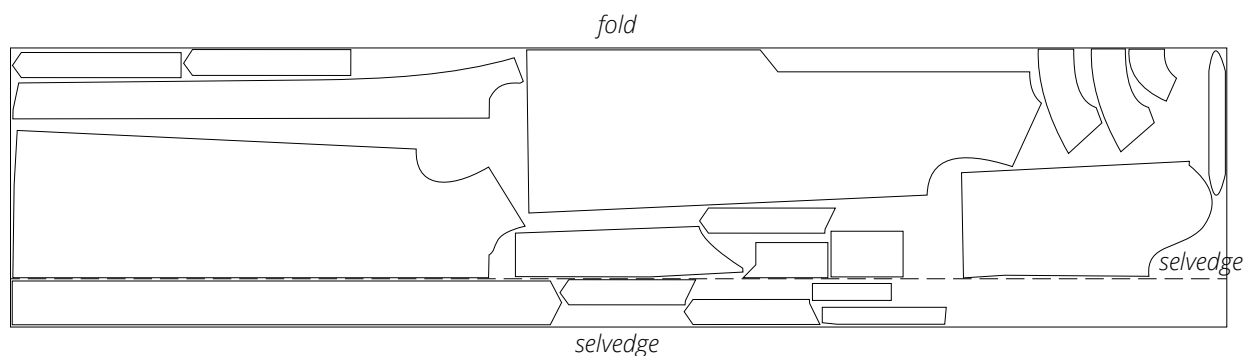
All pattern pieces include seam allowances as follows:

- garment hem allowance — 4 cm (1 5/8")
- sleeve hem allowance — 4 cm (1 5/8")
- pocket bag seam allowance — 1.5 cm (5/8")
- all other edges — 1 cm (3/8").

Take this into account when laying out pattern pieces on the fabric.

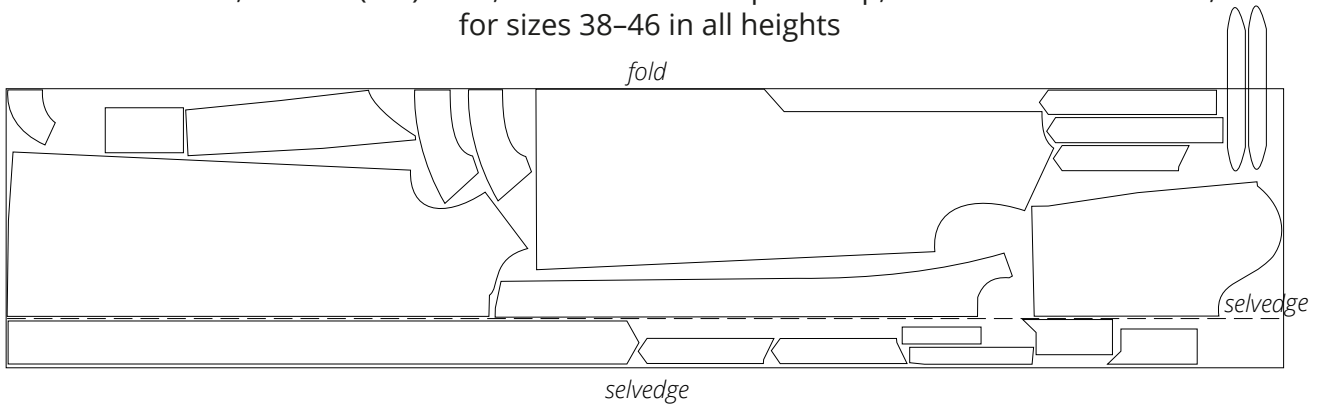
CUTTING LAYOUT

Main fabric, 140 cm (55") wide, with a directional print/nap, cut with one offset fold, for sizes 34–36 in all heights; main fabric, 150 cm (59") wide, with a directional print/nap, cut with one offset fold, for sizes 34–46 in all heights



Attention! The fold is offset to accommodate the belt, epaulet, loop, and belt loop pieces. Cut only one of the following pieces: belt, loop, and belt loop. The remainder of the pattern pieces should be cut in pairs.

Main fabric, 140 cm (55") wide, with a directional print/nap, cut with one offset fold, for sizes 38–46 in all heights

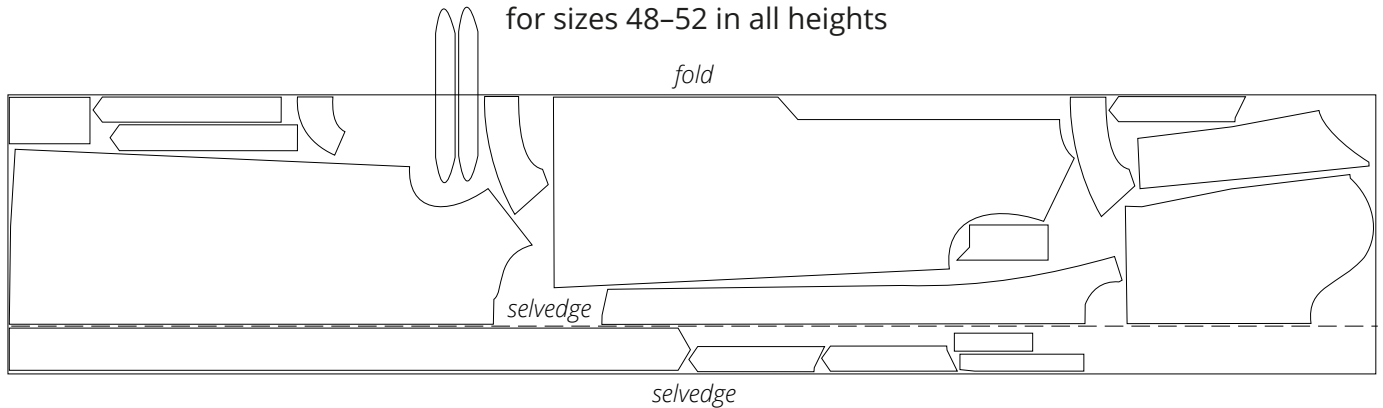


Attention! Cut the collar stand pieces on a single layer out of leftover fabric.

Attention! The fold is offset to accommodate the belt, epaulet, pocket facing, loop, and belt loop pieces. Cut only one of the following pieces: belt, loop, and belt loop.

The remainder of the pattern pieces should be cut in pairs.

Main fabric, 140 cm (55") wide, with a directional print/nap, cut with one offset fold, for sizes 48–52 in all heights

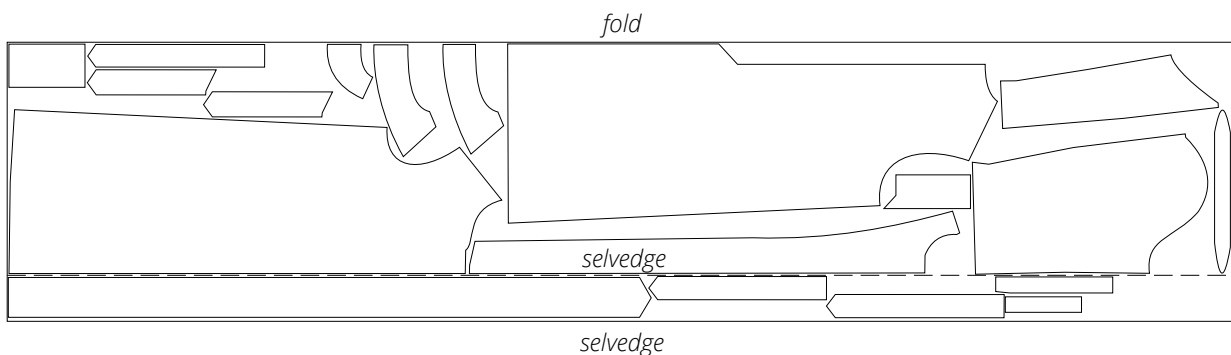


Attention! Cut the collar stand pieces on a single layer out of leftover fabric.

Attention! The fold is offset to accommodate the belt, epaulet, loop, and belt loop pieces. Cut only one of the following pieces: belt, loop, and belt loop.

The remainder of the pattern pieces should be cut in pairs.

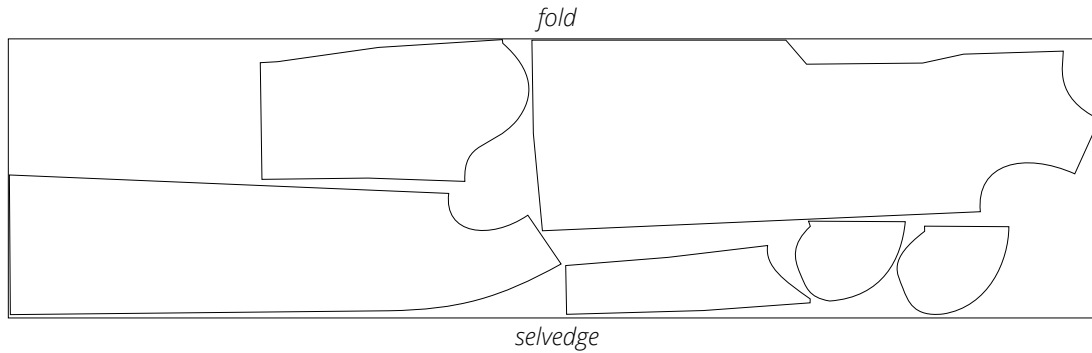
Main fabric, 150 cm (59") wide, with a directional print/nap, cut with one offset fold, for sizes 48–52 in all heights



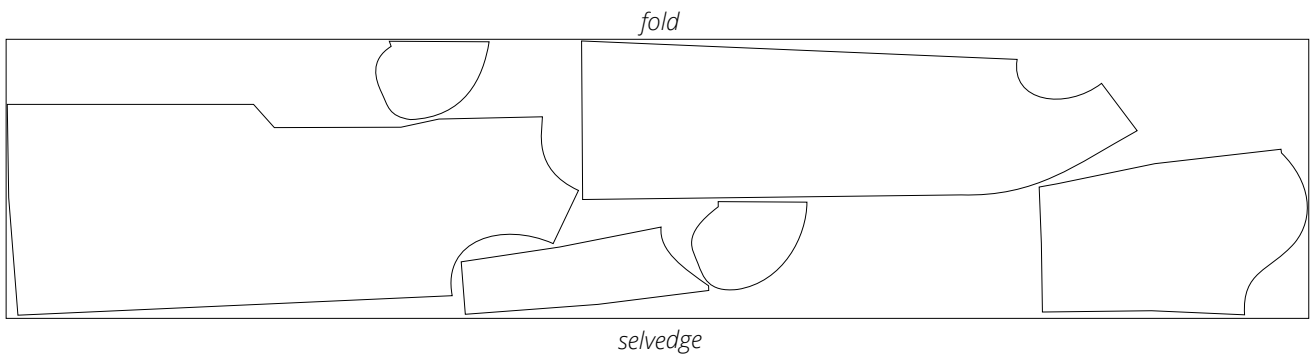
Attention! The fold is offset to accommodate the belt, sleeve tab, loop, and belt loop pieces. Cut only one of the following pieces: belt, loop, and belt loop.

The remainder of the pattern pieces should be cut in pairs.

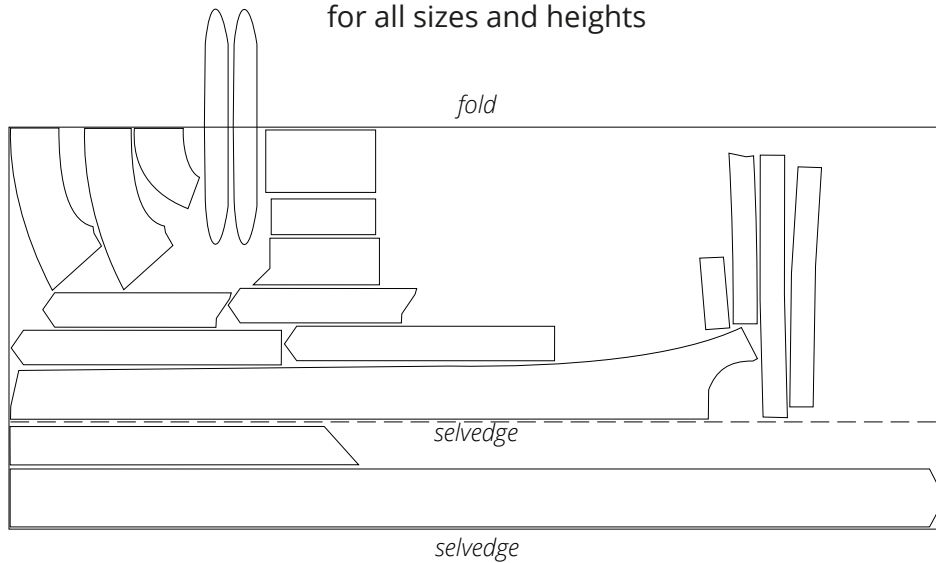
Lining fabric, 140 cm (55") wide, with a directional print, cut on fold,
for sizes 34–42 in all heights



Lining fabric, 140 cm (55") wide, with a directional print, cut on fold,
for sizes 44–52 in all heights



Interfacing, 140 cm (55") wide, cut on fold,
for all sizes and heights



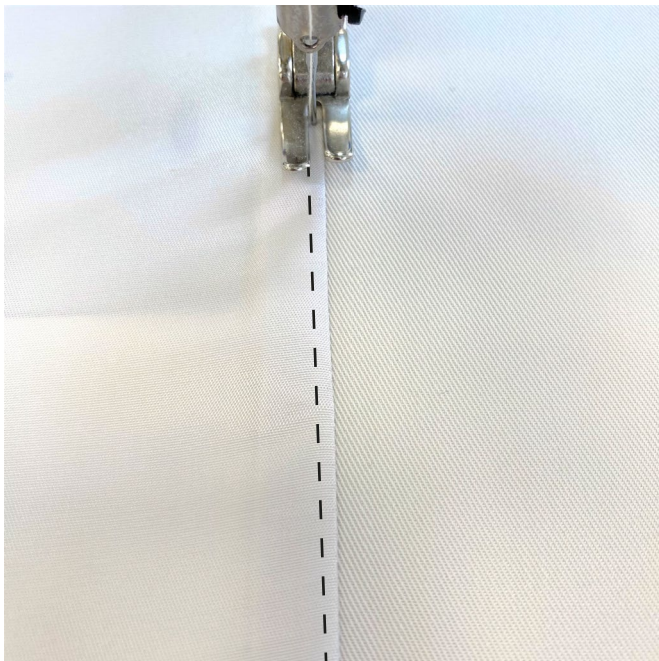
Attention! Cut the collar stand pieces on a single layer out of leftover fabric.

Attention! The fold is offset to accommodate the belt piece and the vent extension. Cut only one of the following: belt piece and vent extension. The remainder of the pattern pieces should be cut in pairs.

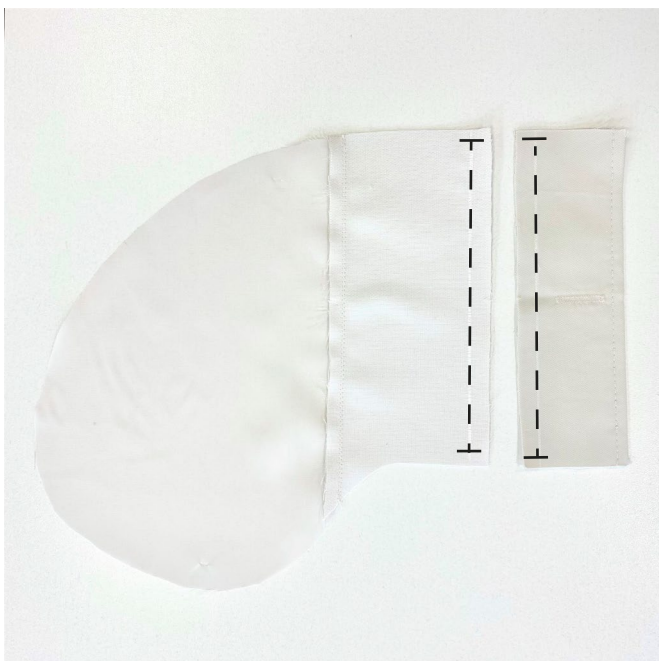
READY? LET'S GET SEWING!



Press the seam flat. Press the seam allowances toward the pocket top lining piece.



Understitch the seam allowances to the lining at 2 mm from the seam. Press the seam flat.



Transfer the welt stitching line from the pattern to the inner side of the welt piece. Transfer the pocket facing stitching line from the pattern to the wrong side of the pocket facing piece. Make vertical stop marks at both ends of each line.