

FROM THE FOUNDER OF THE VIKISEWS® BRAND

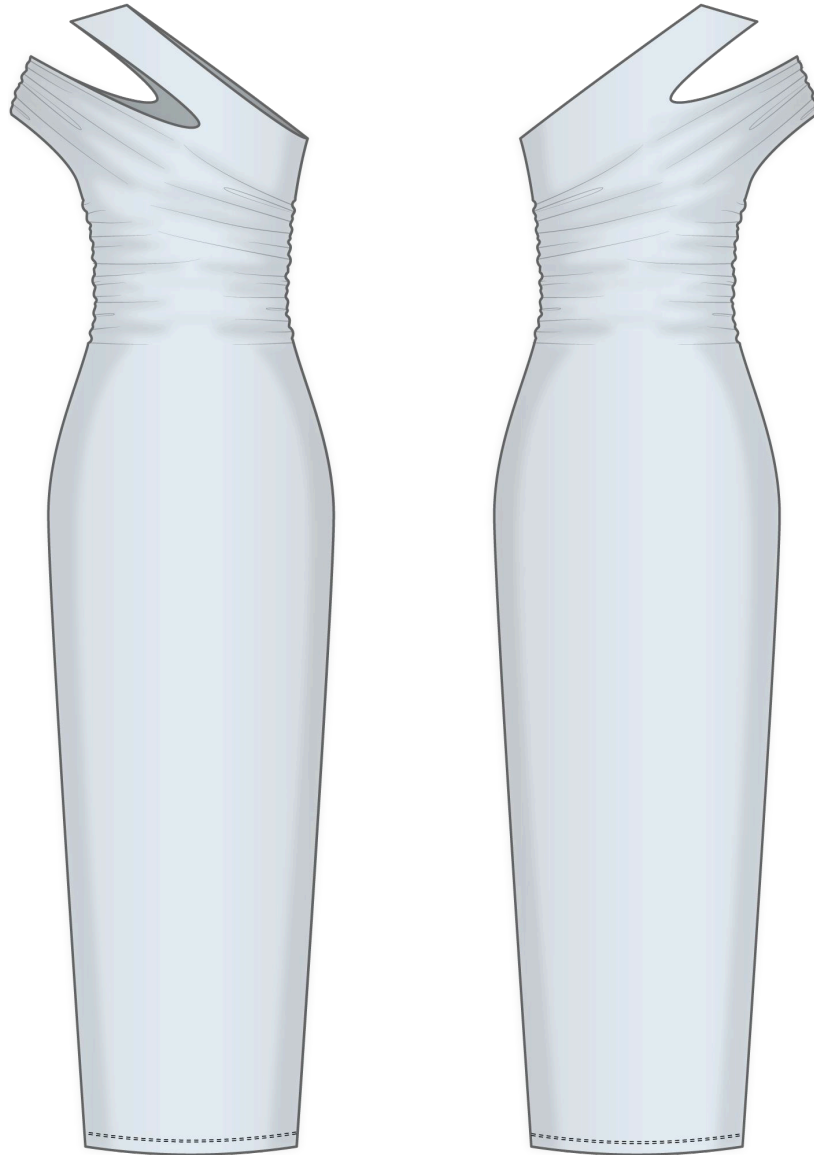


Back in 2016, when I started making my first sewing patterns and instruction manuals, my main goal was to solve the problems I personally faced at the beginning of my sewing journey: the lack of stylish patterns that provide a great fit and contain clear sewing instructions. That's how Vikisews was born—a brand designed to help you create fashionable, on-trend clothing with your own hands.



The sewing instructions we create is the result of our team's careful, meticulous work. May they help you develop your sewing hobby—or even turn it into your life's work! Enjoy every step of the sewing process and create a thoughtful, stylish wardrobe!

If you have any questions, we're always here to help: info@vikisews.com



BEYONCE PATTERN DESCRIPTION

Beyonce is a close-fitting dress with a one-shoulder asymmetric neckline. The side seams and the right shoulder seam are gathered. The right shoulder seam has a decorative cutout at the front and back. The dress is self-lined. Beyonce is ankle-length.



PLEASE READ BEFORE USE

The contents of this pattern are copyright protected and belong exclusively to Vikisews. You may use Vikisews patterns for personal use. It is prohibited to share Vikisews patterns and instructions with third parties, as well as to publish patterns and instructions online for public access. **Non-compliance with the mentioned rules is a violation of the US copyright law and may result in civil liability and criminal prosecution.**

You may use Vikisews patterns for commercial use, to sew custom-made garments and/or create fashion collections, on the condition that the patterns are solely used in a manufacturing setting and are not further shared with individuals.

TOTAL EASE ALLOWANCE

	Bust ease (estimated)	Waistline ease	Hipline ease
cm	-15.4 to -24.4	-5.1 to -8.1	-10.4 to -10.8
inches	-6 1/8 to -9 5/8	-2 to -3 1/4	-4 1/8 to -4 1/4

GARMENT LENGTH

Height, cm	Back length from waist down, cm
1 (154–160)	83
2 (162–168)	86
3 (170–176)	89
4 (178–184)	92

Height, ft	Back length from waist down, in
1 (5'1"–5'3")	32 5/8
2 (5'4"–5'6")	33 7/8
3 (5'7"–5'9")	35
4 (5'10"–6'1")	36 1/4

SUGGESTED FABRICS

To sew this dress, choose medium-weight, pliable, soft, stretchy knit fabrics made of natural, artificial, blended, or synthetic fibers. The stretch factor should be 1.5–2.

Attention! We recommend using only stretchy fabrics with good shape recovery after stretching for this dress. You can determine the stretch factor of your fabric yourself. Mark 10 cm (4") along the crosswise grain of the fabric, lay a ruler next to the marked section, and stretch the fabric. Divide the measurement you get by 10.

The dress in the photo is made of thin sweater knit. The fabric is medium weight, pliable, and stretchy. The fiber content is 55% acetate + 45% polyester. The fabric weight is 285 g/m². The stretch factor is 1.5.

FABRIC AND NOTIONS REQUIREMENTS

1. Main fabric, 140 cm wide, with a directional print/nap, in meters:

Height, cm	Size							
	34	36	38	40	42	44	46-48	50-52
1 (154-160)	2.55	2.55	2.6	2.65	2.65	2.7	2.7	2.75
2 (162-168)	2.65	2.65	2.65	2.7	2.75	2.8	2.8	2.8
3 (170-176)	2.7	2.75	2.75	2.8	2.8	2.85	2.9	2.9
4 (178-184)	2.8	2.8	2.85	2.9	2.9	2.95	3	3

Main fabric, 55" wide, with a directional print/nap, in yards:

Height, ft	Size							
	34	36	38	40	42	44	46-48	50-52
1 (5'1"-5'3")	2 3/4	2 3/4	2 7/8	2 7/8	2 7/8	2 7/8	3	3
2 (5'4"-5'6")	2 7/8	2 7/8	2 7/8	3	3	3	3	3
3 (5'7"-5'9")	3	3	3	3	3	3	3 1/8	3 1/8
4 (5'10"-6'1")	3	3	3 1/8	3 1/8	3 1/8	3 1/8	3 1/4	3 1/4

2. Main fabric, 180 cm wide, with a directional print/nap, in meters:

Height, cm	Size							
	34-36	38	40	42	44-46	48	50	52
1 (154-160)	1.5	2	2.45	2.5	2.55	2.55	2.6	2.6
2 (162-168)	1.55	2.05	2.5	2.6	2.6	2.65	2.65	2.7
3 (170-176)	1.6	2.1	2.6	2.7	2.7	2.7	2.75	2.75
4 (178-184)	1.65	2.15	2.65	2.75	2.8	2.8	2.85	2.85

Main fabric, 71" wide, with a directional print/nap, in yards:

Height, ft	Size							
	34-36	38	40	42	44-46	48	50	52
1 (5'1"-5'3")	1 5/8	2 1/8	2 5/8	2 3/4	2 3/4	2 3/4	2 7/8	2 7/8
2 (5'4"-5'6")	1 3/4	2 1/4	2 3/4	2 7/8	2 7/8	2 7/8	2 7/8	3
3 (5'7"-5'9")	1 3/4	2 1/4	2 7/8	3	3	3	3	3
4 (5'10"-6'1")	1 3/4	2 3/8	2 7/8	3	3	3	3 1/8	3 1/8

***IMPORTANT!** When purchasing fabric, please account for shrinkage and buy 5% more than required.*

3. Soft lingerie elastic, 5–7 mm (1/4") wide 1.3–1.7 m (1 3/8–1 7/8 yd), depending on the size. The exact elastic length is specified in the pattern
4. Clear elastic, 1 cm (3/8") wide — 0.5 m (1/2 yd)
5. Matching thread — 5 spools (1 spool for the sewing machine + 4 spools for the overlocker)

TOOLS AND EQUIPMENT

- sewing machine for construction and for creating gathers
- overlocker for stitching and finishing raw edges. This may be replaced with a stretch overlock stitch or a zigzag stitch on the sewing machine (overlock or zigzag stitch width 2–3 mm, stitch length 2.5 mm)
- coverstitch or coverlock machine for finishing the garment hem. If you don't have a coverstitch machine, the hem can be finished with a twin needle on a regular sewing machine with a zigzag function

***IMPORTANT!** When working with knit fabrics, we recommend using specialty needles for sewing knits (for example, **STRETCH**, **SUPER STRETCH**, **JERSEY**, etc.). These have a ballpoint needle tip that separates the knit loops without piercing the threads while sewing.*

PATTERN PIECES LIST

From main fabric:

- front — cut 1
- back — cut 1
- front lining — cut 1
- back lining — cut 1

***IMPORTANT!** Don't forget to transfer all pattern markings and notches onto the fabric.*

***IMPORTANT!** The pattern pieces that have the "face" inscription on them should be placed with the blank side onto the right side of fabric when cutting.*

SEAM ALLOWANCES

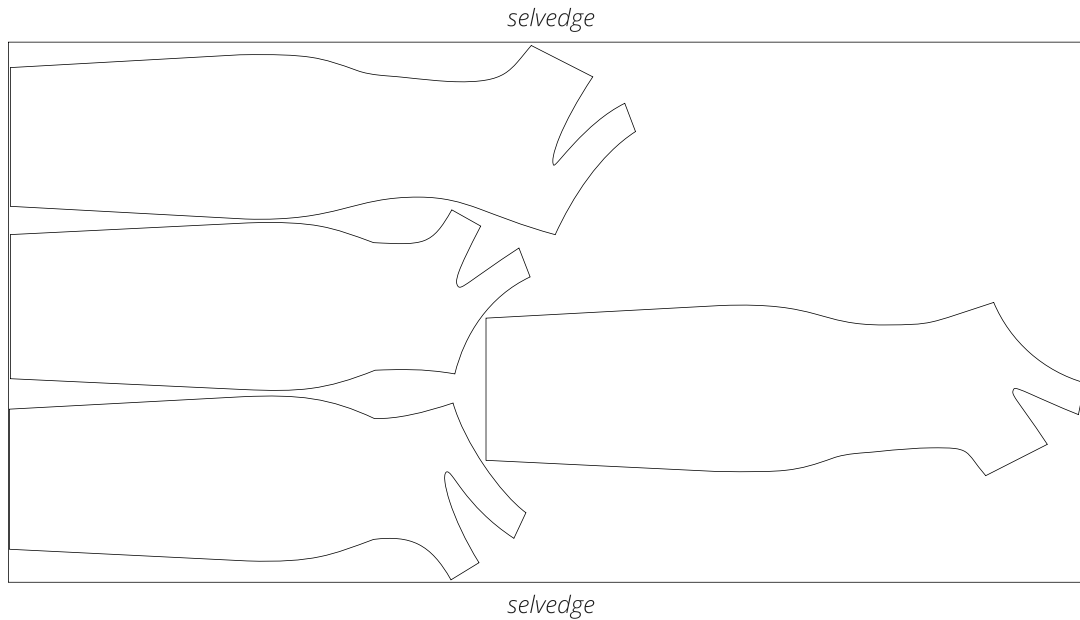
All pattern pieces include seam allowances as follows:

- garment hem allowance — 2 cm (3/4")
- all other edges — 1 cm (3/8")

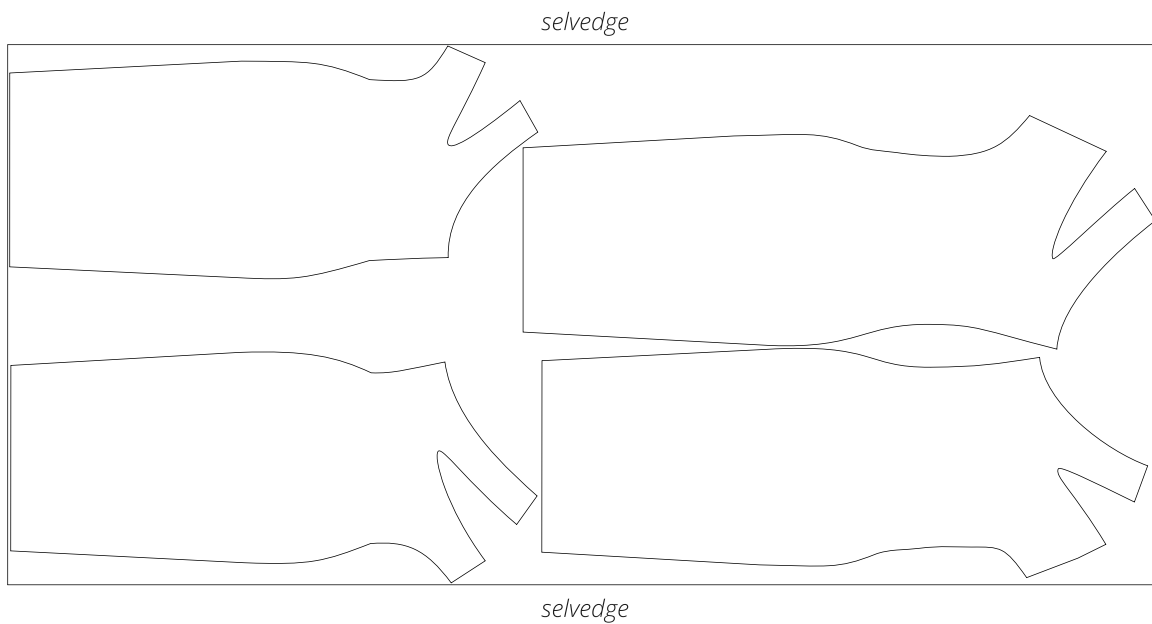
Take this into account when laying out the pattern pieces on the fabric.

CUTTING LAYOUT

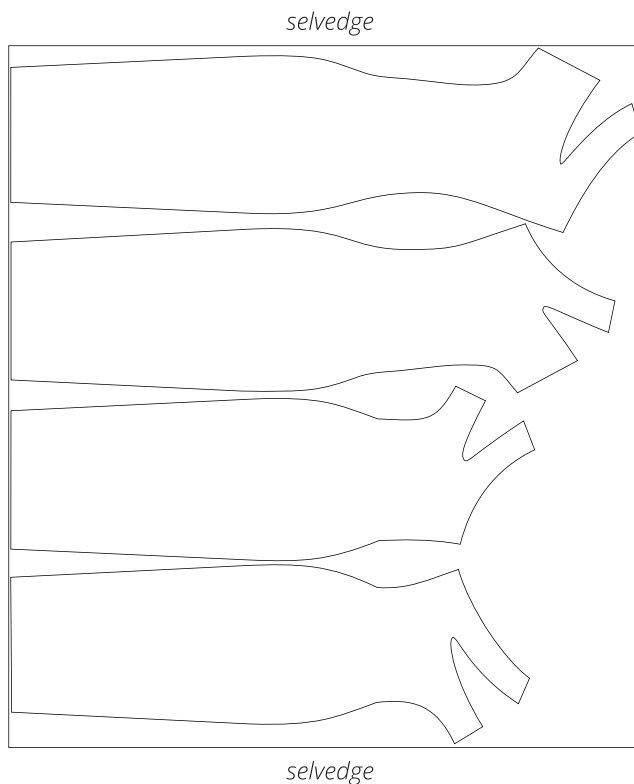
Main fabric, 140 cm (55") wide, with a directional print/nap, cut on a single layer,
for sizes 34–38 in all heights



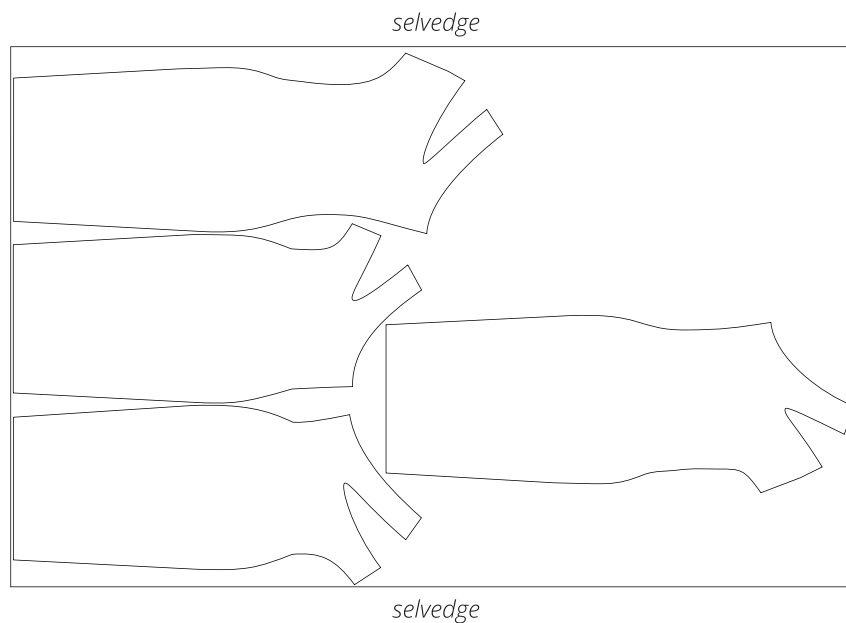
Main fabric, 140 cm (55") wide, with a directional print/nap, cut on a single layer,
for sizes 40–52 in all heights



Main fabric, 180 cm (71")wide, with a directional print/nap, cut on a single layer,
for sizes 34–36 in all heights



Main fabric, 180 cm (71")wide, with a directional print/nap, cut on a single layer,
for sizes 38–52 in all heights



READY? LET'S GET SEWING!



6. Hand-baste.



7. Stitch on the overlocker with the back piece facing up. Remove the basting stitches.

Use a 4-thread overlocker for this step, as well as for the following similar steps. You can replace the overlocker with a stretch overlock stitch or a zigzag stitch on the sewing machine.

Important! All pattern pieces include 1 cm seam allowances. The overlocker stitch width is 7 mm (just over 1/4"), so 3 mm (1/8") need to be trimmed off. You can either trim the seam allowances beforehand or let the overlocker cut off the extra fabric while stitching.



8. Remove the gathering stitches from the right side of the garment.



9. Press the shoulder seam allowances towards the front piece.