

FROM THE FOUNDER OF THE #VIKISEWS BRAND

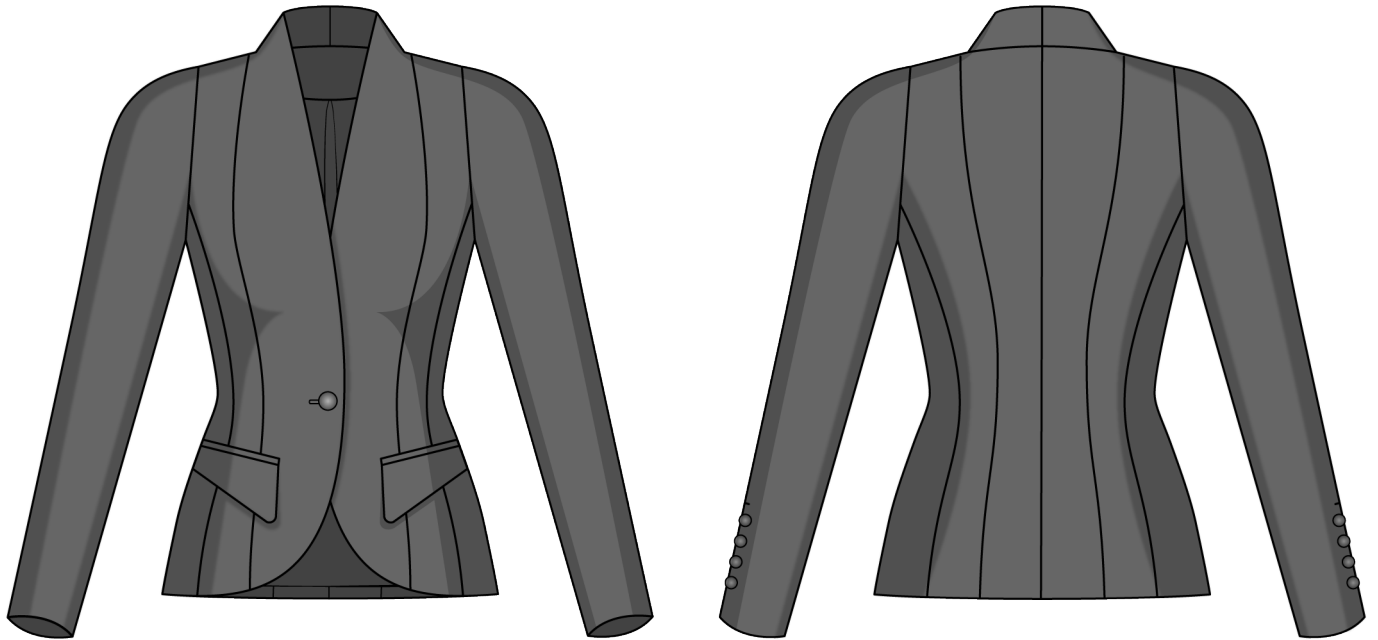


Back in 2016, when I was working on my first set of sewing instructions, I was trying to write them in such a way that even a complete beginner could easily understand and use them to create their very first garment. These instructions laid the foundation for the Vikisews brand, its vision and its mission. I wanted to create modern patterns with the utmost detailed and clear instructions.

Now, with each new collection we are constantly improving our instructions, amending them and adding more relevant details. By the time the final product reaches you, our drafters, correctors, and editors would have spent weeks perfecting every word and every photograph. If you compile a few of our instructions together, you will get a sewing manual that will assist you in sewing all kinds of garments at any difficulty level.

And I would be very happy if these instructions helped you to turn your hobby into a lifelong passion... Enjoy the process! Create your ultimate dream wardrobe! Wear your garments proudly for years to come!

If you have any questions, please contact us at info@vikisews.com — we are always there to help.



MELEYS PATTERN DESCRIPTION

Meleys is a close-fitting lined blazer with an accentuated waist. It is shaped with front and back princess seams and a center back seam. The blazer closes with a button and buttonhole at the center front. The shoulder line is extended. The long half-raglan sleeves are made up of two pieces and feature a vent with sewn-on buttons. The blazer features a grown-on stand collar. Meleys is above-hip length.



IMPORTANT!

The contents of this pattern are copyright protected and belong exclusively to Vikisews. You may use Vikisews patterns for personal use. It is prohibited to share Vikisews patterns and instructions with third parties, as well as to publish patterns and instructions online for public access. **Non-compliance with the mentioned rules is a violation of the US copyright law and may result in civil liability and criminal prosecution.**

You may use Vikisews patterns for commercial use, to sew custom-made garments and/or create fashion collections, on the condition that the patterns are solely used in a manufacturing setting and are not further shared with individuals.

TOTAL EASE ALLOWANCE

	Bust ease	Waistline ease	Hipline ease	Upper arm ease
cm	9.2–4.9	4.7–5	9.8–9.7	7.2–5.5
inches	3 5/8–1 7/8	1 7/8–2	3 7/8	2 7/8–2 1/8

GARMENT LENGTH, SLEEVE LENGTH

Height, cm	Garment length, cm	Sleeve length including shoulder width, cm
1 (154–160)	58.1–60.7	72.7–74.8
2 (162–168)	61.2–63.9	74.8–76.9
3 (170–176)	64–66.7	77–78.9
4 (178–184)	67–69.7	79–80.9

Height, ft	Garment length, in	Sleeve length including shoulder width, in
1 (5'1"–5'3")	22 7/8–23 7/8	28 5/8–29 1/2
2 (5'4"–5'6")	24 1/8–25 1/8	29 1/2–30 1/4
3 (5'7"–5'9")	25 1/4–26 1/4	30 3/8–31 1/8
4 (5'10"–6'1")	26 3/8–27 1/2	31 1/8–31 7/8

SUGGESTED FABRIC

To sew this blazer, choose suiting fabrics with the following properties:

- medium weight, structured, non-stretch or low-stretch
- the fiber content can include natural fibers (wool), artificial fibers (viscose), blends (wool + silk, wool + polyester, etc.), and synthetics (polyester)
- the following fabrics are recommended: suiting, gabardine, jacquard

Attention! We do not recommend stretchy, soft, lightweight (dress-weight wool), and loosely woven suiting fabrics.

For the lining, choose lining fabrics made of artificial fibers (viscose), blends (viscose + elastane, viscose + polyester), or synthetics (polyester, polyester + elastane).

The blazer in the photo is made of suiting fabric. The fabric is medium weight, structured, and non-stretch. The fiber content is 45% cotton and 55% polyester. The fabric weight is 250 g/m². The lining is a blend of 55% polyester and 45% viscose. The fabric weight is 130 g/m².

FABRIC AND NOTIONS REQUIREMENTS

1. Main fabric, 200–280 g/m², 140 cm wide, with a directional print/nap, in meters:

Height, cm	Size									
	34	36	38	40	42	44	46	48	50	52
1 (154–160)	1.45	1.5	1.55	1.6	1.65	1.65	1.7	1.85	1.85	1.9
2 (162–168)	1.5	1.55	1.55	1.65	1.7	1.7	1.75	1.9	1.95	2
3 (170–176)	1.6	1.6	1.6	1.7	1.75	1.75	1.8	1.95	2	2.05
4 (178–184)	1.6	1.65	1.65	1.75	1.8	1.8	1.85	2	2.05	2.15

Main fabric, 200–280 g/m², 55" wide, with a directional print/nap, in yards:

Height, ft	Size									
	34	36	38	40	42	44	46	48	50	52
1 (5'1"–5'3")	1 5/8	1 5/8	1 3/4	1 3/4	1 3/4	1 3/4	1 7/8	2	2	2 1/8
2 (5'4"–5'6")	1 5/8	1 3/4	1 3/4	1 3/4	1 7/8	1 7/8	1 7/8	2 1/8	2 1/8	2 1/8
3 (5'7"–5'9")	1 3/4	1 3/4	1 3/4	1 7/8	1 7/8	1 7/8	2	2 1/8	2 1/8	2 1/4
4 (5'10"–6'1")	1 3/4	1 3/4	1 3/4	1 7/8	2	2	2	2 1/8	2 1/4	2 3/8

2. Lining fabric, 100–150 g/m², 140 cm wide, in meters:

Height, cm	Size		
	34–38	40–48	50–52
1 (154–160)	1.2	1.25	1.3
2 (162–168)	1.25	1.3	1.35
3 (170–176)	1.3	1.35	1.4
4 (178–184)	1.35	1.4	1.45

Lining fabric, 100–150 g/m², 55" wide, in yards:

Height, ft	Size		
	34–38	40–48	50–52
1 (5'1"–5'3")	1 1/4	1 3/8	1 3/8
2 (5'4"–5'6")	1 3/8	1 3/8	1 1/2
3 (5'7"–5'9")	1 3/8	1 1/2	1 1/2
4 (5'10"–6'1")	1 1/2	1 1/2	1 5/8

3. Lightweight knit or woven interfacing, 40 g/m², 140 cm wide, in meters:

Height, cm	Size									
	34	36	38	40	42	44	46	48	50	52
1 (154–160)	1.45	1.5	1.55	1.6	1.65	1.65	1.7	1.85	1.85	1.9
2 (162–168)	1.5	1.55	1.55	1.65	1.7	1.7	1.75	1.9	1.95	2
3 (170–176)	1.6	1.6	1.6	1.7	1.75	1.75	1.8	1.95	2	2.05
4 (178–184)	1.6	1.65	1.65	1.75	1.8	1.8	1.85	2	2.05	2.15

Lightweight knit or woven interfacing, 40 g/m², 55" wide, in yards:

Height, ft	Size									
	34	36	38	40	42	44	46	48	50	52
1 (5'1"–5'3")	1 5/8	1 5/8	1 3/4	1 3/4	1 3/4	1 3/4	1 7/8	2	2	2 1/8
2 (5'4"–5'6")	1 5/8	1 3/4	1 3/4	1 3/4	1 7/8	1 7/8	1 7/8	2 1/8	2 1/8	2 1/8
3 (5'7"–5'9")	1 3/4	1 3/4	1 3/4	1 7/8	1 7/8	1 7/8	2	2 1/8	2 1/8	2 1/4
4 (5'10"–6'1")	1 3/4	1 3/4	1 3/4	1 7/8	2	2	2	2 1/8	2 1/4	2 3/8

***IMPORTANT!** When purchasing fabric, please account for shrinkage and buy 5% more than required.*

4. Stitched bias-cut fusible stay tape with stitch reinforcement, 1.5 cm (5/8") wide — 2.89–3.52 m (3 1/8–3 7/8 yd)
5. One button, 2.2–2.5 cm (7/8–1") in diameter
6. Eight buttons, 1.2–1.5 cm (1/2–5/8") in diameter
7. One pair of raglan shoulder pads, 1.5–2 cm (5/8–3/4") tall
8. Matching thread — 1 spool for the sewing machine

TOOLS AND EQUIPMENT

- sewing machine for construction
- buttonhole foot for the sewing machine
- stitch-in-the-ditch foot for the sewing machine (optional)

PATTERN PIECES LIST

1. From main fabric:

- center front — cut 2
- middle front — cut 2
- side front — cut 2
- center back — cut 2
- middle back — cut 2
- side back — cut 2
- front sleeve — cut 2
- back sleeve — cut 2
- front facing — cut 2
- back neck facing — cut 1 on fold
- pocket top welt — cut 2
- pocket bottom welt — cut 2
- pocket top flap — cut 2
- pocket facing — cut 2

2. From lining fabric:

- front lining — cut 2
- back lining — cut 2
- front sleeve lining — cut 2
- back sleeve lining — cut 2
- pocket top lining — cut 2
- pocket bottom lining — cut 2
- pocket bottom flap — cut 2

***IMPORTANT!** Don't forget to transfer all pattern markings and notches onto the fabric.*

3. From interfacing:

- center front — cut 2
- middle front — cut 2
- side front — cut 2
- center back — cut 2
- middle back — cut 2
- side back — cut 2
- front sleeve — cut 2
- back sleeve — cut 2
- front facing — cut 2
- back neck facing — cut 1 on fold
- pocket top welt — cut 2
- pocket bottom welt — cut 2
- pocket top flap — cut 2
- pocket facing — cut 2
- pocket interfacing strip — cut 2

SEAM ALLOWANCES

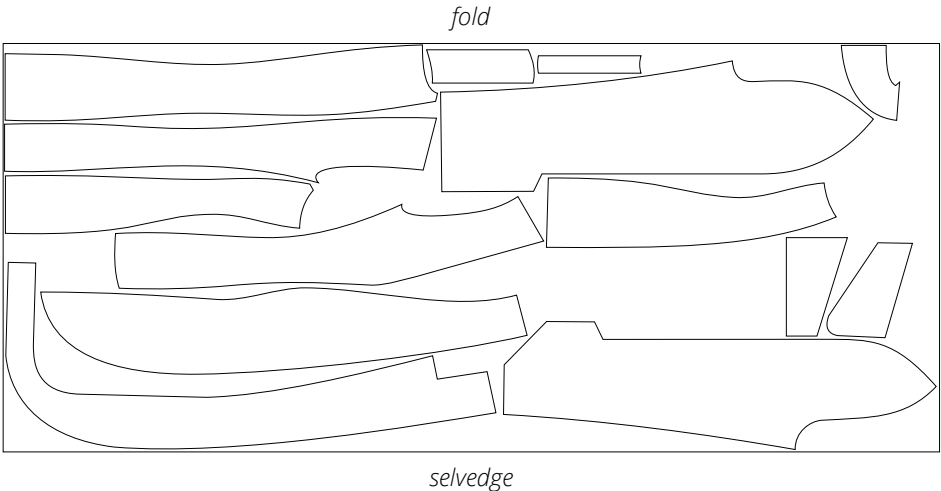
All pattern pieces include seam allowances as follows:

- garment hem allowance — 4 cm (1 5/8")
- sleeve hem allowance — 4 cm (1 5/8")
- all other edges — 1 cm (3/8")

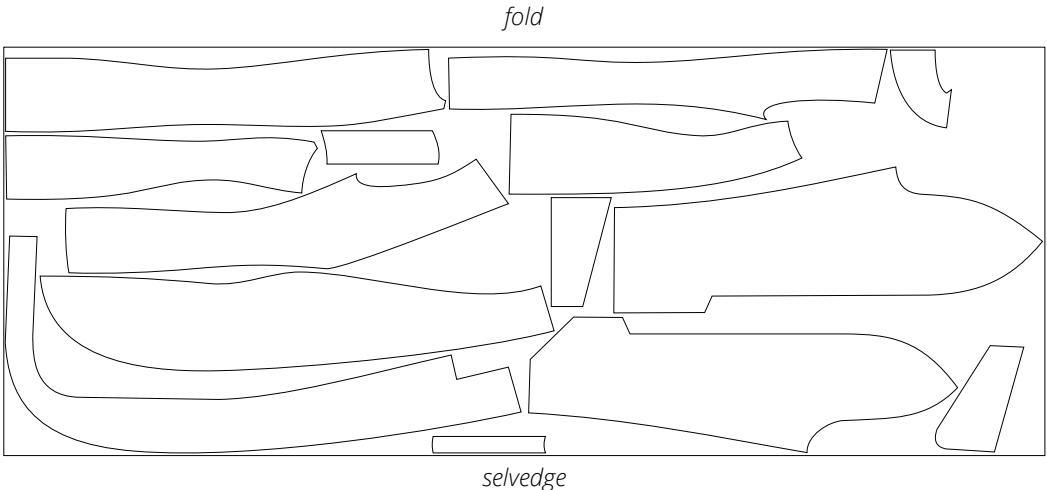
Take this into account when laying out pattern pieces on the fabric.

CUTTING LAYOUT

Main fabric, 140 cm (55") wide, with a directional print/nap, cut on fold, for sizes 34-38 in all heights

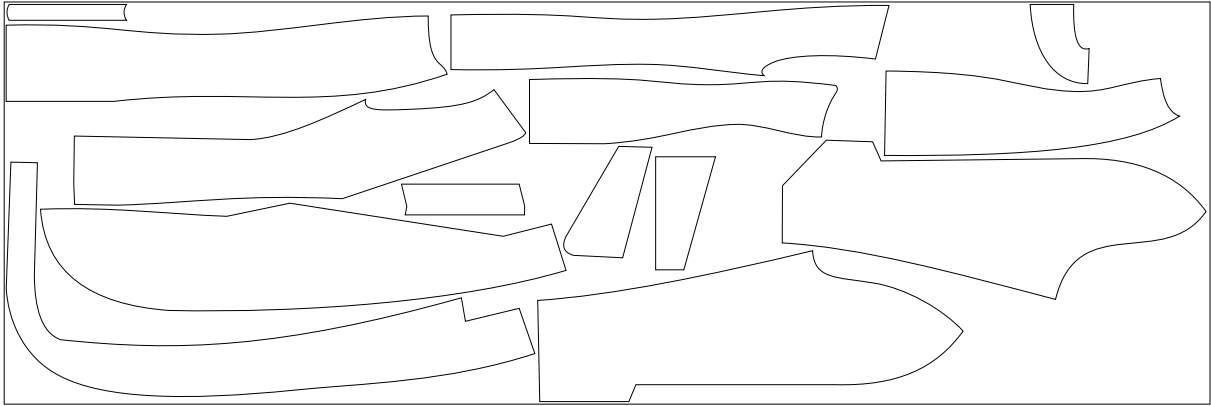


Main fabric, 140 cm (55") wide, with a directional print/nap, cut on fold, for sizes 40-46 in all heights



Main fabric, 140 cm (55") wide, with a directional print/nap,
cut on fold, for sizes 48-52 in all heights

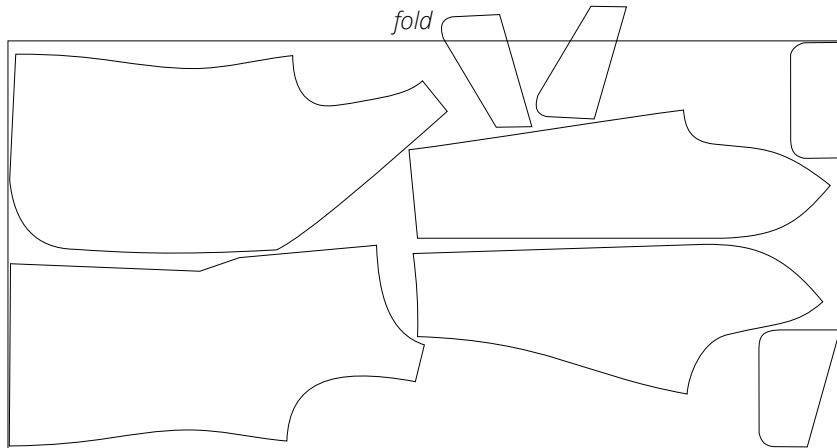
fold



selvedge

Lining fabric, 140 cm (55") wide, with a directional print, cut on fold,
for all sizes in all heights

fold

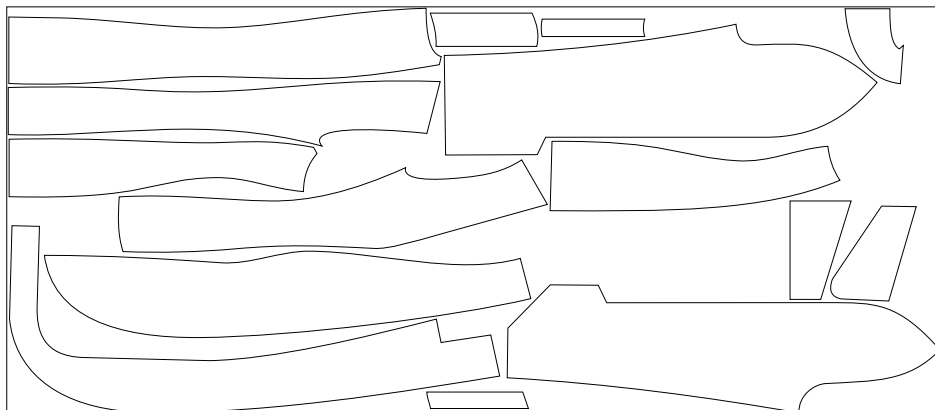


selvedge

Attention! Cut the pocket bottom flap pieces on a single layer out of the leftover fabric.

Interfacing, 140 cm (55") wide, cut on fold,
for sizes 34-38 in all heights

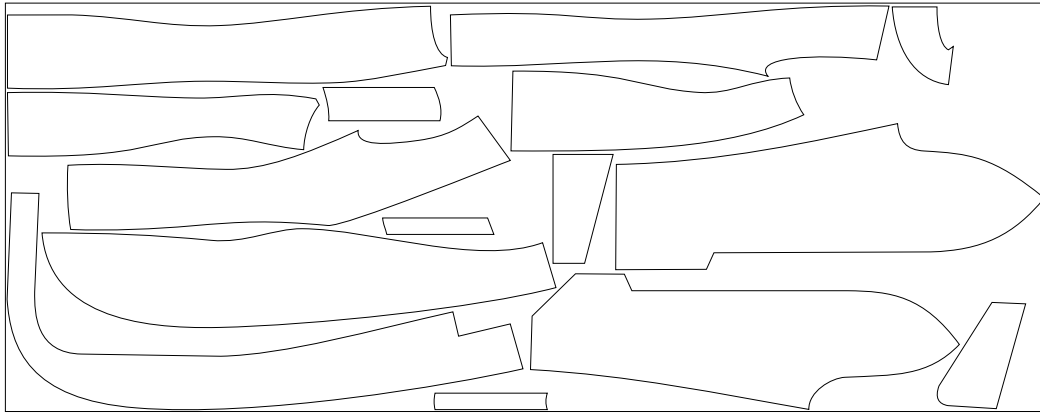
fold



selvedge

Interfacing, 140 cm (55") wide, cut on fold,
for sizes 40-46 in all heights

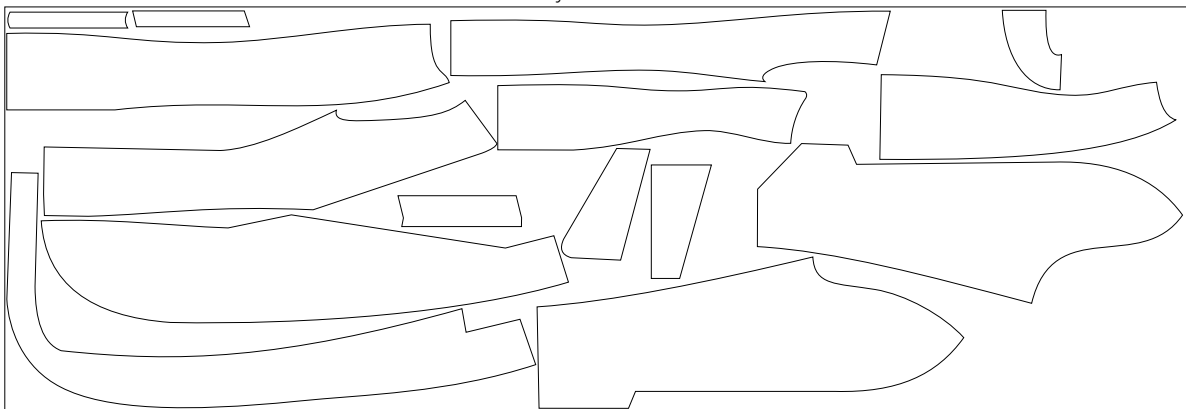
fold



selvedge

Interfacing, 140 cm (55") wide, cut on fold,
for sizes 48-52 in all heights

fold



selvedge

READY? LET'S GET SEWING!



On the right side of the assembled front piece, chalk-mark the pocket bounding box, including the side edges, following the thread-traced line.

Remove the thread tracing.



Place the bottom welt onto the front piece, right sides together. Align the stitching line marked on the bottom welt with the bottom pocket opening line. Align the side edges of the pocket.

Pin and hand-baste in place.

Important! The folded edge of the bottom welt should be facing downwards.

Stitch on the sewing machine. Backstitch at the beginning and end of the seam.



Fold the seam allowances of the pocket bottom welt down and pin in place.