

FROM THE FOUNDER OF THE VIKISEWS® BRAND

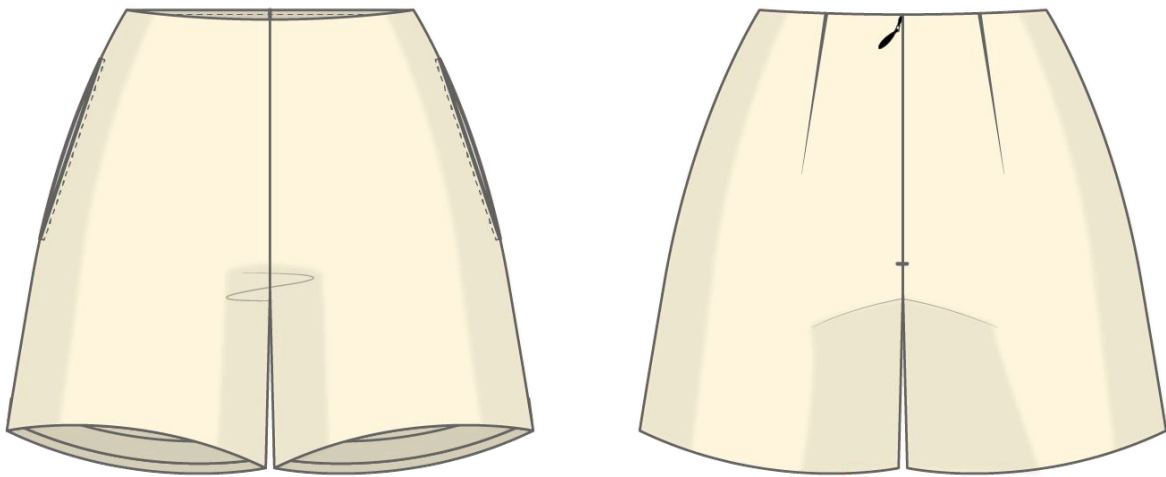


Back in 2016, when I started making my first sewing patterns and instruction manuals, my main goal was to solve the problems I personally faced at the beginning of my sewing journey: the lack of stylish patterns that provide a great fit and contain clear sewing instructions. That's how Vikisews was born—a brand designed to help you create fashionable, on-trend clothing with your own hands.



The sewing instructions we create is the result of our team's careful, meticulous work. May they help you develop your sewing hobby—or even turn it into your life's work! Enjoy every step of the sewing process and create a thoughtful, stylish wardrobe!

If you have any questions, we're always here to help: info@vikisews.com



FLORA PATTERN DESCRIPTION

Flora is a pair of semi-fitted shorts flared towards the bottom. The back features waist darts. The top edge is finished with a facing. There are pockets in the side seams. The shorts close with an invisible zipper in the center back seam. The bottom edges are finished with horsehair ribbon. The shorts are above-knee length.



PLEASE READ BEFORE USE

The contents of this pattern are copyright protected and belong exclusively to Vikisews. You may use Vikisews patterns for personal use. It is prohibited to share Vikisews patterns and instructions with third parties, as well as to publish patterns and instructions online for public access. **Non-compliance with the mentioned rules is a violation of the US copyright law and may result in civil liability and criminal prosecution.**

You may use Vikisews patterns for commercial use, to sew custom-made garments and/or create fashion collections, on the condition that the patterns are solely used in a manufacturing setting and are not further shared with individuals.

TOTAL EASE ALLOWANCE

	Waistline ease	Hipline ease
cm	1–1.2	4.7–8
inches	3/8–1/2	1 7/8–3 1/8

GARMENT LENGTH

Height, cm	Side seam length, cm	Finished hem width, cm
1 (154–160)	33.5–38.8	34.6–43.9
2 (162–168)	35.2–40.4	34.9–44.2
3 (170–176)	36.9–42.1	35.1–44.4
4 (178–184)	38.6–43.8	35.4–44.7

Height, ft	Side seam length, in	Finished hem width, in
1 (5'1"–5'3")	13 1/4–15 1/4	13 5/8–17 1/4
2 (5'4"–5'6")	13 7/8–15 7/8	13 3/4–17 3/8
3 (5'7"–5'9")	14 1/2–16 5/8	13 7/8–17 1/2
4 (5'10"–6'1")	15 1/4–17 1/4	13 7/8–17 5/8

SUGGESTED FABRICS

To sew these shorts, choose suiting fabrics with the following properties:

- medium weight, soft, non-stretch or low-stretch, opaque

The fiber content can include natural fibers (wool, cotton, silk), blended fibers (wool + polyester, cotton + polyester, etc.), and synthetic fibers (polyester).

The following fabrics are recommended: suiting fabric, gabardine.

For the pocket lining, use lining fabrics or pocketing made of natural fibers (silk), artificial fibers (viscose), synthetic fibers (polyester), or blended fabrics (viscose + polyester, silk + viscose, viscose + elastane).

The shorts in the photo are made of suiting fabric. The fabric is soft, medium weight, and non-stretch. The fiber content is 75% polyester + 19% viscose + 6% elastane. The fabric weight is 330 g/m².

The lining fiber content is 55% viscose + 45% polyester. The fabric weight is 90 g/m².

FABRIC AND NOTIONS REQUIREMENTS

1. Main fabric, 140 cm wide, with a directional print/nap, in meters:

Height, cm	Size							
	34	36–38	40	42–44	46	48	50	52
1 (154–160)	0.75	0.8	0.9	0.9	0.9	0.95	0.95	1
2 (162–168)	0.8	0.8	0.9	0.9	0.95	1	1	1
3 (170–176)	0.8	0.8	0.95	0.95	1	1	1.05	1.05
4 (178–184)	0.85	0.85	0.95	1	1.05	1.05	1.05	1

Main fabric, 55" wide, with a directional print/nap, in yards:

Height, ft	Size					
	34–38	40	42–44	46	48–50	52
1 (5'1"–5'3")	7/8	1	1	1	1	1 1/8
2 (5'4"–5'6")	7/8	1	1	1	1 1/8	1 1/8
3 (5'7"–5'9")	7/8	1	1	1 1/8	1 1/8	1 1/8
4 (5'10"–6'1")	7/8	1	1 1/8	1 1/8	1 1/8	1 1/8

2. Lining fabric, 140 cm (55") wide, with a directional print, for all sizes in all heights — 0.35 m (3/8 yd)

IMPORTANT! When purchasing fabric, please account for shrinkage and buy 5% more than required.

3. Lightweight interfacing, knit or woven, 140 cm wide, cut in one direction, in meters:

Height, cm	Size	
	34–42	44–52
1 (154–160)	0.1	0.15
2 (162–168)	0.1	0.15
3 (170–176)	0.1	0.15
4 (178–184)	0.1	0.15

Lightweight interfacing, knit or woven, 55" wide, cut in one direction — 1/8 yd

4. Stitched bias-cut fusible stay tape with stitch reinforcement, 1.5 cm (5/8") wide:

Size	34	36	38	40	42	44	46	48	50	52
meters	1.2	1.25	1.3	1.35	1.4	1.45	1.5	1.55	1.6	1.65
yards	1 1/4	1 3/8	1 3/8	1 1/2	1 1/2	1 5/8	1 5/8	1 3/4	1 3/4	1 3/4

5. One invisible zipper, 20–25 cm (8–10") long, for all sizes in all heights

6. One hook-and-eye closure, size S1

7. Horsehair ribbon, 5 cm (2") wide:

Size	34	36	38	40	42	44	46–48	50	52
meters	1.5	1.55	1.6	1.65	1.7	1.75	1.8	1.85	1.9
yards	1 5/8	1 3/4	1 3/4	1 3/4	1 7/8	1 7/8	2	2	2 1/8

8. Matching thread — 5 spools (1 spool for the sewing machine + 4 spools for the overlocker)

TOOLS AND EQUIPMENT

- sewing machine for construction
- overlocker for finishing raw edges. This may be replaced with a stretch overlock stitch or a zigzag stitch on the sewing machine (overlock or zigzag stitch width 2–3 mm, stitch length 2.5 mm)
- stitch-in-the-ditch foot for the sewing machine (optional)
- invisible zipper foot for the sewing machine
- one-sided foot for attaching the zipper

PATTERN PIECES LIST

1. From main fabric:

- front leg — cut 2
- back leg — cut 2
- pocket lining — cut 2
- front facing — cut 1 on fold
- back facing — cut 2

2. From lining:

- pocket lining — cut 2

IMPORTANT! Don't forget to transfer all pattern markings and notches onto the fabric.

3. From interfacing:

- front facing — cut 1 on fold
- back facing — cut 2

SEAM ALLOWANCES

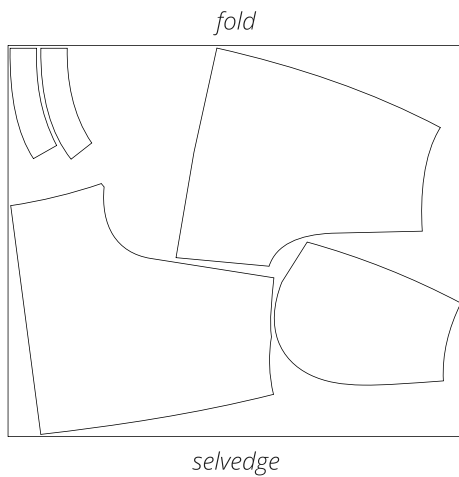
All pattern pieces include seam allowances as follows:

- garment hem allowance — 2 cm (3/4")
- all other edges — 1 cm (3/8")

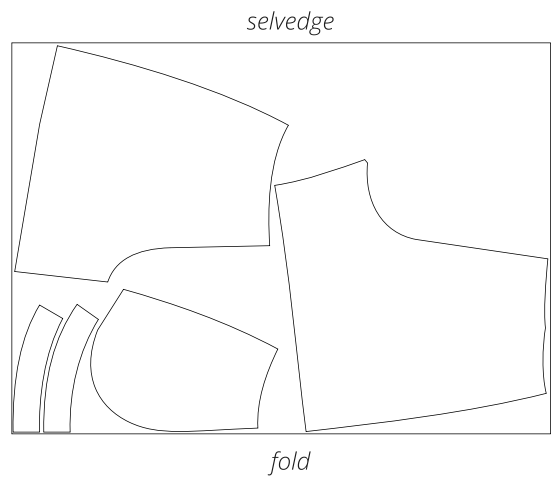
Take this into account when laying out the pattern pieces on the fabric.

CUTTING LAYOUT

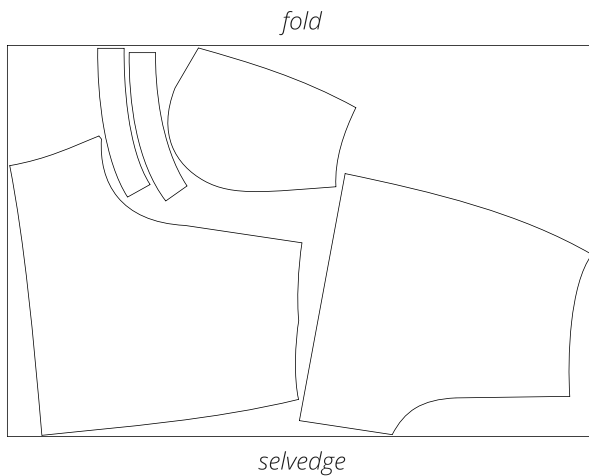
Main fabric, 140 cm (55") wide,
with a directional print/nap, cut on fold,
for sizes 34–38 in all heights



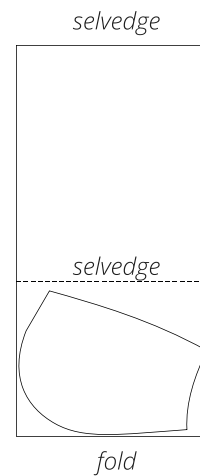
Main fabric, 140 cm (55") wide,
with a directional print/nap, cut on fold,
for sizes 40–44 in all heights



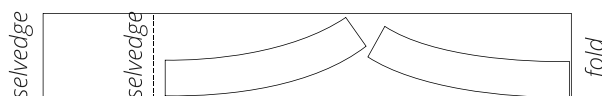
Main fabric, 140 cm (55") wide,
with a directional print/nap, cut on fold,
for sizes 46–52 in all heights



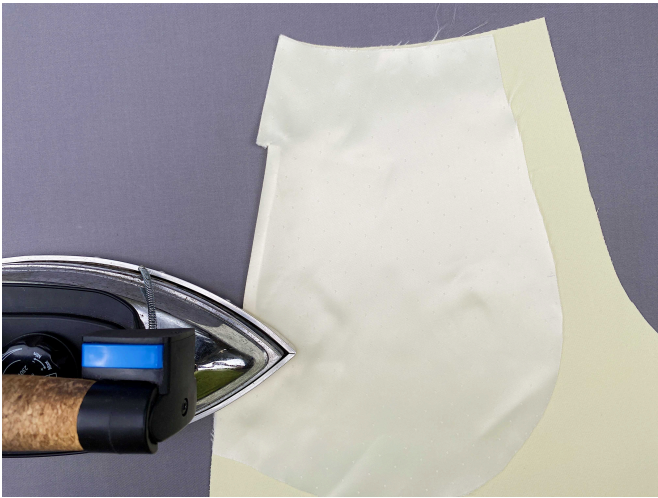
Lining fabric, 140 cm (55") wide,
with a directional print, cut on a partial fold,
for all sizes in all heights



Interfacing, 140 cm (55") wide, cut on a partial fold and in one direction,
for all sizes in all heights



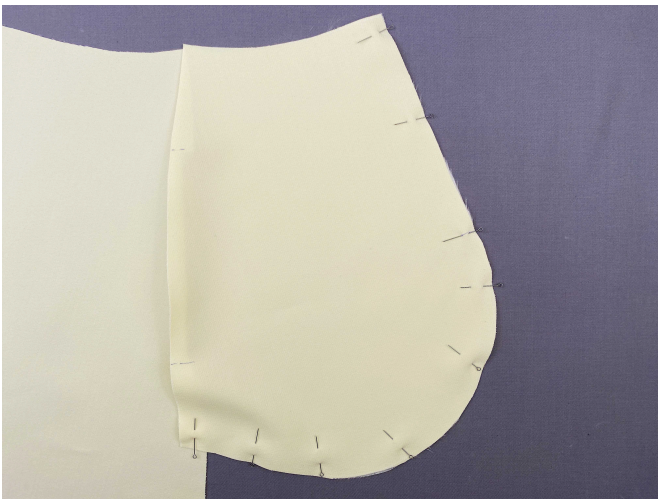
READY? LET'S GET SEWING!



6. Turn the pocket lining to the wrong side of the front leg piece, straighten out the seam allowances above and below the pocket opening. Press the pocket opening, forming a 1–2 mm seam roll towards the pocket lining piece. Pin to secure the pocket opening.



7. Working on the right side of the front leg piece, topstitch at 5 mm (just under 1/4") from the pocket opening edge, backstitching at the beginning and end of the seam.



8. Place the pocket lining pieces cut from the main and lining fabric right sides together. Align the edges, match the notches, and pin.



9. Machine-stitch, backstitching at the beginning and end of the seam.



10. Press the seam flat.