

FROM THE FOUNDER OF THE VIKISEWS® BRAND

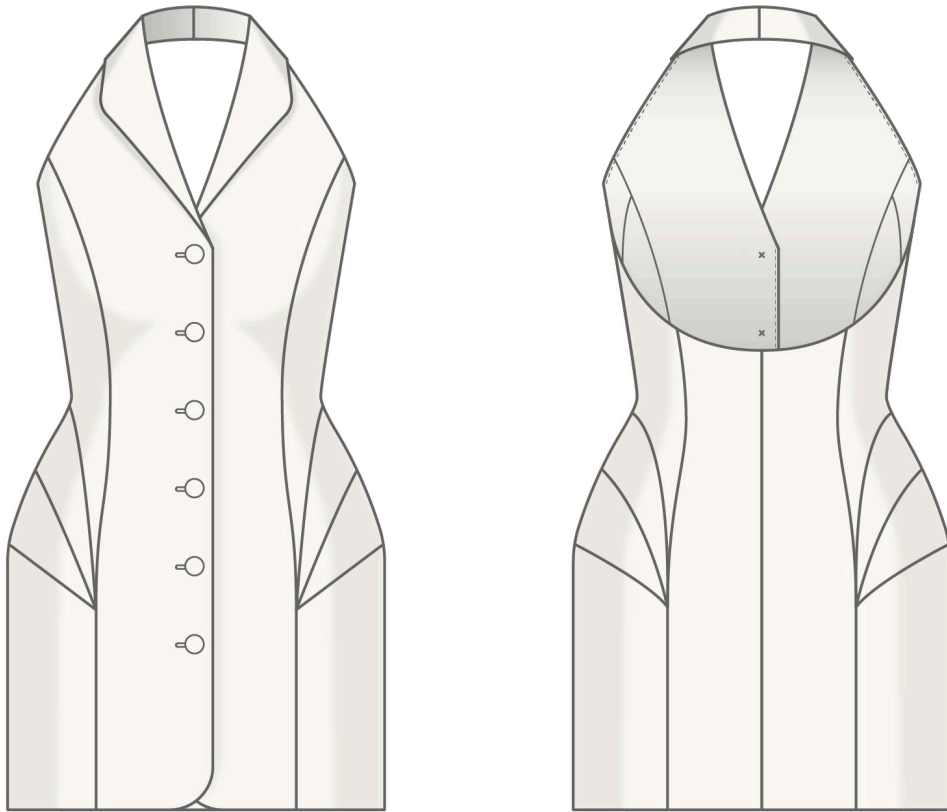


Back in 2016, when I started making my first sewing patterns and instruction manuals, my main goal was to solve the problems I personally faced at the beginning of my sewing journey: the lack of stylish patterns that provide a great fit and contain clear sewing instructions. That's how Vikisews was born—a brand designed to help you create fashionable, on-trend clothing with your own hands.



The sewing instructions we create is the result of our team's careful, meticulous work. May they help you develop your sewing hobby—or even turn it into your life's work! Enjoy every step of the sewing process and create a thoughtful, stylish wardrobe!

If you have any questions, we're always here to help: info@vikisews.com



ALBINA PATTERN DESCRIPTION

Albina is a close-fitting dress with an accentuated waist. The front and back are fitted with princess seams. Below the waist, the dress is sculptured, featuring compound side pieces shaped with bra foam. The dress has a wing collar, cutaway shoulders transitioning into an open back, and a center front button and buttonhole closure. Albina is above-knee length.



PLEASE READ BEFORE USE

The contents of this pattern are copyright protected and belong exclusively to Vikisews. You may use Vikisews patterns for personal use. It is prohibited to share Vikisews patterns and instructions with third parties, as well as to publish patterns and instructions online for public access. **Non-compliance with the mentioned rules is a violation of the US copyright law and may result in civil liability and criminal prosecution.**

You may use Vikisews patterns for commercial use, to sew custom-made garments and/or create fashion collections, on the condition that the patterns are solely used in a manufacturing setting and are not further shared with individuals.

TOTAL EASE ALLOWANCE

	Bust ease (estimated)	Waistline ease	Hipline ease
cm	-3.8 to -3.2	0.8-2	6.3-5.3
inches	-1 1/2 to -1 1/4	3/8-3/4	2 1/2-2 1/8

GARMENT LENGTH

Height, cm	Center back length from waist down, cm	Height, ft	Center back length from waist down, in
1 (154-160)	38.9 - 39.8	1 (5'1"-5'3")	15 3/8-15 5/8
2 (162-168)	40.9 - 41.8	2 (5'4"-5'6")	16 1/8-16 1/2
3 (170-176)	42.9 - 43.8	3 (5'7"-5'9")	16 7/8-17 1/4
4 (178-184)	44.9 - 45.8	4 (5'10"-6'1")	17 5/8-18

SUGGESTED FABRICS

To sew this dress, choose medium-weight, structured, non-stretch or low-stretch, opaque suiting fabrics made of natural, artificial, blended, or synthetic fibers.

The following fabrics are recommended: suiting fabrics, gabardine, jacquard, and denim.

For the lining, choose lining fabrics made of natural fibers (silk), artificial fibers (viscose), or synthetic fibers (polyester), as well as blended fabrics (viscose + polyester, silk + viscose, viscose + elastane).

Attention! We do not recommend stretchy knit fabrics, soft, lightweight, or fabrics with a loose structure.

The dress in the photo is made of suiting fabric. The fabric is medium-weight, pliable, and low-stretch. The fiber content is 87% polyester, 13% acetate. The fabric weight is 325 g/m².

The lining is made of 54% polyester, 46% viscose. The fabric weight is 95 g/m².

FABRIC AND NOTIONS REQUIREMENTS

1. Main fabric, 140 cm wide, with a directional print/nap, in meters:

Height, cm	Size						
	34	36	38	40-44	46	48	50-52
1 (154-160)	1.15	1.2	1.2	1.35	1.45	1.5	1.6
2 (162-168)	1.2	1.2	1.25	1.4	1.5	1.55	1.6
3 (170-176)	1.25	1.25	1.3	1.45	1.55	1.6	1.65
4 (178-184)	1.3	1.3	1.35	1.5	1.6	1.65	1.7

Main fabric, 55" wide, with a directional print/nap, in yards:

Height, ft	Size					
	34-36	38	40-44	46	48	50-52
1 (5'1"-5'3")	1 1/4	1 1/4	1 1/2	1 5/8	1 5/8	1 3/4
2 (5'4"-5'6")	1 1/4	1 3/8	1 1/2	1 5/8	1 3/4	1 3/4
3 (5'7"-5'9")	1 3/8	1 3/8	1 5/8	1 3/4	1 3/4	1 3/4
4 (5'10"-6'1")	1 3/8	1 1/2	1 5/8	1 3/4	1 3/4	1 7/8

2. Lining fabric, 140 cm wide, with a directional print, in meters:

Height, cm	Size					
	34	36-38	40-42	44	46	48-52
1 (154-160)	0.5	0.55	0.65	0.65	0.7	0.7
2 (162-168)	0.5	0.55	0.65	0.7	0.7	0.75
3 (170-176)	0.55	0.6	0.7	0.7	0.7	0.75
4 (178-184)	0.55	0.6	0.7	0.75	0.75	0.8

Lining fabric, 55" wide, with a directional print, in yards:

Height, ft	Size				
	34	36-38	40-42	44-46	48-52
1 (5'1"-5'3")	1/2	5/8	3/4	3/4	3/4
2 (5'4"-5'6")	1/2	5/8	3/4	3/4	7/8
3 (5'7"-5'9")	5/8	5/8	3/4	3/4	7/8
4 (5'10"-6'1")	5/8	5/8	3/4	7/8	7/8

3. Bra foam, 3 mm (1/8") thick, for all sizes in all heights — 50 by 50 cm (20" by 20") square cut.

***IMPORTANT!** When purchasing fabric, please account for shrinkage and buy 5% more than required.*

4. Lightweight interfacing, knit or woven, 140 cm wide, for all sizes in all heights, cut in one direction, in meters:

Height, cm	Size					
	34	36	38	40-44	48	50-52
1 (154-160)	1.15	1.2	1.2	1.35	1.45	1.6
2 (162-168)	1.2	1.2	1.25	1.4	1.5	1.6
3 (170-176)	1.25	1.25	1.3	1.45	1.55	1.65
4 (178-184)	1.3	1.3	1.35	1.5	1.6	1.7

Lightweight interfacing, knit or woven, 55" wide, for all sizes in all heights, cut in one direction, in yards:

Height, ft	Size					
	34	36	38	40-44	48	50-52
1 (5'1"-5'3")	1 1/4	1 1/4	1 1/4	1 1/2	1 5/8	1 3/4
2 (5'4"-5'6")	1 1/4	1 1/4	1 3/8	1 1/2	1 5/8	1 3/4
3 (5'7"-5'9")	1 3/8	1 3/8	1 3/8	1 5/8	1 3/4	1 3/4
4 (5'10"-6'1")	1 3/8	1 3/8	1 1/2	1 5/8	1 3/4	1 7/8

5. Bias-cut fusible stay tape with stitch reinforcement, 1.5 cm (5/8") wide — 3.3-3.8 m (3 5/8-4 1/8 yd).

6. Six buttons, 1.8-2 cm (3/4") in diameter.

7. Matching thread — 1 spool for the sewing machine.

TOOLS AND EQUIPMENT

- sewing machine for construction
- buttonhole foot for the sewing machine
- stitch-in-the-ditch foot for the sewing machine (optional)

PATTERN PIECES LIST

1. From main fabric:

- top edge facing – cut 2
- front facing – cut 2
- top side front – cut 2
- top side back – cut 2
- center front – cut 2
- center back – cut 2
- top side – cut 2
- mid side – cut 2
- bottom side – cut 2

2. From interfacing:

- top edge facing – cut 2
- front facing – cut 2
- top side front – cut 2
- top side back – cut 2
- center front – cut 2
- center back – cut 2
- top side – cut 2
- mid side – cut 2
- bottom side – cut 2

3. From lining:

- center back lining – cut 2
- top side back lining – cut 2
- top side front lining – cut 2
- top side – cut 2
- mid side – cut 2
- bottom side – cut 2

***IMPORTANT!** Don't forget to transfer all pattern markings and notches onto the fabric.*

4. From foam:

- top side – cut 2
- mid side – cut 2

SEAM ALLOWANCES

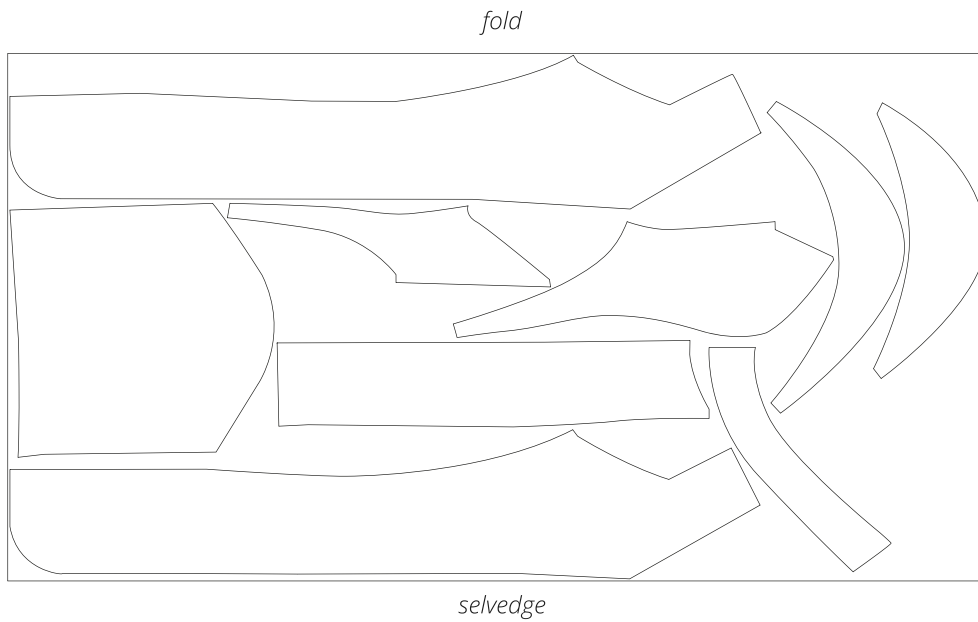
All pattern pieces include seam allowances as follows:

- garment hem allowance — 4 cm (1 5/8")
- all other edges — 1 cm (3/8")

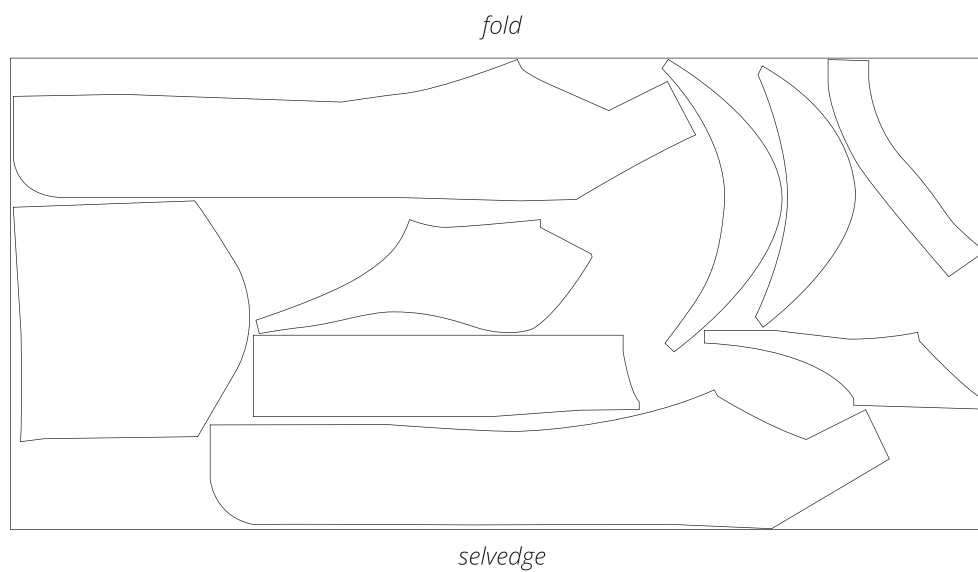
Take this into account when laying out the pattern pieces on the fabric.

CUTTING LAYOUT

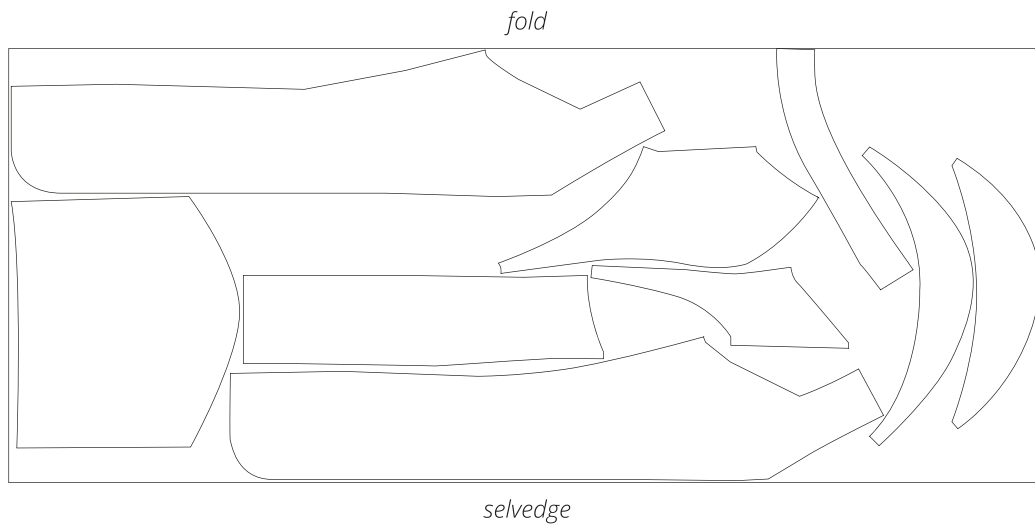
Main fabric, 140 cm (55") wide, with a directional print/nap, cut on fold,
for sizes 34–38 in all heights



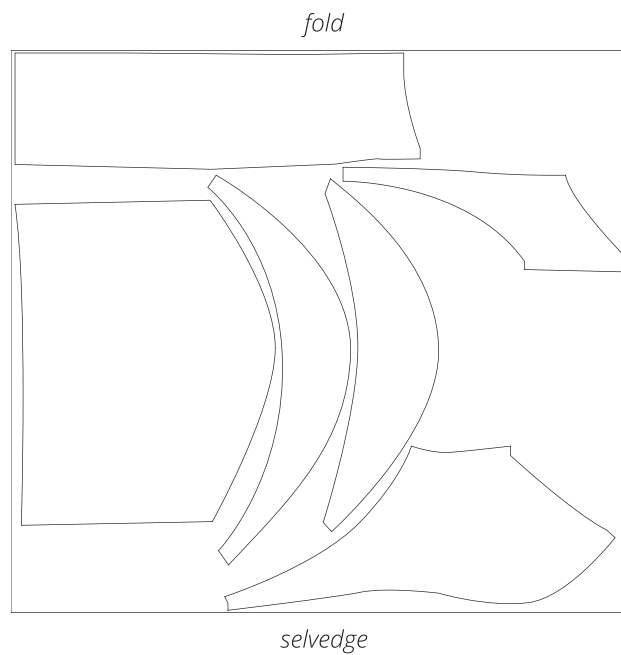
Main fabric, 140 cm (55") wide, with a directional print/nap, cut on fold,
for sizes 40–42 in all heights



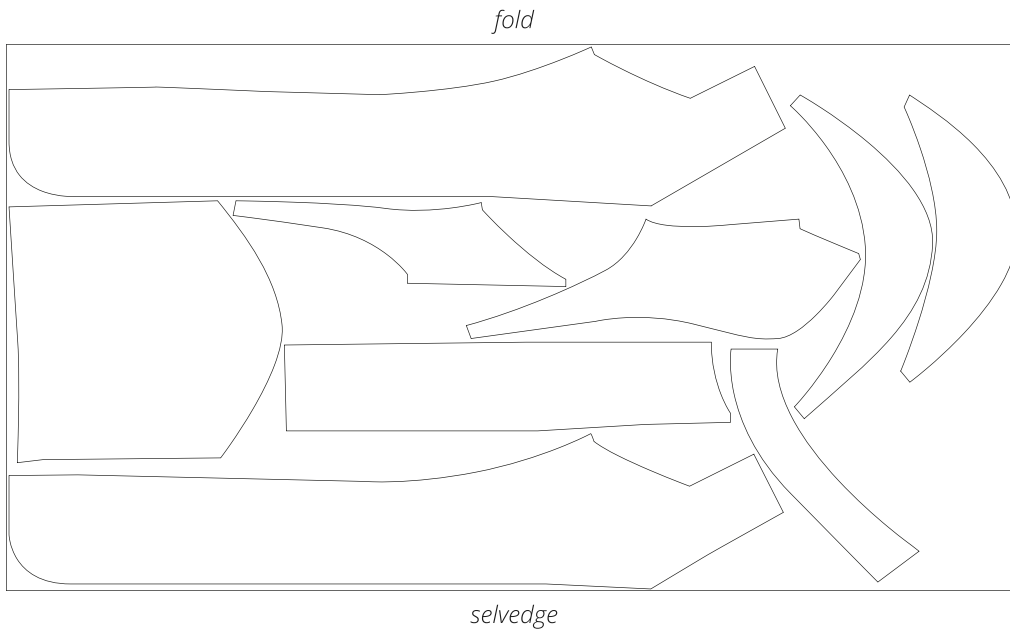
Main fabric, 140 cm (55") wide, with a directional print/nap, cut on fold,
for sizes 44-52 in all heights



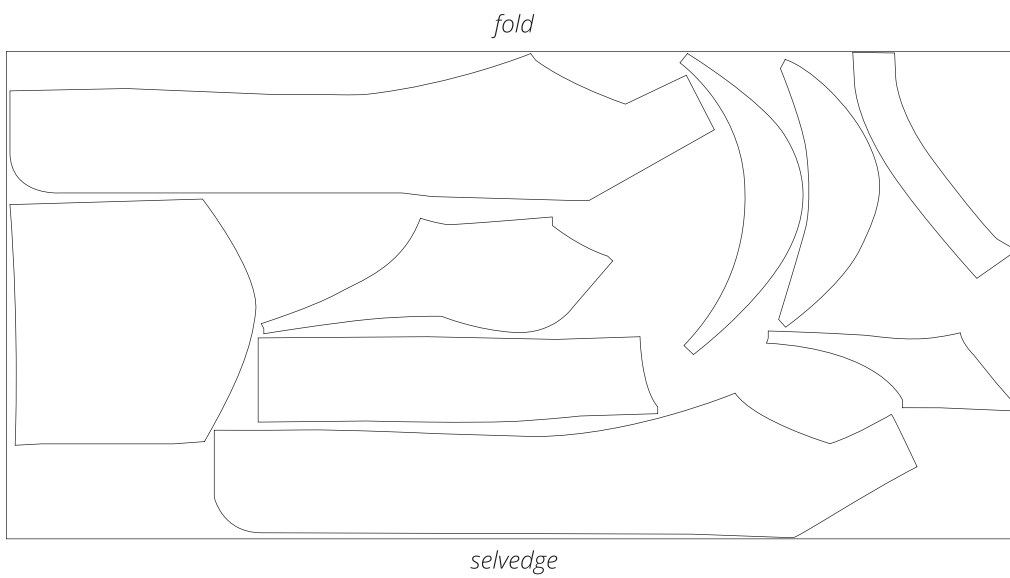
Lining fabric, 140 cm (55") wide, with a directional print, cut on fold,
for all sizes in all heights



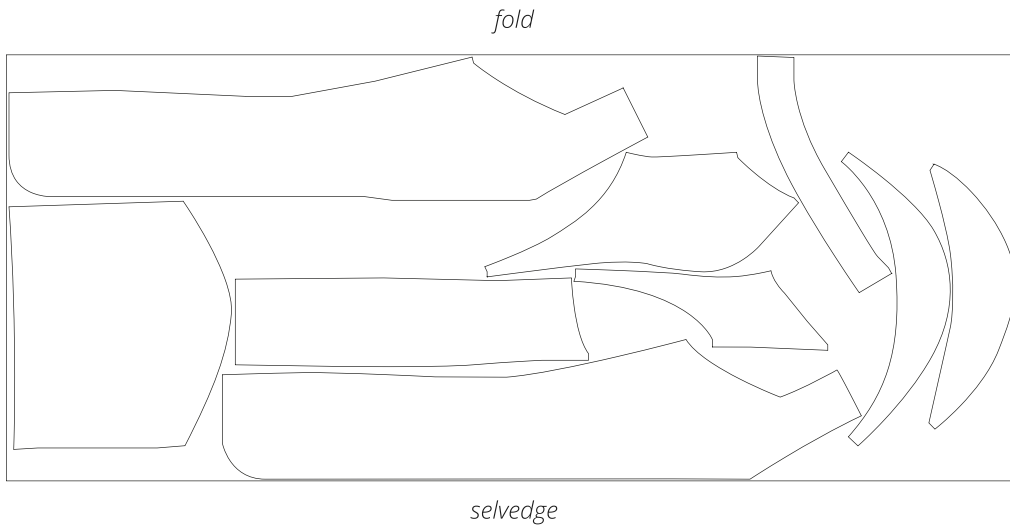
Interfacing, 140 cm (55") wide, cut on fold and in one direction,
for sizes 34–38 in all heights



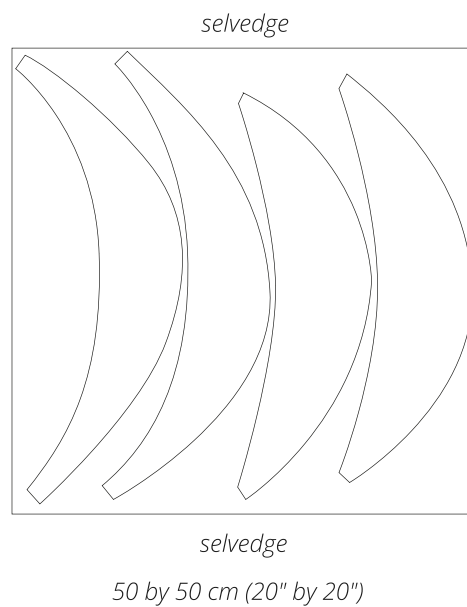
Interfacing, 140 cm (55") wide, cut on fold and in one direction,
for sizes 40–42 in all heights



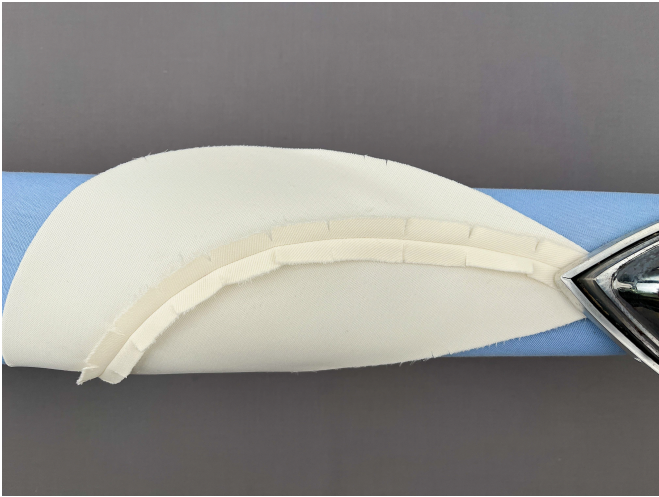
Interfacing, 140 cm (55") wide, cut on fold and in one direction,
for sizes 44-52 in all heights



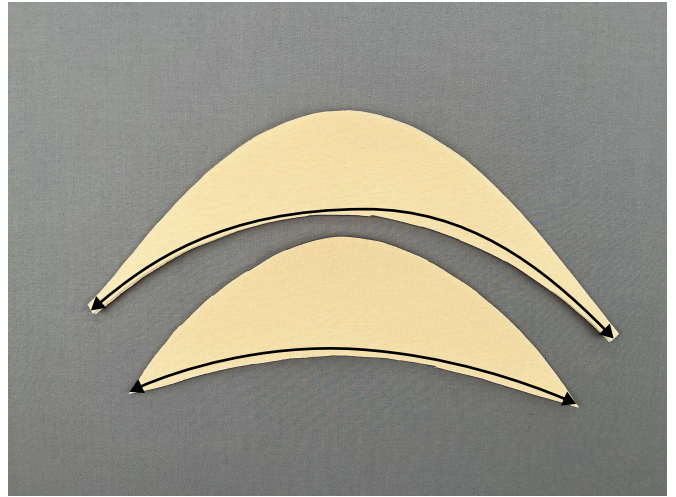
Bra foam, 50 by 50 cm (20" by 20"), cut on a single layer,
for all sizes in all heights



READY? LET'S GET SEWING!

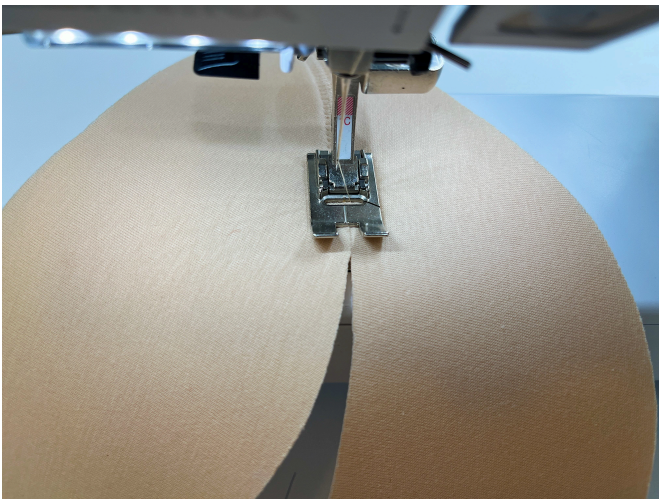


6. Press the seam allowances open.



7. Trim the seam allowances on the foam pieces as follows:

- bottom seam allowance on the top side piece;
- top seam allowance on the mid side piece.



8. Place the top side and mid side foam pieces with the shaped edges touching, matching the notches. Machine-stitch using a zigzag stitch (stitch length 1.5 mm, stitch width 5 mm).



9. Steam-press the assembled foam side piece.