

FROM THE FOUNDER OF THE VIKISEWS® BRAND

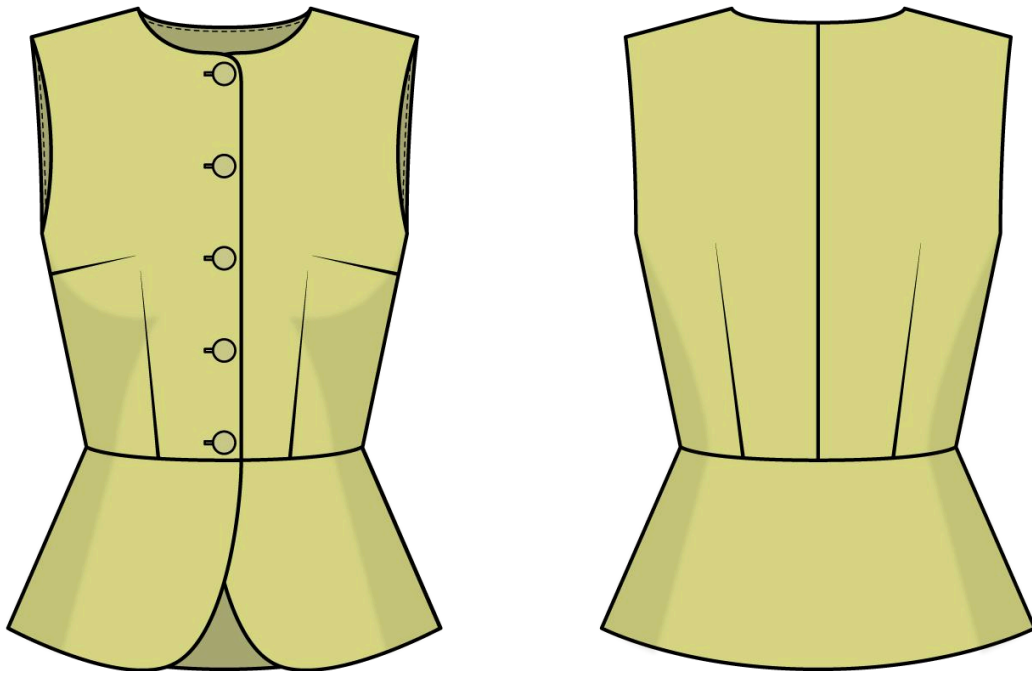


Back in 2016, when I started making my first sewing patterns and instruction manuals, my main goal was to solve the problems I personally faced at the beginning of my sewing journey: the lack of stylish patterns that provide a great fit and contain clear sewing instructions. That's how Vikisews was born—a brand designed to help you create fashionable, on-trend clothing with your own hands.



The sewing instructions we create is the result of our team's careful, meticulous work. May they help you develop your sewing hobby—or even turn it into your life's work! Enjoy every step of the sewing process and create a thoughtful, stylish wardrobe!

If you have any questions, we're always here to help: info@vikisews.com



RIMMA PATTERN DESCRIPTION

Rimma is a semi-fitted vest with an accentuated waist. The front and back are fitted with bust and waist darts. The back features a center seam. The neckline is round. The vest closes with buttons and buttonholes at the center front and has a two-layer peplum attached along the waistline. Rimma is above-hip length.



PLEASE READ BEFORE USE

The contents of this pattern are copyright protected and belong exclusively to Vikisews. You may use Vikisews patterns for personal use. It is prohibited to share Vikisews patterns and instructions with third parties, as well as to publish patterns and instructions online for public access. **Non-compliance with the mentioned rules is a violation of the US copyright law and may result in civil liability and criminal prosecution.**

You may use Vikisews patterns for commercial use, to sew custom-made garments and/or create fashion collections, on the condition that the patterns are solely used in a manufacturing setting and are not further shared with individuals.

TOTAL EASE ALLOWANCE

	Bust ease	Waistline ease
cm	6.8–7.3	8–9.3
inches	2 5/8–2 7/8	3 1/8–3 5/8

GARMENT LENGTH

Height, cm	Garment length from waist down, cm	Height, ft	Garment length from waist down, in
1 (154–160)	14–16.7	1 (5'1"–5'3")	5 1/2–6 5/8
2 (162–168)	14.6–17.2	2 (5'4"–5'6")	5 3/4–6 3/4
3 (170–176)	15–17.7	3 (5'7"–5'9")	5 7/8–7
4 (178–184)	15.5–18.2	4 (5'10"–6'1")	6 1/8–7 1/8

SUGGESTED FABRICS

To sew this vest, choose soft, non-stretch or low-stretch, medium-weight suiting fabrics made of natural, artificial, blended, or synthetic fibers.

The following fabrics are recommended: silk crepe suiting, gabardine, polyviscose suiting.

Important! We do not recommend using stretchy or sheer fabrics.

The vest in the photo is made of crepe suiting. The fabric is medium weight, soft, and low-stretch. The fiber content is 97% viscose and 3% elastane. The fabric weight is 210 g/m².

FABRIC AND NOTIONS REQUIREMENTS

1. Main fabric, 140 cm wide, with a directional print/nap, in meters:

Height, cm	Size									
	34	36	38	40	42	44	46	48	50	52
1 (154–160)	1	1.05	1.1	1.15	1.15	1.2	1.25	1.3	1.35	1.45
2 (162–168)	1	1.05	1.1	1.15	1.15	1.2	1.25	1.3	1.4	1.45
3 (170–176)	1.05	1.1	1.15	1.15	1.2	1.25	1.25	1.3	1.45	1.5
4 (178–184)	1.05	1.1	1.15	1.2	1.2	1.25	1.3	1.4	1.45	1.5

Main fabric, 55" wide, with a directional print/nap, in yards:

Height, ft	Size									
	34	36	38	40	42	44	46	48	50	52
1 (5'1"–5'3")	1 1/8	1 1/8	1 1/4	1 1/4	1 1/4	1 1/4	1 1/4	1 3/8	1 1/2	1 5/8
2 (5'4"–5'6")	1 1/8	1 1/8	1 1/4	1 1/4	1 1/4	1 1/4	1 3/8	1 3/8	1 1/2	1 5/8
3 (5'7"–5'9")	1 1/8	1 1/4	1 1/4	1 1/4	1 1/4	1 1/4	1 3/8	1 1/2	1 5/8	1 5/8
4 (5'10"–6'1")	1 1/8	1 1/4	1 1/4	1 1/4	1 1/4	1 3/8	1 3/8	1 1/2	1 5/8	1 5/8

2. Lining fabric, 140 cm (55") wide, with a directional print, for all sizes in all heights — 0.4 m (7/8 yd).

3. Lightweight interfacing, knit or woven, 140 cm wide, in meters:

Height, cm	Size							
	36	36	38	44	46	48	50	52
1 (154–160)	1	1.05	1.1	1.2	1.25	1.3	1.35	1.4
2 (162–168)	1	1.05	1.1	1.2	1.25	1.3	1.4	1.45
3 (170–176)	1.05	1.1	1.15	1.25	1.3	1.35	1.45	1.5
4 (178–184)	1.05	1.1	1.15	1.25	1.3	1.4	1.45	1.5

Lightweight interfacing, knit or woven, 55" wide, for all heights, in yards:

Height, ft	Size							
	34	36	38-42	44	46	48	50	52
1 (5'1"-5'3")	1 1/8	1 1/8	1 1/4	1 1/4	1 3/8	1 3/8	1 1/2	1 1/2
2 (5'4"-5'6")	1 1/8	1 1/8	1 1/4	1 1/4	1 3/8	1 3/8	1 1/2	1 5/8
3 (5'7"-5'9")	1 1/8	1 1/4	1 1/4	1 3/8	1 3/8	1 1/2	1 5/8	1 5/8
4 (5'10"-6'1")	1 1/8	1 1/4	1 1/4	1 3/8	1 3/8	1 1/2	1 5/8	1 5/8

IMPORTANT! When purchasing fabric, please account for shrinkage and buy 5% more than required.

4. Stitched bias-cut fusible stay tape with stitch reinforcement, 1.5 cm (5/8") wide — 2.1–2.6 m (2 1/4–2 7/8 yd)

5. Five buttons, 15–18 mm (5/8–3/4") in diameter

6. Matching thread — 1 spool for the sewing machine

TOOLS AND EQUIPMENT

- sewing machine for construction
- buttonhole foot for the sewing machine
- stitch-in-the-ditch foot for the sewing machine (optional)

PATTERN PIECES LIST

1. From main fabric:

- front — cut 2
- back — cut 2
- front peplum — cut 2
- back peplum — cut 1 on fold
- bottom front peplum — cut 2
- bottom back peplum — cut 1 on fold
- front facing — cut 2
- back facing — cut 1

IMPORTANT! Don't forget to transfer all pattern markings and notches onto the fabric.

2. From lining fabric:

- front lining — cut 2
- back lining — cut 1 on fold

3. From interfacing:

- front facing — cut 2
- back facing — cut 1

***IMPORTANT!** Don't forget to transfer all pattern markings and notches onto the fabric.*

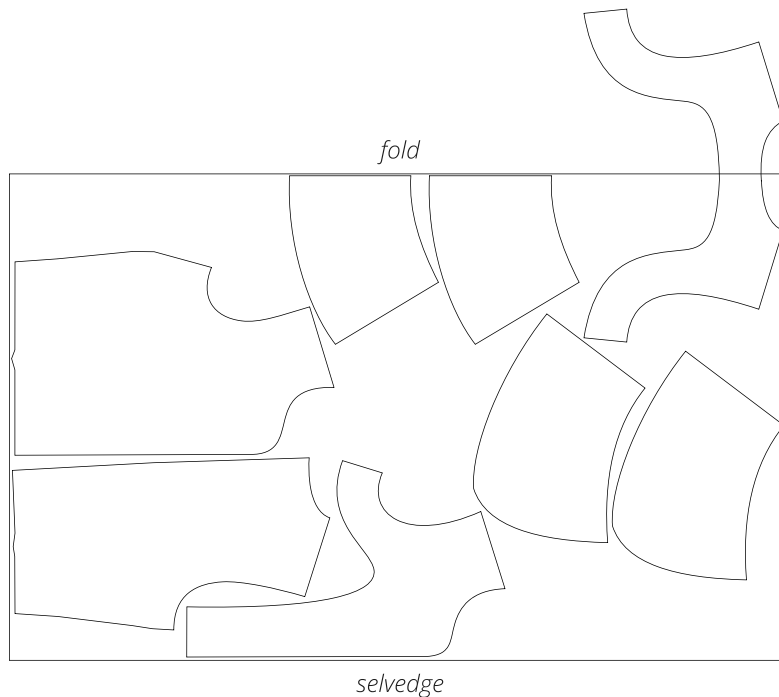
SEAM ALLOWANCES

All pattern pieces include 1 cm (3/8") seam allowances.

Take this into account when laying out the pattern pieces on the fabric.

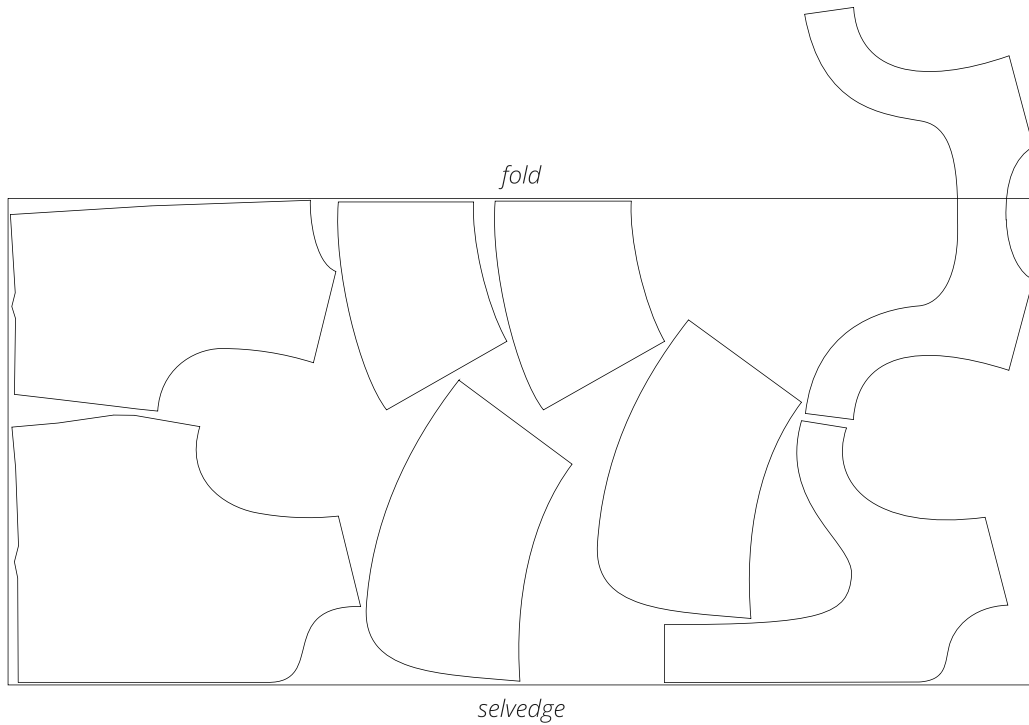
CUTTING LAYOUT

Main fabric and Interfacing material, 140 cm (55") wide, with a directional print/nap, cut on fold, for sizes 34–42 in all heights



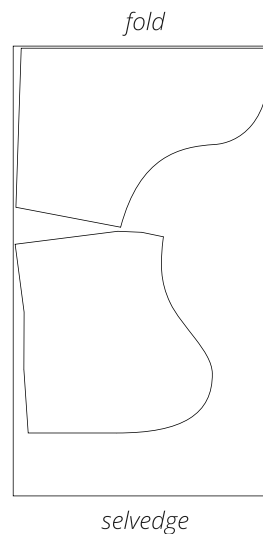
Attention! Cut only one back facing piece on a single layer out of the leftover fabric.

Main fabric and Interfacing material, 140 cm (55") wide, with a directional print/nap, cut on fold, for sizes 44–52 in all heights



Attention! Cut only one back facing piece on a single layer out of the leftover fabric.

Lining fabric, 140 cm (55") wide,
with a directional print, cut on fold,
for all sizes in all heights



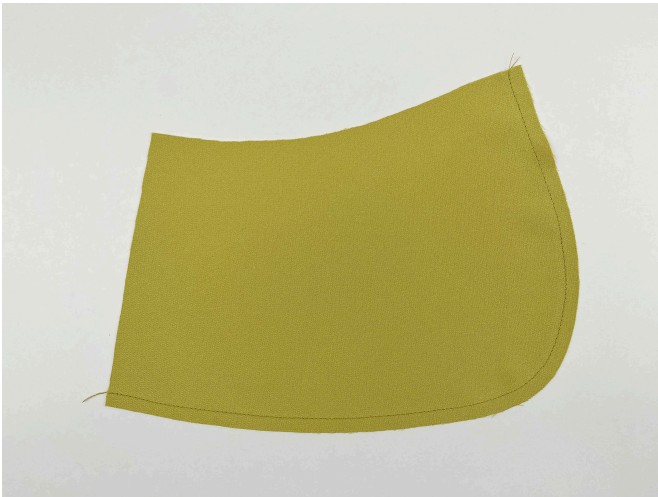
READY? LET'S GET SEWING!



7. Place the back pieces right sides together. Align the center edges and pin. Machine-stitch, backstitching at the beginning and end of the seam.



8. Press the center back seam allowances open.



9. Staystitch at 8 mm (just under 3/8") from the front and bottom edges of the front peplum piece. Use matching thread. Do not backstitch.



10. Staystitch at 8 mm (just under 3/8") from the bottom edge of the back peplum piece. Use matching thread. Do not backstitch.



11. Place the back peplum piece and the assembled back piece right sides together. Align the waist edges, match the notches, and pin.