

FROM THE FOUNDER OF THE VIKISEWS® BRAND

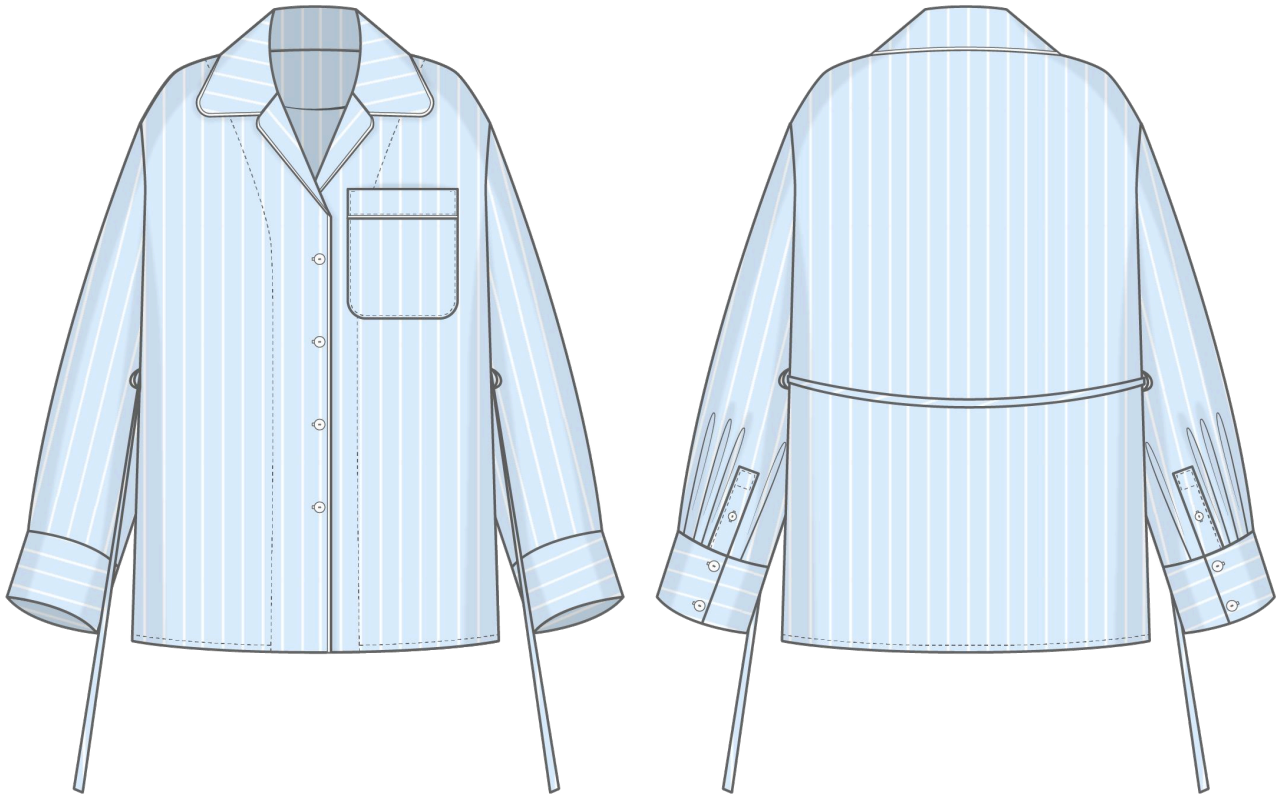


Back in 2016, when I started making my first sewing patterns and instruction manuals, my main goal was to solve the problems I personally faced at the beginning of my sewing journey: the lack of stylish patterns that provide a great fit and contain clear sewing instructions. That's how Vikisews was born—a brand designed to help you create fashionable, on-trend clothing with your own hands.



The sewing instructions we create is the result of our team's careful, meticulous work. May they help you develop your sewing hobby—or even turn it into your life's work! Enjoy every step of the sewing process and create a thoughtful, stylish wardrobe!

If you have any questions, we're always here to help: info@vikisews.com



VENLA PATTERN DESCRIPTION

Venla is a loose-fitting blouse with a straight silhouette. The front has a patch pocket with an applied facing decorated with piping. The blouse has drop shoulders, deep armholes, and long shirt sleeves. At the bottom, the sleeves have plackets closing with buttons and buttonholes, as well as wide cuffs. The cuffs close with buttons and buttonholes. The blouse has a notched turn-down collar and a center front button and buttonhole closure. The front edges are finished with front facings. The collar, lapel, and front edges are decorated with piping. The side seams have loops for the detachable tie belt. Venla is below-hip length.



PLEASE READ BEFORE USE

The contents of this pattern are copyright protected and belong exclusively to Vikisews. You may use Vikisews patterns for personal use. It is prohibited to share Vikisews patterns and instructions with third parties, as well as to publish patterns and instructions online for public access. **Non-compliance with the mentioned rules is a violation of the US copyright law and may result in civil liability and criminal prosecution.**

You may use Vikisews patterns for commercial use, to sew custom-made garments and/or create fashion collections, on the condition that the patterns are solely used in a manufacturing setting and are not further shared with individuals.

TOTAL EASE ALLOWANCE

	Bust ease	Waistline ease	Hipline ease	Upper arm ease
cm	54.7–46.2	74.7–66.3	48.7–40.5	26.1–21.1
inches	21 1/2–18 1/4	29 3/8–26 1/8	19 1/8–16	10 1/4–8 1/4

GARMENT LENGTH, SLEEVE LENGTH

Height, cm	Back length, cm	Sleeve length including shoulder width and cuff, cm
1 (154–160)	71.5	78.9–82.9
2 (162–168)	74.5	80.8–84.8
3 (170–176)	77.5	82.7–86.7
4 (178–184)	80.5	84.6–88.6

Height, ft	Back length, in	Sleeve length including shoulder width and cuff, in
1 (5'1"–5'3")	28 1/8	31 1/8–32 5/8
2 (5'4"–5'6")	29 3/8	31 3/4–33 3/8
3 (5'7"–5'9")	30 1/2	32 1/2–34 1/8
4 (5'10"–6'1")	31 3/4	33 1/4–34 7/8

SUGGESTED FABRICS

To sew this blouse, choose medium-weight, pliable, non-stretch or low-stretch, opaque shirting fabrics made of natural, artificial, blended, or synthetic fibers.

The following fabrics are recommended: cotton, batiste, poplin, dress-weight denim, ramie, and linen.

Attention! We do not recommend stretchy knit fabrics or lightweight and sheer fabrics (chiffon, organza, stretch lace).

The blouse in the photo is made of shirting cotton. The fabric is medium weight, pliable, soft, and non-stretch. The fiber content is 100% cotton. The fabric weight is 140 g/m².

FABRIC AND NOTIONS REQUIREMENTS

1. Main fabric, 140 cm wide, with a directional print/nap, in meters:

Height, cm	Size								
	34	36	38	40	42	44-46	48	50	52
1 (154-160)	2.2	2.2	2.25	2.25	2.3	2.3	2.35	2.5	2.55
2 (162-168)	2.3	2.3	2.3	2.35	2.35	2.4	2.4	2.55	2.6
3 (170-176)	2.35	2.4	2.4	2.4	2.45	2.45	2.5	2.65	2.7
4 (178-184)	2.45	2.45	2.5	2.5	2.5	2.55	2.55	2.7	2.75

Main fabric, 55" wide, with a directional print/nap, in yards:

Height, ft	Size					
	34-36	38	40-46	48	50	52
1 (5'1"-5'3")	2 3/8	2 1/2	2 1/2	2 5/8	2 3/4	2 3/4
2 (5'4"-5'6")	2 1/2	2 1/2	2 5/8	2 5/8	2 3/4	2 7/8
3 (5'7"-5'9")	2 5/8	2 5/8	2 5/8	2 3/4	2 7/8	3
4 (5'10"-6'1")	2 5/8	2 3/4	2 3/4	2 3/4	3	3

2. Lightweight interfacing, knit or woven, 140 cm wide, for all sizes in all heights, cut in one direction, in meters:

Size	34-36	38	40-42	44	46-48	50-52
meters	1.8	1.85	1.9	1.95	2	2.05

Main fabric, 55" wide, with a directional print/nap, in yards:

Size	34-38	40-48	50-52
yards	2	2 1/8	2 1/4

2. Lightweight interfacing, knit or woven, 140 cm (55") wide, cut in one direction, for all heights:

Size	34-36	38	40-42	44	46-48	50-52
meters	1.8	1.85	1.9	1.95	2	2.05
yards	2	2	2 1/8	2 1/8	2 1/8	2 1/4

IMPORTANT! To save material, the interfacing for the tie belt can be cut in two pieces (divide the required length in half).

3. Stitched bias-cut fusible stay tape with stitch reinforcement, 1.5 cm (5/8") wide — 1.6–1.8 m (1 3/4–2 yd).

4. Cotton piping with cord, in meters:

Size	34	36	38	40	42	46	48	50–52
meters	2.35	2.4	2.45	2.5	2.55	2.65	2.7	2.75

Cotton piping with cord, in yards:

Size	34–38	40–42	44–46	48–52
yards	2 5/8	2 3/4	2 7/8	3

IMPORTANT! When purchasing fabric, please account for shrinkage and buy 5% more than required.

4. Cotton piping with cord:

Size	34	36	38	40	42	44	46	48	50
meters	2.35	2.4	2.45	2.5	2.55	2.6	2.65	2.7	2.75
yards	2 5/8	2 5/8	2 5/8	2 3/4	2 3/4	2 7/8	2 7/8	3	3

5. Eight buttons, 15 mm (5/8") in diameter

6. Two buttons, 10 mm (3/8") in diameter

7. Matching thread — 1 spool for the sewing machine.

TOOLS AND EQUIPMENT

- sewing machine for construction
- buttonhole foot for the sewing machine
- stitch-in-the-ditch foot for the sewing machine (optional)
- one-sided foot for the sewing machine
- loop turner

PATTERN PIECES LIST

1. From main fabric:

- front — cut 2
- back — cut 1 on fold
- sleeve — cut 2
- upper collar — cut 1
- undercollar — cut 1
- cuff — cut 2
- pocket — cut 1
- pocket facing — cut 1
- front facing — cut 2
- tie belt — cut 1
- sleeve placket — cut 2
- belt loops — cut 1 (2 pcs)

***IMPORTANT!** Don't forget to transfer all pattern markings and notches onto the fabric.*

2. From interfacing:

- upper collar — cut 1
- undercollar — cut 1
- cuff — cut 2
- pocket facing — cut 1
- front facing — cut 2
- tie belt — cut 1
- sleeve placket — cut 2

SEAM ALLOWANCES

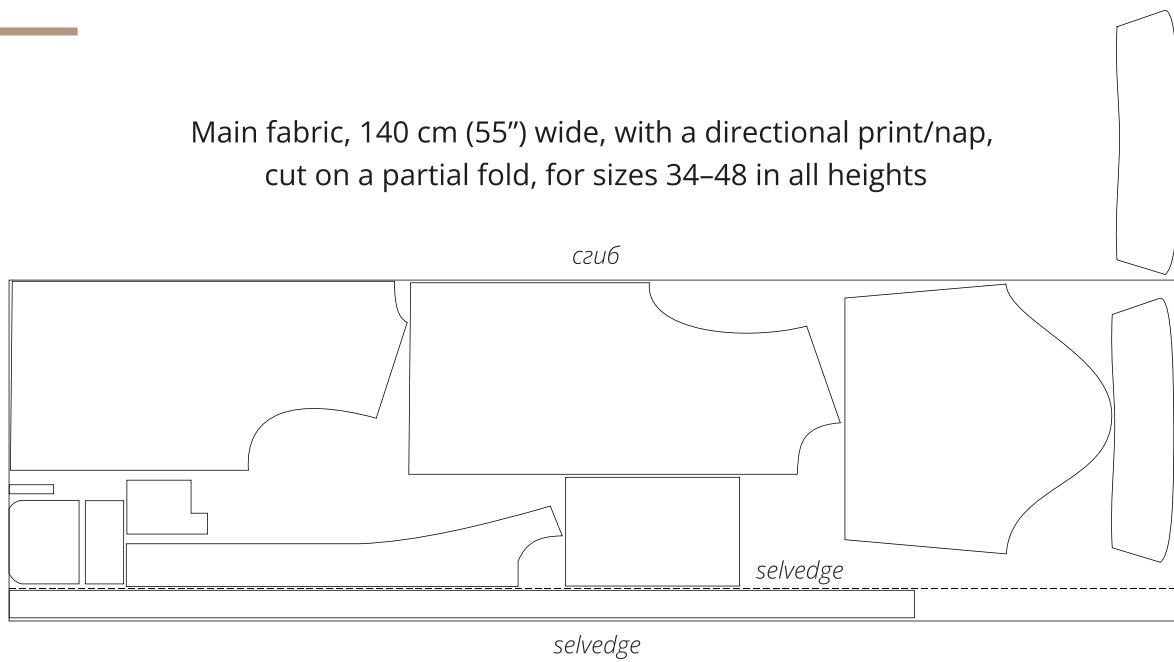
All pattern pieces include seam allowances as follows:

- garment hem allowance — 2 cm (3/4")
- all other edges — 1 cm (3/8")

Take this into account when laying out the pattern pieces on the fabric.

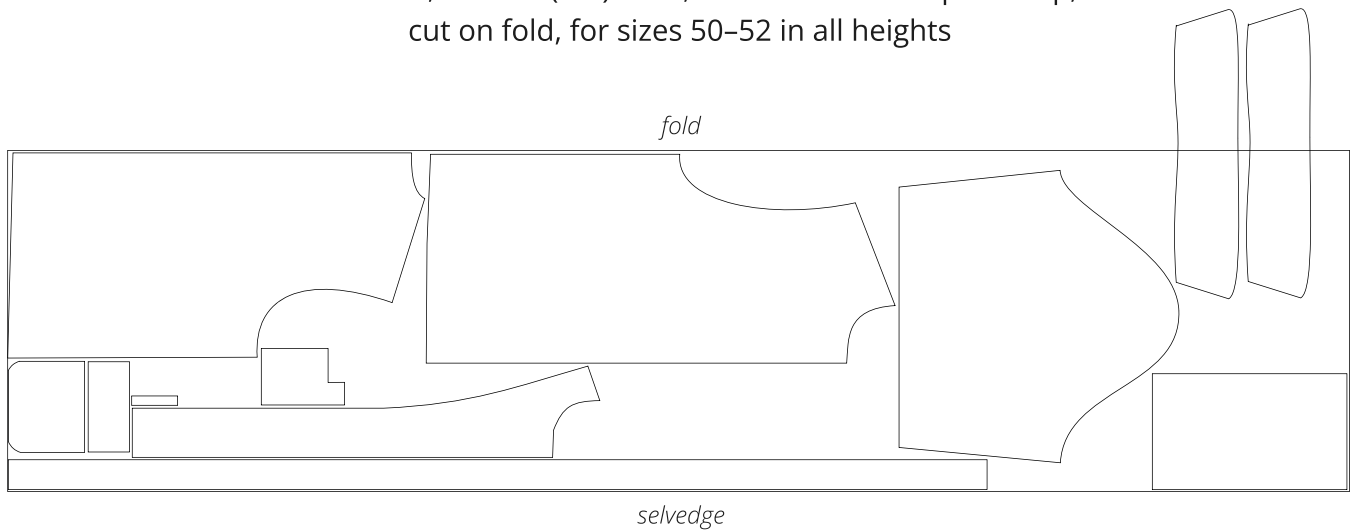
CUTTING LAYOUT

Main fabric, 140 cm (55") wide, with a directional print/nap, cut on a partial fold, for sizes 34–48 in all heights

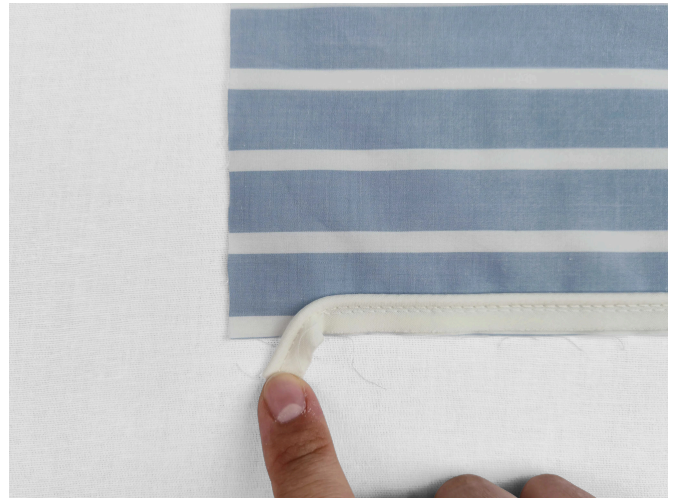


Important! Cut one each of the upper collar, pocket and pocket facing pieces.
Cut only one undercollar piece on a single layer out of the leftover fabric.

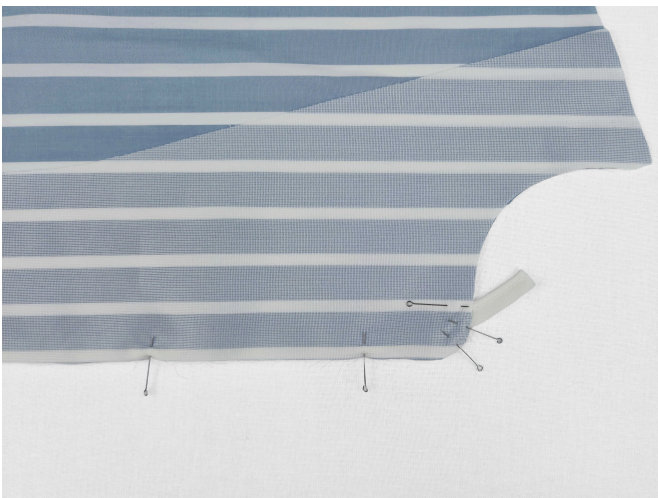
Main fabric, 140 cm (55") wide, with a directional print/nap, cut on fold, for sizes 50–52 in all heights



Important! Cut the undercollar and upper collar pieces on a single layer out of the leftover fabric.
Cut one each pocket and pocket facing pieces.



3. Machine-stitch the piping. Using a one-sided foot, stitch close to the cord from the neckline notch to the hem allowance notch. Backstitch at the beginning and end of the seam.



4. Place the front facing and front pieces right sides together. Align the edges, match the notches, and pin. Fold the free ends of the piping at the hem allowance and neckline reference points at an angle, and pin.



5. Machine-stitch right over the piping seam from the hem allowance notch to the neckline notch. Backstitch at the beginning and end of the seam. Press the seam flat.