

FROM THE FOUNDER OF THE #VIKISEWS BRAND



Back in 2016, when I was working on my first set of sewing instructions, I was trying to write them in such a way that even a complete beginner could easily understand and use them to create their very first garment. These instructions laid the foundation for the Vikisews brand, its vision and its mission. I wanted to create modern patterns with the most detailed and clear instructions.

Now, with each new collection we are constantly improving our instructions, amending them and adding more relevant details. By the time the final product reaches you, our drafters, correctors, and editors would have spent weeks perfecting every word and every photograph. If you compile a few of our instructions together, you will get a sewing manual that will assist you in sewing all kinds of garments at any difficulty level.

And I would be very happy if these instructions helped you to turn your hobby into a lifelong passion... Enjoy the process! Create your ultimate dream wardrobe! Wear your garments proudly for years to come!

If you have any questions, please contact us at info@vikisews.com - we are always there to help.



MEL PATTERN DESCRIPTION

Mel is a pair of semi-fitted shorts with a straight silhouette. There are pockets in the side seams. The grown-on elasticated waistband has stitched buttonholes for threading a decorative drawstring. The shorts are knee-length.



IMPORTANT!

The contents of this pattern are copyright protected and belong exclusively to Vikisews. You may use Vikisews patterns for personal use. It is prohibited to share Vikisews patterns and instructions with third parties, as well as to publish patterns and instructions online for public access. **Non-compliance with the mentioned rules is a violation of the US copyright law and may result in civil liability and criminal prosecution.**

You may use Vikisews patterns for commercial use, to sew custom-made garments and/or create fashion collections, on the condition that the patterns are solely used in a manufacturing setting and are not further shared with individuals.

TOTAL EASE ALLOWANCE

	Waistline ease	Hipline ease
cm	16.9–24	7.5–7.8
inches	6 5/8–9 1/2	1 1/8–1 1/2

GARMENT LENGTH

Height, cm	Side seam length including waistband, cm	Height, ft	Side seam length including waistband, in
1 (170–176)	51.4–56.1	1 (5'7"–5'9")	20 1/4–22 1/8
2 (178–184)	53.4–58	2 (5'10"–6')	21–22 7/8
3 (186–192)	55.4–60	3 (6'1"–6'3")	21 3/4–23 5/8
4 (194–200)	57.4–62	4 (6'4"–6'7")	22 5/8–24 3/8

FINISHED HEM WIDTH

Height, cm	Hem width for all sizes, cm	Height, ft	Hem width for all sizes, in
1 (170–176)	30–34.6	1 (5'7"–5'9")	11 3/4–13 5/8
2 (178–184)	30.1–34.7	2 (5'10"–6')	11 7/8–13 5/8
3 (186–192)	30.1–34.7	3 (6'1"–6'3")	11 7/8–13 5/8
4 (194–200)	30.2–34.8	4 (6'4"–6'7")	11 7/8–13 3/4

SUGGESTED FABRIC

To sew these shorts, choose knit fabrics with the following properties:

- non-stretch or low-stretch, medium-weight
- the fiber content can include natural fibers (wool, cotton), artificial fibers (viscose), blended fibers (wool + polyester, cotton + polyester, cotton + elastane, etc.), and synthetic fibers (polyester, polyester + elastane)
- the following fabrics are recommended: thick French terry and lighter weight sweatshirting.

Attention! We do not recommend stretchy knit fabrics.

The shorts in the photo are made of loop-back French terry. The fabric is heavyweight, low-stretch, and structured. The fiber content is 100% cotton. The fabric weight is 400 g/m².

FABRIC AND NOTIONS REQUIREMENTS

1. Main fabric, 160–180 cm wide, in meters:

Height, cm	Size			
	38–42	44–46	48–52	54
1 (170–176)	0.9	1	1	1.05
2 (178–184)	0.95	1	1.05	1.05
3 (186–192)	0.95	1.05	1.05	1.1
4 (194–200)	1	1.05	1.1	1.1

Main fabric, 63–71" wide, in yards:

Height, ft	Size			
	38–42	44–46	48–52	54
1 (5'7"–5'9")	1	1 1/8	1 1/8	1 1/8
2 (5'10"–6')	1	1 1/8	1 1/8	1 1/8
3 (6'1"–6'3")	1	1 1/8	1 1/8	1 1/4
4 (6'4"–6'7")	1 1/8	1 1/8	1 1/4	1 1/4

IMPORTANT! When purchasing fabric, please account for shrinkage and buy 5% more than required.

2. Elastic, 4.5 cm (1 3/4") wide — 70.4–99.2 cm (27 3/4–39") long, depending on the size. The exact elastic length is specified in the pattern
3. Stitched straight-grain fusible stay tape, for all sizes and heights — 0.9 m (1 yd)
4. Cotton cord, 1 cm (3/8") wide — 156–188 cm (61 3/8–74") long, depending on the size. The exact cord length is specified in the pattern
5. Matching thread — 5 spools (1 spool for the sewing machine + 4 spools for the overlocker)

TOOLS AND EQUIPMENT

- sewing machine for construction
- overlocker for stitching and finishing seam allowances. This may be replaced with a stretch overlock stitch or a zigzag stitch on a regular sewing machine (overlock or zigzag stitch width 2–3 mm, stitch length 2.5 mm)
- coverstitch or coverlock machine for finishing the garment hem. If you don't have a coverstitch machine, the hem can be finished with a twin needle on a regular sewing machine that has a zigzag function
- elastic threader (may be replaced with a safety pin)

***IMPORTANT!** We recommend using specialty needles when working with knit fabrics (for example, STRETCH, SUPER STRETCH, JERSEY, etc.). These are ballpoint needles, so they part the threads of the fabric you are stitching without piercing them.*

PATTERN PIECES LIST

1. From main fabric:

- front leg — cut 2
- back leg — cut 2
- pocket lining — cut 2 on fold

***IMPORTANT!** Don't forget to transfer all pattern markings and notches onto the fabric.*

2. From interfacing:

- two 2×1.5 cm (3/4×5/8") strips to reinforce the buttonhole areas on the waistband piece
- The interfacing strips should be cut on the straight grain (parallel to the selvedge).

SEAM ALLOWANCES

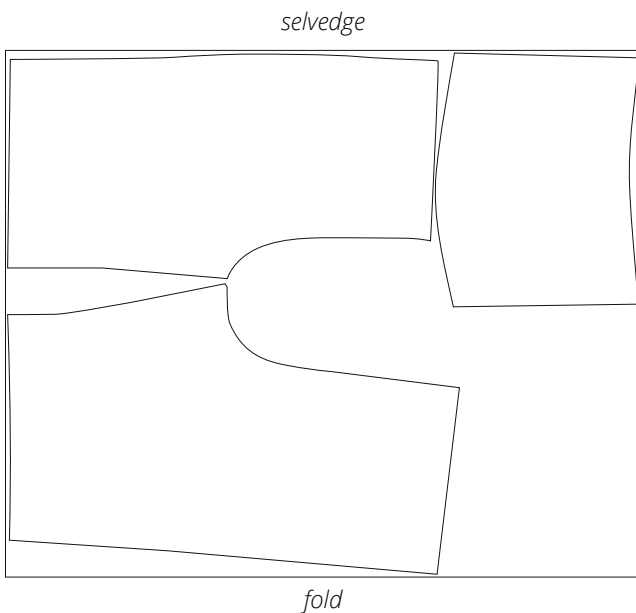
All pattern pieces include seam allowances as follows:

- garment hem allowance — 4 cm (1 5/8")
- grown-on waistband on the front leg and back leg pieces — 4.5 cm (1 3/4")
- all other edges — 1 cm (3/8")

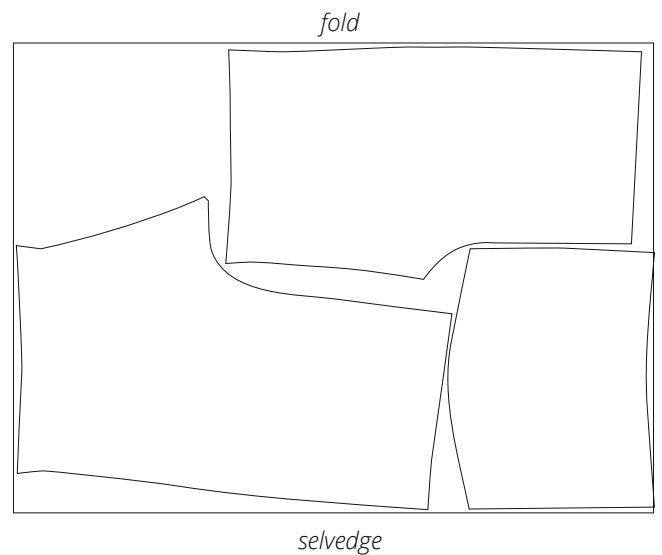
Take this into account when laying out the pattern pieces on the fabric.

CUTTING LAYOUT

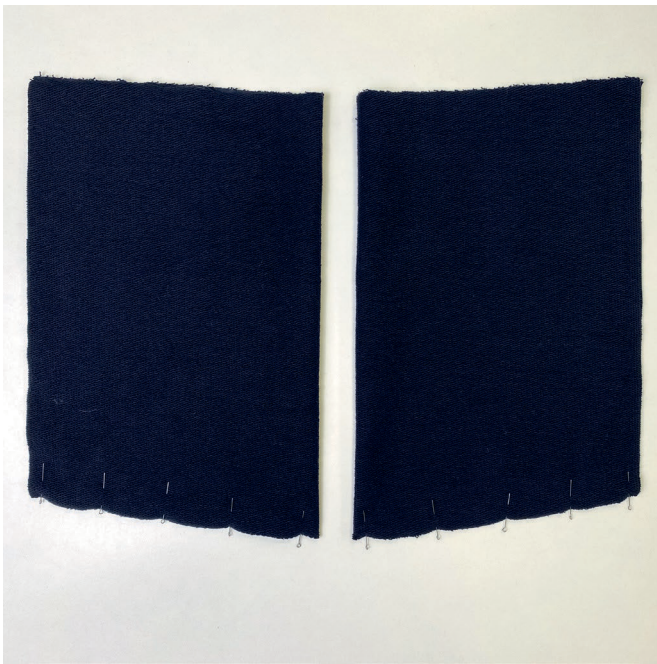
Main fabric, 160–180 cm (63–71") wide,
with a directional print/nap, cut on fold,
for sizes 38–40 in all heights



Main fabric, 160–180 cm (63–71") wide,
with a directional print/nap, cut on fold,
for sizes 42–54 in all heights



READY? LET'S GET SEWING!



Fold the pocket lining piece right sides together along the foldline. Align the bottom edges and pin. Stitch on the overlocker, with the outer side facing up.

Use a 4-thread overlocker for this step, as well as for all the following similar steps. You can replace the overlocker with a stretch stitch or a zigzag stitch on a regular sewing machine.

Attention! The overlocker stitch width is 7 mm (just over 1/4"), so 3 mm (1/8") need to be trimmed off. You can either trim the seam allowances beforehand or let the overlocker cut off the extra fabric while stitching.



Press the seam.

Tie the thread tails into knots and hide them in the seam allowance using a loop turner or a large-eye needle.



Fold the inner pocket lining out of the way and place the right side of the outer pocket lining against the right side of the front leg. Align the side edges and match the notches. Pin the pocket lining in place.