

FROM THE FOUNDER OF THE #VIKISEWS BRAND



Back in 2016, when I was working on my first set of sewing instructions, I was trying to write them in such a way that even a complete beginner could easily understand and use them to create their very first garment. These instructions laid the foundation for the Vikisews brand, its vision and its mission. I wanted to create modern patterns with the most detailed and clear instructions.

Now, with each new collection we are constantly improving our instructions, amending them and adding more relevant details. By the time the final product reaches you, our drafters, correctors, and editors would have spent weeks perfecting every word and every photograph. If you compile a few of our instructions together, you will get a sewing manual that will assist you in sewing all kinds of garments at any difficulty level.

And I would be very happy if these instructions helped you to turn your hobby into a lifelong passion... Enjoy the process! Create your ultimate dream wardrobe! Wear your garments proudly for years to come!

If you have any questions, please contact us at info@vikisews.com - we are always there to help.



KURT PATTERN DESCRIPTION

Kurt is a pair of loose-fitting pants with a straight silhouette. The applied waistband has topstitched belt loops. The front features slash pockets and a watch pocket on the right. The back has an applied yoke and patch pockets. All seams are topstitched. The waistband closes with a button and buttonhole. The pants have a fly front zipper closure and are floor-length.



IMPORTANT!

The contents of this pattern are copyright protected and belong exclusively to Vikisews. You may use Vikisews patterns for personal use. It is prohibited to share Vikisews patterns and instructions with third parties, as well as to publish patterns and instructions online for public access. **Non-compliance with the mentioned rules is a violation of the US copyright law and may result in civil liability and criminal prosecution.**

You may use Vikisews patterns for commercial use, to sew custom-made garments and/or create fashion collections, on the condition that the patterns are solely used in a manufacturing setting and are not further shared with individuals.

TOTAL EASE ALLOWANCE

	Waistline ease (estimated)	Hipline ease
cm	4.8–7.9	1.5–2.9
inches	1 7/8–3 1/8	5/8–1 1/8

GARMENT LENGTH

Height, cm	Side seam length including waistband, cm	Height, ft	Side seam length including waistband, in
1 (170–176)	108.1–108.3	1 (5'7"–5'9")	42 1/2–42 5/8
2 (178–184)	112–112.3	2 (5'10"–6')	44 1/8–44 1/4
3 (186–192)	116.1–116.3	3 (6'1"–6'3")	45 3/4
4 (194–200)	120.1–120.3	4 (6'4"–6'7")	47 1/4–47 3/8

FINISHED HEM WIDTH, FOR ALL HEIGHTS

Size	38	40	42	44	46	48	50	52	54
cm	24.4	24.8	25.2	25.6	26	26.4	26.8	27.2	27.6
inches	9 5/8	9 3/4	9 7/8	10 1/8	10 1/4	10 3/8	10 1/2	10 3/4	10 7/8

SUGGESTED FABRIC

To sew these pants, choose heavy-weight or medium-weight, non-stretch or low-stretch fabrics. The fiber content can include natural fibers (cotton), artificial fibers (viscose), or blended fibers (cotton + viscose, cotton + polyester, etc.).

The following fabrics are recommended: denim, corduroy.

For the pocket lining, use cotton, poplin.

The pants in the photo are made of denim. The fabric is medium weight and non-stretch. The fiber content is 100% cotton. The fabric weight is 450 g/m².

The pocket lining is made of 100% cotton.

FABRIC AND NOTIONS REQUIREMENTS

1. Main fabric, 140 cm wide, with a directional print/nap, in meters:

Height, cm	Size			
	38	40	42-52	54
1 (170-176)	1.45	1.5	1.95	1.95
2 (178-184)	1.5	1.55	2	2.05
3 (186-192)	1.55	1.6	2.1	2.1
4 (194-200)	1.6	1.75	2.15	2.2

Main fabric, 55" wide, with a directional print/nap, in yards:

Height, ft	Size			
	38	40	42-52	54
1 (5'7"-5'9")	1 5/8	1 5/8	2 1/8	2 1/8
2 (5'10"-6')	1 5/8	1 3/4	2 1/8	2 1/4
3 (6'1"-6'3")	1 3/4	1 3/4	2 1/4	2 1/4
4 (6'4"-6'7")	1 3/4	1 7/8	2 3/8	2 3/8

Main fabric, 150 cm wide, with a directional print/nap, in meters:

Height, cm	Size		
	38-42	44	46-54
1 (170-176)	1.4	1.45	1.95
2 (178-184)	1.45	1.5	2
3 (186-192)	1.5	1.5	2.05
4 (194-200)	1.55	1.55	2.15

Main fabric, 59" wide, with a directional print/nap, in yards:

Height, ft	Size		
	38-42	44	46-54
1 (5'7"-5'9")	1 1/2	1 5/8	2 1/8
2 (5'10"-6')	1 5/8	1 5/8	2 1/8
3 (6'1"-6'3")	1 5/8	1 5/8	2 1/4
4 (6'4"-6'7")	1 3/4	1 3/4	2 3/8

***IMPORTANT!** When purchasing fabric, please account for shrinkage and buy 5% more than required.*

2. Lining fabric, 140 cm (55") wide, for all sizes and heights — 0.25 m (1/4 yd)
3. Lightweight interfacing, knit or woven, 140 cm (55") wide, 50 g/m², for all heights:

Size	38	40	42-44	46	48	50	52	54
meters	0.95	1	1.05	1.1	1.15	1.2	1.2	1.25
yards	1	1 1/8	1 1/8	1 1/4	1 1/4	1 1/4	1 1/4	1 3/8

4. One metal pant zipper, 20 cm (8") long, for all sizes and heights
5. Bias-cut fusible stay tape, 1 cm (3/8") wide — 0.7 m (3/4 yd)
6. One metal stud button for jeans, 2–2.5 cm (3/4–1") in diameter
7. Six metal rivets, 7 mm (just over 1/4") in diameter
8. Matching thread — 5 spools (1 spool for the sewing machine + 4 spools for the overlocker)
9. Matching (or contrasting) topstitching thread (e.g., Madeira No. 35) — 2 spools

TOOLS AND EQUIPMENT

- sewing machine for construction
- overlocker for finishing raw edges. This may be replaced with a stretch overlock stitch or a zigzag stitch on the sewing machine (overlock or zigzag stitch width 2–3 mm, stitch length 2.5 mm)
- buttonhole foot for the sewing machine
- stitch-in-the-ditch foot for the sewing machine (optional)
- one-sided foot for the sewing machine
- press tool with a set of molds for installing a stud button and rivets, hole puncher

PATTERN PIECES LIST

1. From main fabric:

- front leg — cut 2
- slash pocket — cut 2
- back yoke — cut 2
- back leg — cut 2
- fly shield — cut 1
- fly extension — cut 1
- patch pocket — cut 2
- watch pocket — cut 1
- waistband — cut 1
- belt loop — cut 1

***IMPORTANT!** Don't forget to transfer all pattern markings and notches onto the fabric.*

2. From lining fabric:

- pocket top lining — cut 2
- pocket bottom lining — cut 2

3. From interfacing:

- waistband — cut 1
- fly extension — cut 1
- fly shield — cut 1/2
- top seam allowance of the patch pocket piece — cut 2
- top seam allowance of the watch pocket piece — cut 1

Attention! Cut out the waistband piece roughly, as the fabric may shrink during interfacing. The interfacing strips should be cut on the straight grain (parallel to the selvedge).

SEAM ALLOWANCES

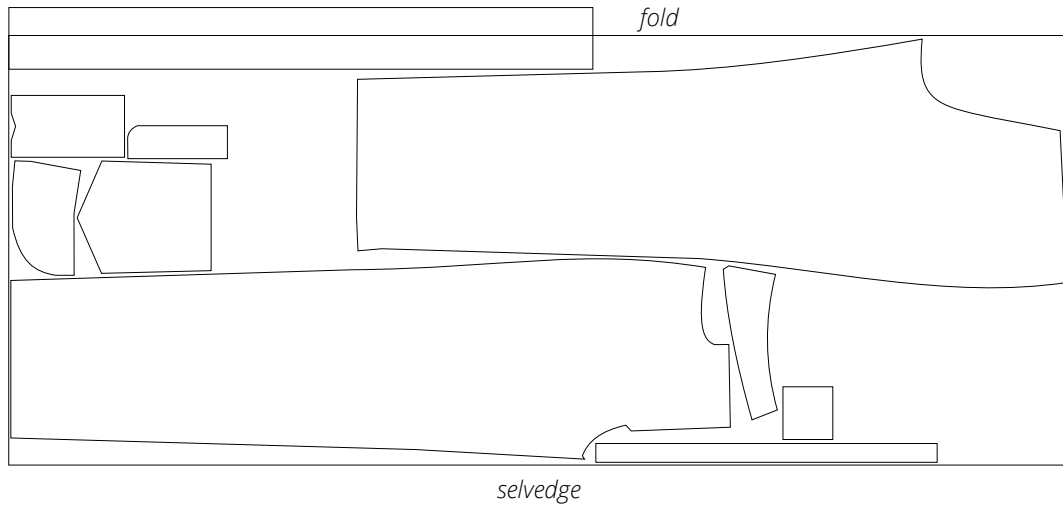
All pattern pieces include seam allowances as follows:

- garment hem allowance — 3 cm (1 1/8")
- top seam allowance of the patch pocket — 3 cm (1 1/8")
- top seam allowance of the watch pocket — 2 cm (3/4")
- all other edges — 1 cm (3/8")

Take this into account when laying out the pattern pieces on the fabric.

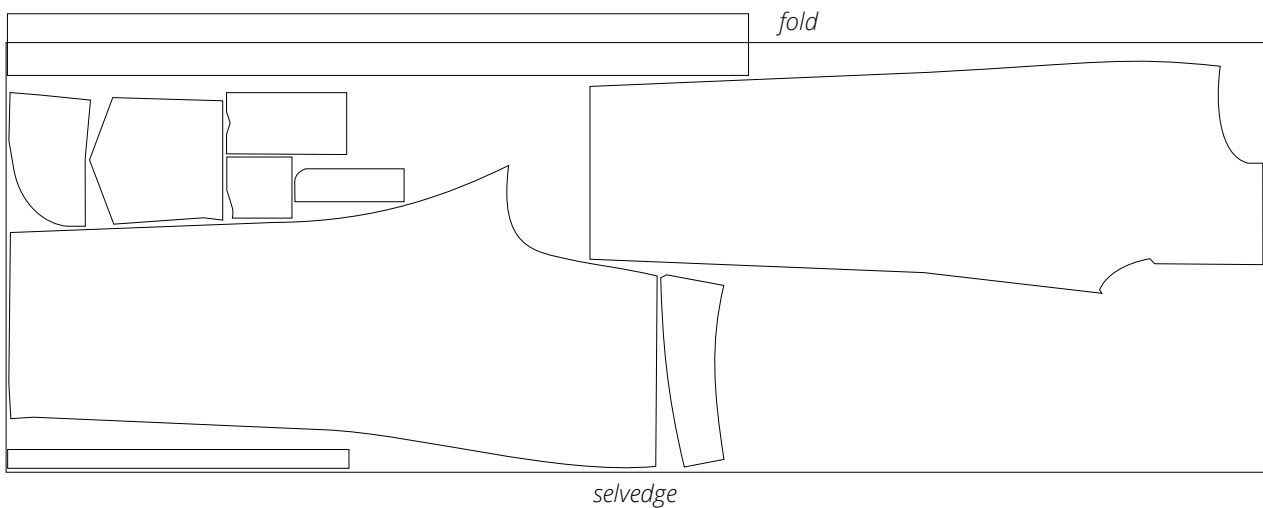
CUTTING LAYOUT

Main fabric, 140 cm (55") wide, with a directional print/nap,
cut on fold, for sizes 38-40 in all heights



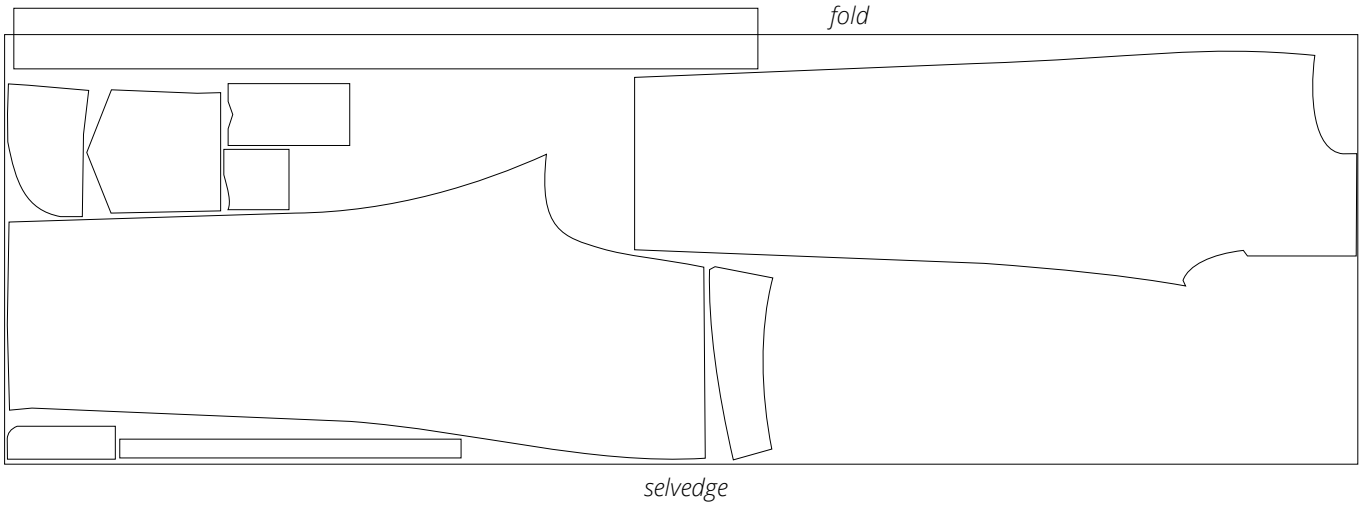
Attention! Cut the waistband piece on a single layer out of leftover fabric.
Cut only one fly extension, one watch pocket, one fly shield, and one belt loop.

Main fabric, 140 cm (55") wide, with a directional print/nap,
cut on fold, for sizes 42-54, in heights 1-2



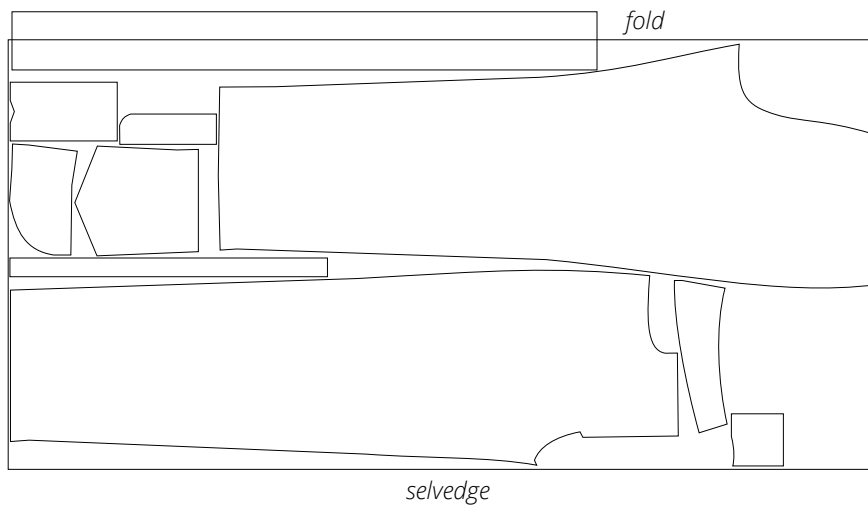
Attention! Cut the waistband piece on a single layer out of leftover fabric.
Cut only one fly extension, one watch pocket, one fly shield, and one belt loop.

Main fabric, 140 cm (55") wide, with a directional print/nap,
cut on fold, for sizes 42-54 in heights 3-4



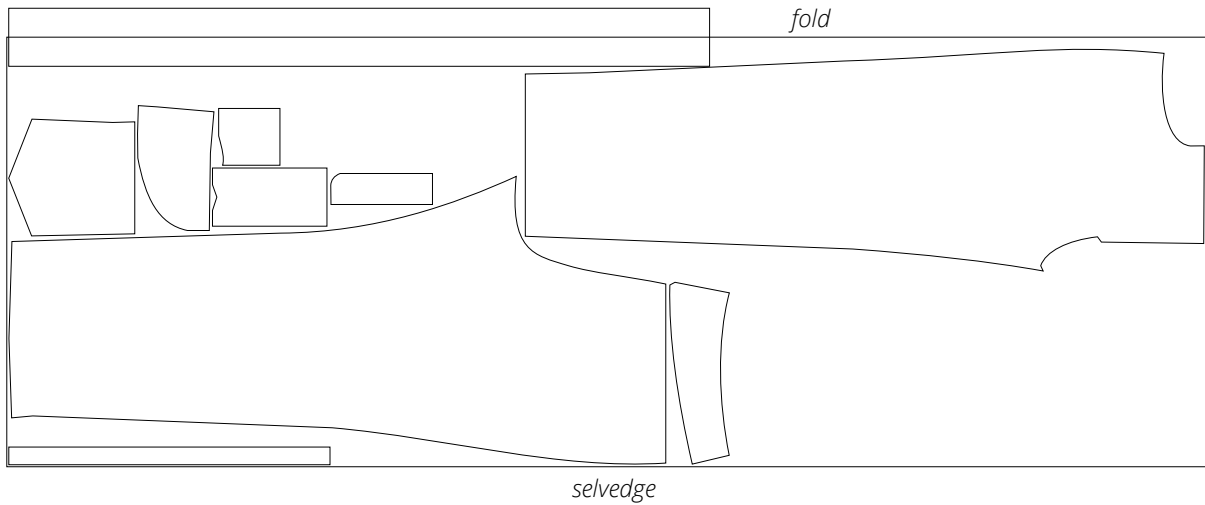
Attention! Cut the waistband piece on a single layer out of leftover fabric.
Cut only one fly extension, one watch pocket, one fly shield, and one belt loop.

Main fabric, 150 cm (59") wide, with a directional print/nap,
cut on fold, for sizes 34-44 in all heights



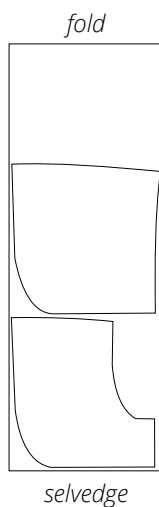
Attention! Cut the waistband piece on a single layer out of leftover fabric.
Cut only one fly extension, one watch pocket, one fly shield, and one belt loop.

Main fabric, 150 cm (59") wide, with a directional print/nap, cut on fold, for sizes 46-54 in all heights



Attention! Cut the waistband piece on a single layer out of leftover fabric. Cut only one fly extension, one watch pocket, one fly shield, and one belt loop.

Lining fabric, 140 cm (55") wide, with a directional print, cut on fold, for all sizes in all heights



Interfacing, 140 cm (55") wide, cut on a partial fold and in one direction, for all sizes in all heights



READY? LET'S GET SEWING!



Press the seam flat.



On the top seam allowance, trim the side seam allowances down to 5 mm (just under 1/4").



Turn the pocket right side out, push out the corners.

Press the top edge.