

FROM THE FOUNDER OF THE #VIKISEWS BRAND



Back in 2016, when I was working on my first set of sewing instructions, I was trying to write them in such a way that even a complete beginner could easily understand and use them to create their very first garment. These instructions laid the foundation for the Vikisews brand, its vision and its mission. I wanted to create modern patterns with the utmost detailed and clear instructions.

Now, with each new collection we are constantly improving our instructions, amending them and adding more relevant details. By the time the final product reaches you, our drafters, correctors, and editors would have spent weeks perfecting every word and every photograph. If you compile a few of our instructions together, you will get a sewing manual that will assist you in sewing all kinds of garments at any difficulty level.

And I would be very happy if these instructions helped you to turn your hobby into a lifelong passion... Enjoy the process! Create your ultimate dream wardrobe! Wear your garments proudly for years to come!

If you have any questions, please contact us at info@vikisews.com — we are always there to help.



VEDIS PATTERN DESCRIPTION

Vedis is a loose-fitting, straight-cut jacket with a lining quilted with insulation. The front has welt zipper pockets and patch gusset pockets with flaps. The back has a yoke with a pleat. The neckline is round. The stand collar features decorative topstitching. The long shirt sleeves are finished with elasticated cuffs at the bottom. The left sleeve has a patch gusset pocket with a flap. The bottom edge of the jacket is finished with an elasticated waistband. The jacket closes with a separating zipper. All seams are topstitched. Vedis is waist-length.



IMPORTANT!

The contents of this pattern are copyright protected and belong exclusively to Vikisews. You may use Vikisews patterns for personal use. It is prohibited to share Vikisews patterns and instructions with third parties, as well as to publish patterns and instructions online for public access. **Non-compliance with the mentioned rules is a violation of the US copyright law and may result in civil liability and criminal prosecution.**

You may use Vikisews patterns for commercial use, to sew custom-made garments and/or create fashion collections, on the condition that the patterns are solely used in a manufacturing setting and are not further shared with individuals.

TOTAL EASE ALLOWANCE

	Bust ease	Waistline ease	Upper arm ease
cm	58.5–62.5	54.7–56.5	24.1–27.1
inches	23–24 5/8	21 1/2–22 1/4	9 1/2–10 5/8

GARMENT LENGTH, SLEEVE LENGTH

Height, cm	Center back length including waistband width, cm	Sleeve length including shoulder width and cuff, cm
1 (154–160)	53.5–54.7	77.7–80.4
2 (162–168)	56.5–57.7	80–82.7
3 (170–176)	59.5–60.7	82.3–85
4 (178–184)	62.5–63.7	84.6–87.3

Height, ft	Center back length including waistband width, in	Sleeve length including shoulder width and cuff, in
1 (5'1"–5'3")	21 1/8–21 1/2	30 5/8–31 5/8
2 (5'4"–5'6")	22 1/4–22 3/4	31 1/2–32 1/2
3 (5'7"–5'9")	23 3/8–23 7/8	32 3/8–33 1/2
4 (5'10"–6'1")	24 5/8–25 1/8	33 1/4–34 3/8

SUGGESTED FABRIC

To sew this jacket, choose medium-weight, soft, non-stretch or low-stretch, structured outerwear fabrics made of natural, artificial, blended, or synthetic fibers.

The following fabrics are recommended: cotton gabardine, denim, faux leather.

Attention! Soft, thin outerwear fabrics are not recommended.

For the lining, use lining fabrics made of artificial, blended, or synthetic fibers.

For the insulation layer, choose 100 g/m² materials: alpolux, isosoft, thinsulate, holofiber, polyester batting, or pre-quilted fabrics.

The jacket in the photo is made of denim. The fabric is medium weight, pliable, and low-stretch. The fiber content is 100% cotton. The fabric weight is 300 g/m².

The lining is 100% viscose. The fabric weight is 100 g/m².

The insulation is alpolux with a weight of 100 g/m².

IMPORTANT! If you choose the fabric that gets a stone-washed effect after washing, choose fabric amounts based on a size and height larger than your own, as the fabric shrinks. After sewing, wash the finished garment 1–2 times.

FABRIC AND NOTIONS REQUIREMENTS

1. Main fabric, 140 cm wide, with a directional print/nap, in meters:

Height, cm	Size		
	XS-S	M-L	XL
1 (154–160)	1.95	1.95	2.05
2 (162–168)	1.95	2.05	2.05
3 (170–176)	2	2.15	2.15
4 (178–184)	2.1	2.2	2.25

Main fabric, 55" wide, with a directional print/nap, in yards:

Height, ft	Size		
	XS-S	M-L	XL
1 (5'1"–5'3")	2 1/8	2 1/8	2 1/4
2 (5'4"–5'6")	2 1/8	2 1/4	2 1/4
3 (5'7"–5'9")	2 1/8	2 3/8	2 3/8
4 (5'10"–6'1")	2 1/4	2 3/8	2 1/2

Main fabric, 150 cm wide, with a directional print/nap, in meters:

Height, cm	Size		
	XS-S	M-L	XL
1 (154–160)	1.75	1.85	1.95
2 (162–168)	1.85	1.9	2
3 (170–176)	1.9	1.95	2.05
4 (178–184)	1.95	2.05	2.1

Main fabric, 59" wide, with a directional print/nap, in yards:

Height, ft	Size		
	XS-S	M-L	XL
1 (5'1"–5'3")	1 7/8	2	2 1/8
2 (5'4"–5'6")	2	2 1/8	2 1/8
3 (5'7"–5'9")	2 1/8	2 1/8	2 1/4
4 (5'10"–6'1")	2 1/8	2 1/4	2 1/4

2. Lining fabric, 140 cm wide, with a directional print, in meters:

Height, cm	Size		
	XS-S	M-L	XL
1 (154-160)	1.6	1.65	1.65
2 (162-168)	1.7	1.75	1.75
3 (170-176)	1.8	1.8	1.85
4 (178-184)	1.85	1.9	1.9

Lining fabric, 55" wide, with a directional print, in yards:

Height, ft	Size	
	XS-S	M-L-XL
1 (5'1"-5'3")	1 3/4	1 3/4
2 (5'4"-5'6")	1 7/8	1 7/8
3 (5'7"-5'9")	2	2
4 (5'10"-6'1")	2	2 1/8

3. Insulation, 150 cm wide, cut in one direction, in meters:

Height, cm	Size		
	XS-S	M-L	XL
1 (154-160)	1.35	1.4	1.4
2 (162-168)	1.4	1.45	1.45
3 (170-176)	1.45	1.5	1.5
4 (178-184)	1.5	1.5	1.55

Insulation, 59" wide, cut in one direction, in yards:

Height, ft	Size		
	XS-S	M-L	XL
1 (5'1"-5'3")	1 1/2	1 1/2	1 1/2
2 (5'4"-5'6")	1 1/2	1 5/8	1 5/8
3 (5'7"-5'9")	1 5/8	1 5/8	1 5/8
4 (5'10"-6'1")	1 5/8	1 5/8	1 3/4

IMPORTANT! When purchasing fabric, please account for shrinkage and buy 5% more than required.

4. Lightweight interfacing, knit or woven, 140 cm (55") wide, for all sizes in all heights — 0.65 m (3/4 yd)

5. Bias-cut fusible stay tape with stitch reinforcement, 1.5 cm (5/8") wide — 2 m (2 1/8 yd)

6. One metal separating zipper, 65 cm (26") long, for all sizes in all heights

7. Two metal zippers for the pockets, 20 cm (7 7/8") long, for all sizes in all heights

8. Elastic, 6 cm (2 3/8") wide. The exact elastic length for the waistband and cuffs is specified in the pattern. Total elastic length:

Size	XS-S	M-L	XL
cm	115	133	152
inches	45 1/4	52 3/8	59 7/8

9. Matching thread — 4 spools (1 spool for the sewing machine + 3 spools for the overlocker)

10. Matching topstitching thread — 2 spools

TOOLS AND EQUIPMENT

- sewing machine for construction
- overlocker for finishing raw edges. This may be replaced with a stretch overlock stitch or a zigzag stitch on the sewing machine (overlock or zigzag stitch width 2–3 mm, stitch length 2.5 mm)
- stitch-in-the-ditch foot for the sewing machine (optional)
- one-sided foot for attaching the zipper

PATTERN PIECES LIST

1. From main fabric:

- front — cut 2
- back — cut 1 on fold
- back yoke — cut 1 on fold
- sleeve — cut 2
- stand collar — cut 2
- cuff — cut 2
- pocket welt — cut 4
- pocket top lining — cut 2
- patch pocket flap — cut 2
- patch pocket — cut 2
- patch pocket lining — cut 2
- patch pocket side placket — cut 2
- sleeve pocket flap — cut 1
- sleeve pocket — cut 1
- sleeve pocket side placket — cut 1
- front waistband — cut 2
- waistband — cut 1
- front facing — cut 2
- back neck facing — cut 1 on fold

2. From lining fabric:

- front lining — cut 2
- back lining — cut 1
- sleeve lining — cut 2
- pocket bottom lining — cut 2

***IMPORTANT!** Don't forget to transfer all pattern markings and notches onto the fabric.*

3. From insulation (alpolux):

- front lining — cut 2
- back lining — cut 1
- sleeve lining — cut 2
- front facing — cut 2
- back neck facing — cut 1 on fold
- pocket bottom lining — cut 2

3. From interfacing:

- stand collar — cut 2
- patch pocket flap — cut 2
- sleeve pocket flap — cut 1
- front waistband — cut 2
- front facing — cut 2
- back neck facing — cut 1 on fold

Additionally, cut the following from interfacing:

- two strips, width and length according to the pattern, to interface the pocket opening area on the front piece
- two strips, width and length according to the pattern, to interface the fold on the patch pocket piece
- one strip, width and length according to the pattern, to interface the fold on the sleeve pocket piece

The interfacing strips should be cut on the straight grain (parallel to the selvedge).

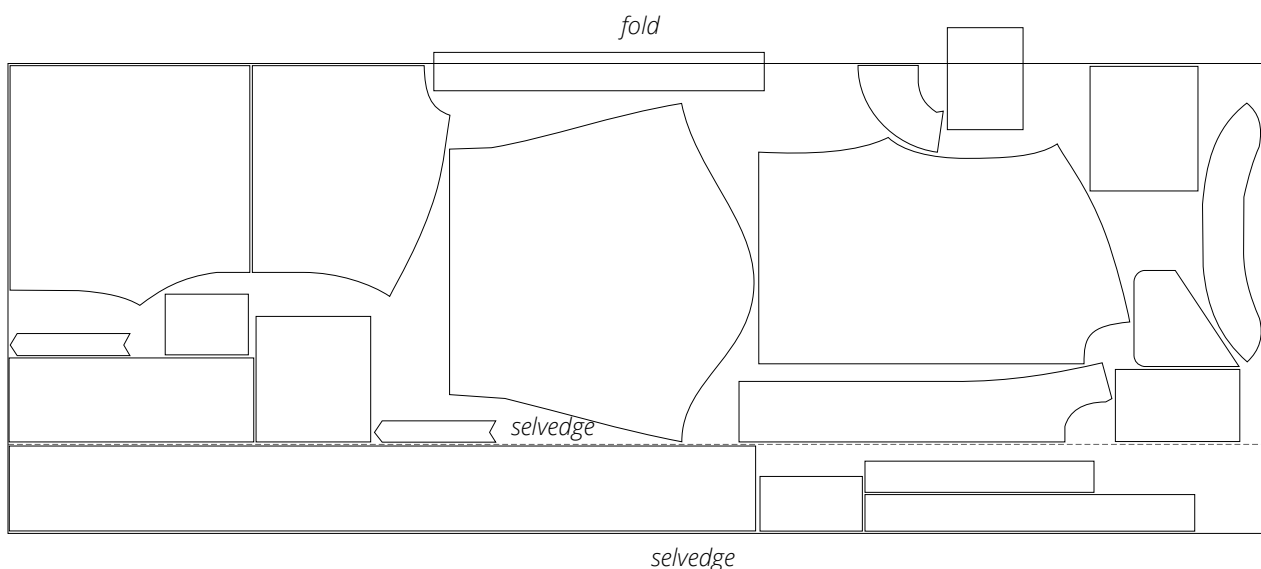
SEAM ALLOWANCES

All pattern pieces include 1 cm (3/8") seam allowances.

Take this into account when laying out the pattern pieces on the fabric.

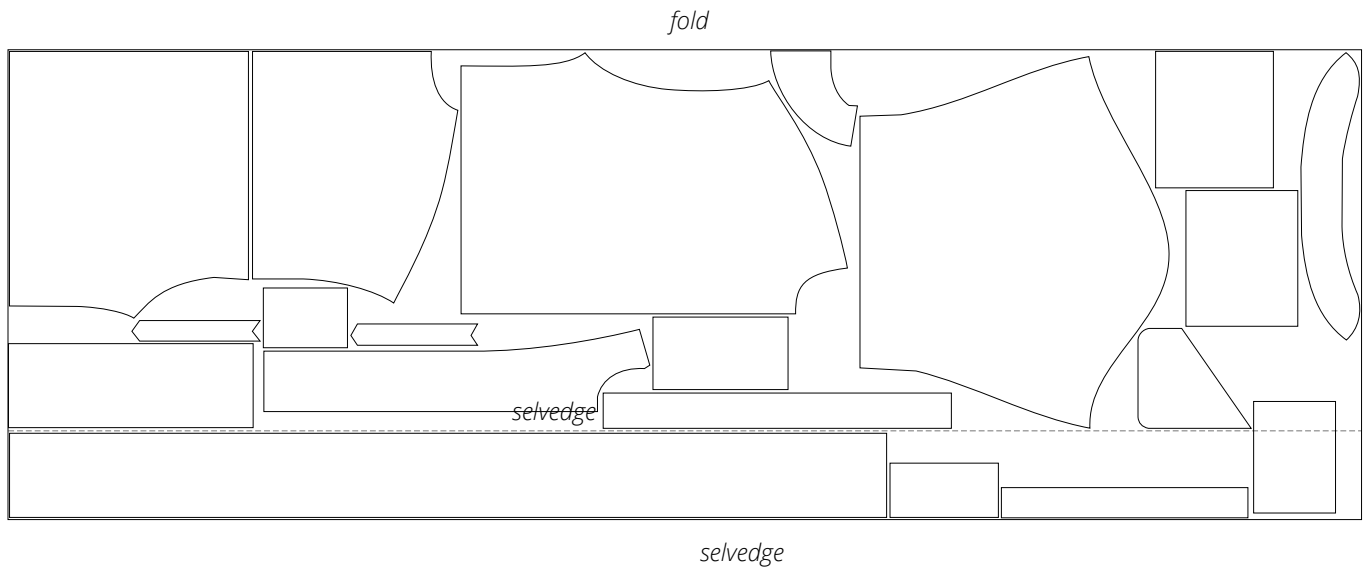
CUTTING LAYOUT

Main fabric, 140 cm (55") wide, with a directional print/nap, cut on a partial fold, for size XS-S in all heights



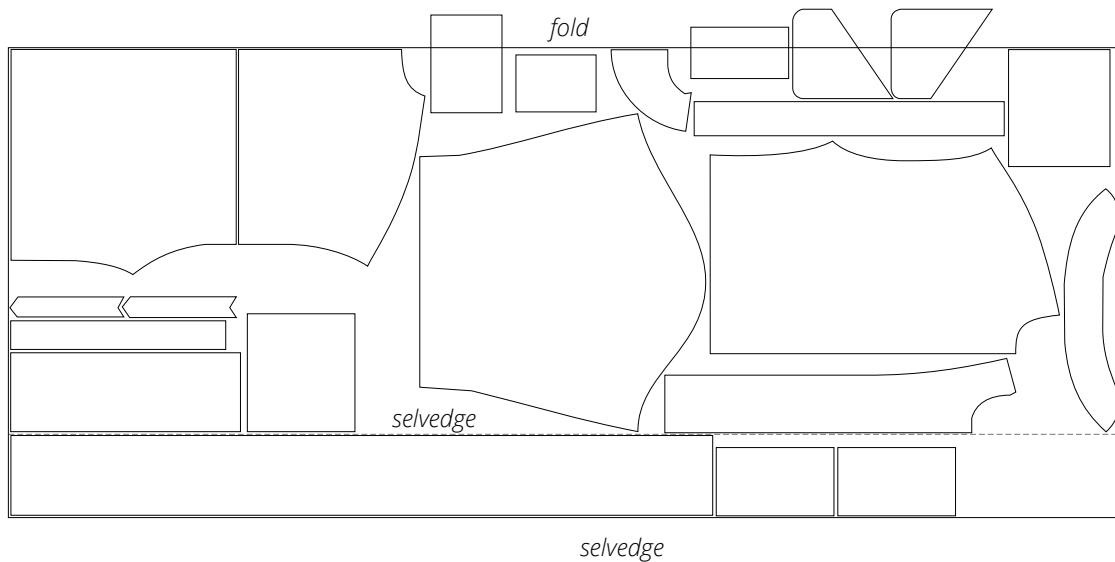
Attention! Cut only one sleeve pocket side placket piece and one sleeve pocket piece out of the leftover fabric.

Main fabric, 140 cm (55") wide, with a directional print/nap,
cut on a partial fold, for sizes M-L-XL in all heights



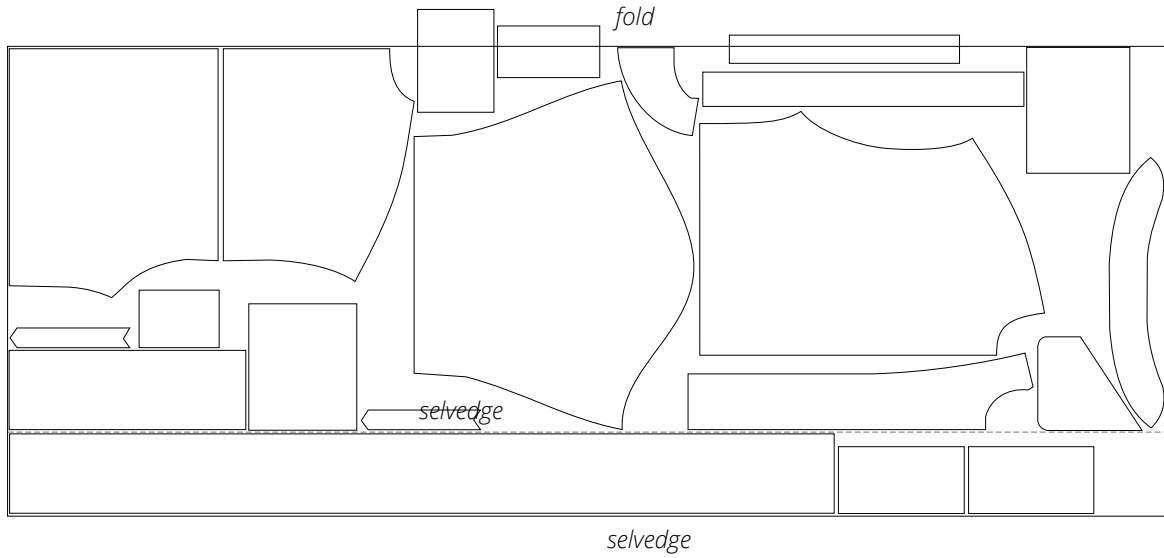
Attention! Cut only one sleeve pocket piece out of the leftover fabric.

Main fabric, 150 cm (59") wide, with a directional print/nap,
cut on a partial fold, for sizes XS-S in all heights



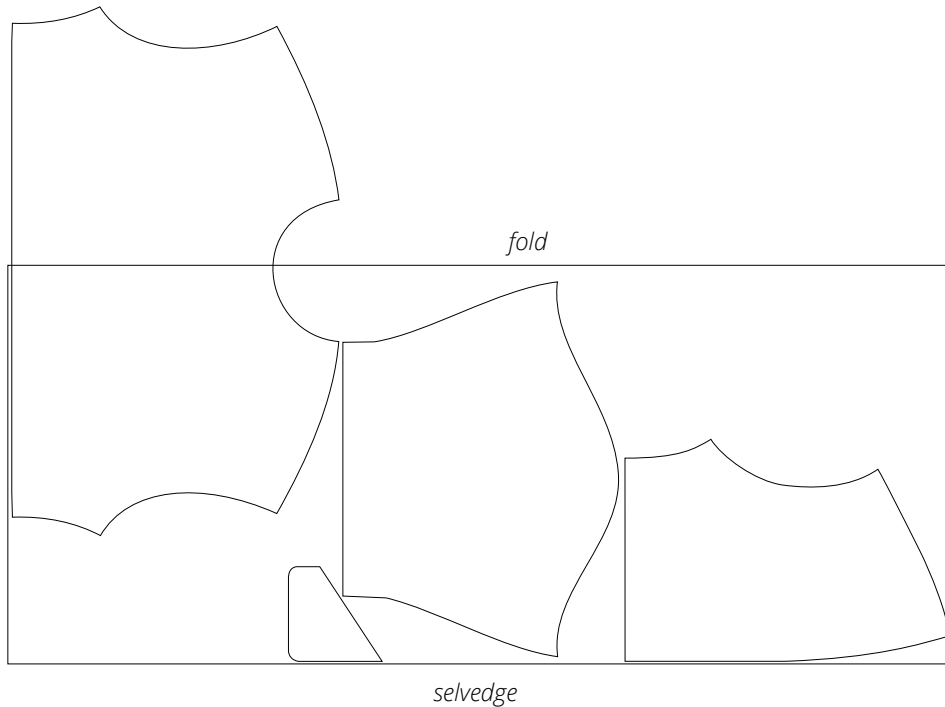
Attention! Cut only one sleeve pocket side placket piece. Cut the patch pocket flap, sleeve pocket, and pocket top lining pieces out of the leftover fabric.

Main fabric, 150 cm (59") wide, with a directional print/nap, cut on a partial fold, for sizes M-L-XL in all heights



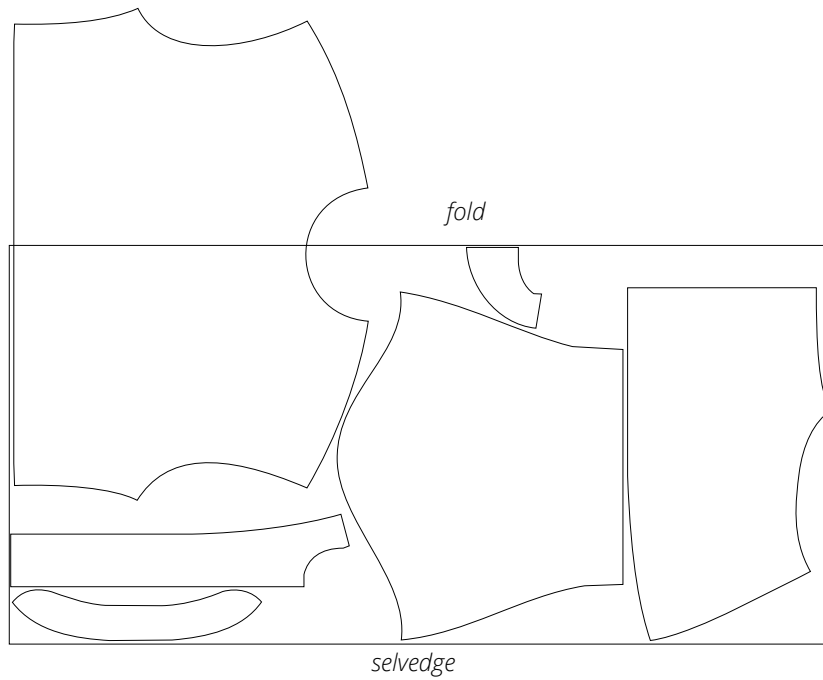
Attention! Cut the patch pocket flap, sleeve pocket, and sleeve pocket side placket pieces out of the leftover fabric.

Lining fabric, 140 cm (55") wide, with a directional print, cut on fold, for all sizes in all heights

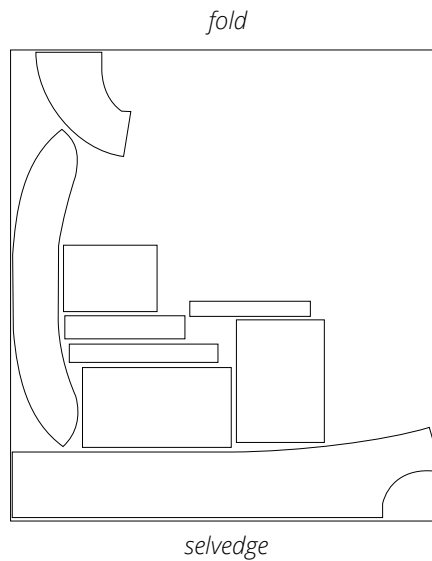


Attention! Cut the back lining pieces out of the leftover fabric.

Insulation, 100 g/m², 150 cm (59") wide, cut on fold,
for all sizes in all heights



Interfacing, 140 cm (55") wide, cut on fold,
for all sizes in all heights



Attention! Cut only one sleeve pocket flap piece
and one strip for the sleeve pocket.

READY? LET'S GET SEWING!



Place the paper pattern pieces onto the right side of the front, back, and sleeve lining pieces, matching the quilting lines.

Trim the lining pieces to match the corresponding pattern pieces.



Machine-stitch around the perimeter of the lining pieces at 5 mm (just under 1/4") from the edge. Use a 4-5 mm stitch length.



Place the insulation piece to the wrong side of the front facing piece.

Place the front facing and front lining pieces right sides together.

Align the edges, match the notches, and pin.