

# FROM THE FOUNDER OF THE #VIKISEWS BRAND

---

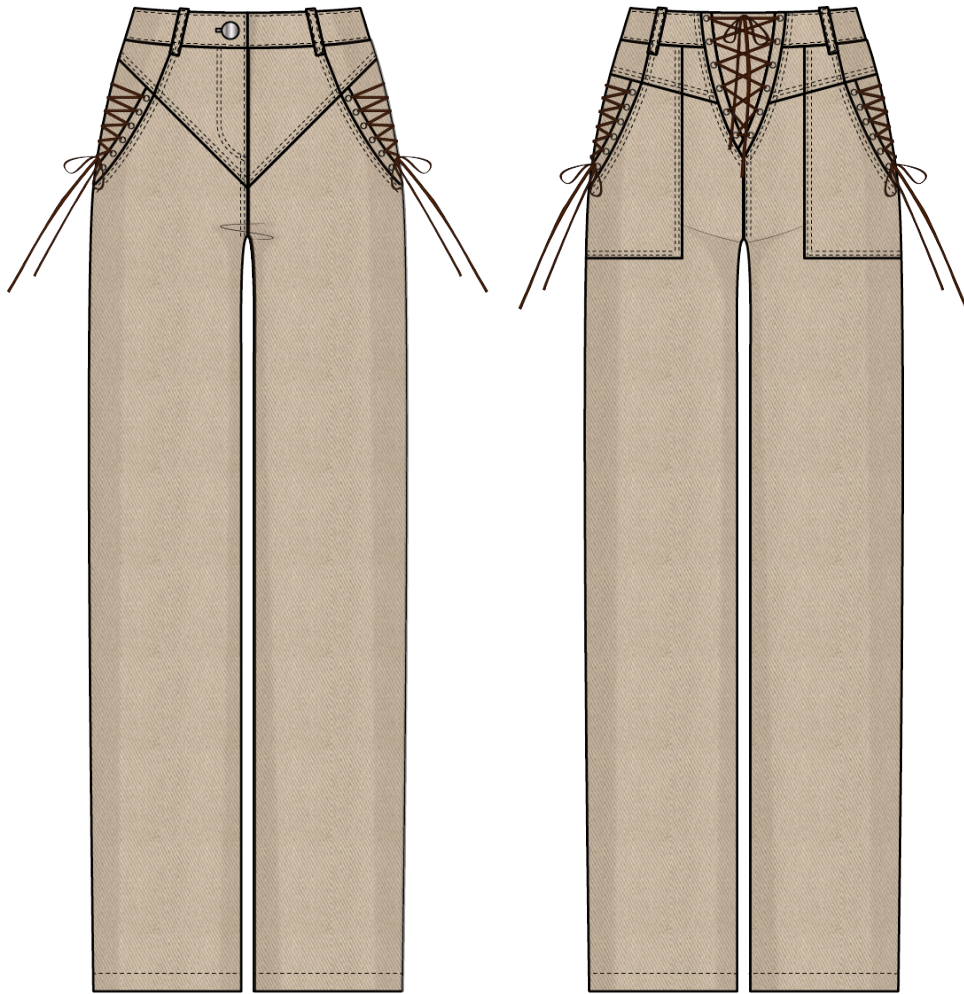


Back in 2016, when I was working on my first set of sewing instructions, I was trying to write them in such a way that even a complete beginner could easily understand and use them to create their very first garment. These instructions laid the foundation for the Vikisews brand, its vision and its mission. I wanted to create modern patterns with the utmost detailed and clear instructions.

Now, with each new collection we are constantly improving our instructions, amending them and adding more relevant details. By the time the final product reaches you, our drafters, correctors, and editors would have spent weeks perfecting every word and every photograph. If you compile a few of our instructions together, you will get a sewing manual that will assist you in sewing all kinds of garments at any difficulty level.

And I would be very happy if these instructions helped you to turn your hobby into a lifelong passion... Enjoy the process! Create your ultimate dream wardrobe! Wear your garments proudly for years to come!

If you have any questions, please contact us at [info@vikisews.com](mailto:info@vikisews.com) — we are always there to help.



## SKADI PATTERN DESCRIPTION

---

Skadi is pair of loose-fitting, straight-cut pants sitting 8 cm (3 1/8") below the natural waistline. The front has a yoke and slash pockets with decorative plackets. The back has a yoke and an insert at the center seam featuring decorative plackets. There are patch pockets with decorative plackets on the back. All decorative plackets feature grommets for lacing. The applied two-piece waistband has topstitched belt loops. The pants have a fly front zipper closure. The waistband closes with a stud button and buttonhole. All seams are topstitched. The pants are below-ankle length.



## IMPORTANT!

---

The contents of this pattern are copyright protected and belong exclusively to Vikisews. You may use Vikisews patterns for personal use. It is prohibited to share Vikisews patterns and instructions with third parties, as well as to publish patterns and instructions online for public access. **Non-compliance with the mentioned rules is a violation of the US copyright law and may result in civil liability and criminal prosecution.**

You may use Vikisews patterns for commercial use, to sew custom-made garments and/or create fashion collections, on the condition that the patterns are solely used in a manufacturing setting and are not further shared with individuals.

# TOTAL EASE ALLOWANCE

---

	Waistline ease (estimated)	Hipline ease
cm	10.4–13.4	2.5–4
inches	4 1/8–5 1/4	1–1 5/8

# GARMENT LENGTH

---

Height, cm	Side seam length including waistband, cm	Finished hem width, cm
1 (154–160)	106.4–107.2	30.6–33.8
2 (162–168)	110.4–111.2	30.6–33.8
3 (170–176)	114.4–115.2	30.6–33.8
4 (178–184)	118.4–119.2	30.6–33.8

Height, ft	Side seam length including waistband, in	Finished hem width, in
1 (5'1"–5'3")	41 7/8–42 1/4	12–13 1/4
2 (5'4"–5'6")	43 1/2–43 3/4	12–13 1/4
3 (5'7"–5'9")	45–45 3/8	12–13 1/4
4 (5'10"–6'1")	46 5/8–46 7/8	12–13 1/4

# SUGGESTED FABRIC

---

To sew these pants, choose medium-weight, non-stretch or low-stretch fabrics made of natural, artificial, or blended fibers.

The following fabrics are recommended: denim, corduroy, faux leather, and leather.

For the pocket lining, use lining fabrics made of artificial, blended, or synthetic fibers.

The pants in the photo are made of denim. The fabric is medium-weight and low-stretch. The fiber content is 100% cotton. The fabric weight is 300 g/m<sup>2</sup>.

The lining is 100% viscose. The fabric weight is 100 g/m<sup>2</sup>.

**IMPORTANT!** If you choose the fabric that gets a stone-washed effect after washing, choose fabric amounts based on a size and height larger than your own, as the fabric shrinks. After sewing, wash the finished garment 1–2 times.

# FABRIC AND NOTIONS REQUIREMENTS

1. Main fabric, 140 cm wide, with a directional print/nap, in meters:

Height, cm	Size			
	34-36	38-46	48	50-52
1 (154-160)	1.55	2	2	2.05
2 (162-168)	1.6	2	2.05	2.15
3 (170-176)	1.65	2.1	2.1	2.25
4 (178-184)	1.7	2.15	2.15	2.3

Main fabric, 55" wide, with a directional print/nap, in yards:

Height, ft	Size			
	34-36	38-46	48	50-52
1 (5'1"-5'3")	1 3/4	2 1/8	2 1/8	2 1/4
2 (5'4"-5'6")	1 3/4	2 1/8	2 1/4	2 3/8
3 (5'7"-5'9")	1 3/4	2 1/4	2 1/4	2 1/2
4 (5'10"-6'1")	1 7/8	2 3/8	2 3/8	2 1/2

Main fabric, 150 cm wide, with a directional print/nap, in meters:

Height, cm	Size		
	34-36	38-40	42-52
1 (154-160)	1.45	1.55	1.95
2 (162-168)	1.45	1.55	2
3 (170-176)	1.5	1.65	2.05
4 (178-184)	1.55	1.65	2.1

Main fabric, 59" wide, with a directional print/nap, in yards:

Height, ft	Size		
	34-36	38-40	42-52
1 (5'1"-5'3")	1 5/8	1 3/4	2 1/8
2 (5'4"-5'6")	1 5/8	1 3/4	2 1/8
3 (5'7"-5'9")	1 5/8	1 3/4	2 1/4
4 (5'10"-6'1")	1 3/4	1 3/4	2 1/4

***IMPORTANT!** When purchasing fabric, please account for shrinkage and buy 5% more than required.*

2. Lining fabric, 140 cm (55") wide, with a directional print for all sizes and heights, in meters: 0.25 m (1/4 yd)
3. Lightweight interfacing, knit or woven, 140 cm (55") wide, for all sizes and heights — 0.35 m (3/8 yd)
4. Stitched bias-cut fusible stay tape with stitch reinforcement, 1.5 cm (5/8") wide — 2.5 m (2 3/4 yd)
5. One zipper, 15 cm (6") long, for all sizes and heights
6. Thirty-six grommets, 3 mm (1/8") in diameter
7. One (plus one or two spare ones) metal stud button for jeans, 1.5–2 cm (5/8–3/4") in diameter
8. Decorative cord, 3–5 mm (1/8–just under 1/4") wide — total length 6.42 m (7 yd)
9. Matching thread — 4 spools (1 spool for the sewing machine + 2 spools for the overlocker)
10. Matching topstitching thread (for example, Madeira No. 35) — 2 spools

## TOOLS AND EQUIPMENT

---

- sewing machine for construction
- overlocker for finishing raw edges. This may be replaced with a stretch overlock stitch or a zigzag stitch on the sewing machine (overlock or zigzag stitch width 2–3 mm, stitch length 2.5 mm)
- buttonhole foot for the sewing machine
- stitch-in-the-ditch foot for the sewing machine (optional)
- press tool for installing buttons and grommets with a set of molds, hole puncher

# PATTERN PIECES LIST

---

## 1. From main fabric:

- front leg – cut 2
- back leg – cut 2
- right waistband – cut 2
- left waistband – cut 2
- center front yoke – cut 2
- side front yoke – cut 2
- center back yoke – cut 2
- mid back yoke – cut 2
- side back yoke – cut 2
- back insert – cut 1
- fly shield – cut 1
- fly extension – cut 1
- slash pocket – cut 2
- patch pocket – cut 2
- slash pocket placket – cut 2
- patch pocket placket – cut 2
- back insert placket – cut 2
- belt loops – cut 1 (4 pieces)

## 2. From lining fabric:

- pocket lining — cut 2

***IMPORTANT!** Don't forget to transfer all pattern markings and notches onto the fabric.*

## 3. From interfacing:

- right waistband — cut 2
- left waistband — cut 2
- fly extension — cut 1
- slash pocket placket — cut 2
- patch pocket placket — cut 2
- back insert placket — cut 2

## Partially interface the following:

- fly shield — cut 1
- back insert — cut 1

## Templates:

- slash pocket placket
- patch pocket placket
- back insert placket

# SEAM ALLOWANCES

---

All pattern pieces include seam allowances as follows:

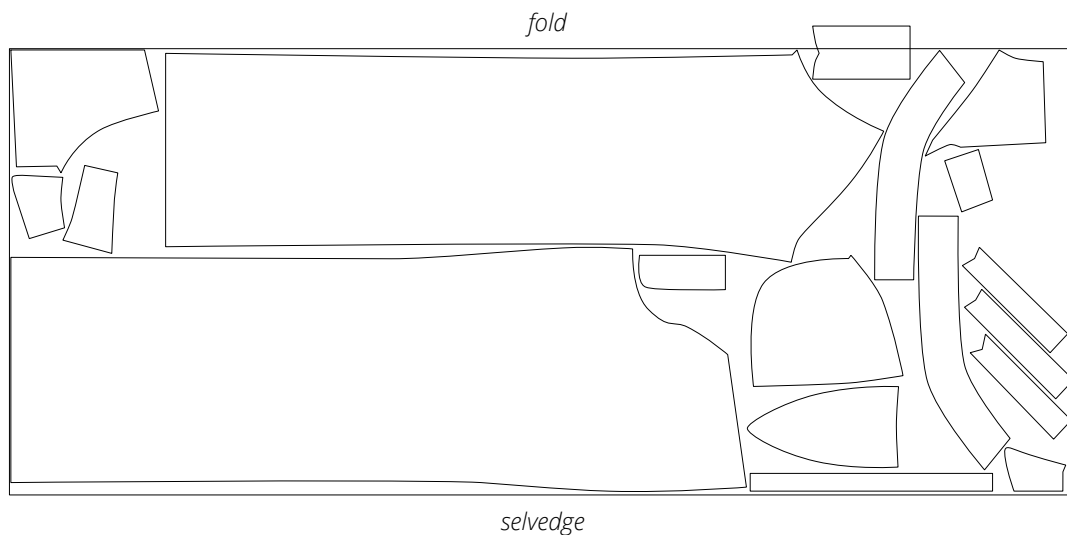
- garment hem allowance — 4 cm (1 5/8")
- all other edges — 1 cm (3/8")

Take this into account when laying out the pattern pieces on the fabric.

# CUTTING LAYOUT

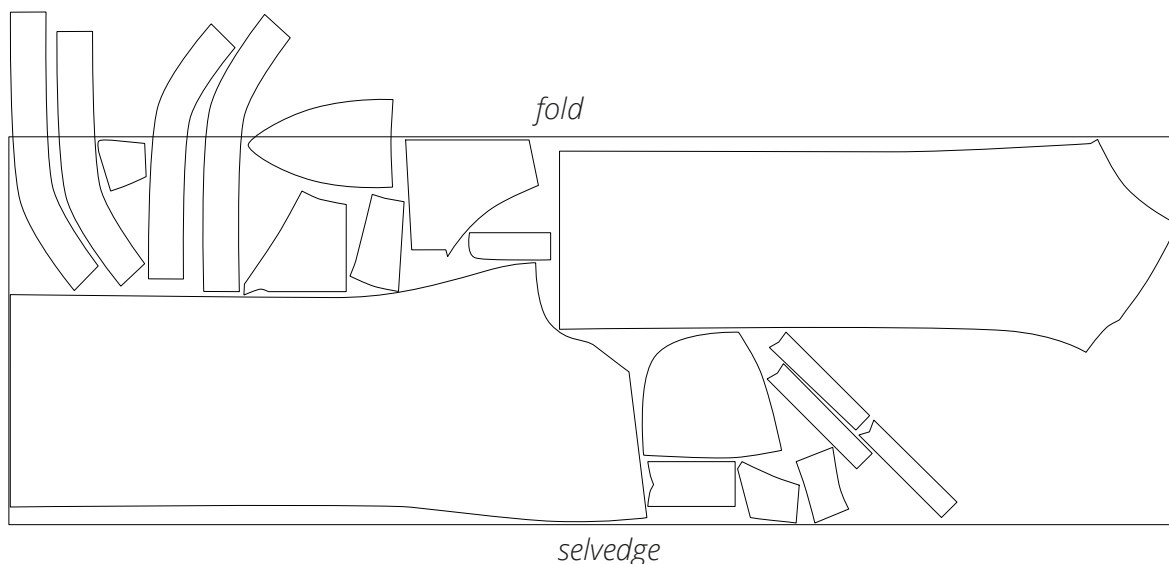
---

Main fabric, 140 cm (55") wide, with a directional print/nap, cut on fold, for sizes 34-36 in all heights



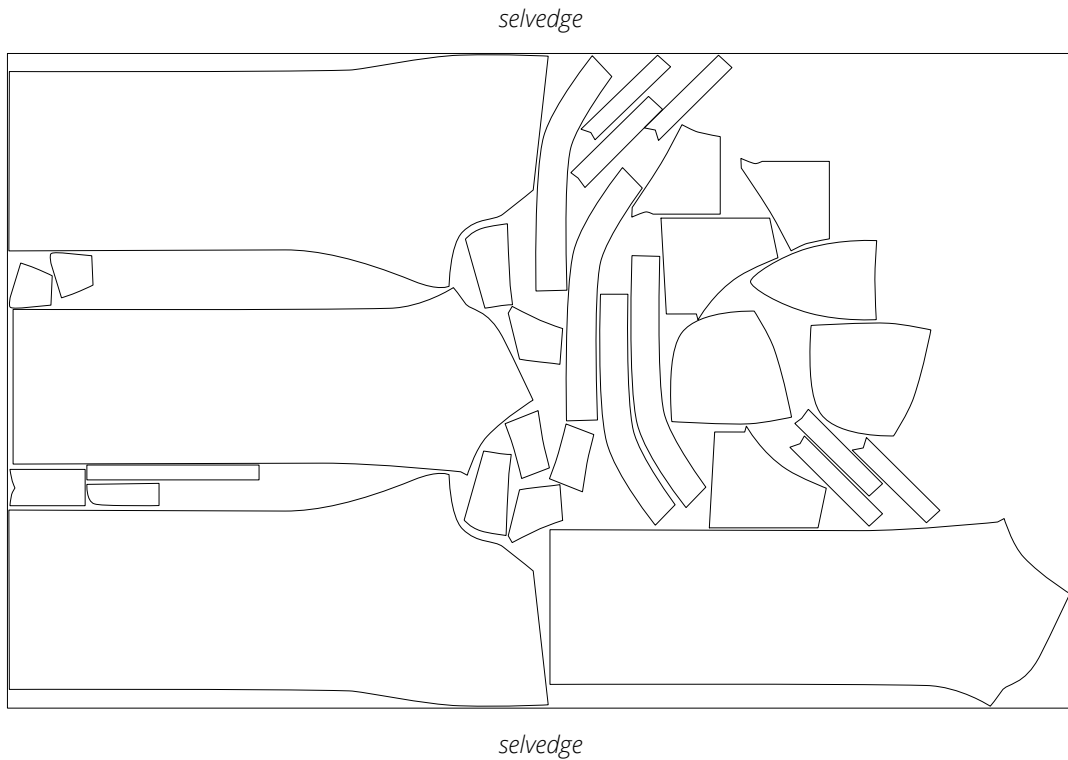
**Attention!** Cut one each of the back insert, fly shield, fly extension, and belt loop pieces.

Main fabric, 140 cm (55") wide, with a directional print/nap, cut on fold, for sizes 38-48 in all heights; main fabric, 150 cm (59") wide, with a directional print/nap, cut on fold, for sizes 42-52 in all heights

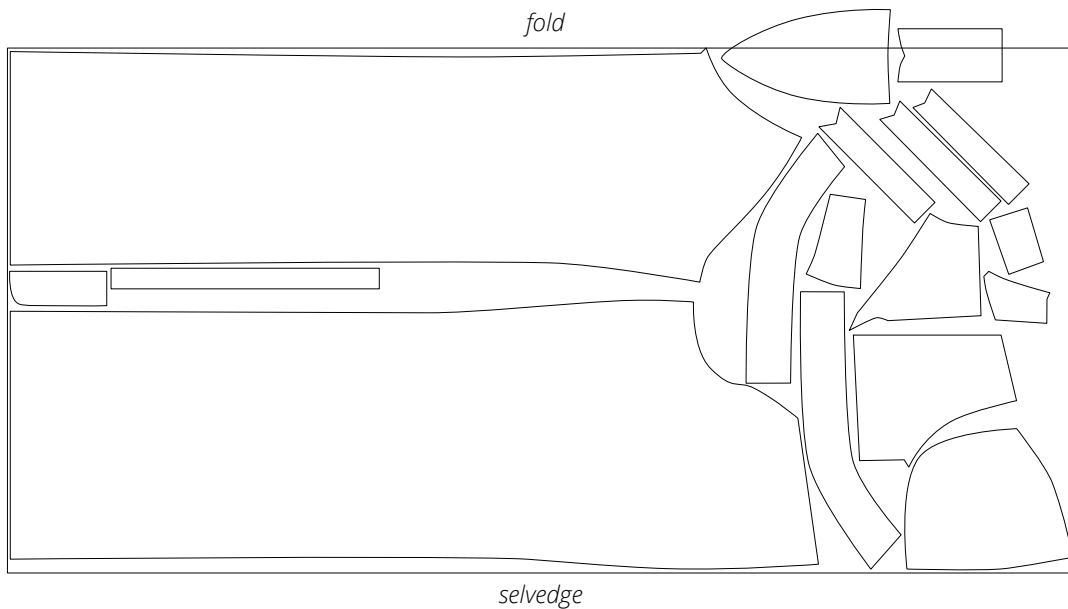


**Attention!** Cut one each of the fly shield and fly extension pieces. The right and left waistband, back insert, and belt loop pieces are cut on a single layer out of the leftover fabric.

Main fabric, 140 cm (55") wide, with a directional print/nap,  
cut on a single layer, for sizes 50-52 in all heights

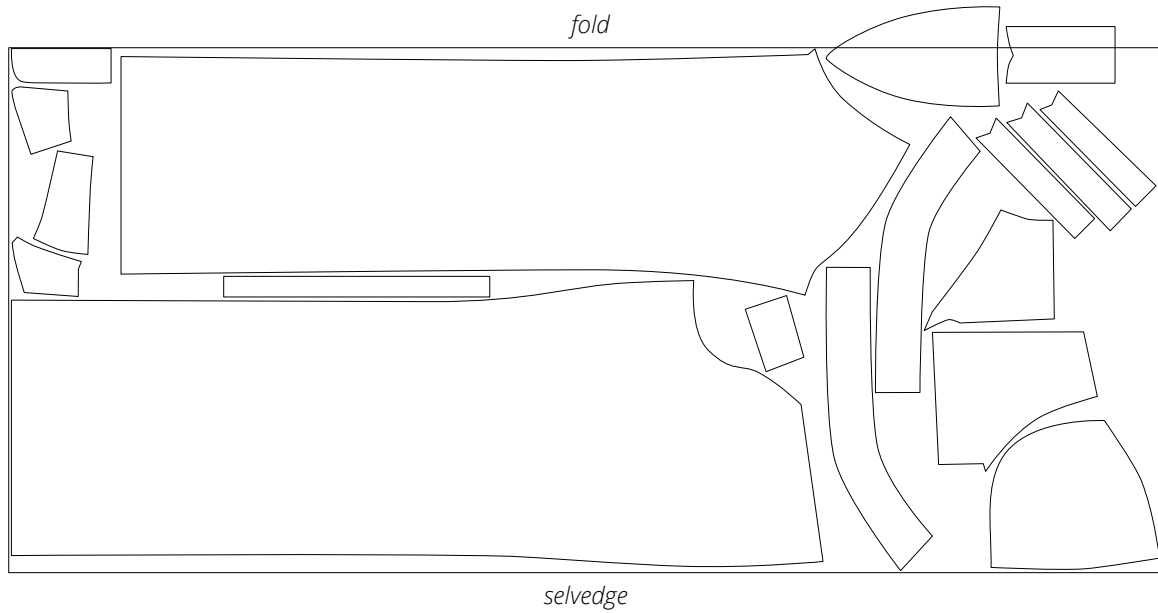


Main fabric, 150 cm (59") wide, with a directional print/nap,  
cut on fold, for sizes 34-36 in all heights



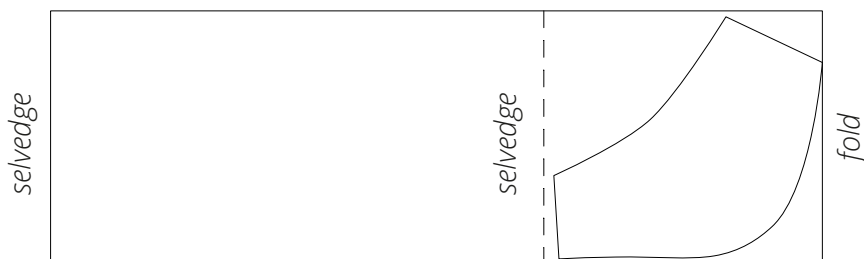
**Attention!** Cut one each of the fly extension and belt loop pieces. Back insert and fly shield pieces are cut on a single layer out of the leftover fabric.

Main fabric, 150 cm (59") wide, with a directional print/nap,  
cut on fold, for sizes 38-40 in all heights

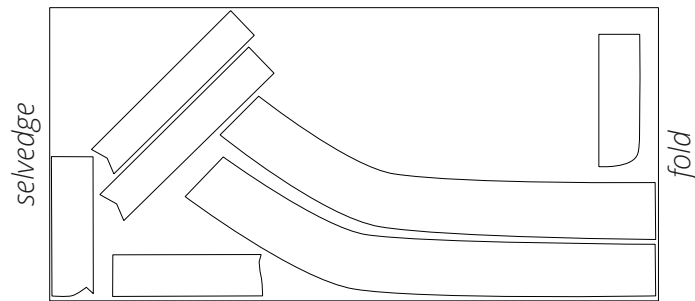


**Attention!** Cut one each of the fly extension and belt loop pieces. Back insert and fly shield pieces are cut on a single layer out of the leftover fabric.

Lining fabric, 140 cm (55") wide, with a directional print,  
cut on a partial fold, for all sizes in all heights



Interfacing, 140 cm (55") wide, cut on fold,  
for all sizes in all heights



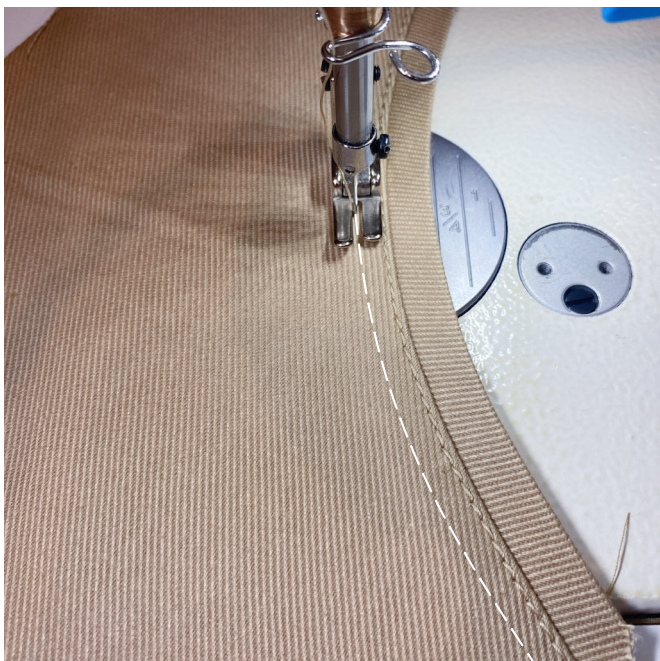
**Attention!** Cut one each of the fly extension and back insert pieces on a single layer out of the leftover fabric.

**READY? LET'S GET SEWING!**

---



Press the seam allowances towards the front leg.



Working from the right side and using topstitching thread, topstitch the front leg piece with two rows of stitching, at 1 mm and 6 mm (1/4") from the seam.

Use a 3.5 mm stitch length.



Press the topstitching.