

FROM THE FOUNDER OF THE #VIKISEWS BRAND

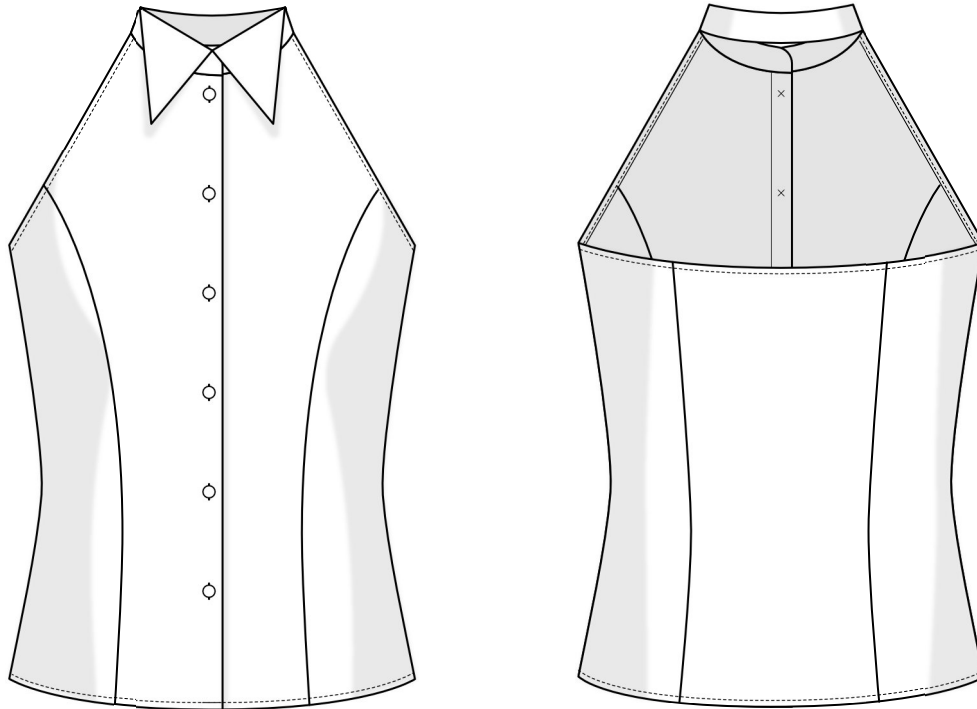


Back in 2016, when I was working on my first set of sewing instructions, I was trying to write them in such a way that even a complete beginner could easily understand and use them to create their very first garment. These instructions laid the foundation for the Vikisews brand, its vision and its mission. I wanted to create modern patterns with the utmost detailed and clear instructions.

Now, with each new collection we are constantly improving our instructions, amending them and adding more relevant details. By the time the final product reaches you, our drafters, correctors, and editors would have spent weeks perfecting every word and every photograph. If you compile a few of our instructions together, you will get a sewing manual that will assist you in sewing all kinds of garments at any difficulty level.

And I would be very happy if these instructions helped you to turn your hobby into a lifelong passion... Enjoy the process! Create your ultimate dream wardrobe! Wear your garments proudly for years to come!

If you have any questions, please contact us at info@vikisews.com — we are always there to help.



CORA PATTERN DESCRIPTION

Cora is a close-fitting blouse with cutaway shoulders. The front and back are fitted with princess seams. The back is open up to the shoulder blades. The blouse has a turn-down shirt collar with a grown-on collar stand and closes with buttons and buttonholes at the center front. Cora is below-waist length.



IMPORTANT!

The contents of this pattern are copyright protected and belong exclusively to Vikisews. You may use Vikisews patterns for personal use. It is prohibited to share Vikisews patterns and instructions with third parties, as well as to publish patterns and instructions online for public access. **Non-compliance with the mentioned rules is a violation of the US copyright law and may result in civil liability and criminal prosecution.**

You may use Vikisews patterns for commercial use, to sew custom-made garments and/or create fashion collections, on the condition that the patterns are solely used in a manufacturing setting and are not further shared with individuals.

TOTAL EASE ALLOWANCE

	Bust ease	Waistline ease	Hipline ease
cm	1-3.9	9-10	10.9
inches	3/8-1 1/2	3 1/2-3 7/8	4 1/4

GARMENT LENGTH

Height, cm	Back length from waist down, cm
1 (154-160)	16.1-19.5
2 (162-168)	18.1-21.5
3 (170-176)	20.1-23.5
4 (178-184)	22.1-25.5

Height, ft	Back length from waist down, in
1 (5'1"-5'3")	6 3/8-7 5/8
2 (5'4"-5'6")	7 1/8-8 1/2
3 (5'7"-5'9")	7 7/8-9 1/4
4 (5'10"-6'1")	8 3/4-10

SUGGESTED FABRIC

To sew this blouse, choose medium-weight or lightweight structured, non-stretch suiting and dress-weight fabrics. The fiber content can include natural fibers (silk, cotton, linen), artificial fibers (viscose), blended fibers (cotton + viscose, etc.), and synthetic fibers (polyester).

The following fabrics are recommended: satin, poplin, embroidered fabric, shirting cotton.

Attention! We do not recommend stretchy knit fabrics. The fabric should be structured.

The blouse in the photo is made of cotton. The fabric is medium weight, non-stretch, and structured. The fiber content is 76% cotton, 24% polyester. The fabric weight is 120 g/m².

FABRIC AND NOTIONS REQUIREMENTS

1. Main fabric, 140 cm wide, with a directional print/nap, 114–145 g/m², in meters:

Height, cm	Size									
	34	36	38	40	42	44	46	48	50	52
1 (154–160)	1.05	1.1	1.1	1.1	1.15	1.15	1.2	1.2	1.2	1.2
2 (162–168)	1.1	1.15	1.15	1.15	1.15	1.2	1.25	1.25	1.25	1.3
3 (170–176)	1.15	1.15	1.15	1.2	1.2	1.25	1.25	1.3	1.35	1.35
4 (178–184)	1.15	1.2	1.25	1.3	1.3	1.3	1.35	1.35	1.35	1.4

Main fabric, 55" wide, with a directional print/nap, 114–145 g/m², in yards:

Height, ft	Size					
	34	36	38–42	44	46–48	50–52
1 (5'1"–5'3")	1 1/8	1 1/4	1 1/4	1 1/4	1 1/4	1 1/4
2 (5'4"–5'6")	1 1/4	1 1/4	1 1/4	1 1/4	1 3/8	1 3/8
3 (5'7"–5'9")	1 1/4	1 1/4	1 1/4	1 3/8	1 3/8	1 1/2
4 (5'10"–6'1")	1 1/4	1 1/4	1 3/8	1 3/8	1 1/2	1 1/2

2. Lightweight interfacing, knit or woven, 140 cm wide, 35–40 g/m², in meters:

Height, cm	Size			
	34–36	38–42	44–46	48–52
1 (154–160)	0.55	0.55	0.55	0.6
2 (162–168)	0.55	0.6	0.6	0.6
3 (170–176)	0.6	0.6	0.65	0.65
4 (178–184)	0.6	0.65	0.65	0.65

Lightweight interfacing, knit or woven, 55" wide, 35–40 g/m², in yards:

Height, ft	Size		
	34–36	38–42	44–52
1 (5'1"–5'3")	5/8	5/8	5/8
2 (5'4"–5'6")	5/8	5/8	5/8
3 (5'7"–5'9")	5/8	5/8	3/4
4 (5'10"–6'1")	5/8	3/4	3/4

***IMPORTANT!** When purchasing fabric, please account for shrinkage and buy 5% more than required.*

3. Seven buttons, 0.7–1 cm (1/4–3/8") in diameter.
4. Matching thread — 5 spools (1 spool for the sewing machine + 4 spools for the overlocker).

TOOLS AND EQUIPMENT

- sewing machine for construction
- overlocker for finishing raw edges This may be replaced with a stretch overlock stitch or a zigzag stitch on the sewing machine (overlock or zigzag stitch width 2–3 mm, stitch length 2.5 mm)
- buttonhole foot for the sewing machine

PATTERN PIECES LIST

1. From main fabric:

- center front — cut 2
- side front — cut 2
- center back— cut 1 on fold
- side back— cut 2
- undercollar — cut 1 on fold
- upper collar — cut 1 on fold
- bias binding — cut 1

2. From interfacing:

- undercollar — cut 1 on fold
- upper collar — cut 1 on fold
- center front interfacing — cut 2

***IMPORTANT!** Don't forget to transfer all pattern markings and notches onto the fabric.*

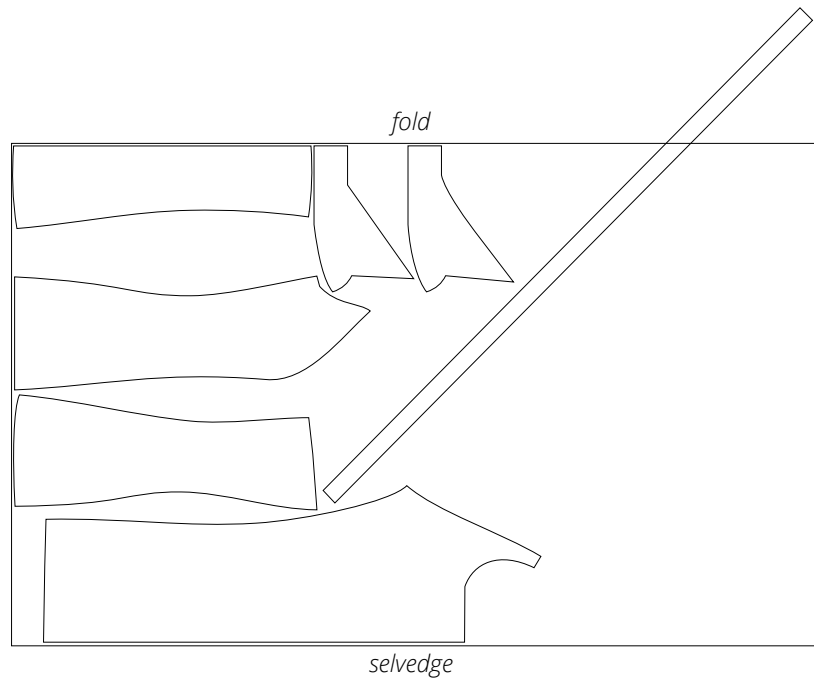
SEAM ALLOWANCES

All pattern pieces include 1 cm (3/8") seam allowances.

Take this into account when laying out the pattern pieces on the fabric.

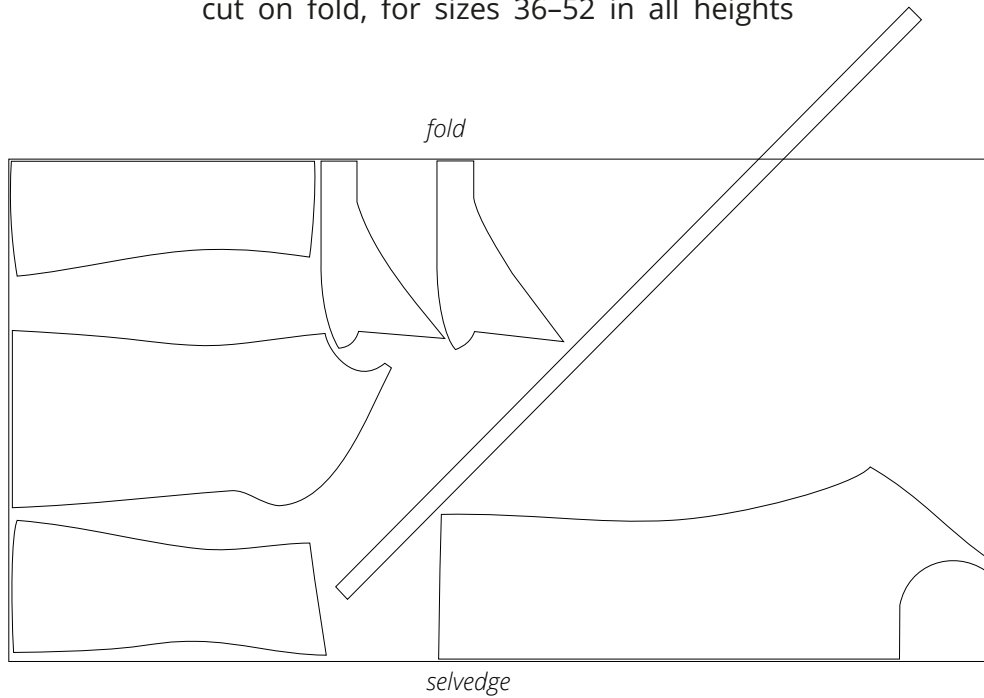
CUTTING LAYOUT

Main fabric, 140 cm (55") wide, with a directional print/nap, cut on fold, for size 34 in all heights



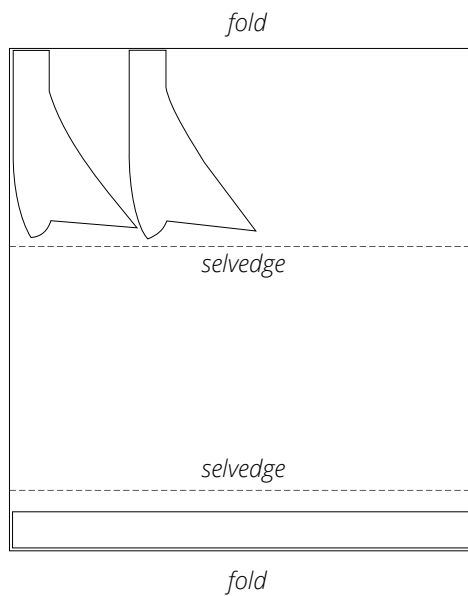
Attention! The binding piece is cut on a single layer out of the leftover fabric.

Main fabric, 140 cm (55") wide, with a directional print/nap,
cut on fold, for sizes 36-52 in all heights



Attention! The binding piece is cut on a single layer out of the leftover fabric.

Interfacing, 140 cm (55") wide, cut with two folds,
for all sizes in all heights.



READY? LET'S GET SEWING!



Press the seam allowances towards the center front on a tailor's board.



Overlock the princess seam allowances, with the side front piece facing up.
Press the seam.



Place the center back and side back pieces right sides together. Align the edges, match the notches, and pin.

Machine-stitch, backstitching at the beginning and end of the seam.