

FROM THE FOUNDER OF THE #VIKISEWS BRAND

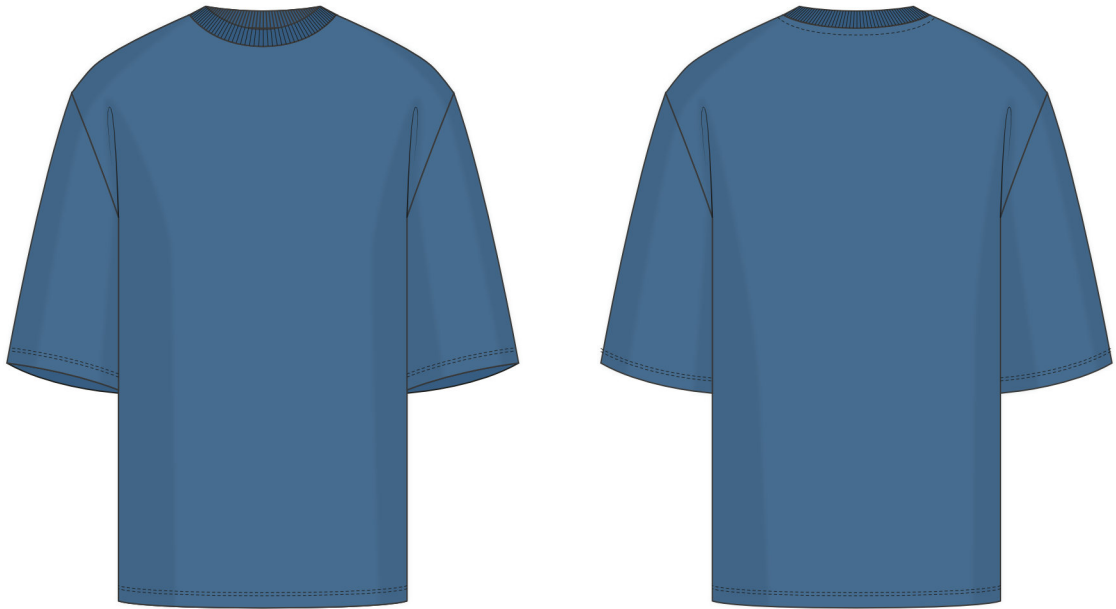


Back in 2016, when I was working on my first set of sewing instructions, I was trying to write them in such a way that even a complete beginner could easily understand and use them to create their very first garment. These instructions laid the foundation for the Vikisews brand, its vision and its mission. I wanted to create modern patterns with the most detailed and clear instructions.

Now, with each new collection we are constantly improving our instructions, amending them and adding more relevant details. By the time the final product reaches you, our drafters, correctors, and editors would have spent weeks perfecting every word and every photograph. If you compile a few of our instructions together, you will get a sewing manual that will assist you in sewing all kinds of garments at any difficulty level.

And I would be very happy if these instructions helped you to turn your hobby into a lifelong passion... Enjoy the process! Create your ultimate dream wardrobe! Wear your garments proudly for years to come!

If you have any questions, please contact us at info@vikisews.com - we are always there to help.



SKY PATTERN DESCRIPTION

Sky is a loose-fitting t-shirt with a straight silhouette. It has an extended shoulder line and set-in, elbow-length sleeves. The round neckline is finished with a neckband. Sky is below-hip length.



IMPORTANT!

The contents of this pattern are copyright protected and belong exclusively to Vikisews. You may use Vikisews patterns for personal use. It is prohibited to share Vikisews patterns and instructions with third parties, as well as to publish patterns and instructions online for public access. **Non-compliance with the mentioned rules is a violation of the US copyright law and may result in civil liability and criminal prosecution.**

You may use Vikisews patterns for commercial use, to sew custom-made garments and/or create fashion collections, on the condition that the patterns are solely used in a manufacturing setting and are not further shared with individuals.

TOTAL EASE ALLOWANCE

	Chest ease	Waistline ease	Hipline ease	Upper arm ease
cm	21	33	11.8–22.2	11.2–14.9
inches	8 1/4	13	4 5/8–8 3/4	4 3/8–5 7/8

GARMENT LENGTH, SLEEVE LENGTH

Height, cm	Back length including neckband, cm	Sleeve length including shoulder width and neckband, cm
1 (170–176)	77.1	49.8–56.3
2 (178–184)	80.1	50.9–57.4
3 (186–192)	83.1	52–58.5
4 (194–200)	86.1	53.1–59.6

Height, ft	Back length including neckband, in	Sleeve length including shoulder width and neckband, in
1 (5'7"–5'9")	27 3/4	19 5/8–22 1/8
2 (5'10"–6')	29	20–22 5/8
3 (6'1"–6'3")	30 1/8	20 1/2–23
4 (6'4"–6'7")	31 3/8	20 7/8–23 1/2

SUGGESTED FABRIC

To sew these t-shirt, choose medium-weight, non-stretch or low-stretch knit fabrics made of natural (wool, cotton), artificial (viscose), blended (wool + polyester, cotton + polyester, cotton + elastane, etc.), or synthetic fibers (polyester, polyester + elastane).

Attention! We do not recommend stretchy knit fabrics.

The t-shirt in the photo is made of heavyweight loop-back French terry. The fabric is heavyweight, low-stretch, and structured. The fiber content is 100% cotton. The fabric weight is 400 g/m².

The neckband is made of rib knit. The fabric is soft and medium-stretch. The fiber content is 95% cotton and 5% elastane. The fabric weight is 400 g/m².

IMPORTANT! If you can't find a rib knit that matches your main fabric, you can also sew the entire t-shirt from one type of fabric.

FABRIC AND NOTIONS REQUIREMENTS

1. Main fabric, 160–180 cm wide, in meters:

Height, cm	Size		
	38	40–44	46–54
1 (170–176)	1.2	1.2	1.2
2 (178–184)	1.25	1.25	1.25
3 (186–192)	1.25	1.3	1.3
4 (194–200)	1.3	1.3	1.35

Main fabric, 63–71" wide, in yards:

Height, ft	Size	
	38–44	46–54
1 (5'7"-5'9")	1 1/4	1 1/4
2 (5'10"-6')	1 3/8	1 3/8
3 (6'1"-6'3")	1 3/8	1 3/8
4 (6'4"-6'7")	1 3/8	1 1/2

IMPORTANT! When purchasing fabric, please account for shrinkage and buy 5% more than required.

2. Additional fabric (rib knit), 120 cm (47") wide, for all sizes in all heights — 10 cm (4")

3. Clear elastic for reinforcing the shoulder seams, 0.7–1 cm (1/4–3/8") wide, for all heights:

Size	38	40	42	44	46	48	50	52	54
cm	38.5	39.7	40.9	42.2	43	44	44.9	45.9	46.9
inches	15 1/8	15 5/8	16 1/8	16 5/8	16 7/8	17 3/8	17 5/8	18 1/8	18 1/2

4. Twill tape for the back neckline, 1–1.5 cm (3/8–5/8") wide, for all heights:

Size	38	40	42	44	46	48	50	52	54
cm	25.2	25.6	25.9	26.3	27	27.6	28.2	28.7	29.3
inches	9 7/8	10 1/8	10 1/4	10 3/8	10 5/8	10 7/8	11 1/8	11 1/4	11 1/2

5. Matching thread — 5 spools (1 spool for the sewing machine + 4 spools for the overlocker)

TOOLS AND EQUIPMENT

- sewing machine for construction
- overlocker for stitching and finishing seam allowances. This may be replaced with a stretch overlock stitch or a zigzag stitch on the sewing machine (overlock or zigzag stitch width 2–3 mm, stitch length 2.5 mm)
- coverstitch or coverlock machine for finishing the garment hem and sleeve hems. It can be replaced with a twin needle on a regular sewing machine that can do a zigzag stitch

***IMPORTANT!** We recommend using specialty needles when working with knit fabrics (for example, STRETCH, SUPER STRETCH, JERSEY, etc.). These are ballpoint needles, so they part the threads of the fabric you are stitching without piercing them.*

PATTERN PIECES LIST

1. From main fabric:

- front — cut 1 on fold
- back — cut 1 on fold
- sleeve — cut 2

***IMPORTANT!** Don't forget to transfer all pattern markings and notches onto the fabric.*

2. From additional fabric:

- neckband — cut 1 on fold

SEAM ALLOWANCES

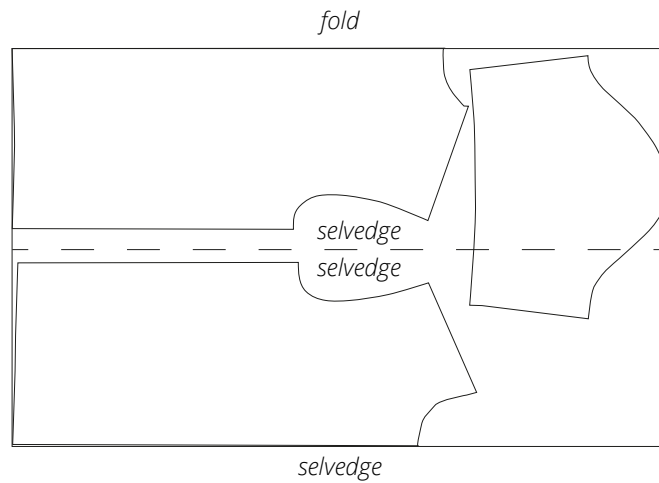
All pattern pieces include seam allowances as follows:

- sleeve and garment hem allowances — 2.5 cm (1")
- all other edges — 1 cm (3/8")

Take this into account when laying out the pattern pieces on the fabric.

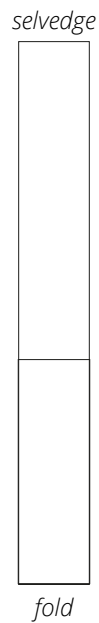
CUTTING LAYOUT

Main fabric, 160–180 cm (63–71") wide, with a directional print/nap, cut with two folds, for all sizes in all heights



Attention! Cut the sleeve pieces out of the leftover fabric.

Additional fabric (rib knit), 120 cm (47") wide, cut on fold, for all sizes in all heights



READY? LET'S GET SEWING!



Press the seam allowances towards the front piece. Press down with a tailor's clapper.



Fold the neckband piece right sides together. Align the short edges and pin. Machine-stitch, backstitching at the beginning and end of the seam.



Press the seam flat. Press the seam allowances open.