

FROM THE FOUNDER OF THE #VIKISEWS BRAND

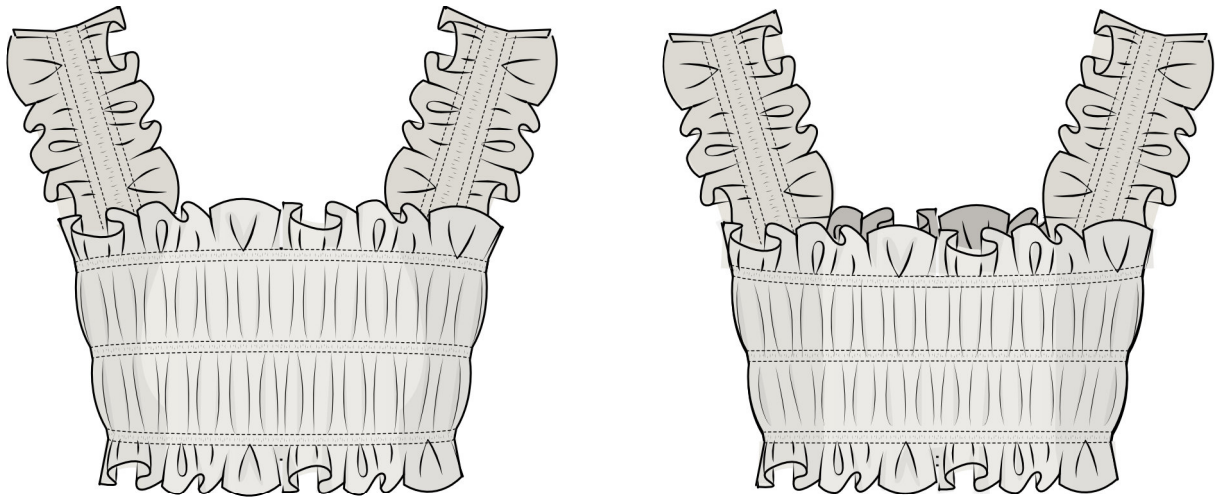


Back in 2016, when I was working on my first set of sewing instructions, I was trying to write them in such a way that even a complete beginner could easily understand and use them to create their very first garment. These instructions laid the foundation for the Vikisews brand, its vision and its mission. I wanted to create modern patterns with the utmost detailed and clear instructions.

Now, with each new collection we are constantly improving our instructions, amending them and adding more relevant details. By the time the final product reaches you, our drafters, correctors, and editors would have spent weeks perfecting every word and every photograph. If you compile a few of our instructions together, you will get a sewing manual that will assist you in sewing all kinds of garments at any difficulty level.

And I would be very happy if these instructions helped you to turn your hobby into a lifelong passion... Enjoy the process! Create your ultimate dream wardrobe! Wear your garments proudly for years to come!

If you have any questions, please contact us at info@vikisews.com — we are always there to help.



ASAI PATTERN DESCRIPTION

Asai is a close-fitting cropped top. The fitting is achieved through elasticated casings. The wide straps feature elasticated casings. The neckline is square. Asai is above-waist length.



IMPORTANT!

The contents of this pattern are copyright protected and belong exclusively to Vikisews. You may use Vikisews patterns for personal use. It is prohibited to share Vikisews patterns and instructions with third parties, as well as to publish patterns and instructions online for public access. **Non-compliance with the mentioned rules is a violation of the US copyright law and may result in civil liability and criminal prosecution.**

You may use Vikisews patterns for commercial use, to sew custom-made garments and/or create fashion collections, on the condition that the patterns are solely used in a manufacturing setting and are not further shared with individuals.

TOTAL EASE ALLOWANCE

Bust ease

cm	55-79
----	-------

inches	21 5/8-31 1/8
--------	---------------

SUGGESTED FABRIC

To sew this top, choose medium-weight, soft, low-stretch, opaque dress-weight fabrics made of natural, artificial, blended, or synthetic fibers.

The following fabrics are recommended: satin, cady, natural or artificial silk, dress-weight viscose.

Attention! We do not recommend stretchy knit fabrics or lightweight sheer fabrics (chiffon, organza, stretch lace).

The top in the photo is made of dress-weight cady. The fabric is medium-weight, soft, and low-stretch. The fiber content is 73% viscose + 27% acetate. The fabric weight is 175 g/m².

FABRIC AND NOTIONS REQUIREMENTS

1. Main fabric, 140 cm wide, with a directional print/nap, in meters:

Height, cm	Size				
	XS	S	M	L	XL
1 (154–160)	0.85	1.1	1.15	1.2	1.55
2 (162–168)	0.85	1.1	1.15	1.2	1.55
3 (170–176)	0.85	1.1	1.15	1.45	1.55
4 (178–184)	0.85	1.1	1.15	1.45	1.55

Main fabric, 55" wide, with a directional print/nap, in yards:

Height, ft	Size			
	XS	S-M	L	XL
1 (5'1"–5'3")	7/8	1 1/4	1 1/4	1 3/4
2 (5'4"–5'6")	7/8	1 1/4	1 1/4	1 3/4
3 (5'7"–5'9")	7/8	1 1/4	1 5/8	1 3/4
4 (5'10"–6'1")	7/8	1 1/4	1 5/8	1 3/4

***IMPORTANT!** When purchasing fabric, please account for shrinkage and buy 5% more than required.*

2. Elastic, 0.5 cm (1/4") wide — 4.5 m (5 yd). The exact elastic length is specified in the pattern
3. Matching thread — 1 spool

TOOLS AND EQUIPMENT

- sewing machine for construction
- elastic threader (may be replaced with a safety pin)

PATTERN PIECES LIST

1. From main fabric:

- front — cut 2 on fold
- back — cut 2 on fold
- strap — cut 2

***IMPORTANT!** Don't forget to transfer all pattern markings and notches onto the fabric.*

2. Templates:

- strap placement template

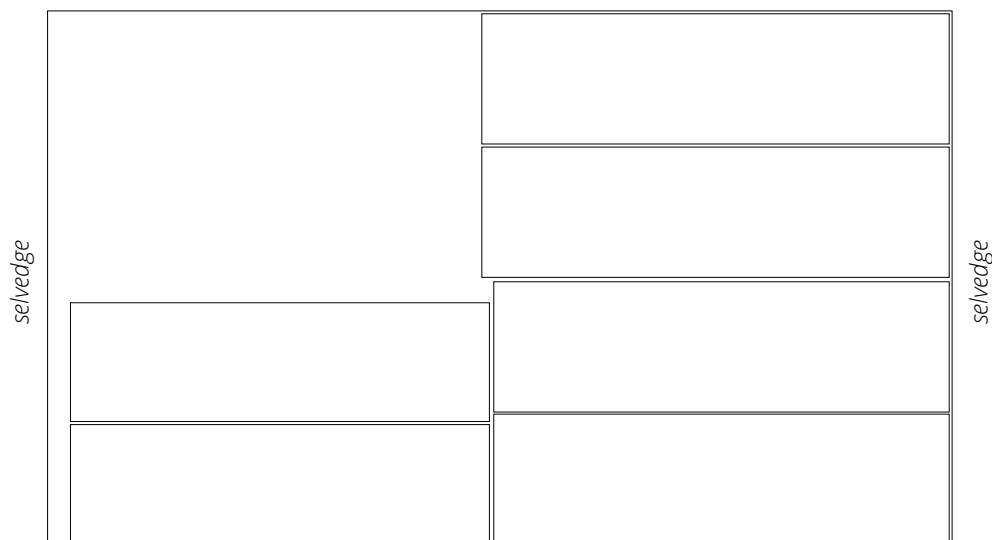
SEAM ALLOWANCES

All pattern pieces include 1 cm (3/8") seam allowances.

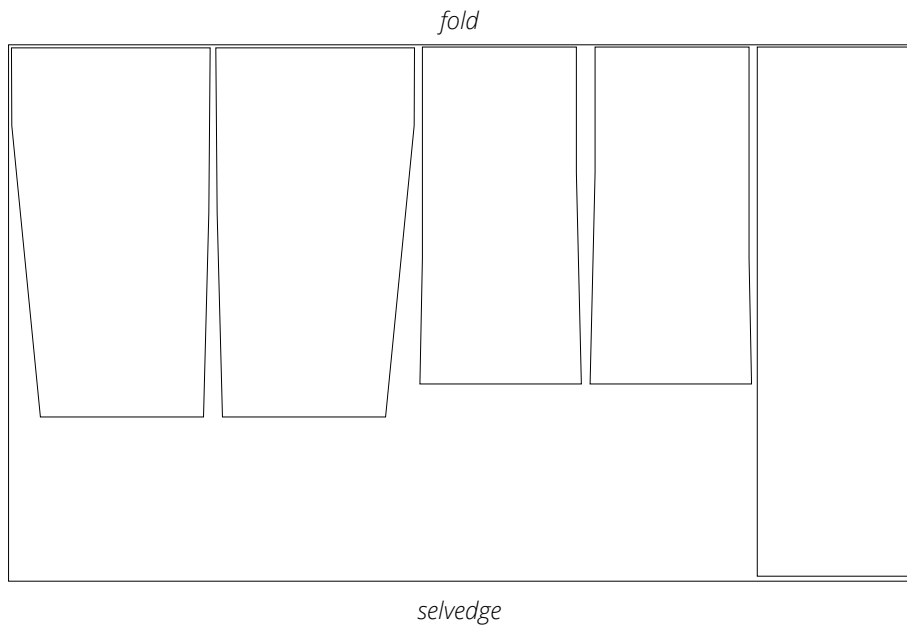
Take this into account when laying out the pattern pieces on the fabric.

CUTTING LAYOUT

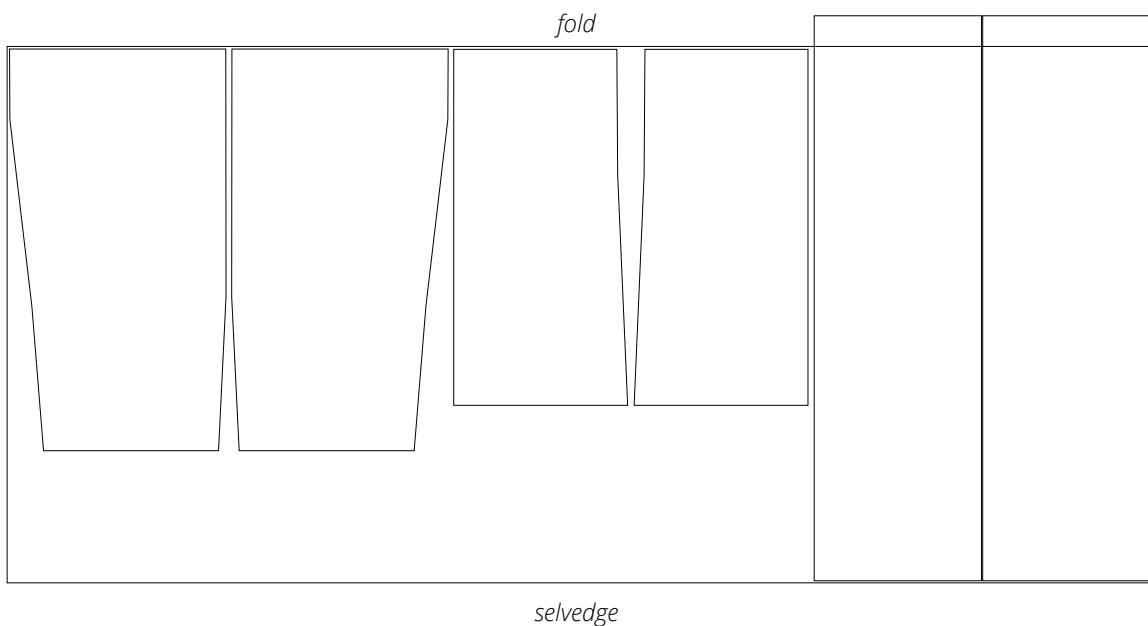
Main fabric, 140 cm (55") wide, with a directional print/nap, cut on a single layer, for size XS in all heights



Main fabric, 140 cm (55") wide, with a directional print/nap, cut on fold,
for sizes S-M in all heights and size L in heights 1-2



Main fabric, 140 cm (55") wide, with a directional print/nap, cut on fold,
for size L in heights 3-4 and size XL in all heights



Attention! Cut the strap pieces on a single layer out of the leftover fabric.

READY? LET'S GET SEWING!



Place the assembled outer and inner pieces right sides together. Align the top edges, match the seams and the notches, and pin.



Machine-stitch, backstitching at the beginning and end of the seam.
Press the seam flat.
Press the seam allowances towards the inner piece.



Working on the right side of the assembled inner piece, understitch the seam allowances at 1–2 mm from the seam.