

# FROM THE FOUNDER OF THE #VIKISEWS BRAND

---

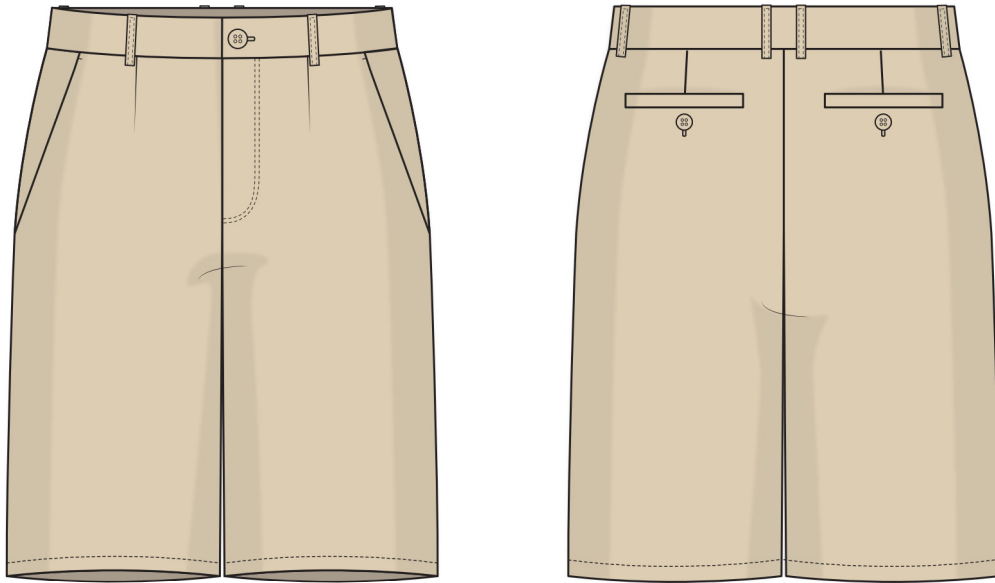


Back in 2016, when I was working on my first set of sewing instructions, I was trying to write them in such a way that even a complete beginner could easily understand and use them to create their very first garment. These instructions laid the foundation for the Vikisews brand, its vision and its mission. I wanted to create modern patterns with the most detailed and clear instructions.

Now, with each new collection we are constantly improving our instructions, amending them and adding more relevant details. By the time the final product reaches you, our drafters, correctors, and editors would have spent weeks perfecting every word and every photograph. If you compile a few of our instructions together, you will get a sewing manual that will assist you in sewing all kinds of garments at any difficulty level.

And I would be very happy if these instructions helped you to turn your hobby into a lifelong passion... Enjoy the process! Create your ultimate dream wardrobe! Wear your garments proudly for years to come!

If you have any questions, please contact us at [info@vikisews.com](mailto:info@vikisews.com) - we are always there to help.



## TROY PATTERN DESCRIPTION

---

Troy is a pair of semi-fitted shorts with a straight silhouette. The front and back legs are fitted with waist darts. The shorts have slash pockets on the front and welt pockets closing with buttons and buttonholes on the back. The applied waistband has belt loops and sits below the natural waistline. The waistband closes with a button and buttonhole. The shorts have a fly front zipper closure and are above-knee length.



## IMPORTANT!

---

The contents of this pattern are copyright protected and belong exclusively to Vikisews. You may use Vikisews patterns for personal use. It is prohibited to share Vikisews patterns and instructions with third parties, as well as to publish patterns and instructions online for public access. **Non-compliance with the mentioned rules is a violation of the US copyright law and may result in civil liability and criminal prosecution.**

You may use Vikisews patterns for commercial use, to sew custom-made garments and/or create fashion collections, on the condition that the patterns are solely used in a manufacturing setting and are not further shared with individuals.

# TOTAL EASE ALLOWANCE

---

	Waistline ease (estimated)	Hipline ease
cm	4.5–2.8	2.7–3.9
inches	1 3/4–1 1/8	1 1/8–1 1/2

# GARMENT LENGTH

---

Height, cm	Garment length including waistband, cm	Height, ft	Garment length including waistband, in
1 (170–176)	53–57	1 (5'7"–5'9")	20 7/8–22 1/2
2 (178–184)	55–59	2 (5'10"–6')	21 5/8–23 1/4
3 (186–192)	57–61	3 (6'1"–6'3")	22 1/2–24
4 (194–200)	59–63	4 (6'4"–6'7")	23 1/4–24 3/4

# FINISHED HEM WIDTH

---

Size	38	40	42	44	46	48	50	52	54
Width, cm	28.5	29	29.5	30	30.4	30.8	31.1	31.4	31.8
Width, in	11 1/4	11 3/8	11 5/8	11 3/4	12	12 1/8	12 1/4	12 3/8	12 1/2

# SUGGESTED FABRIC

---

To sew these shorts, choose soft, non-stretch or low-stretch, medium-weight suiting fabrics made of natural, artificial, blended, or synthetic fibers.

The following fabrics are recommended: suiting fabric, gabardine, denim, ramie, cotton.

For the pocket lining, we recommend using pocket lining fabric, sateen, cotton, poplin.

**Attention!** We do not recommend stretchy knit fabrics.

The shorts in the photo are made of suiting fabric. The fabric is medium weight, soft, and low-stretch. The fiber content is 97% cotton, 3% elastane. The fabric weight is 290 g/m<sup>2</sup>.

The pocket lining is made of 100% cotton. The fabric weight is 120 g/m<sup>2</sup>.

# FABRIC AND NOTIONS REQUIREMENTS

1. Main fabric, 140 cm wide, with a directional print/nap, in meters:

Height, cm	Size						
	38	40	42	44	46	48	50-54
1 (170-176)	1.1	1.1	1.15	1.15	1.15	1.15	1.2
2 (178-184)	1.15	1.15	1.15	1.2	1.2	1.2	1.25
3 (186-192)	1.2	1.2	1.2	1.2	1.25	1.25	1.3
4 (194-200)	1.2	1.25	1.25	1.25	1.25	1.3	1.3

Main fabric, 55" wide, with a directional print/nap, in yards:

Height, ft	Size						
	38	40	42	44	46	48	50-54
1 (5'7"-5'9")	1 1/4	1 1/4	1 1/4	1 1/4	1 1/4	1 1/4	1 1/4
2 (5'10"-6')	1 1/4	1 1/4	1 1/4	1 1/4	1 1/4	1 1/4	1 3/8
3 (6'1"-6'3")	1 1/4	1 1/4	1 1/4	1 1/4	1 3/8	1 3/8	1 3/8
4 (6'4"-6'7")	1 1/4	1 3/8	1 3/8	1 3/8	1 3/8	1 3/8	1 3/8

2. Additional fabric, 140 cm (55") wide, with a directional print/nap, for all heights, in meters/yards:

Size	38-40	42-54
meters	0.45	0.5
yards	1/2	1/2

3. Lightweight interfacing, knit or woven, 140 cm (55") wide, for all heights, in meters/yards:

Size	38	40	42-44	46	48	50-52	54
meters	0.9	0.95	1	1.05	1.1	1.15	1.2
yards	1	1	1 1/8	1 1/8	1 1/4	1 1/4	1 1/4

***IMPORTANT!** When purchasing fabric, please account for shrinkage and buy 5% more than required.*

4. Straight-grain fusible stay tape, 1 cm (3/8") wide — 1.1 m (1 1/4 yd).
5. One trouser zipper, 18 cm (7 1/8") long, for all sizes and heights.
6. One button, 2 cm (3/4") in diameter.
7. Two buttons, 1.6 cm (5/8") in diameter.
8. Matching thread — 5 spools (1 spool for the sewing machine + 4 spools for the overlocker).

## TOOLS AND EQUIPMENT

---

- sewing machine for construction
- buttonhole foot for the sewing machine
- one-sided foot for attaching the zipper
- overlocker for finishing raw edges. This may be replaced with a stretch overlock stitch or a zigzag stitch on the sewing machine (overlock or zigzag stitch width 2–3 mm, stitch length 2.5 mm)

## PATTERN PIECES LIST

---

### 1. From main fabric:

- front leg — cut 2
- back leg — cut 2
- waistband — cut 1
- belt loop — cut 1
- pocket facing — cut 2
- welt — cut 2
- fly shield — cut 1
- fly extension — cut 1
- slash pocket — cut 2

### 2. From additional fabric:

- front pocket lining — cut 2
- back pocket lining — cut 2

***IMPORTANT!** The pattern pieces that have the "face" inscription on them should be placed with the blank side onto the right side of fabric when cutting.*

***IMPORTANT!** Don't forget to transfer all pattern markings and notches onto the fabric.*

### 3. From interfacing:

- welt — cut 2
- fly shield — cut 1
- fly extension — cut 1
- waistband — cut 1

#### Additionally, cut the following from interfacing:

- two pocket interfacing strips (width and length according to the pattern)
- two rectangles, 3×2 cm (1 1/8–3/4"), for interfacing the buttonhole area
- two strips, 2.5 cm (1") wide (length according to the pattern), to interface the fly seam allowances on the front leg pieces

The interfacing strips should be cut on the straight grain (parallel to the selvedge).

## SEAM ALLOWANCES

---

#### All pattern pieces include seam allowances as follows:

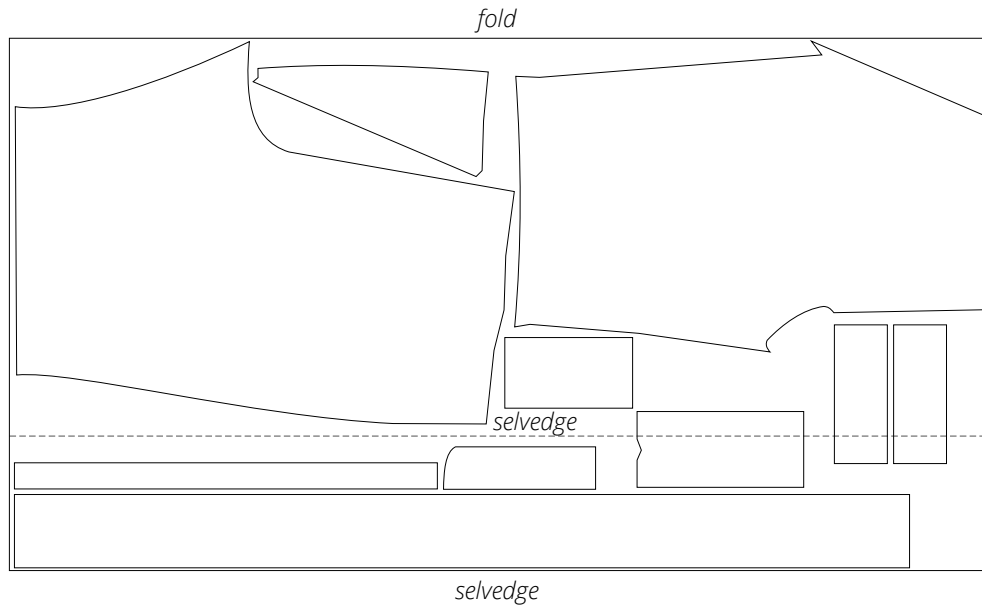
- garment hem allowance — 3 cm (1 1/8")
- side edges of the pocket facing and front pocket lining pieces — 1 cm (3/8")
- back pockets lining pieces — 1.5 cm (5/8")
- all other edges — 1 cm (3/8")

Take this into account when laying out the pattern pieces on the fabric.

# CUTTING LAYOUT

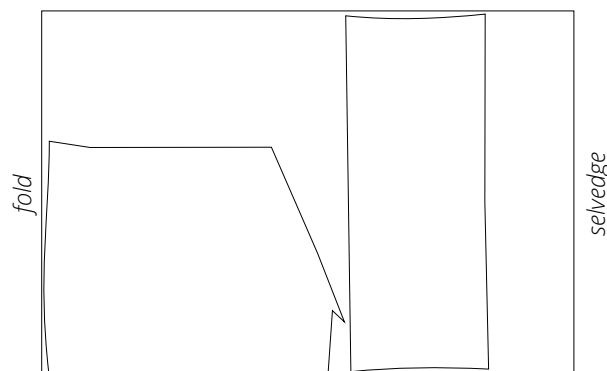
---

Main fabric, 140 cm (55") wide, with a directional print/nap, cut on a partial fold, for all sizes in all heights

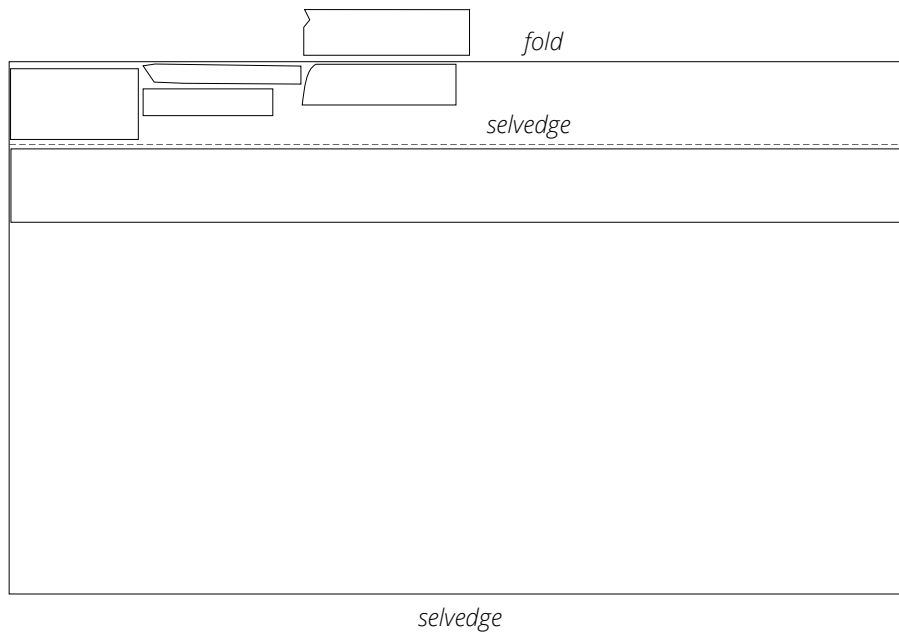


**Attention!** Cut the pocket facing and fly shield pieces on a single layer out of the leftover fabric. Cut only one fly shield piece. The pocket facing pieces are cut in pair.

Additional fabric, 140 cm (55") wide, with a directional print/nap, cut on fold, for all sizes in all heights



Interfacing, 140 cm (55") wide, cut on a partial fold,  
for all sizes in all heights



**Attention!** Cut only one fly shield piece and one fly extension piece.

**READY? LET'S GET SEWING!**

---



Press the darts towards the center edge. Shrink out the fullness at the dart points.



Using tailor's chalk, transfer the slash pocket placement line from the pattern to the front pocket lining piece. Chalk-mark an auxiliary line at 1 cm (3/8") from the slash pocket placement line towards the pocket opening.



Place the slash pocket and front pocket lining pieces right sides together, align the long slash pocket edge with the auxiliary line, and pin.