

# FROM THE FOUNDER OF THE VIKISEWS® BRAND

---



Back in 2016, when I started making my first sewing patterns and instruction manuals, my main goal was to solve the problems I personally faced at the beginning of my sewing journey: the lack of stylish patterns that provide a great fit and contain clear sewing instructions. That's how Vikisews was born—a brand designed to help you create fashionable, on-trend clothing with your own hands.



The sewing instructions we create is the result of our team's careful, meticulous work. May they help you develop your sewing hobby—or even turn it into your life's work! Enjoy every step of the sewing process and create a thoughtful, stylish wardrobe!

If you have any questions, we're always here to help: [info@vikisews.com](mailto:info@vikisews.com)



## DALIDA PATTERN DESCRIPTION

---

Dalida is a semi-fitted skirt with a straight silhouette. The back is fitted with waist darts and a center seam. The skirt features no waistband, with the top edge finished with binding. There is an invisible zipper closure in the center back seam. The bottom edge is finished with lace. Dalida is above-knee length.



## PLEASE READ BEFORE USE

---

The contents of this pattern are copyright protected and belong exclusively to Vikisews. You may use Vikisews patterns for personal use. It is prohibited to share Vikisews patterns and instructions with third parties, as well as to publish patterns and instructions online for public access. **Non-compliance with the mentioned rules is a violation of the US copyright law and may result in civil liability and criminal prosecution.**

You may use Vikisews patterns for commercial use, to sew custom-made garments and/or create fashion collections, on the condition that the patterns are solely used in a manufacturing setting and are not further shared with individuals.

# TOTAL EASE ALLOWANCE

---

	Waistline ease (estimated)	Hipline ease
cm	2–2.6	1.4–2
inches	3/4–1	1/2–3/4

# GARMENT LENGTH

---

Height, cm	Garment length, cm	Height, ft	Garment length, in
1 (154–160)	38.5	1 (5'1"–5'3")	15 1/8
2 (162–168)	41.5	2 (5'4"–5'6")	16 3/8
3 (170–176)	44.5	3 (5'7"–5'9")	17 1/2
4 (178–184)	47.5	4 (5'10"–6'1")	18 3/4

# SUGGESTED FABRICS

---

To sew this skirt, choose medium-weight, soft, low-stretch, opaque dress-weight fabrics made of natural, artificial, blended, or synthetic fibers.

The following fabrics are recommended: satin, cady, natural or artificial silk, dress-weight viscose.

The following additional fabrics are recommended: narrow lace trim, lace fabrics, embroidered mesh, guipure lace.

**Attention!** We do not recommend stretchy knit fabrics or lightweight sheer fabrics such as chiffon, organza, and stretch lace.

The skirt in the photo is made of artificial silk. The fabric is medium weight, soft, and non-stretch. The fiber content is 100% polyester. The fabric weight is 150 g/m<sup>2</sup>.

The additional fabric is lace fabric. The fabric is soft and non-stretch. The fiber content is 100% synthetic fibers. The fabric weight is 90 g/m<sup>2</sup>.

# FABRIC AND NOTIONS REQUIREMENTS

1. Main fabric, 140 cm wide, with a directional print/nap, in meters:

Height, cm	Size	
	34-42	44-52
1 (154-160)	0.45	0.5
2 (162-168)	0.5	0.5
3 (170-176)	0.55	0.55
4 (178-184)	0.55	0.55

Main fabric, 55" wide, with a directional print/nap, in yards:

Height, ft	Size	
	34-42	44-52
1 (5'1"-5'3")	1/2	1/2
2 (5'4"-5'6")	1/2	1/2
3 (5'7"-5'9")	5/8	5/8
4 (5'10"-6'1")	5/8	5/8

2. Additional fabric (lace), 25 cm (10") wide, 90-120 g/m<sup>2</sup>, for all heights:

Size	34	36	38	40-42	44	46-48	50	52
meters	0.9	0.95	1	1.1	1.15	1.2	1.25	1.3
yards	1	1	1 1/8	1 1/4	1 1/4	1 1/4	1 3/8	1 3/8

**IMPORTANT!** When purchasing fabric, please account for shrinkage and buy 5% more than required.

3. Lightweight interfacing, knit or woven, 140 cm (55") wide, for all sizes in all heights — 5 cm (2")
4. Stitched bias-cut fusible stay tape with stitch reinforcement, 1.5 cm (5/8") wide — 50-60 cm (20-24")
5. One invisible zipper, 20-25 cm (8-10") long
6. One hook-and-eye closure, size S1
7. Matching thread — 5 spools (1 spool for the sewing machine + 4 spools for the overlocker)

# TOOLS AND EQUIPMENT

---

- sewing machine for construction
- overlocker for finishing raw edges This may be replaced with a stretch overlock stitch or a zigzag stitch on the sewing machine (overlock or zigzag stitch width 2–3 mm stitch length 2.5 mm)
- stitch-in-the-ditch foot for the sewing machine (optional)
- invisible zipper foot for the sewing machine
- one-sided foot for the sewing machine

# PATTERN PIECES LIST

---

## 1. From main fabric:

- front — cut 1 on fold
- back — cut 2
- waist binding — cut 1

***IMPORTANT!** Don't forget to transfer all pattern markings and notches onto the fabric.*

## 2. From interfacing:

- waist binding — cut 1

# SEAM ALLOWANCES

---

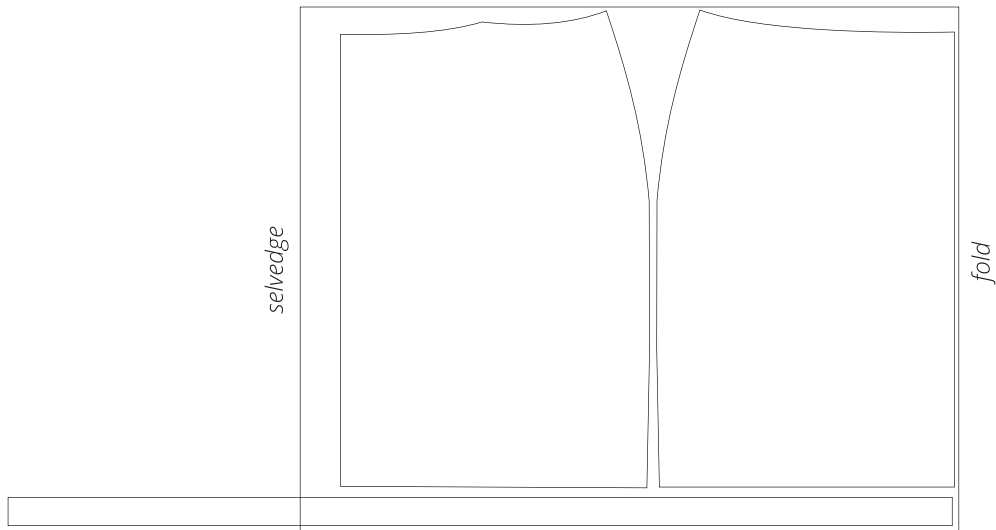
All pattern pieces include 1 cm (3/8") seam allowances.

**Important!** There is no seam allowance at the bottom edge of the garment. Take this into account when laying out the pieces on the fabric.

# CUTTING LAYOUT

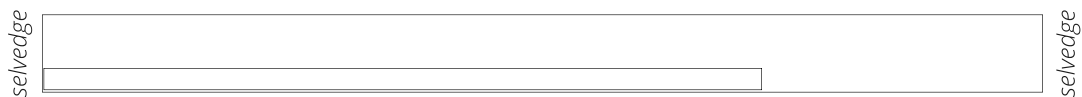
---

Main fabric, 140 cm (55") wide, with a directional print/nap, cut on fold, for all sizes in all heights



**Attention!** Cut only one waist binding piece on a single layer.

Interfacing, 140 cm (55") wide, cut on a single layer, for all sizes in all heights



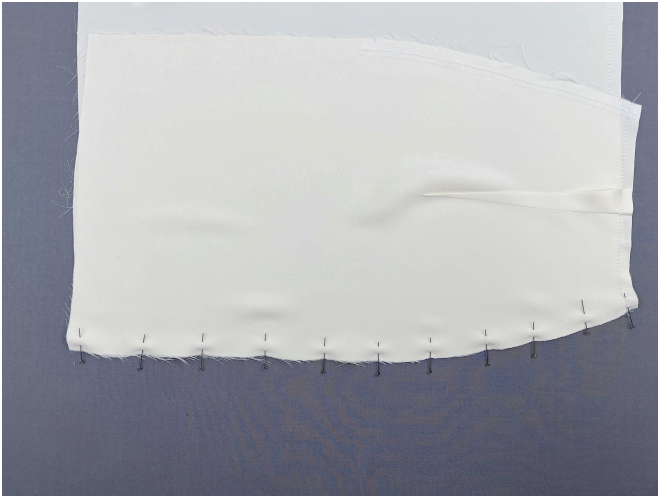
**READY? LET'S GET SEWING!**

---



6. Staystitch along the top edge of the front and back pieces.

**Important!** Staystitch without backstitching, at 5 mm (just under 1/4") from the edge. Use thread matching the fabric color and a 2.5–3 mm stitch length.



7. Place the front and back pieces right sides together. Align the side edges, match the notches, and pin.

8. Machine-stitch, backstitching at the beginning and end of the seam.



9. Overlock the center back edge on the back piece, with the right side facing up. Press the seam.