

FROM THE FOUNDER OF THE VIKISEWS® BRAND

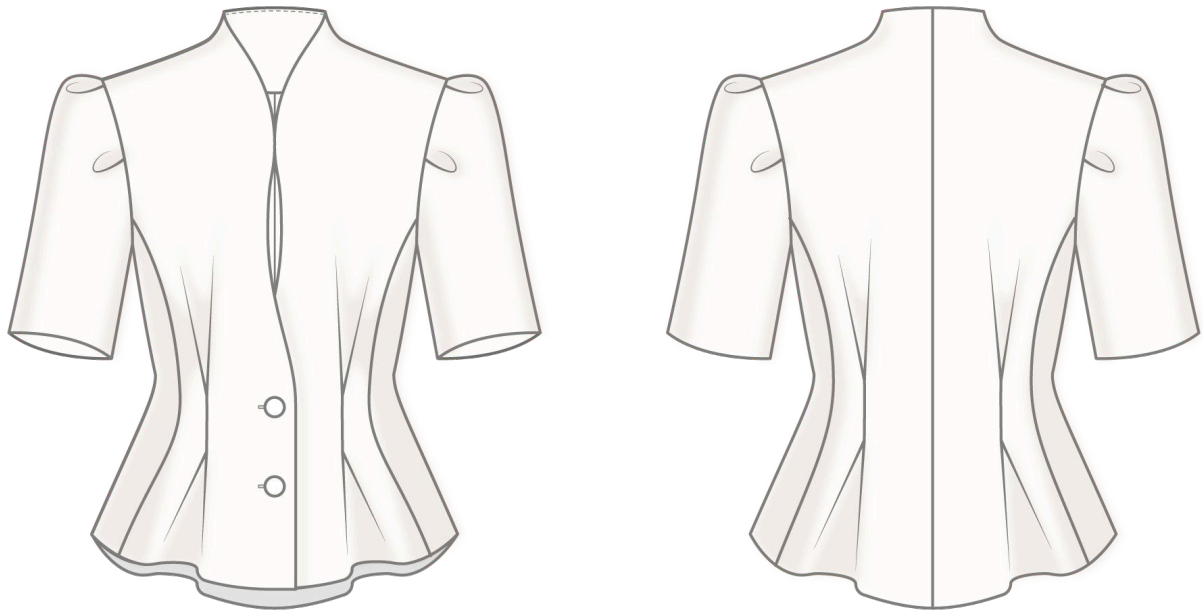


Back in 2016, when I started making my first sewing patterns and instruction manuals, my main goal was to solve the problems I personally faced at the beginning of my sewing journey: the lack of stylish patterns that provide a great fit and contain clear sewing instructions. That's how Vikisews was born—a brand designed to help you create fashionable, on-trend clothing with your own hands.



The sewing instructions we create is the result of our team's careful, meticulous work. May they help you develop your sewing hobby—or even turn it into your life's work! Enjoy every step of the sewing process and create a thoughtful, stylish wardrobe!

If you have any questions, we're always here to help: info@vikisews.com



SILVANA PATTERN DESCRIPTION

Silvana is a semi-fitted, lined blazer with an accentuated waist. The back has a center seam. The front and back feature inverted box pleats. The short set-in sleeves have four pleats at the top of the sleeve cap. The blazer closes with buttons and buttonholes at the center front and a hook and eye above the bust. The grown-on stand collar forms a shaped neckline. Silvana is above-hip length.



PLEASE READ BEFORE USE

The contents of this pattern are copyright protected and belong exclusively to Vikisews. You may use Vikisews patterns for personal use. It is prohibited to share Vikisews patterns and instructions with third parties, as well as to publish patterns and instructions online for public access. **Non-compliance with the mentioned rules is a violation of the US copyright law and may result in civil liability and criminal prosecution.**

You may use Vikisews patterns for commercial use, to sew custom-made garments and/or create fashion collections, on the condition that the patterns are solely used in a manufacturing setting and are not further shared with individuals.

TOTAL EASE ALLOWANCE

	Bust ease	Waistline ease	Hipline ease	Upper arm ease
cm	10.6–12.3	3.6–5.9	39.7–52.4	7.4–12.3
inches	4 1/8–4 7/8	1 3/8–2 3/8	15 5/8–20 5/8	2 7/8–4 7/8

GARMENT LENGTH, SLEEVE LENGTH

Height, cm	Back length, cm	Sleeve length, cm
1 (154–160)	56.1–64.9	27.7–32.8
2 (162–168)	58.6–67.4	29.2–34.3
3 (170–176)	61.1–69.9	30.8–36
4 (178–184)	63.6–72.4	32.3–37.5

Height, ft	Back length, in	Sleeve length, in
1 (5'1"–5'3")	22 1/8–25 1/2	10 7/8–12 7/8
2 (5'4"–5'6")	23 1/8–26 1/2	11 1/2–13 1/2
3 (5'7"–5'9")	24–27 1/2	12 1/8–14 1/8
4 (5'10"–6'1")	25–28 1/2	12 3/4–14 3/4

SUGGESTED FABRICS

To sew this blazer, choose medium-weight, structured, non-stretch or low-stretch, opaque suiting fabrics made of natural, artificial, blended, or synthetic fibers.

The following fabrics are recommended: suiting fabrics, gabardine.

Attention! We do not recommend stretchy knit fabrics, soft, lightweight fabrics, or fabrics with a loose structure.

The blazer in the photo is made of suiting fabric. The fabric is medium weight, pliable, and low-stretch. The fiber content is 87% polyester, 13% acetate. The fabric weight is 325 g/m².

The lining is made of 54% polyester and 46% viscose. The fabric weight is 95 g/m².

FABRIC AND NOTIONS REQUIREMENTS

1. Main fabric, 140 cm wide, with a directional print/nap, in meters:

Height, cm	Size							
	34-36	38	40-42	44	46	48	50	52
1 (154-160)	1.15	1.2	1.25	1.3	1.35	1.4	1.5	1.6
2 (162-168)	1.2	1.25	1.3	1.35	1.4	1.5	1.6	1.75
3 (170-176)	1.25	1.3	1.35	1.45	1.5	1.6	1.75	1.85
4 (178-184)	1.3	1.35	1.4	1.5	1.6	1.75	1.85	1.9

Main fabric, 55" wide, with a directional print/nap, in yards:

Height, ft	Size							
	34-36	38	40-42	44	46	48	50	52
1 (5'1"-5'3")	1 1/4	1 1/4	1 3/8	1 3/8	1 1/2	1 1/2	1 5/8	1 3/4
2 (5'4"-5'6")	1 1/4	1 3/8	1 3/8	1 1/2	1 1/2	1 5/8	1 3/4	1 7/8
3 (5'7"-5'9")	1 3/8	1 3/8	1 1/2	1 5/8	1 5/8	1 3/4	1 7/8	2
4 (5'10"-6'1")	1 3/8	1 1/2	1 1/2	1 5/8	1 3/4	1 7/8	2	2 1/8

2. Lining fabric, 140 cm wide, with a directional print, in meters:

Height, cm	Size					
	34-36	38-40	42	44	46-48	50-52
1 (154-160)	0.9	0.95	1	1.2	1.25	1.3
2 (162-168)	0.95	1	1	1.25	1.3	1.35
3 (170-176)	1	1	1.05	1.3	1.35	1.4
4 (178-184)	1	1.05	1.1	1.35	1.4	1.45

Lining fabric, 55" wide, with a directional print, in yards:

Height, ft	Size					
	34-36	38-40	42	44	46-48	50-52
1 (5'1"-5'3")	1	1	1 1/8	1 1/4	1 3/8	1 3/8
2 (5'4"-5'6")	1	1 1/8	1 1/8	1 3/8	1 3/8	1 1/2
3 (5'7"-5'9")	1 1/8	1 1/8	1 1/8	1 3/8	1 1/2	1 1/2
4 (5'10"-6'1")	1 1/8	1 1/8	1 1/4	1 1/2	1 1/2	1 5/8

3. Lightweight interfacing, knit or woven, 140 cm wide, in meters:

Height, cm	Size						
	34-36	38	40-42	44	46-48	50	52
1 (154-160)	1	1.1	1.2	1.25	1.4	1.4	1.45
2 (162-168)	1.05	1.15	1.25	1.3	1.45	1.45	1.5
3 (170-176)	1.1	1.25	1.3	1.35	1.45	1.5	1.55
4 (178-184)	1.15	1.3	1.35	1.4	1.45	1.55	1.6

Lightweight interfacing, knit or woven, 55" wide, in yards:

Height, ft	Size						
	34-36	38	40-42	44	46-48	50	52
1 (5'1"-5'3")	1 1/8	1 1/4	1 1/4	1 3/8	1 1/2	1 1/2	1 5/8
2 (5'4"-5'6")	1 1/8	1 1/4	1 3/8	1 3/8	1 5/8	1 5/8	1 5/8
3 (5'7"-5'9")	1 1/4	1 3/8	1 3/8	1 1/2	1 5/8	1 5/8	1 3/4
4 (5'10"-6'1")	1 1/4	1 3/8	1 1/2	1 1/2	1 5/8	1 3/4	1 3/4

IMPORTANT! When purchasing fabric, please account for shrinkage and buy 5% more than required.

4. Stitched bias-cut fusible stay tape with stitch reinforcement, 1 cm (3/8") wide — 1.3-1.8 m (1 3/8-2 yd), depending on the size

5. Two buttons, 18 mm (3/4") in diameter

6. One S1 hook-and-eye closure

7. Matching thread — 1 spool

TOOLS AND EQUIPMENT

- sewing machine for construction
- buttonhole foot for the sewing machine
- stitch-in-the-ditch foot for the sewing machine (optional)

PATTERN PIECES LIST

1. From main fabric:

- side front — cut 2
- center front — cut 2
- sleeve — cut 2
- back — cut 2
- back neck facing — cut 2
- front facing — cut 2

2. From lining fabric:

- side front lining — cut 2
- center front lining — cut 2
- sleeve lining — cut 2
- back lining — cut 2

***IMPORTANT!** Don't forget to transfer all pattern markings and notches onto the fabric.*

3. From interfacing:

- center front — cut 2
- side front — cut 2
- back — cut 2
- front facing — cut 2
- back neck facing — cut 2

Additionally, cut the following from interfacing:

- two strips 4 cm (1 5/8") wide (length according to the pattern), to interface the sleeve hem allowances
- top part of the sleeve according to the pattern markings

The interfacing strips should be cut on the straight grain (parallel to the selvedge).

SEAM ALLOWANCES

All pattern pieces include seam allowances as follows:

- garment hem allowance — 3 cm (1 1/8")
- sleeve hem allowance — 3 cm (1 1/8")
- all other edges — 1 cm (3/8")

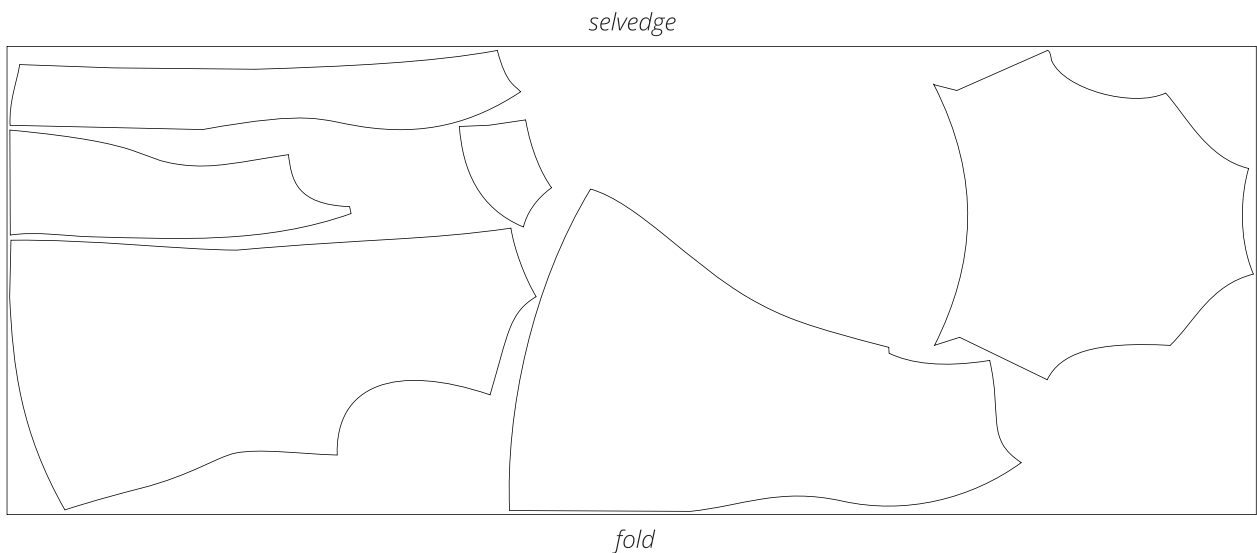
Take this into account when laying out the pattern pieces on the fabric.

CUTTING LAYOUT

Main fabric, 140 cm (55") wide, with a directional print/nap, cut on fold,
for sizes 34–40 in all heights



Main fabric, 140 cm (55") wide, with a directional print/nap, cut on fold,
for sizes 42–52 in all heights



Lining fabric, 140 cm (55") wide, with a directional print, cut on fold,
for sizes 34–42 in all heights

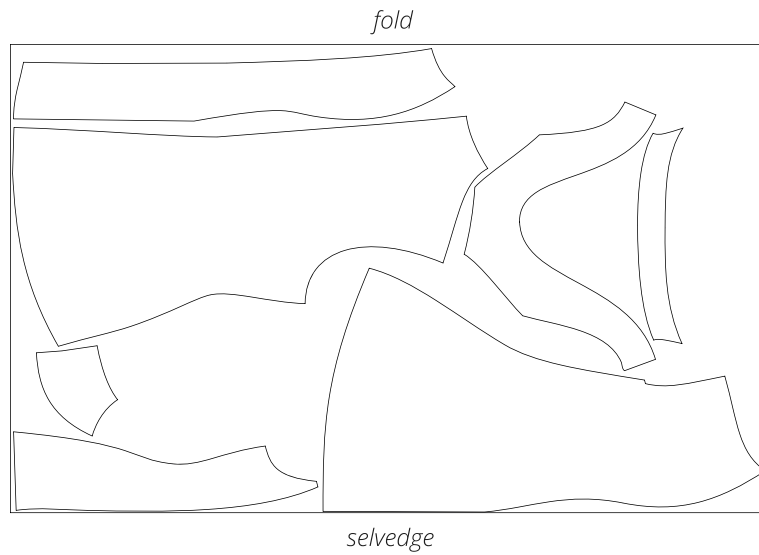


Lining fabric, 140 cm (55") wide, with a directional print, cut on fold,
for sizes 44–52 in all heights

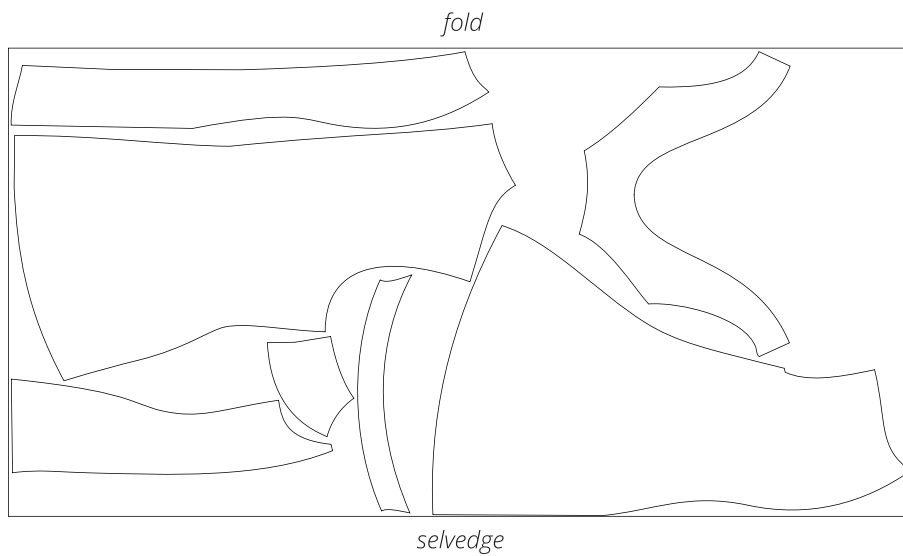


Attention! Cut the sleeve pieces on a single layer out of the leftover fabric.

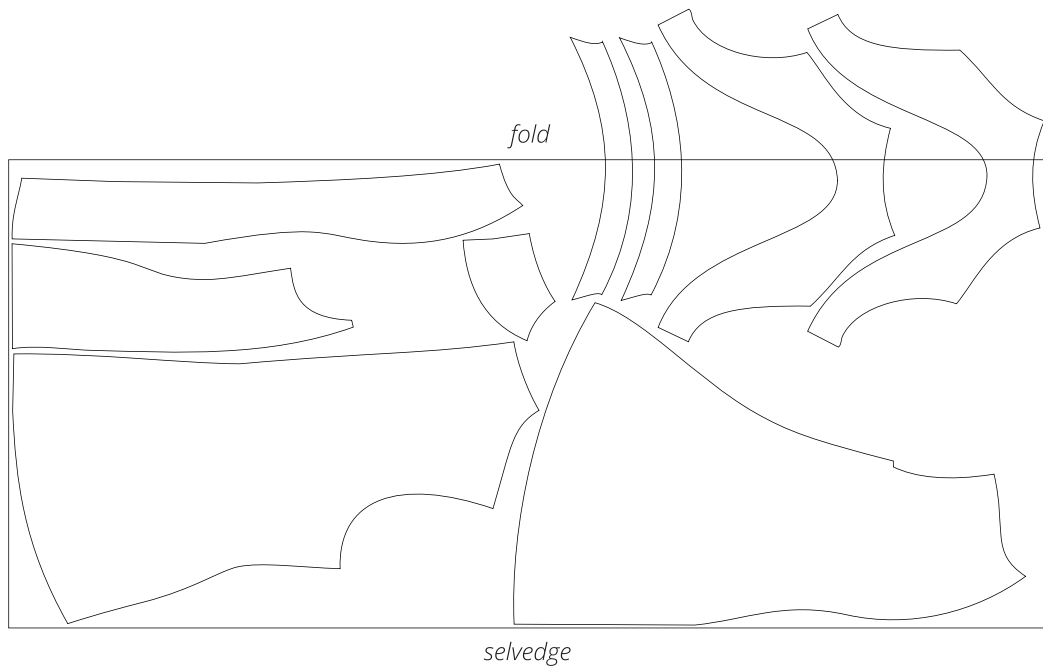
Interfacing, 140 cm (55") wide, cut on fold,
for sizes 34–36 in all heights



Interfacing, 140 cm (55") wide, cut on fold,
for sizes 38–44 in all heights



Interfacing, 140 cm (55") wide, cut on fold,
for sizes 46–52 in all heights

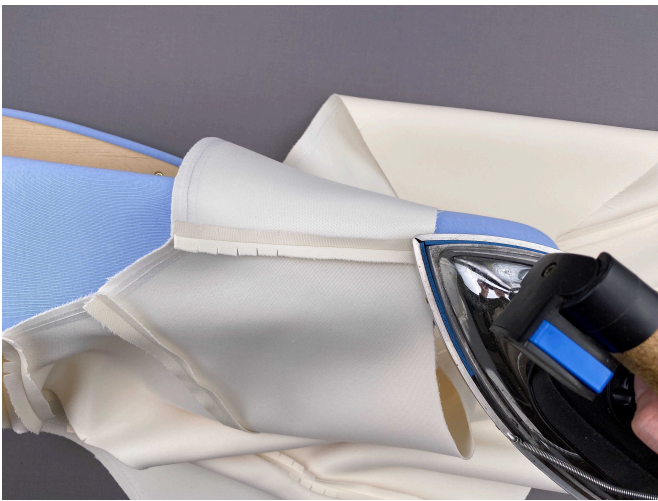


Attention! Templates for interfacing the sleeve pieces are cut on a single layer out of the leftover fabric.

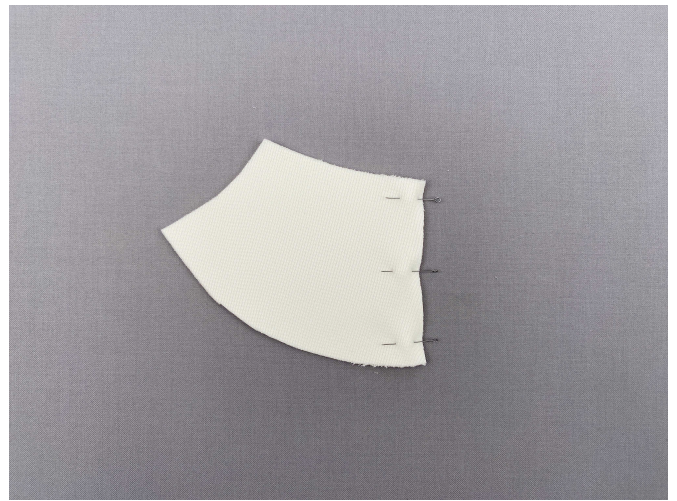
READY? LET'S GET SEWING!



10. Machine-stitch, backstitching at the beginning and end of the seam. Clip into the curved sections of the shoulder seam allowances, stopping 2 mm short of the seam.



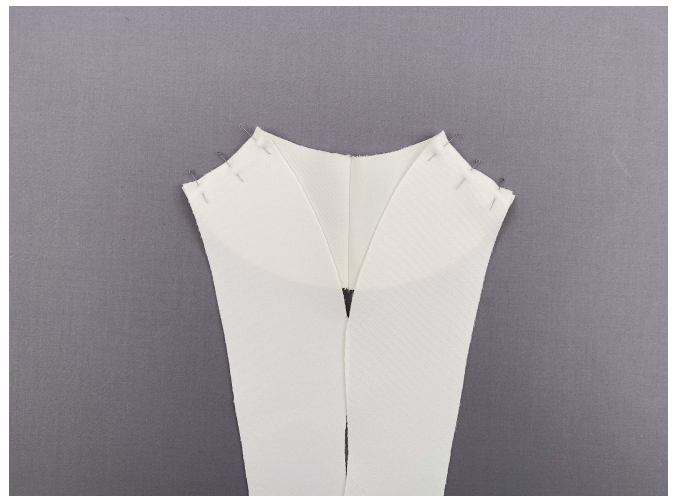
11. Press the shoulder seam allowances open.



12. Place the back neck facing pieces right sides together. Align the center edges, match the notches, and pin.



13. Machine-stitch, backstitching at the beginning and end of the seam. Press the seam allowances open.



14. Place the back neck facing and the front facing pieces right sides together. Align the shoulder edges and pin.