

FROM THE FOUNDER OF THE #VIKISEWS BRAND

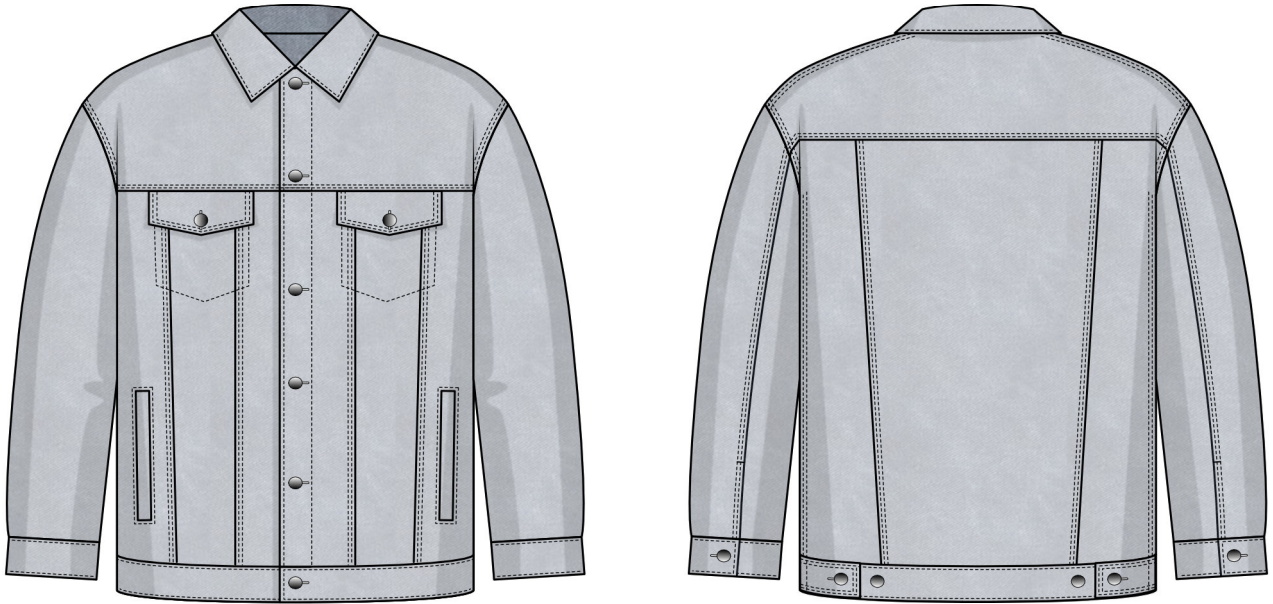


Back in 2016, when I was working on my first set of sewing instructions, I was trying to write them in such a way that even a complete beginner could easily understand and use them to create their very first garment. These instructions laid the foundation for the Vikisews brand, its vision and its mission. I wanted to create modern patterns with the most detailed and clear instructions.

Now, with each new collection we are constantly improving our instructions, amending them and adding more relevant details. By the time the final product reaches you, our drafters, correctors, and editors would have spent weeks perfecting every word and every photograph. If you compile a few of our instructions together, you will get a sewing manual that will assist you in sewing all kinds of garments at any difficulty level.

And I would be very happy if these instructions helped you to turn your hobby into a lifelong passion... Enjoy the process! Create your ultimate dream wardrobe! Wear your garments proudly for years to come!

If you have any questions, please contact us at info@vikisews.com - we are always there to help.



FRANK PATTERN DESCRIPTION

Frank is a loose-fitting jacket with a straight silhouette. The front and back have applied yokes and princess seams. On the front, there are welt pockets with sewn-in ends and inner patch pockets with flaps that close with stud buttons and buttonholes. The shirt collar has a separate collar stand. The long shirt sleeves are made up of two pieces. The cuffs have a stud button and buttonhole closure. The jacket has a grown-on center front placket with a stud button and buttonhole closure. The bottom edge of the jacket features an applied waistband with two tabs with a stud button and buttonhole closure. All seams are topstitched. Frank is hip-length.



IMPORTANT!

The contents of this pattern are copyright protected and belong exclusively to Vikisews. You may use Vikisews patterns for personal use. It is prohibited to share Vikisews patterns and instructions with third parties, as well as to publish patterns and instructions online for public access. **Non-compliance with the mentioned rules is a violation of the US copyright law and may result in civil liability and criminal prosecution.**

You may use Vikisews patterns for commercial use, to sew custom-made garments and/or create fashion collections, on the condition that the patterns are solely used in a manufacturing setting and are not further shared with individuals.

TOTAL EASE ALLOWANCE

	Chest ease	Waistline ease	Hipline ease	Upper arm ease
cm	27.3–24.9	34.5–29.7	9.1–11.1	24.5–17.9
inches	10 3/4–9 3/4	13 5/8–11 3/4	3 5/8–4 3/8	9 5/8–7

GARMENT LENGTH, SLEEVE LENGTH

Height, cm	Back length including waistband width, cm	Sleeve length including shoulder width and cuff, cm
1 (170–176)	70.6	81.9–84.1
2 (178–184)	73.6	84.1–86.2
3 (186–192)	76.6	86.2–88.4
4 (194–200)	79.6	88.4–90.6

Height, ft	Back length including waistband width, in	Sleeve length including shoulder width and cuff, in
1 (5'7"–5'9")	27 3/4	32 1/4–33 1/8
2 (5'10"–6')	29	33 1/8–33 7/8
3 (6'1"–6'3")	30 1/8	33 7/8–34 3/4
4 (6'4"–6'7")	31 3/8	34 3/4–35 5/8

SUGGESTED FABRIC

To sew this jacket, choose heavyweight or medium-weight, non-stretch or low-stretch outerwear fabrics made of natural, artificial, blended, or synthetic fibers.

The following fabrics are recommended: corduroy, denim.

For the pocket lining, use pocket lining fabric, sateen, cotton, or poplin.

Attention! We do not recommend stretchy knit fabrics.

The jacket in the photo is made of denim. The fabric is medium weight and low-stretch. The fiber content is 100% cotton. The fabric weight is 300 g/m².

The pocket lining is made of 100% cotton. The fabric weight is 120 g/m².

FABRIC AND NOTIONS REQUIREMENTS

1. Main fabric, 140 cm wide, with a directional print/nap, in meters:

Height, cm	Size		
	38-42	44-48	50-54
1 (170-176)	1.95	2	2.15
2 (178-184)	2	2.05	2.2
3 (186-192)	2.05	2.1	2.3
4 (194-200)	2.1	2.15	2.35

Main fabric, 55" wide, with a directional print/nap, in yards:

Height, ft	Size		
	38-42	44-48	50-54
1 (5'7"-5'9")	2 1/8	2 1/8	2 3/8
2 (5'10"-6')	2 1/8	2 1/4	2 3/8
3 (6'1"-6'3")	2 1/4	2 1/4	2 1/2
4 (6'4"-6'7")	2 1/4	2 3/8	2 5/8

Main fabric, 150 cm wide, with a directional print/nap, in meters:

Height, cm	Size		
	38-42	44-48	50-54
1 (170-176)	1.85	1.9	2
2 (178-184)	1.9	1.95	2.05
3 (186-192)	1.95	2	2.1
4 (194-200)	2	2.05	2.2

Main fabric, 59" wide, with a directional print/nap, in yards:

Height, ft	Size		
	38-42	44-48	50-54
1 (5'7"-5'9")	2	2 1/8	2 1/8
2 (5'10"-6')	2 1/8	2 1/8	2 1/4
3 (6'1"-6'3")	2 1/8	2 1/8	2 1/4
4 (6'4"-6'7")	2 1/8	2 1/4	2 3/8

IMPORTANT! If you choose the fabric that gets a stone-washed effect after washing, choose fabric amounts based on a size and height larger than your own, as the fabric shrinks. After sewing, wash the finished garment 1–2 times.

2. Lightweight interfacing, knit or woven, 140 cm (55") wide, for all heights:

Size	38	40–42	44	46–48	50	52–54
meters	1.15	1.2	1.25	1.3	1.35	1.4
yards	1 1/4	1 1/4	1 3/8	1 3/8	1 1/2	1 1/2

IMPORTANT! When purchasing fabric, please account for shrinkage and buy 5% more than required.

3. Additional fabric, 140 cm (55") wide, with a directional print/nap, for all sizes in all heights — 0.25 m (1/4 yd)

4. Fourteen metal stud buttons for denim, 1.5 cm (5/8") in diameter (+1–2 spare)

5. Matching (or contrasting) topstitching thread — 3–4 spools (depending on size)

6. Matching thread — 5 spools (1 spool for the sewing machine + 4 spools for the overlocker)

TOOLS AND EQUIPMENT

- sewing machine for construction
- overlocker for finishing raw edges. This may be replaced with a stretch overlock stitch or a zigzag stitch on the sewing machine (overlock or zigzag stitch width 2–3 mm, stitch length 2.5 mm)
- buttonhole foot for the sewing machine
- press tool for installing buttons and grommets with a set of molds
- hole puncher or awl

PATTERN PIECES LIST

1. From main fabric:

- center front — cut 2
- middle front — cut 2
- side front— cut 2
- front yoke — cut 2
- center back — cut 1 on fold
- side back — cut 2
- back yoke — cut 1 on fold
- top sleeve — cut 2
- bottom sleeve — cut 2
- waistband — cut 1
- waistband tab — cut 4
- cuff — cut 2
- pocket — cut 2
- top flap — cut 2
- bottom flap — cut 2
- chest pocket facing — cut 2
- upper collar — cut 1 on fold
- undercollar — cut 1 on fold
- collar stand — cut 2
- welt — cut 2
- welt pocket facing — cut 2
- pocket lining — cut 2

2. From additional fabric:

- pocket lining — cut 2

IMPORTANT! Don't forget to transfer all pattern markings and notches onto the fabric.

3. From interfacing:

- waistband — cut 1 (1/2 of the width)
- waistband tab – cut 2
- cuff — cut 2 (1/2 of the width)
- top flap — cut 2
- chest pocket facing — cut 2
- upper collar — cut 1 on fold
- undercollar — cut 1 on fold
- collar stand — cut 2
- welt — cut 2

Additionally, cut the following from interfacing:

- two interfacing strips for reinforcing the pocket opening area, width and length according to the pattern
- four interfacing strips, 9.5 cm (3 3/4") wide and the length according to the pattern, to interface the grown-on placket area on the center front and front yoke pieces

The interfacing strips should be cut on the straight grain (parallel to the selvedge).

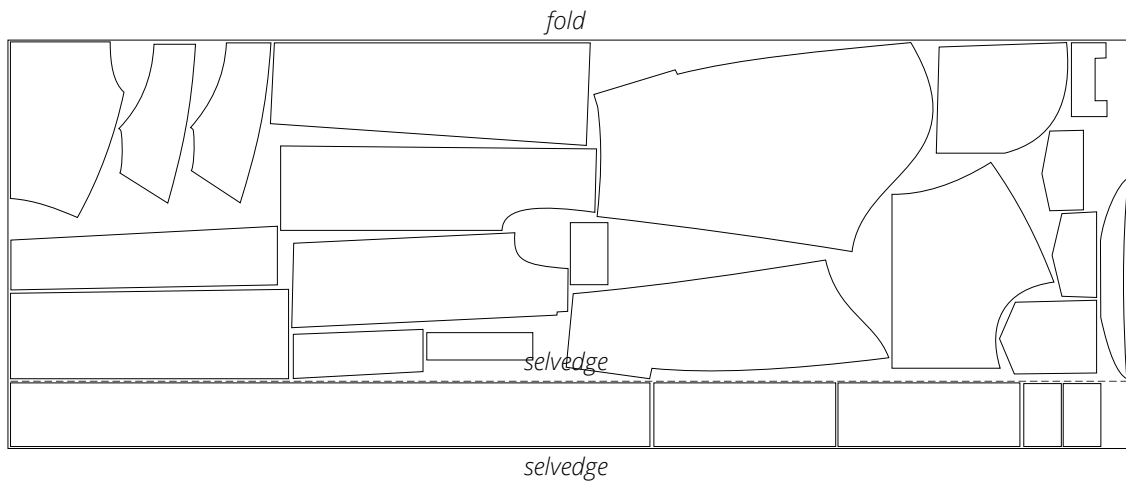
SEAM ALLOWANCES

All pattern pieces include 1 cm (3/8") seam allowances.

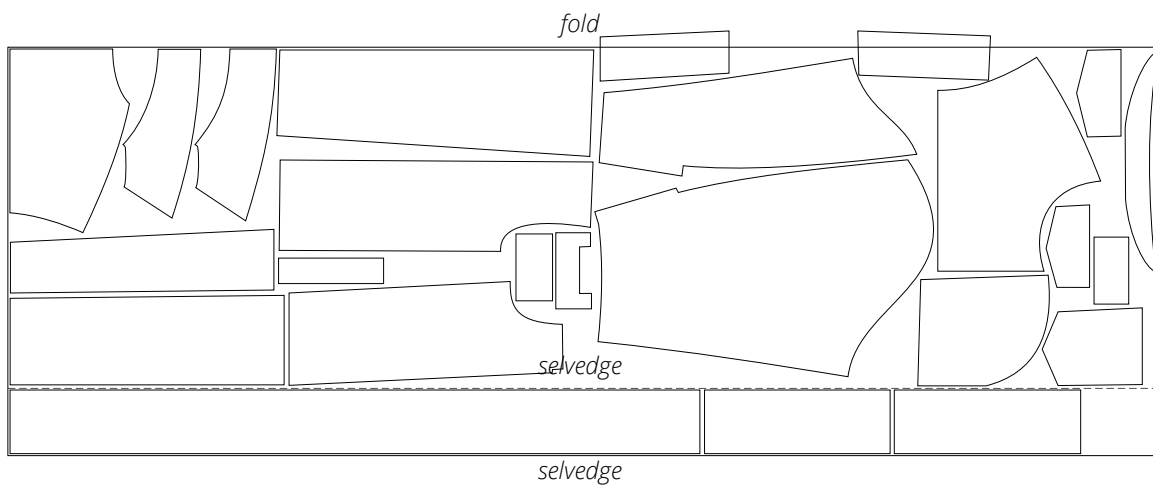
Take this into account when laying out the pattern pieces on the fabric

CUTTING LAYOUT

Main fabric, 140 cm (55") wide, with a directional print/nap, cut on a partial fold, for sizes 38–42 in all heights

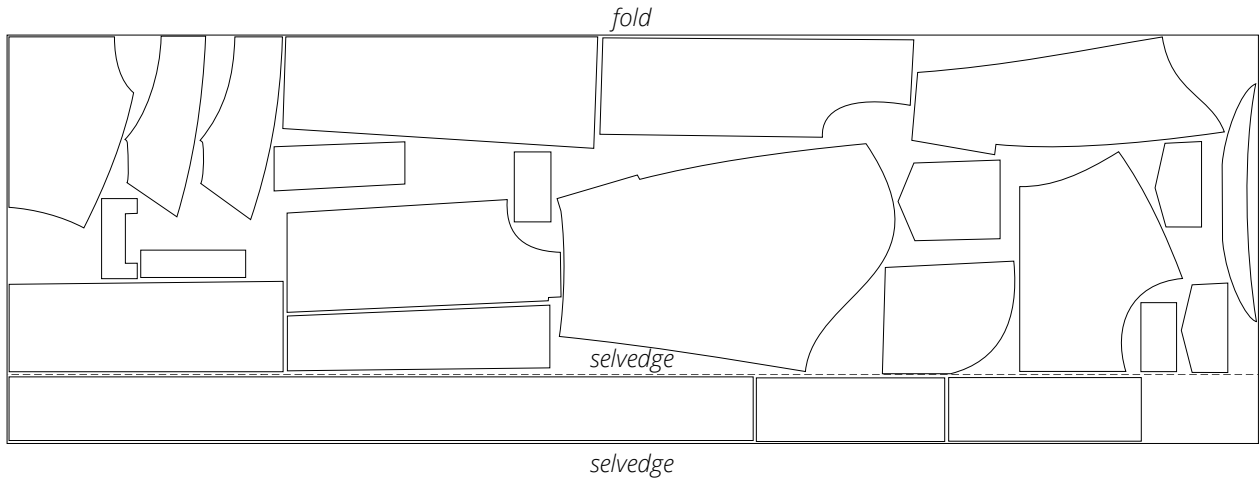


Main fabric, 140 cm (55") wide, with a directional print/nap, cut on a partial fold, for sizes 44–48 in all heights

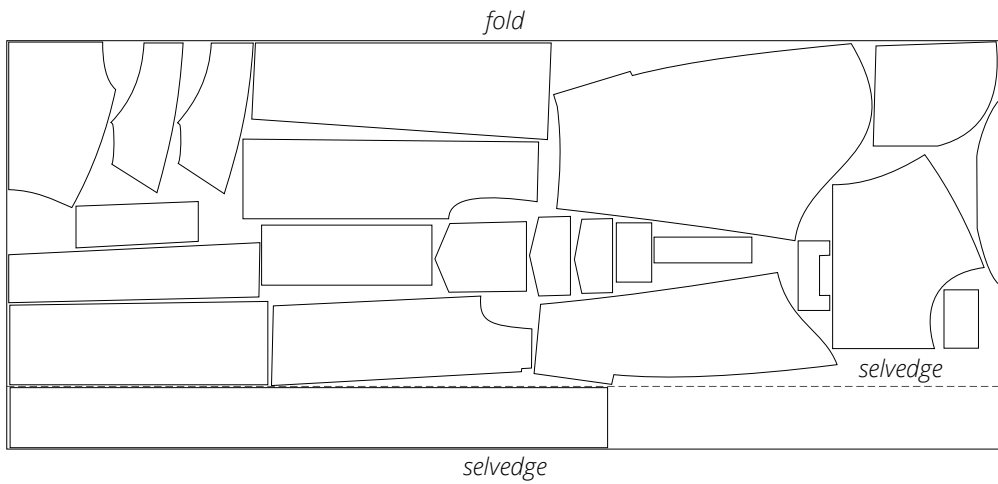


Important! The welt pocket facing pieces are cut on a single layer out of leftover fabric.

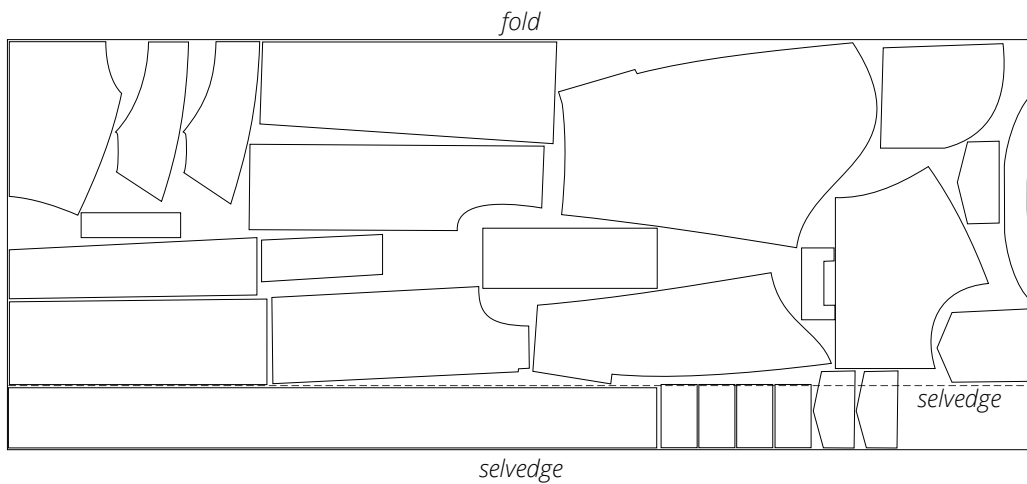
Main fabric, 140 cm (55") wide, with a directional print/nap, cut on a partial fold, for sizes 50-54 in all heights



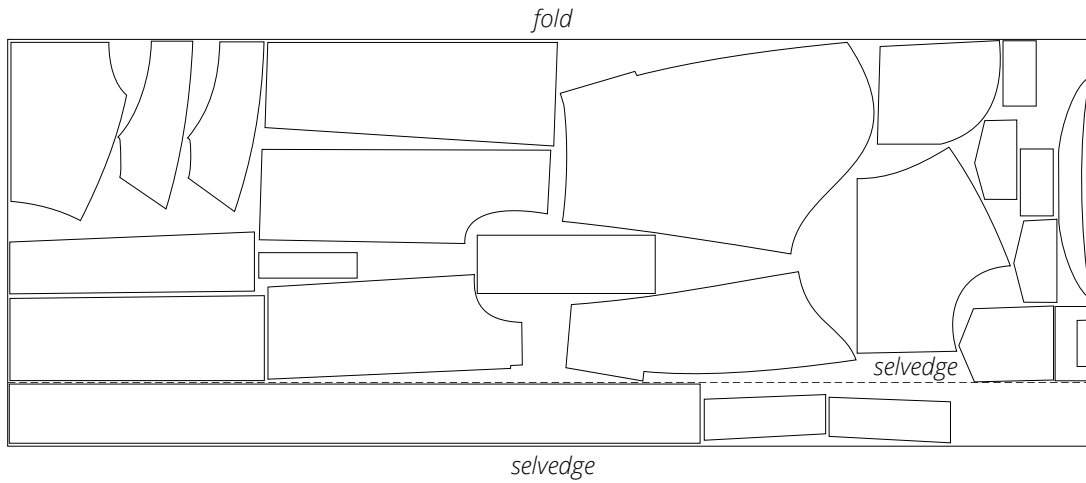
Main fabric, with a directional print/nap, 150 (59") cm wide, cut on a partial fold, for sizes 38-42 in all heights



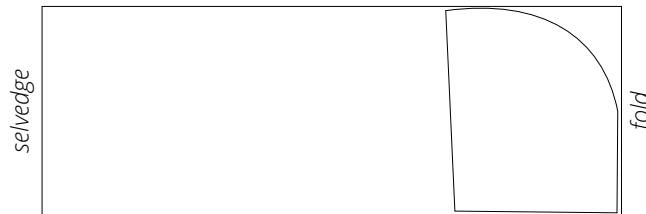
Main fabric, 150 (59") cm wide, with a directional print/nap, cut on a partial fold, for sizes 44-48 in all heights



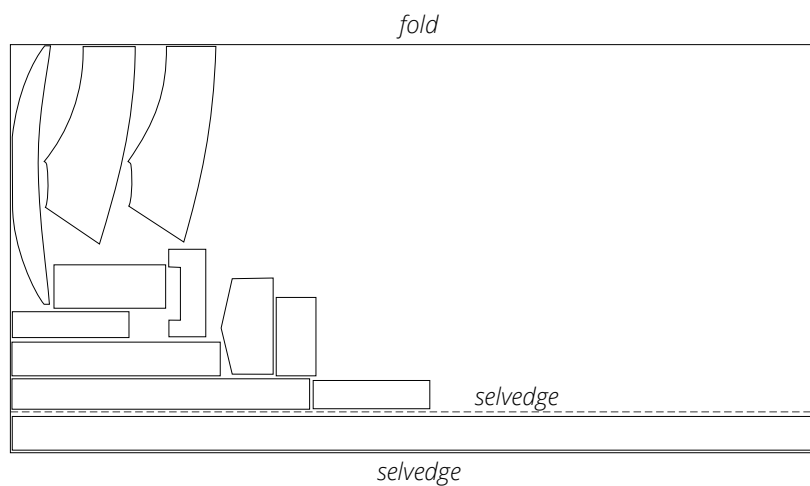
Main fabric, 150 (59") cm wide, with a directional print/nap, cut on a partial fold, for sizes 50-54 in all heights



Additional fabric, 140 cm (55") wide, with a directional print/nap, cut on fold, for all sizes in all heights



Interfacing, 140 cm (55") wide, cut on a partial fold, for all sizes in all heights



READY? LET'S GET SEWING!



Machine-stitch, backstitching at the beginning and end of the seam.
Press the seam flat.



Overlock the seam allowances of the assembled front piece, with the middle front piece facing up.



Press the seams.
Press the seam allowances towards the center front and side front pieces.