

FROM THE FOUNDER OF THE VIKISEWS® BRAND



Back in 2016, when I started making my first sewing patterns and instruction manuals, my main goal was to solve the problems I personally faced at the beginning of my sewing journey: the lack of stylish patterns that provide a great fit and contain clear sewing instructions. That's how Vikisews was born—a brand designed to help you create fashionable, on-trend clothing with your own hands.



The sewing instructions we create is the result of our team's careful, meticulous work. May they help you develop your sewing hobby—or even turn it into your life's work! Enjoy every step of the sewing process and create a thoughtful, stylish wardrobe!

If you have any questions, we're always here to help: info@vikisews.com



KIERNAN PATTERN DESCRIPTION

Kiernan is a close-fitting bustier top with foam cups. The fitting is achieved with princess seams stiffened with rigilene boning. The bustier top closes with a separating zipper in the center back seam.



PLEASE READ BEFORE USE

The contents of this pattern are copyright protected and belong exclusively to Vikisews. You may use Vikisews patterns for personal use. It is prohibited to share Vikisews patterns and instructions with third parties, as well as to publish patterns and instructions online for public access. **Non-compliance with the mentioned rules is a violation of the US copyright law and may result in civil liability and criminal prosecution.**

You may use Vikisews patterns for commercial use, to sew custom-made garments and/or create fashion collections, on the condition that the patterns are solely used in a manufacturing setting and are not further shared with individuals.

TOTAL EASE ALLOWANCE

	Bust ease	Waistline ease
cm	0.9 – 3.8	0.2 – 1.5
inches	3/8 – 1 1/2	1/8 – 5/8

GARMENT LENGTH

Height, cm	Garment length, cm	Height, ft	Garment length, in
1 (154–160)	23.5–23.8	1 (5'1"–5'3")	9 1/4–9 3/8
2 (162–168)	24.4–24.7	2 (5'4"–5'6")	9 5/8–9 3/4
3 (170–176)	25.3–25.6	3 (5'7"–5'9")	10–10 1/8
4 (178–184)	26.2–26.5	4 (5'10"–6'1")	10 3/8

SUGGESTED FABRICS

To sew this bustier top, choose medium-weight, pliable, low-stretch suiting and dress-weight fabrics made of natural, artificial, blended, or synthetic fibers.

The following fabrics are recommended: corset mesh, Chantilly lace, velvet, corduroy, guipure lace, denim, jacquard, lace, and eyelet lace fabric.

Attention! We do not recommend stretchy knit fabrics.

The bustier top in the photo is made of corset mesh and wide Chantilly lace. The fabric is moderately pliable, soft, and low-stretch. The fiber content is 100% synthetic fibers. The lace fabric weight is 60 g/m².

The corset mesh fiber content is 100% synthetic fibers. The fabric weight is 40 g/m².

FABRIC AND NOTIONS REQUIREMENTS

1. Main fabric (fabric 1), 140 cm wide, with a directional print/nap, in meters:

Height, cm	Size				
	34-38	40	42-46	48	50-52
1 (154-160)	0.4	0.4	0.45	0.6	0.6
2 (162-168)	0.4	0.45	0.45	0.65	0.65
3 (170-176)	0.4	0.45	0.45	0.65	0.65
4 (178-184)	0.4	0.45	0.45	0.65	0.7

Main fabric, 55" wide, with a directional print/nap, in yards:

Height, ft	Size			
	34-38	40	40-46	48-52
1 (5'1"-5'3")	3/8	3/8	1/2	5/8
2 (5'4"-5'6")	3/8	1/2	1/2	3/4
3 (5'7"-5'9")	3/8	1/2	1/2	3/4
4 (5'10"-6'1")	3/8	1/2	1/2	3/4

2. Lingerie satin (fabric 2), 140 cm wide, with a directional print, in meters:

Height, cm	Size					
	34-36	38	40-42	44-46	48-50	52
1 (154-160)	0.6	0.65	0.7	0.75	0.8	0.85
2 (162-168)	0.6	0.65	0.7	0.75	0.8	0.85
3 (170-176)	0.6	0.65	0.7	0.75	0.8	0.85
4 (178-184)	0.6	0.65	0.7	0.75	0.8	0.85

Lingerie satin (fabric 2), 55" wide, with a directional print, in yards:

Height, ft	Size		
	34-36	38-42	44-52
1 (5'1"-5'3")	5/8	3/4	7/8
2 (5'4"-5'6")	5/8	3/4	7/8
3 (5'7"-5'9")	5/8	3/4	7/8
4 (5'10"-6'1")	5/8	3/4	7/8

3. Corset mesh, 140 cm wide, cut in one direction, in meters:

Height, cm	Size						
	34-38	40-42	44	46	48	50	52
1 (154-160)	0.75	0.8	0.85	0.9	0.9	0.9	0.95
2 (162-168)	0.75	0.8	0.9	0.9	0.9	0.95	0.95
3 (170-176)	0.8	0.85	0.9	0.9	0.95	0.95	1
4 (178-184)	0.8	0.85	0.95	0.95	0.95	1	1

Corset mesh, 55" wide, cut in one direction, in yards:

Height, ft	Size				
	34-42	44	46-48	50	52
1 (5'1"-5'3")	7/8	7/8	1	1	1
2 (5'4"-5'6")	7/8	1	1	1	1
3 (5'7"-5'9")	7/8	1	1	1	1 1/8
4 (5'10"-6'1")	7/8	1	1	1 1/8	1 1/8

4. Lightweight interfacing, knit or woven, 140 cm wide, for all heights, in meters:

Height, cm	Size						
	34-36	38	40-42	44-46	48-50	50	52
1 (154-160)	0.6	0.65	0.7	0.75	0.9	0.8	0.85
2 (162-168)	0.6	0.65	0.7	0.75	0.9	0.8	0.85
3 (170-176)	0.6	0.65	0.7	0.75	0.95	0.8	0.85
4 (178-184)	0.6	0.65	0.7	0.75	0.95	0.8	0.85

Lightweight interfacing, knit or woven, 140 cm (55") wide, for all heights, in yards:

Height, ft	Size		
	34-36	38-42	44-52
1 (5'1"-5'3")	5/8	3/4	7/8
2 (5'4"-5'6")	5/8	3/4	7/8
3 (5'7"-5'9")	5/8	3/4	7/8
4 (5'10"-6'1")	5/8	3/4	7/8

***IMPORTANT!** When purchasing fabric, please account for shrinkage and buy 5% more than required.*

5. One metal separating zipper, 23.5–26.5 cm (9–11") long, depending on the chosen size.
6. Bra foam, 3 mm (1/8") thick, for all sizes in all heights — a 30×50 cm (12×20") piece.
7. Synthetic whalebone, 6 mm (1/4") wide — 2.65–3.2 m (2 7/8–3 1/2 yd), depending on the chosen size.
8. Channeling tape, 10 mm (3/8") wide — 5–7.2 m (5 1/2–7 7/8 yd), depending on the chosen size.
9. Grosgrain ribbon, 2.5 mm (1") wide — 6–10 m (6 1/2–10 7/8 yd), depending on the chosen size.
10. One pair of type 1 bra underwires in the necessary size.
11. Matching thread — 1 spool for the sewing machine.

TOOLS AND EQUIPMENT

- sewing machine for construction
- one-sided foot for the sewing machine for attaching the zipper.

PATTERN PIECES LIST

1. From fabric 1 (lace):

- center front – cut 1
- mid front — cut 2
- side front — cut 2
- side back — cut 2
- mid back – cut 2
- center back — cut 2
- top cup – cut 2
- side cup — cut 2
- center cup — cut 2

2. From fabric 2 (lingerie satin):

- top cup – cut 2
- side cup — cut 2
- center cup — cut 2
- placket — cut 1
- bottom edge binding — cut 1
- top edge binding — cut 2
- cup seam binding — cut 2
- zipper binding — cut 2

3. From corset mesh:

- center front — cut 2
- mid front — cut 4
- side front — cut 4
- side back — cut 4
- mid back — cut 4
- center back — cut 4
- top cup — cut 2
- side cup — cut 2
- center cup — cut 2
- center front binding — cut 1
- mid front binding — cut 2
- side front binding — cut 2
- side back binding — cut 2
- mid back binding — cut 2
- center back binding — cut 2

4. From foam:

- top cup — cut 2
- side cup — cut 2
- center cup — cut 2

***IMPORTANT!** Don't forget to transfer all pattern markings and notches onto the fabric.*

5. From interfacing:

- placket — cut 1
- bottom edge binding — cut 1
- top edge binding — cut 2
- zipper binding — cut 2

The interfacing strips should be cut on the straight grain (parallel to the selvedge).

***IMPORTANT!** If the pattern pieces have the inscription "face," these pieces should be cut on the right side of the fabric.*

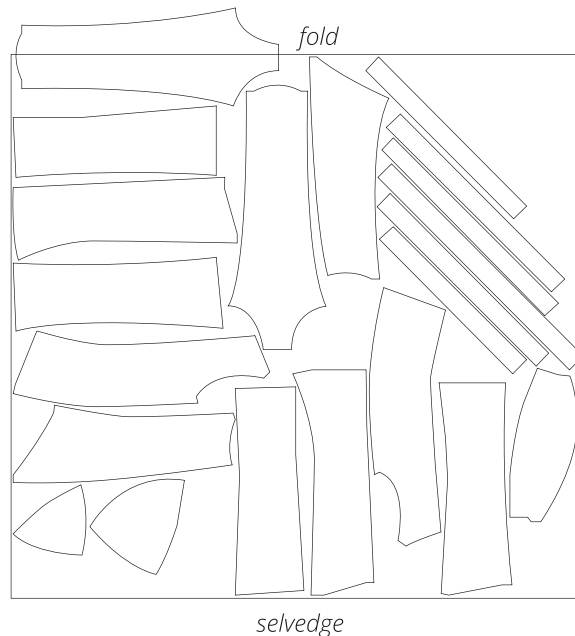
SEAM ALLOWANCES

All pattern pieces include 1 cm (3/8") seam allowances.

Take this into account when laying out the pattern pieces on the fabric.

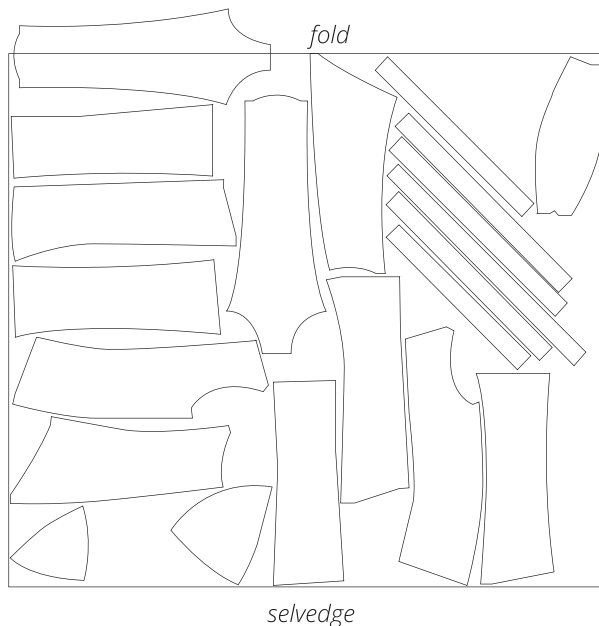
CUTTING LAYOUT

Main fabric (corset mesh), 140 cm (55") wide, cut on fold, for sizes 34–38 in all heights



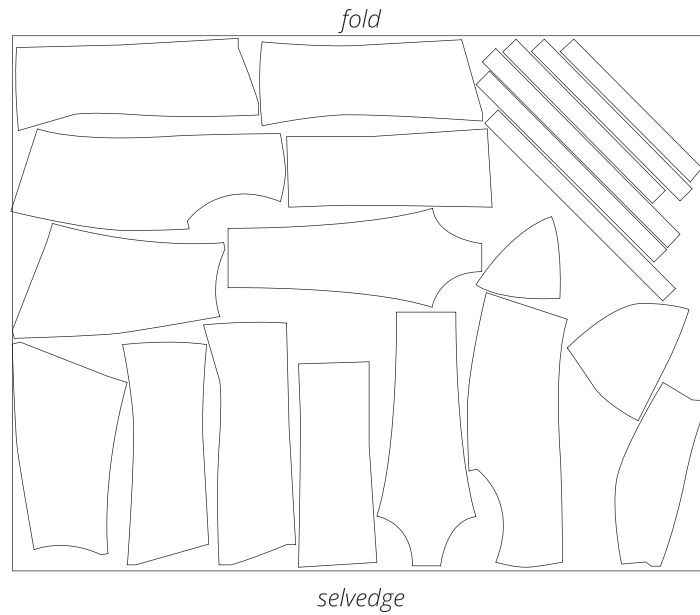
Important! The center front piece is cut on a single layer out of the leftover fabric as a single piece. Cut only one center front binding piece.

Main fabric (corset mesh), 140 cm (55") wide, cut on fold, for sizes 40–42 in all heights



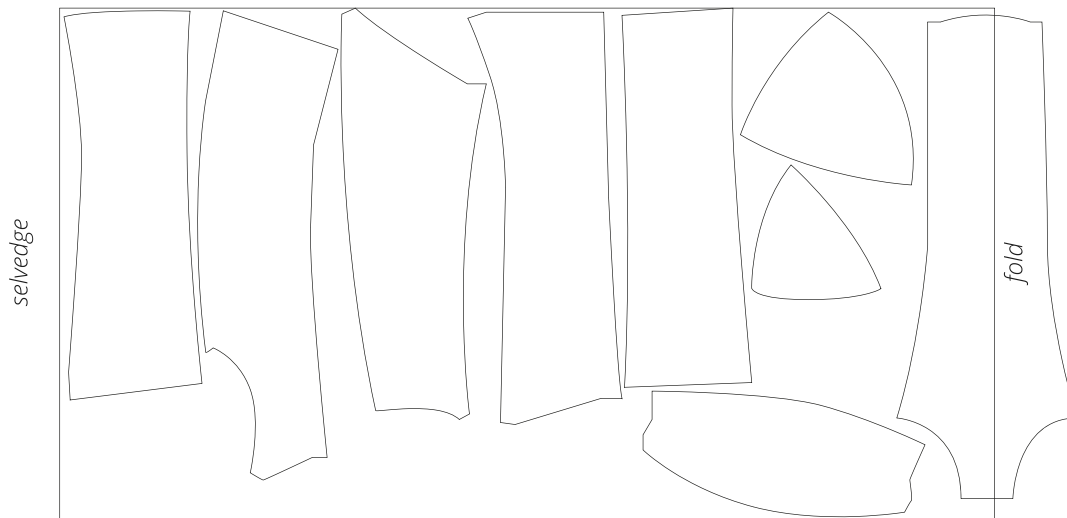
Important! The center front piece is cut on a single layer out of the leftover fabric as a single piece. Cut only one center front binding piece.

Main fabric (corset mesh), 140 cm (55") wide, cut on fold,
for sizes 44-52 in all heights



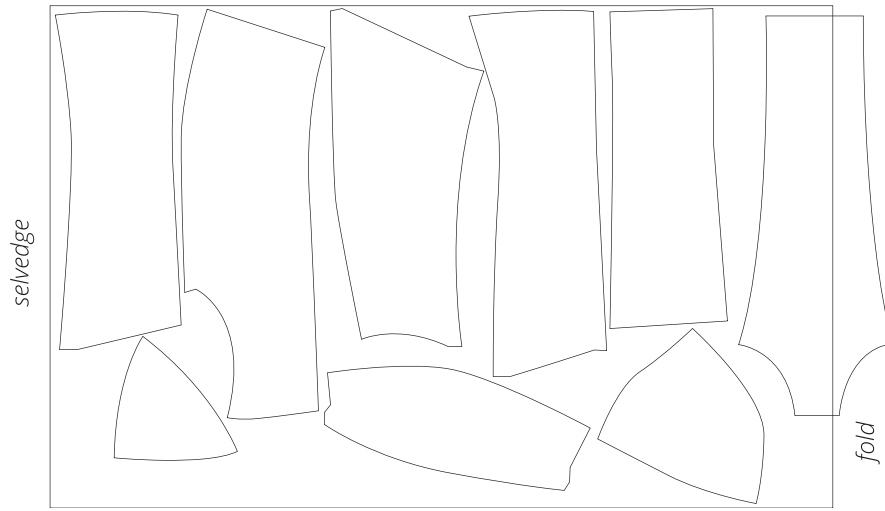
Important! Cut only one center front piece and one center front binding piece.

Main fabric, 140 cm (55") wide, with a directional print/nap, cut on fold,
for sizes 34-38 in all heights



Important! Cut the center front piece on a single layer out of the leftover fabric as a single piece.

Main fabric 1, 140 cm (55") wide, with a directional print/nap, cut on fold,
for sizes 40-46 in all heights



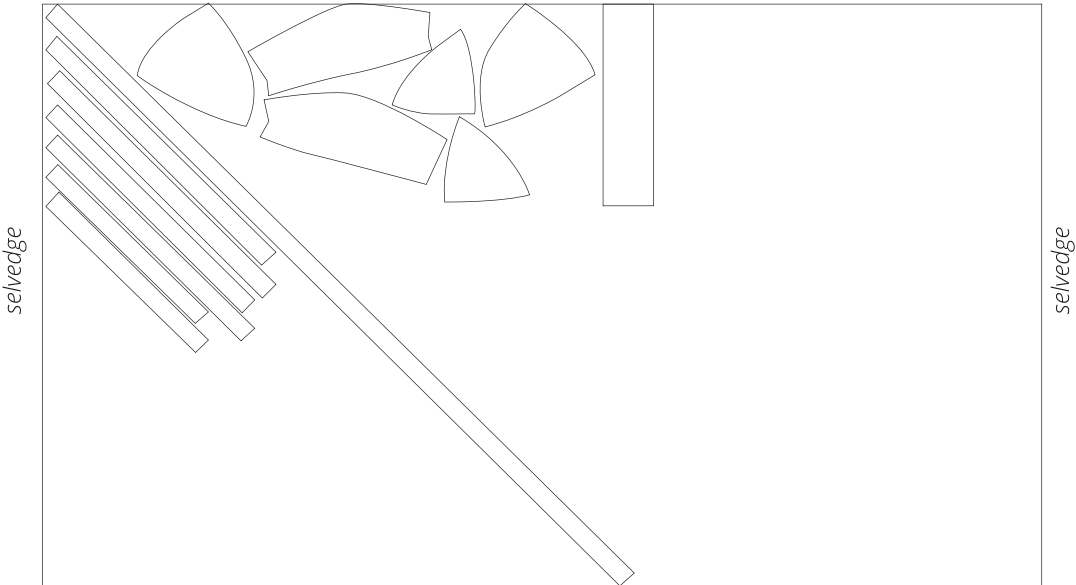
Important! Cut the center front piece on a single layer out of leftover fabric as a single piece.

Main fabric 1, 140 cm (55") wide, with a directional print/nap, cut on fold,
for sizes 48-52 in all heights

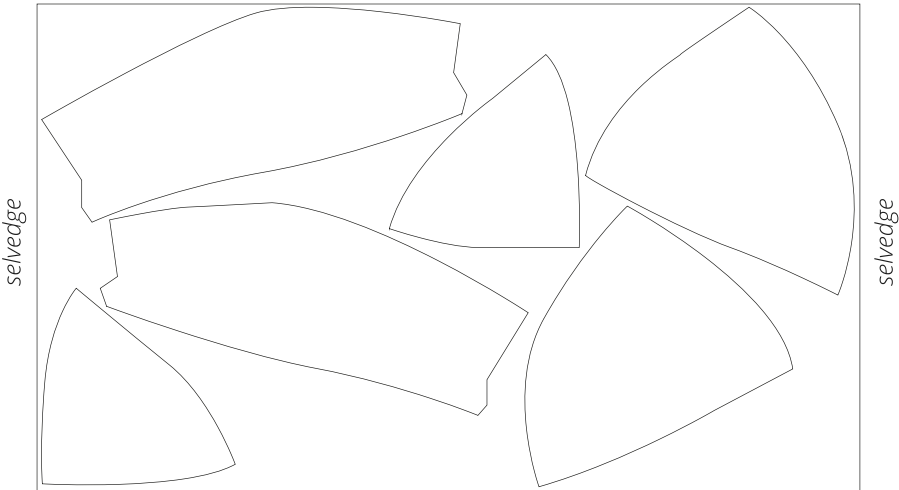


Important! Cut only one center front piece.

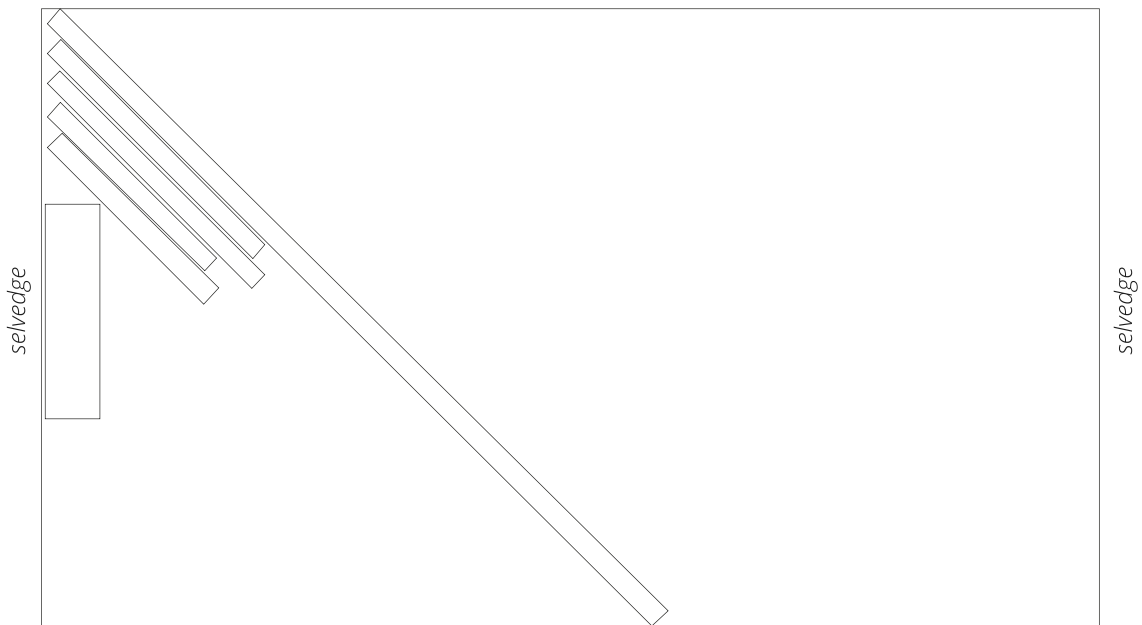
Fabric 2, 140 cm (55") wide, with a directional print/nap, cut on a single layer,
for all sizes in all heights



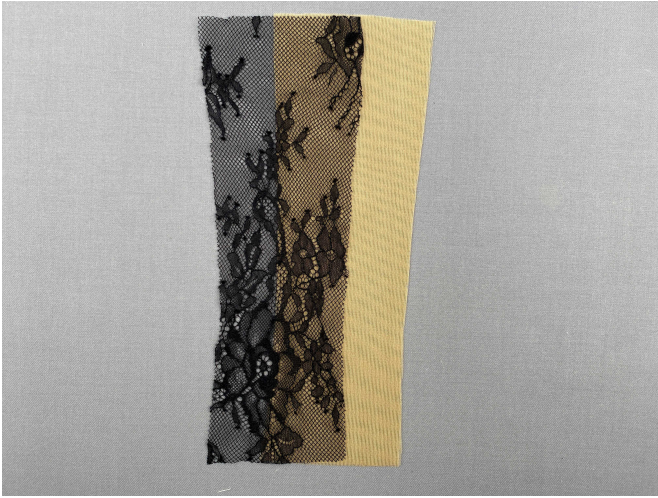
Additional fabric (bra foam), 50x30 cm (20x12"), cut on a single layer,
for all sizes in all heights



Interfacing, 140 cm (55") wide, cut on a single layer,
for all sizes in all heights



READY? LET'S GET SEWING!



1. Place bustier top pieces from the main fabric (fabric 1) wrong sides together onto the corset mesh pieces in order.



2. Align the edges, match the notches, and pin.



3. Machine-stitch at 5 mm (just under 1/4") from the edge. Press the seams flat.



4. Transfer the reference marks from the pattern to the right side of the bustier top pieces.



5. Place the bustier top pieces right sides together in order. Align the edges, match the notches, and pin.

Machine-stitch the pieces in order, backstitching at the beginning and end of the seam.