

FROM THE FOUNDER OF THE VIKISEWS® BRAND

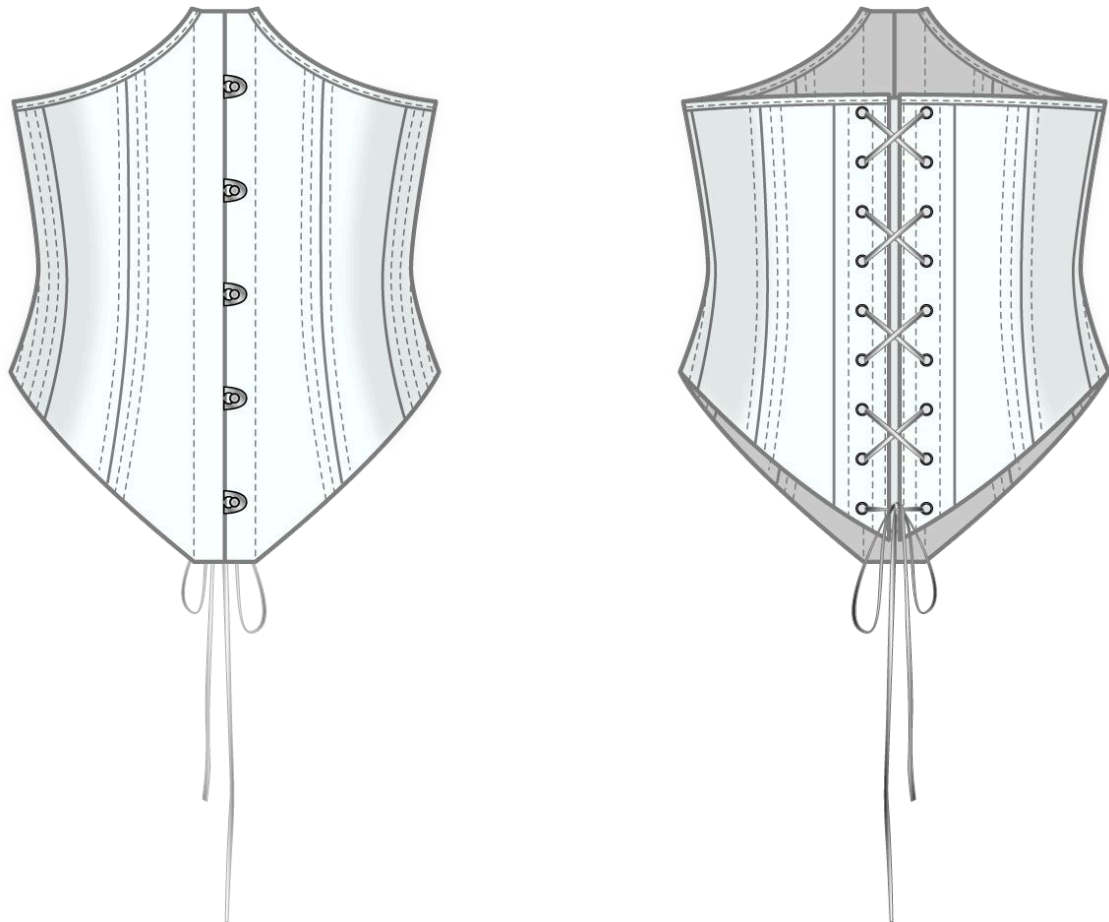


Back in 2016, when I started making my first sewing patterns and instruction manuals, my main goal was to solve the problems I personally faced at the beginning of my sewing journey: the lack of stylish patterns that provide a great fit and contain clear sewing instructions. That's how Vikisews was born—a brand designed to help you create fashionable, on-trend clothing with your own hands.



The sewing instructions we create is the result of our team's careful, meticulous work. May they help you develop your sewing hobby—or even turn it into your life's work! Enjoy every step of the sewing process and create a thoughtful, stylish wardrobe!

If you have any questions, we're always here to help: info@vikisews.com



ZANIA PATTERN DESCRIPTION

Zania is a close-fitting, lined bustier top. The fitting is achieved with princess seams stiffened with rigilene boning. The center front seam has a busk closure. The center back seam features a lacing placket with grommets for lacing. The hem is shaped.



PLEASE READ BEFORE USE

The contents of this pattern are copyright protected and belong exclusively to Vikisews. You may use Vikisews patterns for personal use. It is prohibited to share Vikisews patterns and instructions with third parties, as well as to publish patterns and instructions online for public access. **Non-compliance with the mentioned rules is a violation of the US copyright law and may result in civil liability and criminal prosecution.**

You may use Vikisews patterns for commercial use, to sew custom-made garments and/or create fashion collections, on the condition that the patterns are solely used in a manufacturing setting and are not further shared with individuals.

TOTAL EASE ALLOWANCE

Waistline ease (estimated)

cm -1.4 to -2.8

inches -1/2 to -1 1/8

GARMENT LENGTH

Height, cm	Center back length, cm	Height, ft	Center back length, in
1 (154–160)	22.1–21.6	1 (5'1"–5'3")	8 3/4–8 1/2
2 (162–168)	22–21.5	2 (5'4"–5'6")	8 5/8–8 1/2
3 (170–176)	23.9–23.4	3 (5'7"–5'9")	9 3/8–9 1/4
4 (178–184)	23.8–23.4	4 (5'10"–6'1")	9 3/8–9 1/4

SUGGESTED FABRICS

To sew this bustier top, choose medium-weight, non-stretch, and opaque suiting and dress-weight fabrics made of natural, artificial, blended, or synthetic fibers.

The following fabrics are recommended: satin, velvet, tapestry, denim, jacquard, suiting fabric, taffeta, cotton.

Attention! We do not recommend stretchy knit fabrics or lightweight sheer fabrics (chiffon, organza, stretch lace).

The top in the photo is made of matte satin (Peau de Soie). The fabric is medium-weight, pliable, and non-stretch. The fiber content is 100% polyester. The fabric weight is 180 g/m².

The lining is made of the main fabric.

FABRIC AND NOTIONS REQUIREMENTS

1. Main fabric, 140 cm wide, with a directional print/nap, in meters

Height, cm	Size		
	34-36	38-48	50-52
1 (154-160)	0.6	0.65	0.7
2 (162-168)	0.6	0.65	0.7
3 (170-176)	0.65	0.7	0.75
4 (178-184)	0.65	0.7	0.75

Main fabric, 55" wide, with a directional print/nap, in yards:

Height, ft	Size		
	34-36	38-48	50-52
1 (5'1"-5'3")	5/8	3/4	3/4
2 (5'4"-5'6")	5/8	3/4	3/4
3 (5'7"-5'9")	3/4	3/4	7/8
4 (5'10"-6'1")	3/4	3/4	7/8

2. Lightweight interfacing, knit or woven,
140 cm wide, in meters:

Height, cm	Size	
	34-46	48-52
1 (154-160)	0.35	0.35
2 (162-168)	0.35	0.35
3 (170-176)	0.35	0.4
4 (178-184)	0.35	0.4

Lightweight interfacing, knit or woven,
55" wide, in yards:

Height, ft	Size
	34-52
1 (5'1"-5'3")	3/8
2 (5'4"-5'6")	3/8
3 (5'7"-5'9")	3/8
4 (5'10"-6'1")	3/8

3. Stitched bias-cut fusible stay tape with stitch reinforcement, 1.5 cm (5/8") wide — 7.6-11.1 m (8 1/4-12 1/8 yd).

4. Busk closure, length for all sizes, in meters:

Height, cm	Length
1 (154–160)	0.28
2 (162–168)	0.28
3 (170–176)	0.30
4 (178–184)	0.30

Busk closure, length for all sizes, in yards:

Height, cm	Length
1 (5'1"–5'3")	1/4
2 (5'4"–5'6")	1/4
3 (5'7"–5'9")	1/4
4 (5'10"–6'1")	1/4

5. Eighteen (+2 spare) grommets, 5 mm (just under 1/4") in diameter.

6. Cord or satin ribbon — 2.27–2.47 m (2 1/2–2 3/4 yd).

7. Synthetic whalebone, 8 mm (just under 3/8") wide — 4.17–5.27 m (4 1/2–5 3/4 yd), depending on the size.

TOOLS AND EQUIPMENT

- sewing machine for construction
- one-sided foot for the sewing machine
- hole puncher or awl
- press tool and set of molds for installing grommets

PATTERN PIECES LIST

1. From main fabric:

- lacing placket — cut 2
- center back — cut 4
- mid back — cut 4
- side — cut 4
- mid front — cut 4
- right center front — cut 1
- right center front facing — cut 1
- left center front — cut 1
- center front lining — cut 2
- top edge binding — cut 2

IMPORTANT! Don't forget to transfer all pattern markings and notches onto the fabric.

2. From interfacing:

- facing placket — cut 2
- center back — cut 4
- mid back — cut 4
- side — cut 4
- mid front — cut 4
- right center front — cut 1
- right center front facing — cut 1
- left center front — cut 1

The interfacing strips should be cut on the straight grain (parallel to the selvedge).

***IMPORTANT!** The pattern pieces that have the "face" inscription on them should be placed with the blank side onto the right side of fabric when cutting.*

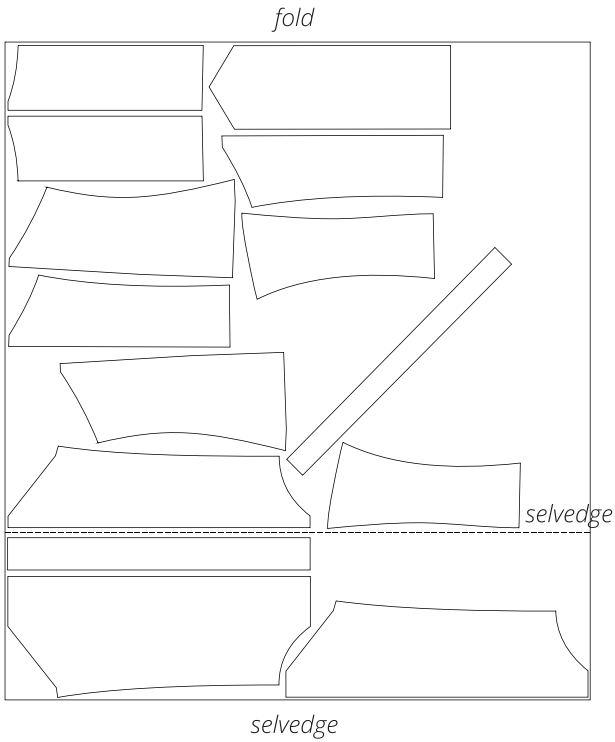
SEAM ALLOWANCES

All pattern pieces include 1 cm (3/8") seam allowances.

Take this into account when laying out the pattern pieces on the fabric.

CUTTING LAYOUT

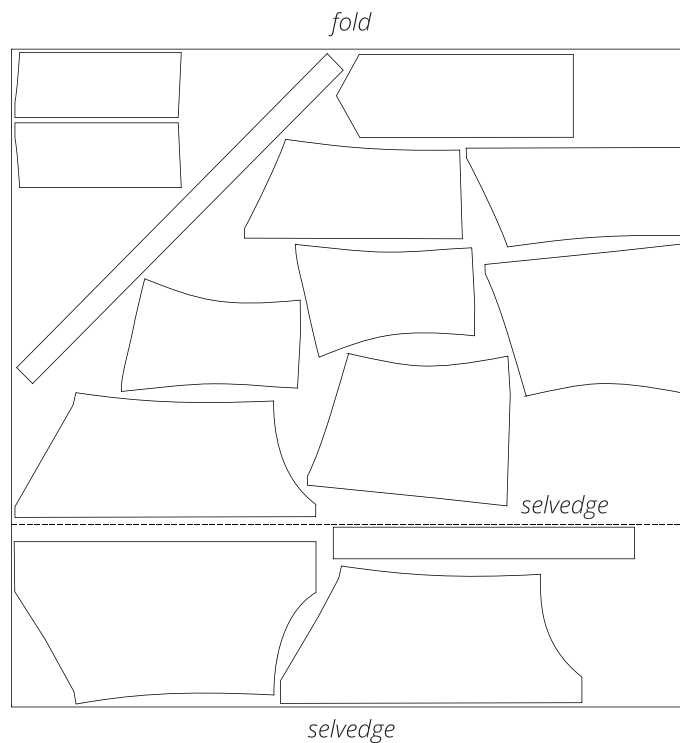
Main fabric, 140 cm (55") wide, with a directional print/nap, cut on a partial fold, for sizes 34–36 in all heights



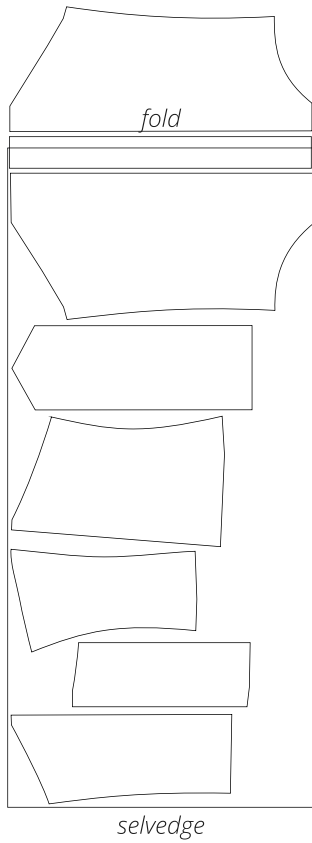
Main fabric, 140 cm (55") wide, with a directional print/nap, cut on a partial fold, for sizes 38–44 in all heights



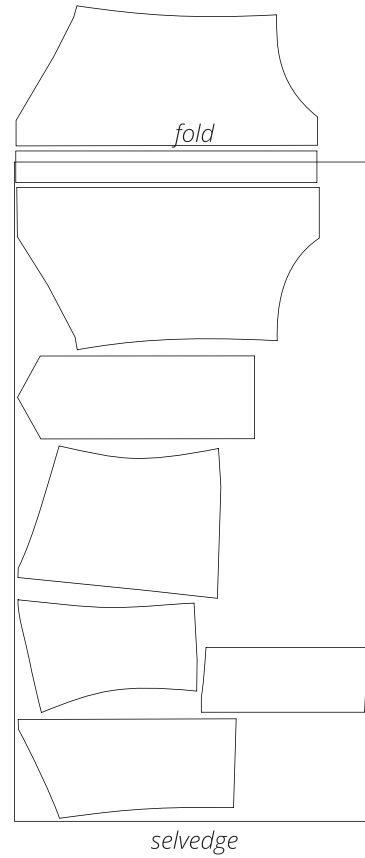
Main fabric, 140 cm (55") wide, with a directional print/nap, cut on a partial fold, for sizes 46–52 in all heights



Interfacing, 140 cm (55") wide, cut on fold,
for sizes 34–46 in all



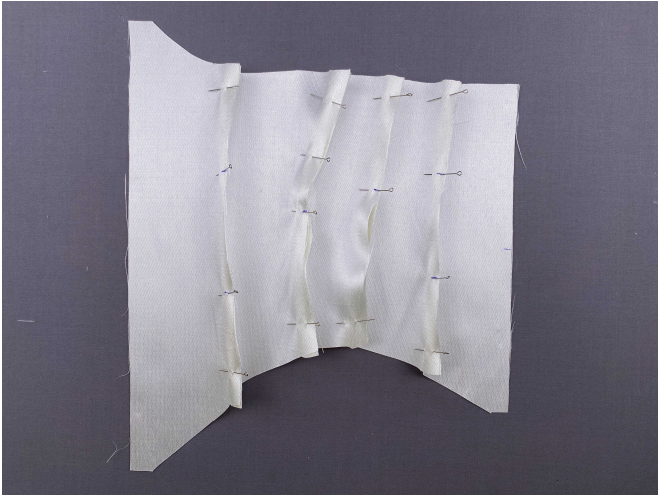
Interfacing, 140 cm (55") wide, cut on fold,
for sizes 48–52 in all heights



Attention! Cut one each of the right center front,
left center front, and right center front facing
pieces.

Attention! Cut one each of the right center front,
left center front, and right center front facing
pieces.

READY? LET'S GET SEWING!



9. Place the lining pieces right sides together in order. Align the edges and match the notches, then pin. Machine-stitch the pieces in order, backstitching at the beginning and end of each seam.



10. Press the seams flat.



11. Clip into the seam allowances at the curved sections, stopping 2 mm short of the seam.



12. Press the seam allowances open.