

# FROM THE FOUNDER OF THE #VIKISEWS BRAND

---

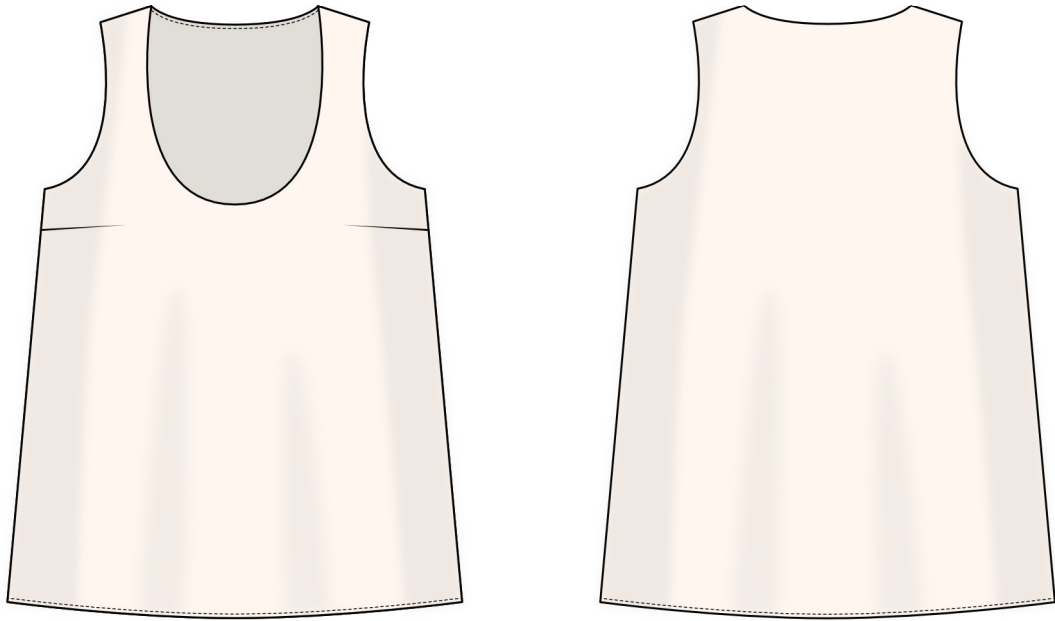


Back in 2016, when I was working on my first set of sewing instructions, I was trying to write them in such a way that even a complete beginner could easily understand and use them to create their very first garment. These instructions laid the foundation for the Vikisews brand, its vision and its mission. I wanted to create modern patterns with the utmost detailed and clear instructions.

Now, with each new collection we are constantly improving our instructions, amending them and adding more relevant details. By the time the final product reaches you, our drafters, correctors, and editors would have spent weeks perfecting every word and every photograph. If you compile a few of our instructions together, you will get a sewing manual that will assist you in sewing all kinds of garments at any difficulty level.

And I would be very happy if these instructions helped you to turn your hobby into a lifelong passion... Enjoy the process! Create your ultimate dream wardrobe! Wear your garments proudly for years to come!

If you have any questions, please contact us at [info@vikisews.com](mailto:info@vikisews.com) — we are always there to help.



## JANINE PATTERN DESCRIPTION

---

Janine is a semi-fitted top with a straight silhouette. The front is shaped with bust darts. The top features a low round neckline and is finished with a facing. Janine is hip length.



## IMPORTANT!

---

The contents of this pattern are copyright protected and belong exclusively to Vikisews. You may use Vikisews patterns for personal use. It is prohibited to share Vikisews patterns and instructions with third parties, as well as to publish patterns and instructions online for public access. **Non-compliance with the mentioned rules is a violation of the US copyright law and may result in civil liability and criminal prosecution.**

You may use Vikisews patterns for commercial use, to sew custom-made garments and/or create fashion collections, on the condition that the patterns are solely used in a manufacturing setting and are not further shared with individuals.

## TOTAL EASE ALLOWANCE

---

	Bust ease	Waistline ease	Hipline ease
cm	9	32	9
inches	3 ½	12 ⅝	3 ½

## GARMENT LENGTH

---

Height, cm	Center back length, cm	Height, ft	Center back length, in
1 (154–160)	59.7–62.1	1 (5'1"–5'3")	23 1/2–24 1/2
2 (162–168)	62.7–65.1	2 (5'4"–5'6")	24 5/8–25 5/8
3 (170–176)	65.7–68.1	3 (5'7"–5'9")	25 7/8–26 3/4
4 (178–184)	68.7–71.1	4 (5'10"–6'1")	27–28

## SUGGESTED FABRIC

---

To sew this top, choose medium weight, soft, non-stretch dress-weight fabrics made of natural, artificial, blended, or synthetic fibers.

The following fabrics are recommended: silk, chiffon, batiste, silk batiste, viscose, acetate, and polyester.

**Attention!** We do not recommend stretchy knit fabrics or lightweight sheer fabrics (organza, stretch lace).

The top in the photo is made of natural silk. The fabric is medium weight, soft, and low-stretch. The fiber content is 100% silk. The fabric weight is 110 g/m<sup>2</sup>.

# FABRIC AND NOTIONS REQUIREMENTS

1. Main fabric, 140 cm wide, with a directional print/nap, in meters:

Height, cm	Size				
	34-38	40	42-44	46-48	50-52
1 (154-160)	1.1	1.1	1.15	1.2	1.2
2 (162-168)	1.15	1.15	1.2	1.2	1.25
3 (170-176)	1.15	1.2	1.2	1.25	1.3
4 (178-184)	1.2	1.2	1.25	1.3	1.3

Main fabric, 55" wide, with a directional print/nap, in yards:

Height, ft	Size			
	34-40	42-44	46-48	50-52
1 (5'1"-5'3")	1 ¼	1 ¼	1 ¼	1 ¼
2 (5'4"-5'6")	1 ¼	1 ¼	1 ¼	1 ¾
3 (5'7"-5'9")	1 ¼	1 ¼	1 ¾	1 ¾
4 (5'10"-6'1")	1 ¼	1 ¾	1 ¾	1 ¾

***IMPORTANT!** When purchasing fabric, please account for shrinkage and buy 5% more than required.*

2. Matching thread — 4 spools (1 spool for the sewing machine + 3 spools for the overlocker)

## TOOLS AND EQUIPMENT

- sewing machine for construction
- overlocker for finishing raw edges. This may be replaced with a stretch overlock stitch or a zigzag
- stitch on the sewing machine (overlock or zigzag stitch width 2-3 mm, stitch length 2.5 mm)

# PATTERN PIECES LIST

---

From main fabric:

- front – cut 1 on fold
- back – cut 1 on fold
- front facing – cut 1 on fold
- back facing – cut 1 on fold

***IMPORTANT!** Don't forget to transfer all pattern markings and notches onto the fabric.*

# SEAM ALLOWANCES

---

All pattern pieces include seam allowances as follows:

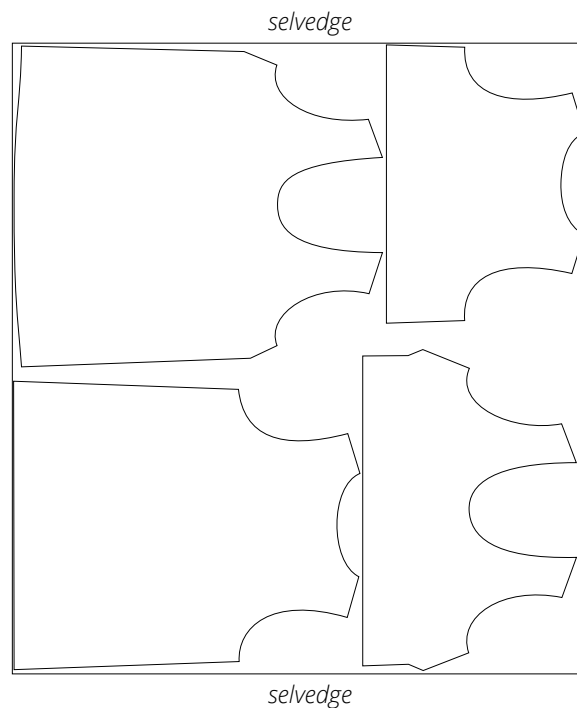
- garment hem allowance — no allowance on the facing hem
- all other edges — 1 cm (3/8")

Take this into account when laying out the pattern pieces on the fabric.

# CUTTING LAYOUT

---

Main fabric, 140 cm (55") wide, with a directional print/nap, cut on a single layer, for all sizes in all heights.



**READY? LET'S GET SEWING!**

---



On the front facing, press the dart allowance downward.



Place the front and back pieces wrong sides together. Align the shoulder edges and pin. Machine-stitch 5 mm (just under 1/4") from the edge, backstitching at the beginning and end of the seam.

Press the seam.



Place the front facing and back facing wrong sides together. Align the shoulder edges, and pin.

Machine-stitch 5 mm (just under 1/4") from the edge, backstitching at the beginning and end of the seam.

Press the seam.