

FROM THE FOUNDER OF THE VIKISEWS® BRAND

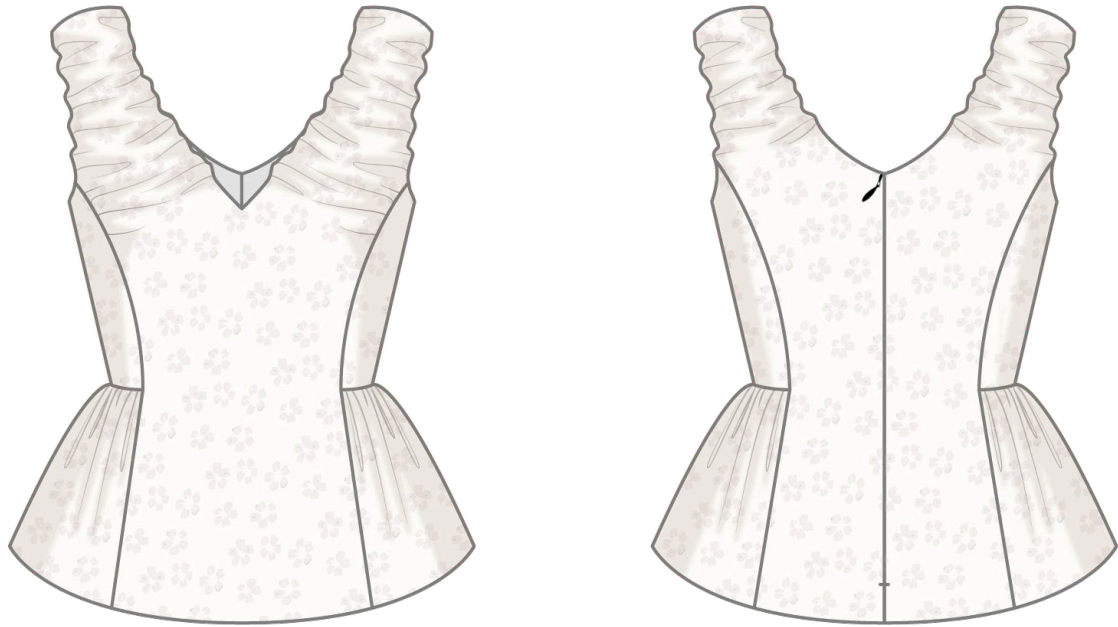


Back in 2016, when I started making my first sewing patterns and instruction manuals, my main goal was to solve the problems I personally faced at the beginning of my sewing journey: the lack of stylish patterns that provide a great fit and contain clear sewing instructions. That's how Vikisews was born—a brand designed to help you create fashionable, on-trend clothing with your own hands.



The sewing instructions we create is the result of our team's careful, meticulous work. May they help you develop your sewing hobby—or even turn it into your life's work! Enjoy every step of the sewing process and create a thoughtful, stylish wardrobe!

If you have any questions, we're always here to help: info@vikisews.com



FAINA PATTERN DESCRIPTION

Faina is a close-fitting top with an accentuated waist. The front and back are fitted with princess seams. The deep neckline is V-shaped at the front and oval at the back. The front and back neckline, as well as the front princess seams and front armholes at the top feature gathering. The side pieces feature waist seams. The bottom side pieces are gathered along the waist seam. The top has a lining made of the main fabric and closes with an invisible zipper in the center back seam. Faina is hip-length.



PLEASE READ BEFORE USE

The contents of this pattern are copyright protected and belong exclusively to Vikisews. You may use Vikisews patterns for personal use. It is prohibited to share Vikisews patterns and instructions with third parties, as well as to publish patterns and instructions online for public access. **Non-compliance with the mentioned rules is a violation of the US copyright law and may result in civil liability and criminal prosecution.**

You may use Vikisews patterns for commercial use, to sew custom-made garments and/or create fashion collections, on the condition that the patterns are solely used in a manufacturing setting and are not further shared with individuals.

TOTAL EASE ALLOWANCE

	Bust ease	Waistline ease	Hipline ease (estimated)
cm	1.3–3.7	2.5–2.1	22.3–31.7
inches	1/2–1 1/2	1–7/8	8 3/4–12 1/2

GARMENT LENGTH

Height, cm	Back length from waist down, cm	Height, ft	Back length from waist down, in
1 (154–160)	18	1 (5'1"–5'3")	7 1/8
2 (162–168)	20	2 (5'4"–5'6")	7 7/8
3 (170–176)	22	3 (5'7"–5'9")	8 5/8
4 (178–184)	24	4 (5'10"–6'1")	9 1/2

SUGGESTED FABRICS

To sew this top, choose medium-weight, pliable, structured, non-stretch or low-stretch, opaque shirting fabrics made of natural, artificial, blended, or synthetic fibers.

The following fabrics are recommended: cotton, batiste, poplin, shirting fabrics, and taffeta.

Attention! We do not recommend stretchy knit fabrics, as well as lightweight and sheer materials (chiffon, organza, stretch lace). Fabrics with a directional nap or print are also not recommended.

The top in the photo is made of taffeta. The fabric is medium-weight, pliable, soft, and structured. The fiber content is 100% polyester. The fabric weight is 140 g/m².

The lining is made from the main fabric.

FABRIC AND NOTIONS REQUIREMENTS

1. Main fabric, 140 cm wide, with a directional print/nap, in meters:

Height, cm	Size							
	34	36	38-40	42	44	46-48	50	52
1 (154-160)	1.2	1.2	1.25	1.3	1.3	1.35	1.45	1.5
2 (162-168)	1.25	1.3	1.3	1.35	1.35	1.45	1.5	1.55
3 (170-176)	1.3	1.35	1.35	1.4	1.45	1.55	1.55	1.6
4 (178-184)	1.35	1.4	1.4	1.5	1.5	1.6	1.65	1.7

Main fabric, 55" wide, with a directional print/nap, in yards:

Height, ft	Size							
	34	36	38-40	42	44	46-48	50	52
1 (5'1"-5'3")	1 1/4	1 1/4	1 3/8	1 3/8	1 3/8	1 1/2	1 5/8	1 5/8
2 (5'4"-5'6")	1 3/8	1 3/8	1 3/8	1 1/2	1 1/2	1 5/8	1 5/8	1 3/4
3 (5'7"-5'9")	1 3/8	1 1/2	1 1/2	1 1/2	1 5/8	1 3/4	1 3/4	1 3/4
4 (5'10"-6'1")	1 1/2	1 1/2	1 1/2	1 5/8	1 5/8	1 3/4	1 3/4	1 7/8

IMPORTANT! When purchasing fabric, please account for shrinkage and buy 5% more than required.

2. Stitched bias-cut fusible stay tape with stitch reinforcement, 1.5 cm (5/8") wide — 0.7-0.9 m (3/4-1 yd)

3. One invisible zipper, 35-45 cm (14-18") long

4. One S1 hook-and-eye closure

5. Matching thread — 1 spool for the sewing machine

TOOLS AND EQUIPMENT

- sewing machine for construction
- stitch-in-the-ditch foot for the sewing machine (optional)
- invisible zipper foot for the sewing machine
- one-sided foot for the sewing machine

PATTERN PIECES LIST

1. From main fabric:

- center front — cut 1 on fold
- center back — cut 2
- top side front — cut 4
- top side back — cut 4
- bottom side — cut 4
- center front lining — cut 1 on fold
- center back lining — cut 2

***IMPORTANT!** Don't forget to transfer all pattern markings and notches onto the fabric.*

Additionally, cut the following from interfacing

- one 2 × 2 cm (3/4 × 3/4") square piece to interface the corner area of the V-shaped neckline on the center front piece.

SEAM ALLOWANCES

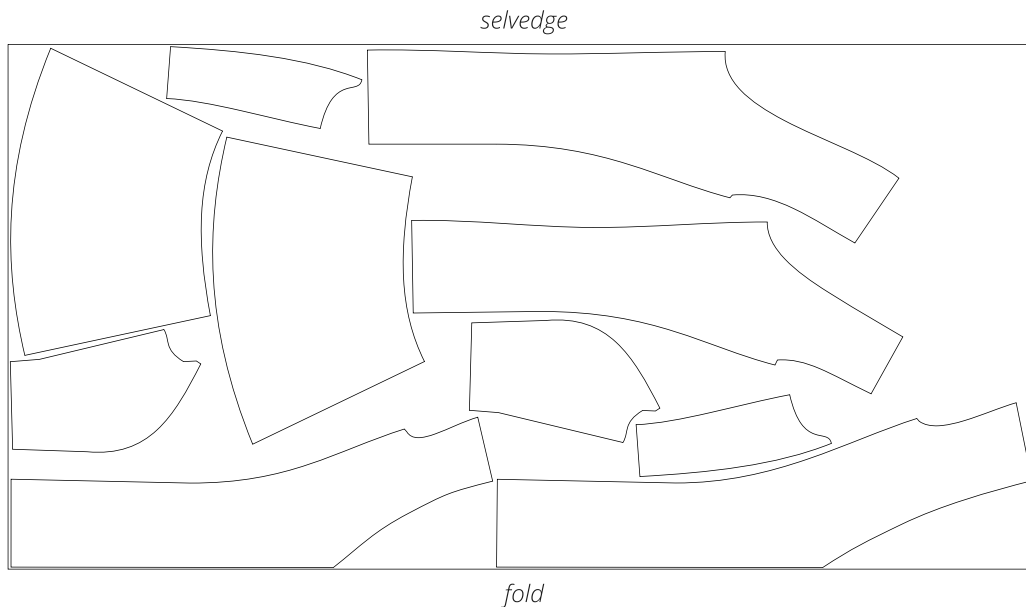
All pattern pieces include seam allowances as follows:

- center seam allowance on the center back pieces — 1.5 cm (5/8")
- all other edges — 1 cm (3/8")

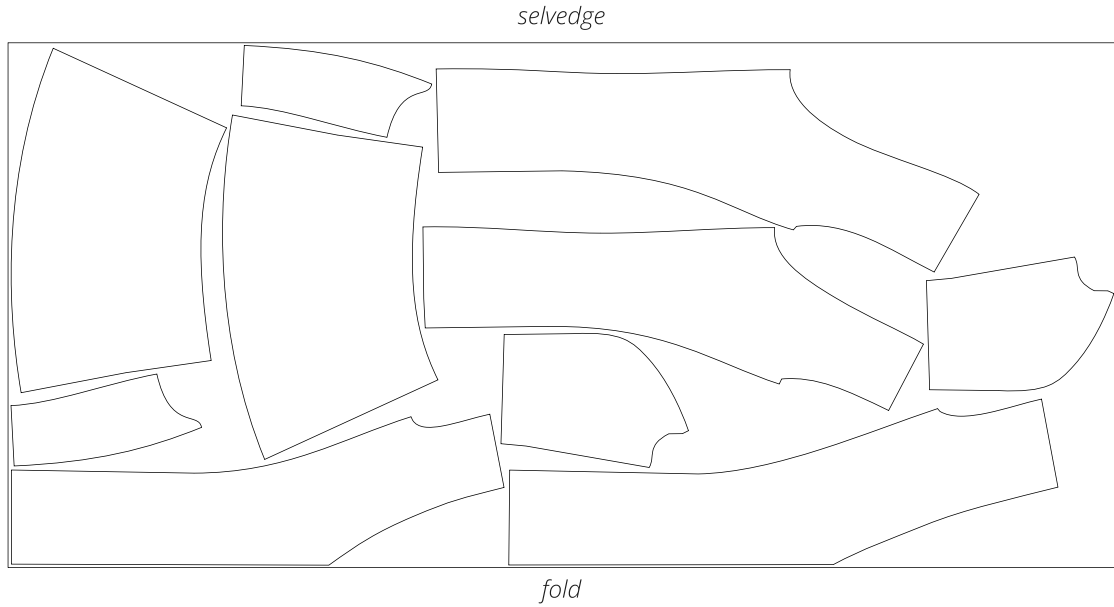
Take this into account when laying out the pattern pieces on the fabric.

CUTTING LAYOUT

Main fabric, 140 cm (55") wide, with a directional print/nap, cut on fold,
for sizes 34–38 in all heights



Main fabric, 140 cm (55") wide, with a directional print/nap, cut on fold,
for sizes 40–44 in all heights



Main fabric, 140 cm (55") wide, with a directional print/nap, cut on fold,
for sizes 46–52 in all heights



READY? LET'S GET SEWING!



6. Sew two parallel rows of gathering stitches along the top edge on the bottom side piece, at 5 mm (just under 1/4") and 1.2 cm (1/2") from the edge. Use the longest stitch length. Leave long thread tails. Important! Do not backstitch.



7. Pull the bobbin threads to gather the edge. Distribute the gathers evenly. Gather to the length indicated on the pattern.



8. Place the assembled top side piece right sides together with the bottom side piece. Align the waist edges, match the notches, and pin.