

FROM THE FOUNDER OF THE VIKISEWS® BRAND



Back in 2016, when I started making my first sewing patterns and instruction manuals, my main goal was to solve the problems I personally faced at the beginning of my sewing journey: the lack of stylish patterns that provide a great fit and contain clear sewing instructions. That's how Vikisews was born—a brand designed to help you create fashionable, on-trend clothing with your own hands.



The sewing instructions we create is the result of our team's careful, meticulous work. May they help you develop your sewing hobby—or even turn it into your life's work! Enjoy every step of the sewing process and create a thoughtful, stylish wardrobe!

If you have any questions, we're always here to help: info@vikisews.com



FLAMINIA PATTERN DESCRIPTION

Flaminia is a semi-fitted dress with an accentuated waist and a boat neck. The waist seam is gathered with elastic. The left shoulder seam features two pleats transitioning into complex draping with a knot at the waist. The draping is decorated with a metal buckle. The skirt of the dress has shaped design lines at the front and waist darts at the back. The set-in sleeves are long. Flaminia is above-ankle length.



PLEASE READ BEFORE USE

The contents of this pattern are copyright protected and belong exclusively to Vikisews. You may use Vikisews patterns for personal use. It is prohibited to share Vikisews patterns and instructions with third parties, as well as to publish patterns and instructions online for public access. **Non-compliance with the mentioned rules is a violation of the US copyright law and may result in civil liability and criminal prosecution.**

You may use Vikisews patterns for commercial use, to sew custom-made garments and/or create fashion collections, on the condition that the patterns are solely used in a manufacturing setting and are not further shared with individuals.

TOTAL EASE ALLOWANCE

	Bust ease	Waistline ease	Hipline ease	Upper arm ease
cm	17.5–19.5	-0.6 to -1.3	9.4–13.5	5.2–0.3
inches	6 7/8–7 5/8	-1/4 to -1/2	3 3/4–5 3/8	2–1/8

GARMENT LENGTH, SLEEVE LENGTH

Height, cm	Back length from waist down, cm	Sleeve length, cm
1 (154–160)	87.2	54.4–56.1
2 (162–168)	90.2–90.4	56.3–58
3 (170–176)	93.3–93.4	58.2–59.9
4 (178–184)	96.3–96.4	60.1–61.8

Height, ft	Back length from waist down, in	Sleeve length, in
1 (5'1"–5'3")	34 3/8	21 3/8–22 1/8
2 (5'4"–5'6")	35 1/2–35 5/8	22 1/8–22 7/8
3 (5'7"–5'9")	36 3/4–36 3/4	22 7/8–23 5/8
4 (5'10"–6'1")	37 7/8–38	23 5/8–24 3/8

SUGGESTED FABRICS

To sew this dress, choose soft, stretchy, pliable medium-weight knit fabrics made of natural, artificial, blended, or synthetic fibers.

The following fabrics are recommended: double jersey, single jersey, and knit fabrics with a stretch factor of at least 1.5.

Attention! We recommend using only stretchy fabrics for sewing this garment.

You can determine the stretch factor of your fabric yourself. Mark 10 cm (4") along the crosswise grain of the fabric, lay a ruler next to the marked section, and stretch the fabric. Divide the measurement you get by 10.

The dress in the photo is made of knit fabric. The fabric is medium-weight, soft, pliable, and stretchy. The fiber content is 60% viscose + 30% polyester + 10% elastane. The fabric weight is 180 g/m². The stretch factor of the knit fabric is 1.5.

FABRIC AND NOTIONS REQUIREMENTS

1. Main fabric, 140 cm wide, with a directional print/nap, in meters:

Height, cm	Size							
	34	36	38	40-44	46	48	50	52
1 (154-160)	1.5	1.85	1.85	1.9	1.95	2.15	2.2	2.25
2 (162-168)	1.55	1.9	1.9	1.95	2	2.25	2.25	2.3
3 (170-176)	1.6	1.95	1.95	2	2.05	2.3	2.3	2.35
4 (178-184)	1.65	2	2	2.05	2.1	2.35	2.4	2.4

Main fabric, 55" wide, with a directional print/nap, in yards:

Height, ft	Size					
	34	36-38	40-44	46	48-50	52
1 (5'1"-5'3")	1 5/8	2	2 1/8	2 1/8	2 3/8	2 1/2
2 (5'4"-5'6")	1 3/4	2 1/8	2 1/8	2 1/8	2 1/2	2 1/2
3 (5'7"-5'9")	1 3/4	2 1/8	2 1/8	2 1/4	2 1/2	2 5/8
4 (5'10"-6'1")	1 3/4	2 1/8	2 1/4	2 1/4	2 5/8	2 5/8

IMPORTANT! When purchasing fabric, please account for shrinkage and buy 5% more than required.

2. Stitched bias-cut fusible stay tape with stitch reinforcement, 1.5 cm (5/8") wide — 77-93 cm (30 3/8-36 5/8")

3. Elastic, 1 cm (3/8") wide — 51-82 cm (20 1/8-32 1/4"), depending on the size. Length including seam allowances is specified on the pattern

4. One plastic buckle with an inner diameter of 3-3.5 cm (1 1/8-1 3/8")

5. Matching thread — 5 spools (1 spool for the sewing machine + 4 spools for the overlocker).

TOOLS AND EQUIPMENT

- sewing machine for construction
- overlocker for stitching and finishing seam allowances. This may be replaced with a stretch overlock stitch or a zigzag stitch on a regular sewing machine (overlock or zigzag stitch width 2–3 mm, stitch length 2.5 mm)
- coverstitch or coverlock machine for finishing the garment hem. If you don't have a coverstitch machine, the hem can be finished with a twin needle on a regular sewing machine with a zigzag function

***IMPORTANT!** We recommend using specialty needles when working with knit fabrics (for example, STRETCH, SUPER STRETCH, JERSEY, etc.). These have a ballpoint needle tip that parts the loops of the knit fabric when sewing and does not pierce the threads.*

PATTERN PIECES LIST

From main fabric:

- front bodice – cut 1
- back skirt – cut 1 on fold
- back bodice – cut 1 on fold
- left front skirt – cut 1
- right front skirt – cut 1
- sleeve – cut 2
- neckline binding – cut 1

***IMPORTANT!** Don't forget to transfer all pattern markings and notches onto the fabric.*

SEAM ALLOWANCES

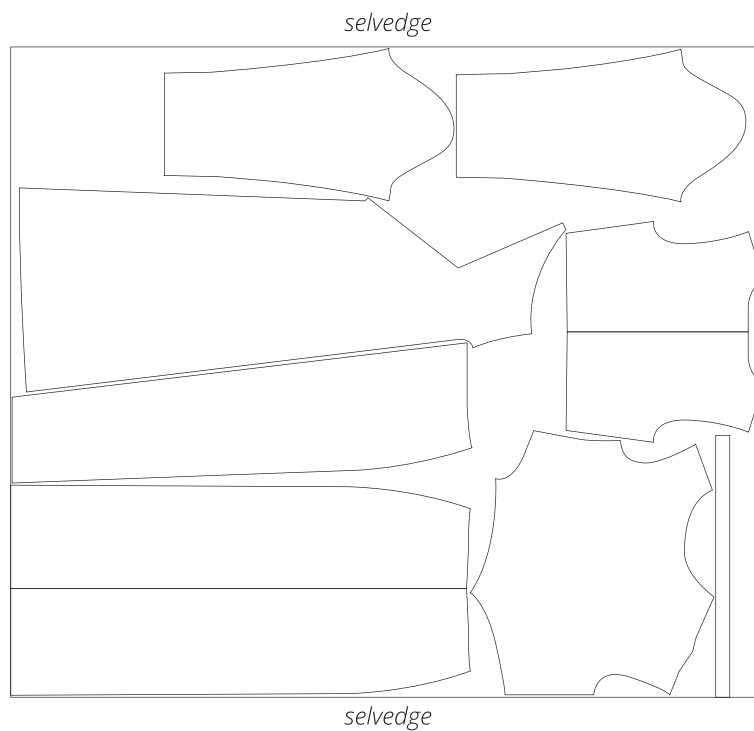
All pattern pieces include seam allowances as follows:

- garment hem allowance – 2 cm (3/4")
- sleeve hem allowance – 2 cm (3/4")
- all other edges – 1 cm (3/8")

Take this into account when laying out the pattern pieces on the fabric.

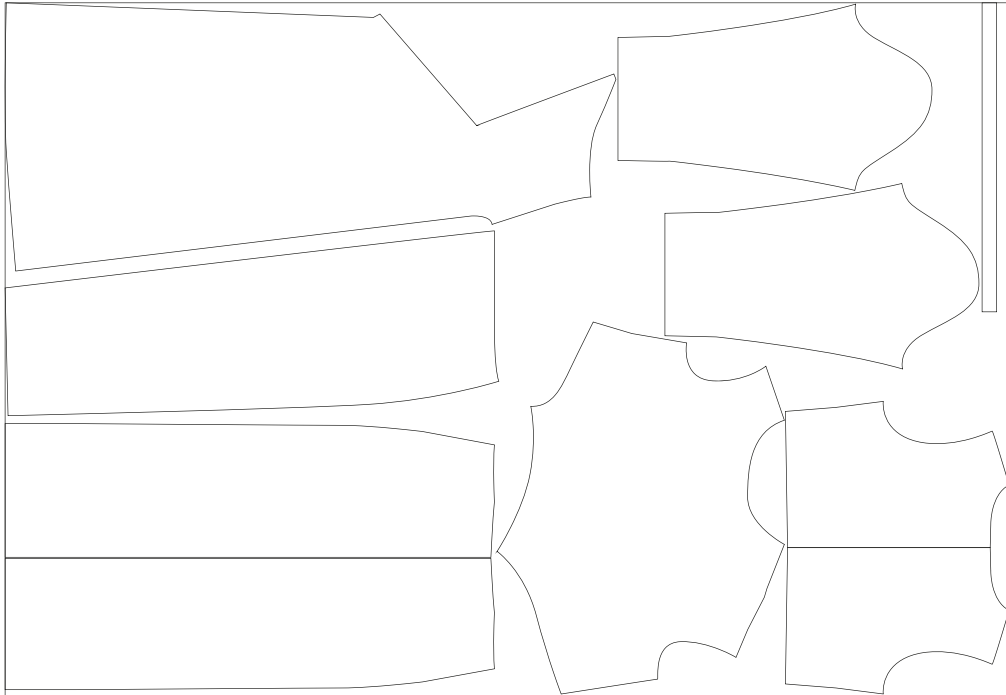
CUTTING LAYOUT

Main fabric, 140 cm (55") wide, with a directional print/nap, cut on a single layer,
for size 34 in all heights



Main fabric, 140 cm (55") wide, with a directional print/nap, cut on a single layer,
for sizes 36–46 in all heights

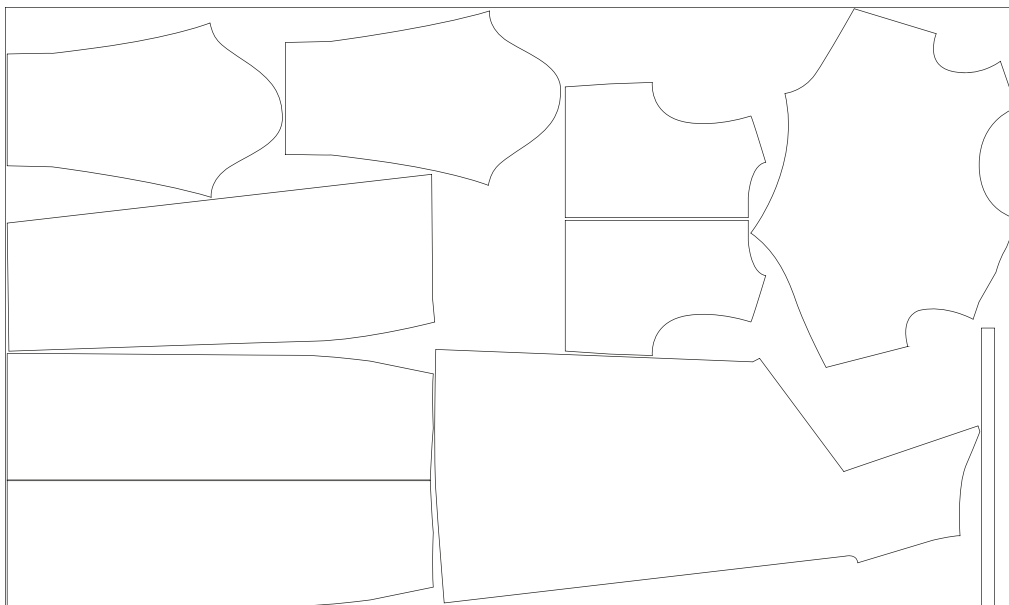
selvedge



selvedge

Main fabric, 140 cm (55") wide, with a directional print/nap, cut on a single layer,
for sizes 48–52 in all heights

selvedge



selvedge

READY? LET'S GET SEWING!



5. Machine-stitch at 5 mm (just under 1/4") from the waist and shoulder edges. Do not backstitch.



6. Sew two parallel rows of gathering stitches along the waist edge of the front bodice between the notches, at 5 mm (just under 1/4") and 1.2 cm (about 1/2") from the edge. Do not backstitch. Use a 4 mm stitch length.

7. Pull the bobbin threads to gather the waist edge. Distribute the gathers evenly. Gather to the length indicated on the pattern.

Overlock the waistline edges, with the right side facing up. Press the seam.

Important! Do not overlock the section with the pleats.