

FROM THE FOUNDER OF THE VIKISEWS® BRAND



Back in 2016, when I started making my first sewing patterns and instruction manuals, my main goal was to solve the problems I personally faced at the beginning of my sewing journey: the lack of stylish patterns that provide a great fit and contain clear sewing instructions. That's how Vikisews was born—a brand designed to help you create fashionable, on-trend clothing with your own hands.



The sewing instructions we create is the result of our team's careful, meticulous work. May they help you develop your sewing hobby—or even turn it into your life's work! Enjoy every step of the sewing process and create a thoughtful, stylish wardrobe!

If you have any questions, we're always here to help: info@vikisews.com



AKSINIA PATTERN DESCRIPTION

Aksinia is a close-fitting dress with a slight flare towards the bottom. The front has a drop-shaped cutout. The stand collar closes with hooks and eyes at the center front.

The long set-in sleeves are close fitting and feature gathered cuffs at the bottom. The dress is lined at the front and back. Aksinia is below-knee length.



PLEASE READ BEFORE USE

The contents of this pattern are copyright protected and belong exclusively to Vikisews. You may use Vikisews patterns for personal use. It is prohibited to share Vikisews patterns and instructions with third parties, as well as to publish patterns and instructions online for public access. **Non-compliance with the mentioned rules is a violation of the US copyright law and may result in civil liability and criminal prosecution.**

You may use Vikisews patterns for commercial use, to sew custom-made garments and/or create fashion collections, on the condition that the patterns are solely used in a manufacturing setting and are not further shared with individuals.

TOTAL EASE ALLOWANCE

	Bust ease	Waistline ease	Hipline ease	Upper arm ease
cm	-7.6 to -9	1 – 0.9	-2.2 to -0.2	-1.2 to -2.6
inches	-3 to -3 1/2	3/8	-7/8 to -1/8	-1/2 to -1

GARMENT LENGTH, SLEEVE LENGTH

Height, cm	Center back length, cm	Sleeve length including cuff, cm
1 (154–160)	114.7–118.1	
2 (162–168)	117.7–121.1	56.9–58.8
3 (170–176)	120.7–124.1	59.3–61.2
4 (178–184)	123.7–127.1	61.7–63.6 64.1–66

Height, ft	Center back length, in	Sleeve length including cuff, in
1 (5'1"–5'3")	45 1/8–46 1/2	21 3/8–22 1/8
2 (5'4"–5'6")	46 3/8–47 5/8	22 1/8–22 7/8
3 (5'7"–5'9")	47 1/2–48 7/8	22 7/8–23 5/8
4 (5'10"–6'1")	48 3/4–50	23 5/8–24 3/8

SUGGESTED FABRICS

To sew this dress, choose soft, medium-stretch or high-stretch knit fabrics of medium weight made of natural, artificial, blended, or synthetic fibers.

The following fabrics are recommended: knits, sweater knits, and ribbed knits. The stretch factor should be at least 1.5.

For the lining, we recommend lingerie mesh.

Attention! We recommend using only stretchy fabrics for this garment.

You can determine the stretch factor of your fabric yourself. Mark 10 cm (4") along the crosswise grain of the fabric, lay a ruler next to the marked section, and stretch the fabric. Divide the measurement you get by 10.

The dress in the photo is made of openwork knits. The fabric is medium weight, soft, and high-stretch. The fiber content is 92% polyester + 8% elastane. The fabric weight is 185 g/m².

The stretch factor is 1.7.

The lining is made of lingerie mesh. The fiber content is 90% polyester + 10% elastane. The fabric weight is 100 g/m². The stretch factor is 1.5.

FABRIC AND NOTIONS REQUIREMENTS

1. Main fabric, 140 cm wide, with a directional print/nap, in meters:

Height, cm	Size							
	34	36	38	40-42	44-46	48	50	52
1 (154-160)	1.45	1.45	1.55	1.7	1.8	1.8	1.95	2.25
2 (162-168)	1.45	1.45	1.55	1.75	1.8	1.85	2	2.35
3 (170-176)	1.5	1.5	1.6	1.8	1.85	1.9	2.05	2.4
4 (178-184)	1.5	1.55	1.6	1.85	1.9	1.95	2.1	2.45

Main fabric, 55" wide, with a directional print/nap, in yards:

Height, ft	Size							
	34	36	38	40-42	44-46	48	50	52
1 (5'1"-5'3")	1 5/8	1 5/8	1 3/4	1 7/8	2	2	2 1/8	2 1/2
2 (5'4"-5'6")	1 5/8	1 5/8	1 3/4	1 7/8	2	2	2 1/8	2 5/8
3 (5'7"-5'9")	1 5/8	1 5/8	1 3/4	2	2	2 1/8	2 1/4	2 5/8
4 (5'10"-6'1")	1 5/8	1 3/4	1 3/4	2	2 1/8	2 1/8	2 1/4	2 5/8

2. Lining fabric, 140 cm wide, with a directional print, in meters:

Height, cm	Size									
	34	36	38	40	42	44	46	48	50	52
1 (154–160)	1.2	1.25	1.25	1.25	1.25	1.3	1.55	1.8	1.95	2.25
2 (162–168)	1.25	1.25	1.25	1.3	1.3	1.35	1.6	1.85	2	2.35
3 (170–176)	1.3	1.3	1.3	1.3	1.35	1.35	1.65	1.9	2.05	2.4
4 (178–184)	1.3	1.3	1.35	1.35	1.35	1.4	1.7	1.95	2.1	2.45

Lining fabric, 55" wide, with a directional print, in yards:

Height, ft	Size								
	34	36	38–40	42	44	46	48	50	52
1 (5'1"–5'3")	1 1/4	1 3/8	1 3/8	1 3/8	1 3/8	1 3/4	2	2 1/8	2 1/2
2 (5'4"–5'6")	1 3/8	1 3/8	1 3/8	1 3/8	1 1/2	1 3/4	2	2 1/8	2 5/8
3 (5'7"–5'9")	1 3/8	1 3/8	1 3/8	1 1/2	1 1/2	1 3/4	2 1/8	2 1/4	2 5/8
4 (5'10"–6'1")	1 3/8	1 3/8	1 1/2	1 1/2	1 1/2	1 7/8	2 1/8	2 1/4	2 5/8

IMPORTANT! When purchasing fabric, please account for shrinkage and buy 5% more than required.

3. Clear elastic, 6 mm (1/4") wide — 35–45 cm (14–18")

4. Two S1 hook-and-eye closures

5. Matching thread — 5 spools (1 spool for the sewing machine + 4 spools for the overlocker)

TOOLS AND EQUIPMENT

- sewing machine for construction
- overlocker for stitching and finishing raw edges. This may be replaced with a stretch overlock stitch or a zigzag stitch on the sewing machine (overlock or zigzag stitch width 2–3 mm, stitch length 2.5 mm)
- coverstitch or coverlock machine for finishing the garment hem. If you don't have a coverstitch machine, the hem can be finished with a twin needle on any regular sewing machine with a zigzag function

***IMPORTANT!** We recommend using specialty needles when working with knit fabrics (for example, STRETCH, SUPER STRETCH, JERSEY, etc.). These are ballpoint needles, so they part the threads of the fabric you are stitching without piercing them.*

PATTERN PIECES LIST

1. From main fabric:

- front — cut 1 on fold
- back — cut 1 on fold
- sleeve — cut 2
- cuff — cut 2
- stand collar — cut 2

2. From lining fabric:

- front — cut 1 on fold
- back — cut 1 on fold
- stand collar — cut 1

***IMPORTANT!** Don't forget to transfer all pattern markings and notches onto the fabric.*

SEAM ALLOWANCES

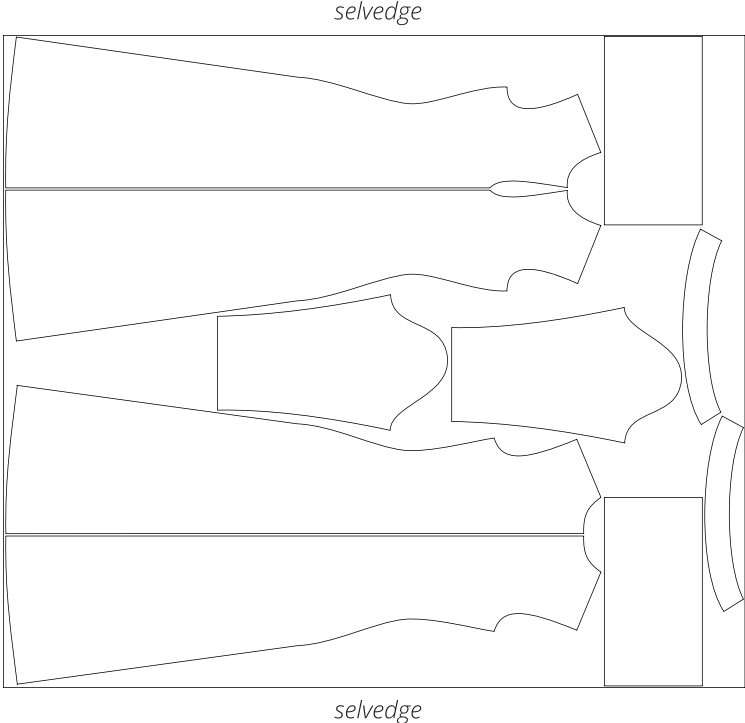
All pattern pieces include seam allowances as follows::

- garment hem and cuff hem allowances — 2 cm (3/4")
- all other edges— 1 cm (3/8")

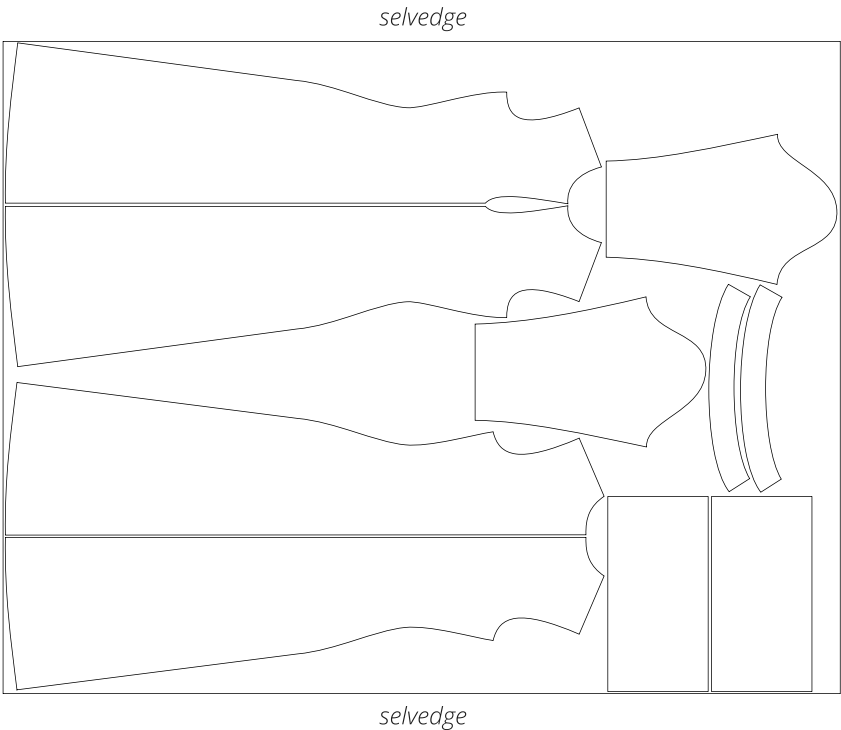
Take this into account when laying out the pattern pieces on the fabric.

CUTTING LAYOUT

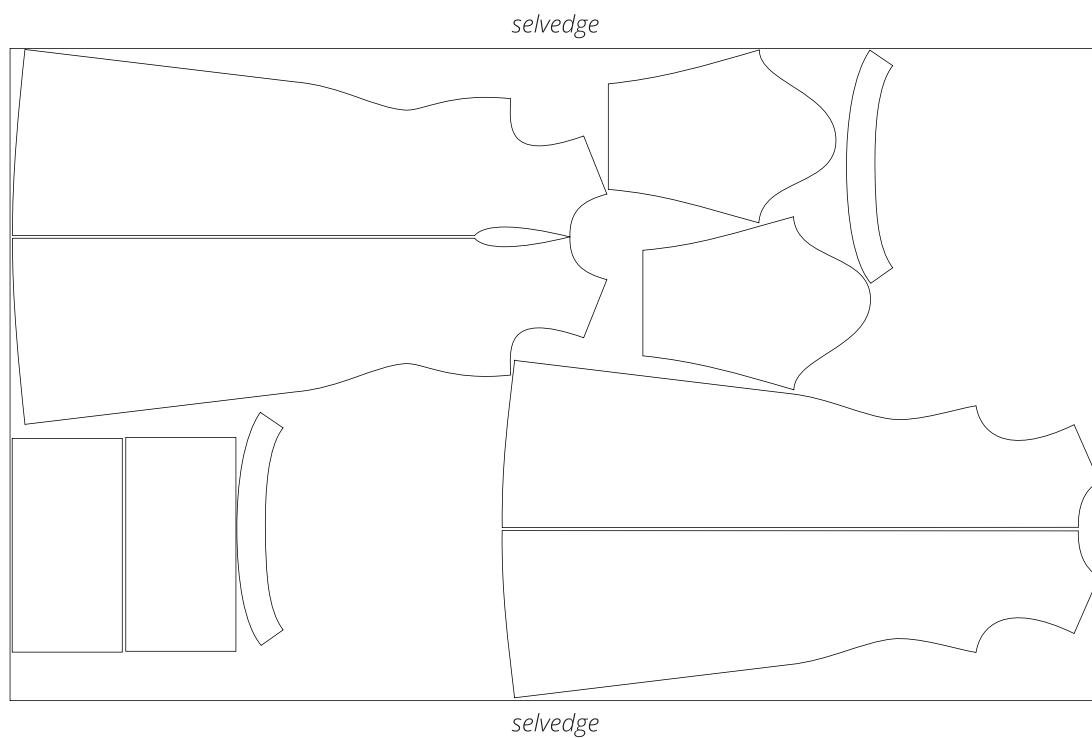
Main fabric, 140 cm (55") wide, with a directional print/nap, cut on a single layer,
for sizes 34-38 in all heights



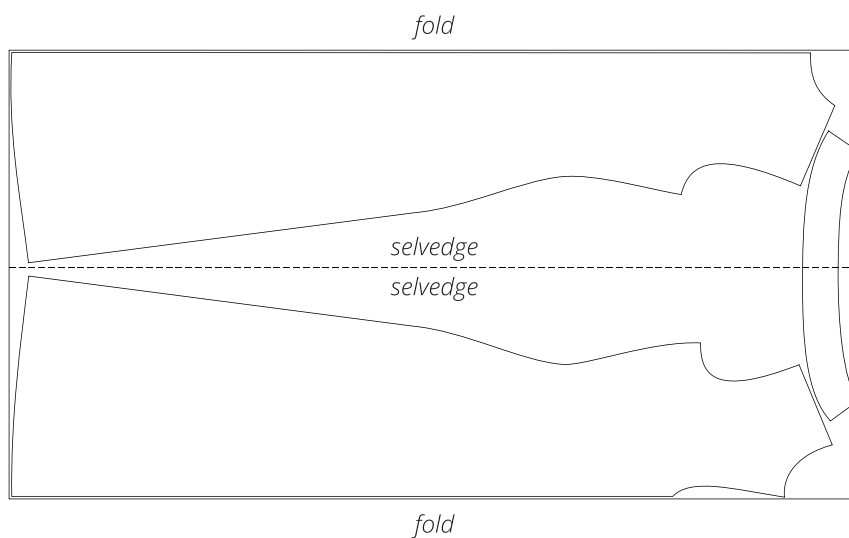
Main fabric, 140 cm (55") wide, with a directional print/nap, cut on a single layer,
for sizes 40-42 in all heights



Main fabric, 140 cm (55") wide, with a directional print/nap, cut on a single layer,
for sizes 44-52 in all heights

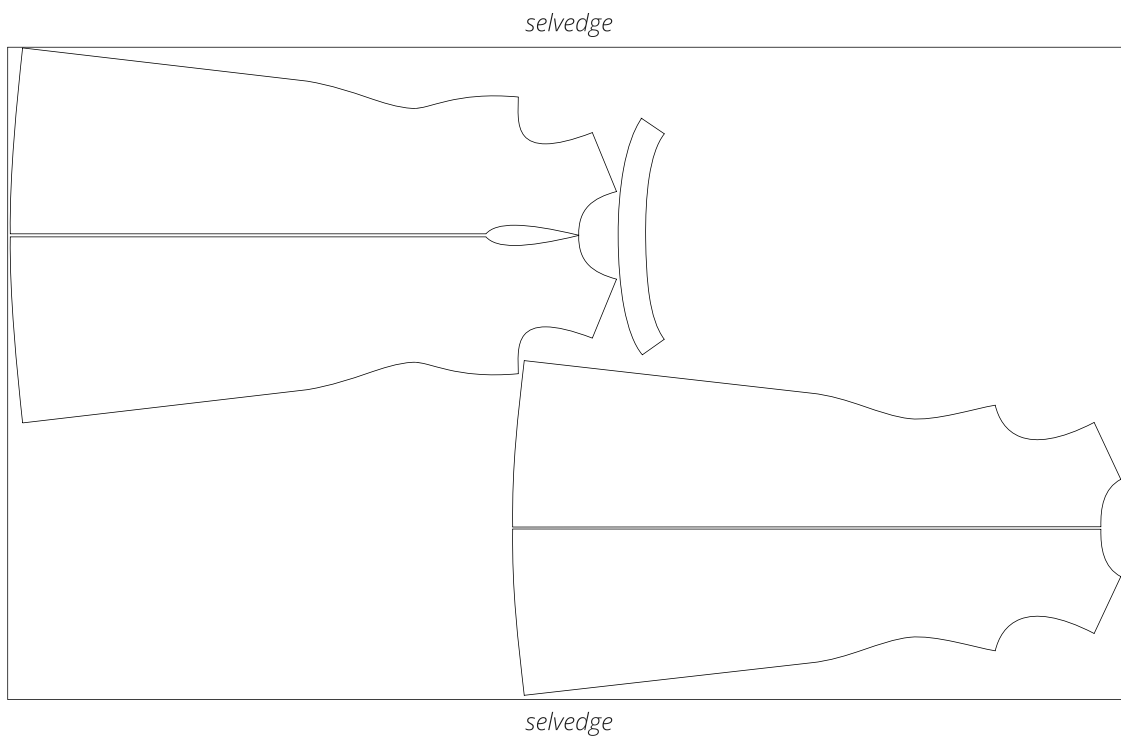


Lining fabric, 140 cm (55") wide, with a directional print, cut with two folds,
for sizes 34-42 in all heights



Attention! Cut only one stand collar piece.

Lining fabric, 140 cm (55") wide, with a directional print, cut on a single layer,
for sizes 44–52 in all heights



READY? LET'S GET SEWING!



9. Place the front and back pieces right sides together. Align the shoulder edges and pin. Stitch on the overlocker, with the back piece facing up.

Use a 4-thread overlocker for this step, as well as for the following similar steps. This may be replaced with a stretch overlock stitch or a zigzag stitch on the sewing machine.

Important! All pattern pieces include 1 cm (3/8") seam allowances. The overlocker stitch width is 7 mm (just over 1/4"), so trim the seam allowances by 3 mm (1/8") either before stitching or allow the overlocker to trim it while stitching.



10. Remove the staystitches on the front piece and remove the hand stitches from the notches.



11. Press the shoulder and side seam allowances towards the front piece.



12. Tie the overlocker thread tails at the bottom edge into knots. Using a latch hook or needle, hide them between the fabric layers.