

# FROM THE FOUNDER OF THE #VIKISEWS BRAND

---

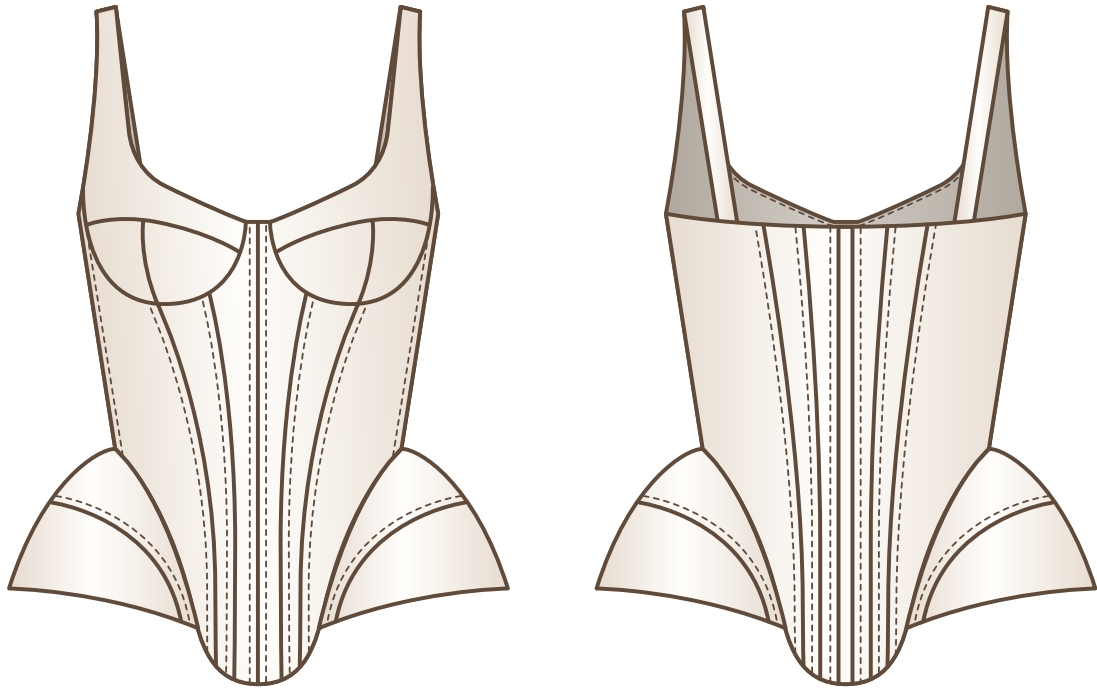


Back in 2016, when I was working on my first set of sewing instructions, I was trying to write them in such a way that even a complete beginner could easily understand and use them to create their very first garment. These instructions laid the foundation for the Vikisews brand, its vision and its mission. I wanted to create modern patterns with the utmost detailed and clear instructions.

Now, with each new collection we are constantly improving our instructions, amending them and adding more relevant details. By the time the final product reaches you, our drafters, correctors, and editors would have spent weeks perfecting every word and every photograph. If you compile a few of our instructions together, you will get a sewing manual that will assist you in sewing all kinds of garments at any difficulty level.

And I would be very happy if these instructions helped you to turn your hobby into a lifelong passion... Enjoy the process! Create your ultimate dream wardrobe! Wear your garments proudly for years to come!

If you have any questions, please contact us at [info@vikisews.com](mailto:info@vikisews.com) — we are always there to help.



## ZINNIA PATTERN DESCRIPTION

---

Zinnia is a close-fitting lined bustier top with an accentuated waist. It features foam bust cups and grown-on straps. The front and back are fitted with princess seams stiffened with rigilene boning. There are shaped inserts padded with foam. The top closes with a separating zipper in the center back seam. Zinnia is below-waist length.



## IMPORTANT!

---

The contents of this pattern are copyright protected and belong exclusively to Vikisews. You may use Vikisews patterns for personal use. It is prohibited to share Vikisews patterns and instructions with third parties, as well as to publish patterns and instructions online for public access. **Non-compliance with the mentioned rules is a violation of the US copyright law and may result in civil liability and criminal prosecution.**

You may use Vikisews patterns for commercial use, to sew custom-made garments and/or create fashion collections, on the condition that the patterns are solely used in a manufacturing setting and are not further shared with individuals.

# TOTAL EASE ALLOWANCE

---

	Bust ease	Waistline ease (estimated)
cm	2.2–5.5	1.3–3.2
inches	$\frac{7}{8}$ –2 $\frac{1}{8}$	$\frac{1}{2}$ –1 $\frac{1}{4}$

# GARMENT LENGTH, SLEEVE LENGTH

---

Height, cm	Front length from waist down, cm	Back length from waist down, cm
1 (154–160)	14.4–16.2	16.4–18.6
2 (162–168)	15.4–17.2	17.4–19.6
3 (170–176)	16.4–18.2	18.4–20.7
4 (178–184)	17.4–19.2	19.4–21.6

Height, ft	Front length from waist down, in	Back length from waist down, in
1 (5'1"–5'3")	5 $\frac{5}{8}$ –6 $\frac{3}{8}$	6 $\frac{1}{2}$ –7 $\frac{3}{8}$
2 (5'4"–5'6")	6 $\frac{1}{8}$ –6 $\frac{3}{4}$	6 $\frac{7}{8}$ –7 $\frac{3}{4}$
3 (5'7"–5'9")	6 $\frac{1}{2}$ –7 $\frac{1}{8}$	7 $\frac{1}{4}$ –8 $\frac{1}{8}$
4 (5'10"–6'1")	6 $\frac{7}{8}$ –7 $\frac{1}{2}$	7 $\frac{5}{8}$ –8 $\frac{1}{2}$

# SUGGESTED FABRIC

---

To sew this bustier top, choose heavyweight or medium weight, structured, non-stretch suiting and dress-weight fabrics made of natural, artificial, blended, or synthetic fibers. The following fabrics are recommended: matte satin (Peau de Soie), denim, jacquard, artificial or natural silk, faux leather.

**Attention!** We do not recommend lightweight, soft, stretchy fabrics (chiffon, organza, stretch lace).

For the cups, we recommend using 3 mm ( $\frac{1}{8}$ " ) thick bra foam. The foam is double-faced. The fiber content is polyester and cotton.

For the lining, use lining fabrics made of artificial, blended, or synthetic fibers.

The bustier top in the photo is made of matte satin (Peau de Soie). The fabric is heavyweight and non-stretch. The fiber content is 100% polyester. The fabric weight is 280 g/m<sup>2</sup>.

The lining is made of 55% polyester and 45% viscose. The fabric weight is 100 g/m<sup>2</sup>.

## FABRIC AND NOTIONS REQUIREMENTS

1. Main fabric, 140 cm wide, with a directional print/nap, in meters:

Height, cm	Size					
	34-36	38	40	42	44-46	48-52
1 (154-160)	0.55	0.6	0.6	0.6	0.7	0.75
2 (162-168)	0.55	0.6	0.6	0.65	0.7	0.75
3 (170-176)	0.6	0.6	0.65	0.65	0.7	0.8
4 (178-184)	0.6	0.65	0.7	0.7	0.75	0.85

Main fabric, 55" wide, with a directional print/nap, in yards:

Height, ft	Size					
	34-36	38	40	42	44-46	48-52
1 (5'1"-5'3")	$\frac{5}{8}$	$\frac{5}{8}$	$\frac{5}{8}$	$\frac{5}{8}$	$\frac{3}{4}$	$\frac{7}{8}$
2 (5'4"-5'6")	$\frac{5}{8}$	$\frac{5}{8}$	$\frac{5}{8}$	$\frac{3}{4}$	$\frac{3}{4}$	$\frac{7}{8}$
3 (5'7"-5'9")	$\frac{5}{8}$	$\frac{5}{8}$	$\frac{3}{4}$	$\frac{3}{4}$	$\frac{3}{4}$	$\frac{7}{8}$
4 (5'10"-6'1")	$\frac{5}{8}$	$\frac{3}{4}$	$\frac{3}{4}$	$\frac{3}{4}$	$\frac{7}{8}$	$\frac{7}{8}$

2. Lining fabric, 140 cm wide, with a directional print, in meters:

Height, cm	Size								
	34-36	38	40	42	44	46	48	50	52
1 (154-160)	0.5	0.5	0.55	0.6	0.6	0.65	0.75	0.75	0.75
2 (162-168)	0.5	0.55	0.6	0.6	0.65	0.65	0.75	0.75	0.75
3 (170-176)	0.55	0.55	0.6	0.65	0.65	0.7	0.75	0.75	0.8
4 (178-184)	0.6	0.6	0.65	0.65	0.7	0.7	0.75	0.8	0.8

Lining fabric, 55" wide, with a directional print, in yards:

Height, ft	Size						
	34-36	38	40	42	44	46	48-52
1 (5'1"-5'3")	½	½	⅝	⅝	⅝	¾	⅞
2 (5'4"-5'6")	½	⅝	⅝	⅝	¾	¾	⅞
3 (5'7"-5'9")	⅝	⅝	⅝	¾	¾	¾	⅞
4 (5'10"-6'1")	⅝	⅝	¾	¾	¾	¾	⅞

3. Bra foam, 50 cm wide, 3 mm thick, for all heights, in meters:

34	36-38	40-42	44-46	48-50	52
1 piece (0.5)	2 pieces (0.3)	2 pieces (0.35)	2 pieces (0.4)	2 pieces (0.45)	2 pieces (0.5)

Bra foam, 20" wide, 3 mm (⅛") thick, for all heights, in yards:

34	36-46	48-52
1 piece (½)	2 pieces (¾)	2 pieces (½)

**IMPORTANT!** When purchasing fabric, please account for shrinkage and buy 5% more than required.

4. Lightweight woven interfacing, 140 cm wide, 55 g/m<sup>2</sup>, cut in two steps, in meters:

Size	34-36			38			40			42		
	Step 1	Step 2	Total	Step 1	Step 2	Total	Step 1	Step 2	Total	Step 1	Step 2	Total
Heights 1-2	0.55	0.55	1.1	0.6	0.6	1.2	0.6	0.65	1.25	0.65	0.65	1.3
Heights 3-4	0.6	0.6	1.2	0.65	0.65	1.3	0.7	0.65	1.35	0.7	0.7	1.4

Size	44			46			48-50			52		
	Step 1	Step 2	Total	Step 1	Step 2	Total	Step 1	Step 2	Total	Step 1	Step 2	Total
Heights 1-2	0.7	0.65	1.35	0.7	0.7	1.4	0.75	0.75	1.5	0.75	0.8	1.55
Heights 3-4	0.75	0.7	1.45	0.75	0.75	1.5	0.85	0.8	1.65	0.85	0.85	1.7

Lightweight woven interfacing, 55" wide, 55 g/m<sup>2</sup>, cut in two steps, in yards:

Size	34-36			38			40			42		
	Step 1	Step 2	Total	Step 1	Step 2	Total	Step 1	Step 2	Total	Step 1	Step 2	Total
Heights 1-2	$\frac{5}{8}$	$\frac{5}{8}$	1 $\frac{1}{4}$	$\frac{5}{8}$	$\frac{5}{8}$	1 $\frac{1}{4}$	$\frac{5}{8}$	$\frac{3}{4}$	1 $\frac{3}{8}$	$\frac{3}{4}$	$\frac{3}{4}$	1 $\frac{3}{8}$
Heights 3-4	$\frac{5}{8}$	$\frac{5}{8}$	1 $\frac{1}{4}$	$\frac{3}{4}$	$\frac{3}{4}$	1 $\frac{3}{8}$	$\frac{3}{4}$	$\frac{3}{4}$	1 $\frac{1}{2}$	$\frac{3}{4}$	$\frac{3}{4}$	1 $\frac{1}{2}$

Size	44			46			48-50			52		
	Step 1	Step 2	Total	Step 1	Step 2	Total	Step 1	Step 2	Total	Step 1	Step 2	Total
Heights 1-2	$\frac{3}{4}$	$\frac{3}{4}$	1 $\frac{1}{2}$	$\frac{3}{4}$	$\frac{3}{4}$	1 $\frac{1}{2}$	$\frac{7}{8}$	$\frac{7}{8}$	1 $\frac{5}{8}$	$\frac{7}{8}$	$\frac{7}{8}$	1 $\frac{3}{4}$
Heights 3-4	$\frac{7}{8}$	$\frac{3}{4}$	1 $\frac{5}{8}$	$\frac{7}{8}$	$\frac{7}{8}$	1 $\frac{5}{8}$	$\frac{7}{8}$	$\frac{7}{8}$	1 $\frac{3}{4}$	$\frac{7}{8}$	$\frac{7}{8}$	1 $\frac{7}{8}$

5. Stitched bias-cut fusible stay tape with stitch reinforcement, 1.5 cm wide, for all heights, in meters:

Height, cm	Size									
	34	36	38	40	42	44	46	48	50	52
1 (154–160)	4.9	5	5.2	5.3	5.4	5.6	5.8	6	6.1	6.3
2 (162–168)	5	5.1	5.3	5.4	5.5	5.7	5.9	6.1	6.2	6.4
3 (170–176)	5.1	5.2	5.4	5.5	5.6	5.8	6	6.2	6.3	6.5
4 (178–184)	5.2	5.3	5.5	5.6	5.7	5.9	6.1	6.3	6.4	6.6

Stitched bias-cut fusible stay tape with stitch reinforcement, 5/8" wide, for all heights, in yards:

Height, ft	Size									
	34	36	38	40	42	44	46	48	50	52
1 (5'1"–5'3")	5 <sup>3</sup> / <sub>8</sub>	5 <sup>1</sup> / <sub>2</sub>	5 <sup>5</sup> / <sub>8</sub>	5 <sup>3</sup> / <sub>4</sub>	5 <sup>7</sup> / <sub>8</sub>	6 <sup>1</sup> / <sub>8</sub>	6 <sup>3</sup> / <sub>8</sub>	6 <sup>1</sup> / <sub>2</sub>	6 <sup>5</sup> / <sub>8</sub>	6 <sup>7</sup> / <sub>8</sub>
2 (5'4"–5'6")	5 <sup>1</sup> / <sub>2</sub>	5 <sup>5</sup> / <sub>8</sub>	5 <sup>3</sup> / <sub>4</sub>	5 <sup>7</sup> / <sub>8</sub>	6	6 <sup>1</sup> / <sub>4</sub>	6 <sup>1</sup> / <sub>2</sub>	6 <sup>5</sup> / <sub>8</sub>	6 <sup>3</sup> / <sub>4</sub>	7
3 (5'7"–5'9")	5 <sup>5</sup> / <sub>8</sub>	5 <sup>5</sup> / <sub>8</sub>	5 <sup>7</sup> / <sub>8</sub>	6	6 <sup>1</sup> / <sub>8</sub>	6 <sup>3</sup> / <sub>8</sub>	6 <sup>1</sup> / <sub>2</sub>	6 <sup>3</sup> / <sub>4</sub>	6 <sup>7</sup> / <sub>8</sub>	7 <sup>1</sup> / <sub>8</sub>
4 (5'10"–6'1")	5 <sup>5</sup> / <sub>8</sub>	5 <sup>3</sup> / <sub>4</sub>	6	6 <sup>1</sup> / <sub>8</sub>	6 <sup>1</sup> / <sub>4</sub>	6 <sup>1</sup> / <sub>2</sub>	6 <sup>5</sup> / <sub>8</sub>	6 <sup>7</sup> / <sub>8</sub>	7	7 <sup>1</sup> / <sub>4</sub>

6. One separating metal zipper, 40 cm (15 3/4") long, for all sizes in all heights

7. Synthetic whalebone, 5 mm wide, in meters:

Height, cm	Size	
	34–46	48–52
1 (154–160)	3.4	3.3
2 (162–168)	3.6	3.5
3 (170–176)	3.8	3.7
4 (178–184)	4	3.9

Synthetic whalebone, just under 1/4" wide, in yards:

Height, ft	Size	
	34–46	48–52
1 (5'1"–5'3")	3 <sup>3</sup> / <sub>4</sub>	3 <sup>5</sup> / <sub>8</sub>
2 (5'4"–5'6")	3 <sup>7</sup> / <sub>8</sub>	3 <sup>7</sup> / <sub>8</sub>
3 (5'7"–5'9")	4 <sup>1</sup> / <sub>8</sub>	4
4 (5'10"–6'1")	4 <sup>3</sup> / <sub>8</sub>	4 <sup>1</sup> / <sub>4</sub>

**IMPORTANT!** When purchasing fabric, please account for shrinkage and buy 5% more than required.

8. One pair of bra underwires in the necessary size

9. Matching thread — 1 spool

# TOOLS AND EQUIPMENT

---

- sewing machine for construction
- one-sided foot for the sewing machine for attaching the zipper
- loop turner

## PATTERN PIECES LIST

---

### 1. From main interfaced fabric:

- center back — cut 2 (4 interfacing pieces)
- mid back — cut 2 (4 interfacing pieces)
- side back — cut 2 (4 interfacing pieces)
- side front — cut 2 (4 interfacing pieces)
- mid front — cut 2 (4 interfacing pieces)
- center front — cut 2 (4 interfacing pieces)
- top cup — cut 2 (4 interfacing pieces)
- center cup — cut 2 (4 interfacing pieces)
- side cup — cut 2 (4 interfacing pieces)
- top back insert — cut 2 (4 interfacing pieces)
- top front insert — cut 2 (4 interfacing pieces)
- bottom back insert — cut 2 (4 interfacing pieces)
- bottom front insert — cut 2 (4 interfacing pieces)

**IMPORTANT!** Cut the main fabric pieces only after fully interfacing the fabric. Interfacing is applied in two steps: first along the lengthwise grain, and then along the crosswise grain.

### 2. From lining fabric:

- center back lining — cut 2
- side back — cut 2
- side front — cut 2
- center front lining — cut 1
- top cup lining — cut 2
- side cup lining — cut 2
- center cup lining — cut 2
- back insert lining — cut 2
- front insert lining — cut 2

**IMPORTANT!** Don't forget to transfer all pattern markings and notches onto the fabric

### 3. From bra foam:

- top cup — cut 2
- center cup — cut 2
- side cup — cut 2
- top back insert — cut 2
- top front insert — cut 2
- bottom back insert — cut 2
- bottom front insert — cut 2

**Important!** Cut the foam cup and insert pieces last. Before cutting, trim seam allowances on the pattern pieces as follows:

- top cup: trim the bottom seam allowance and along the marked foam line
- center and side cup: trim the top and center seam allowances
- top front and back inserts: trim the bottom and side seam allowances
- bottom front and back inserts: trim the top and side seam allowances

## SEAM ALLOWANCES

---

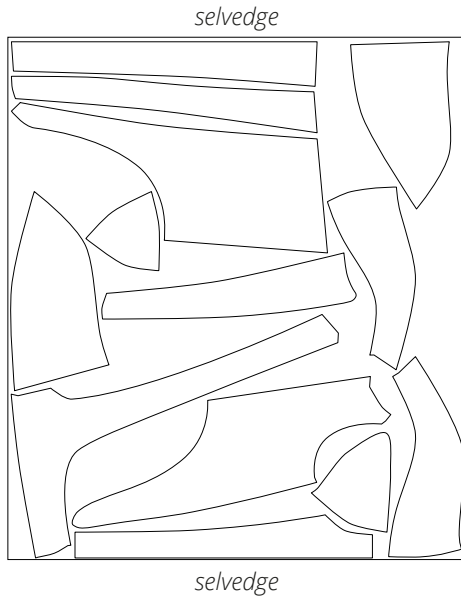
All pattern pieces include seam allowances as follows:

- center seam allowance on the center back pieces— 1.5 cm (5/8")
- all other edges — 1 cm (3/8")

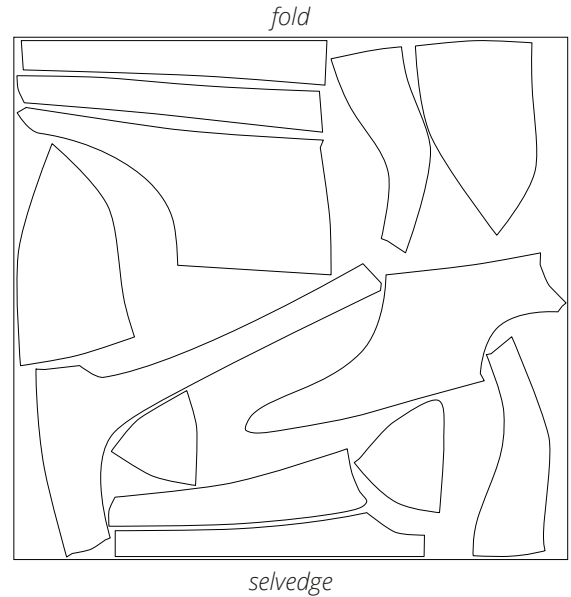
Take this into account when laying out the pattern pieces on the fabric.

# CUTTING LAYOUT

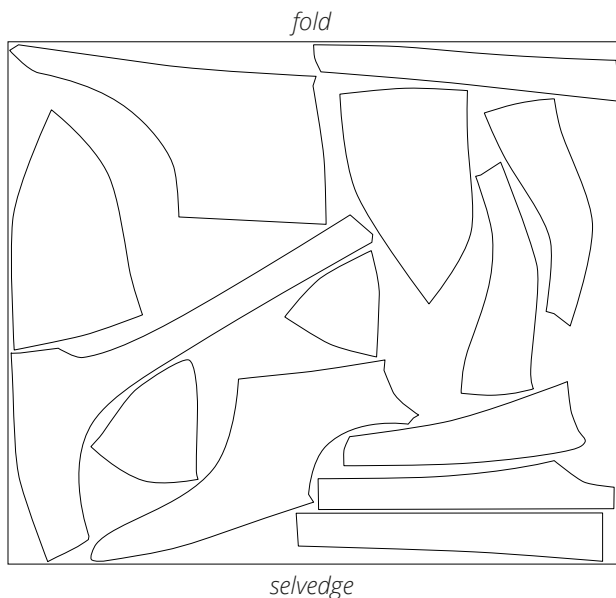
Main fabric, 140 cm (55") wide, with a directional print/nap, cut on fold, for sizes 34–38 in all heights; Interfacing (Step 1), 140 cm (55") wide, cut on fold, for sizes 34–38 in all heights (lengthwise grain)



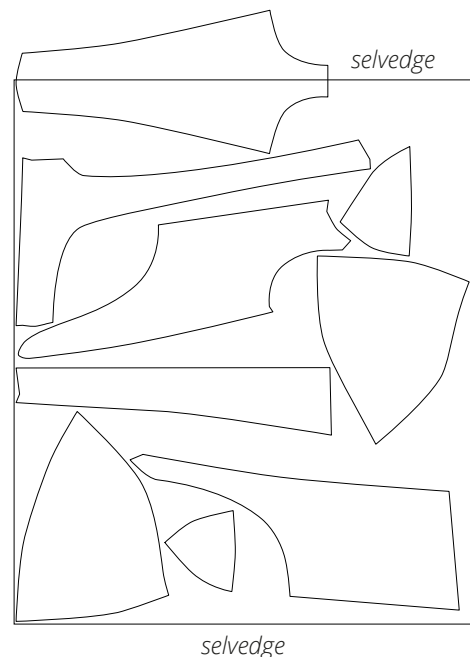
Main fabric, 140 cm (55") wide, with a directional print/nap, cut on fold, for sizes 40–46 in all heights; Interfacing (Step 1), 140 cm (55") wide, cut on fold, for sizes 40–46 in all heights (lengthwise grain)



Main fabric, 140 cm (55") wide, with a directional print/nap, cut on fold, for sizes 48–52 in all heights; Interfacing (Step 1), 140 cm (55") wide, cut on fold, for sizes 48–52 in all heights (lengthwise grain)

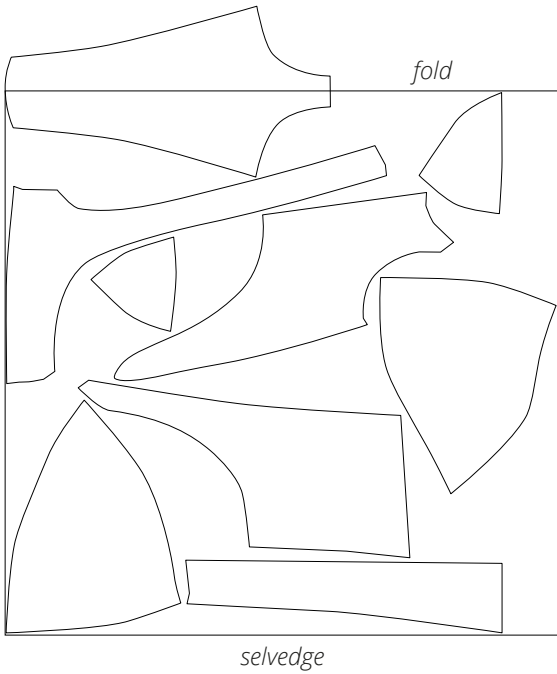


Lining fabric, 140 cm (55") wide, with a directional print, cut on fold, for sizes 34–38 in all heights



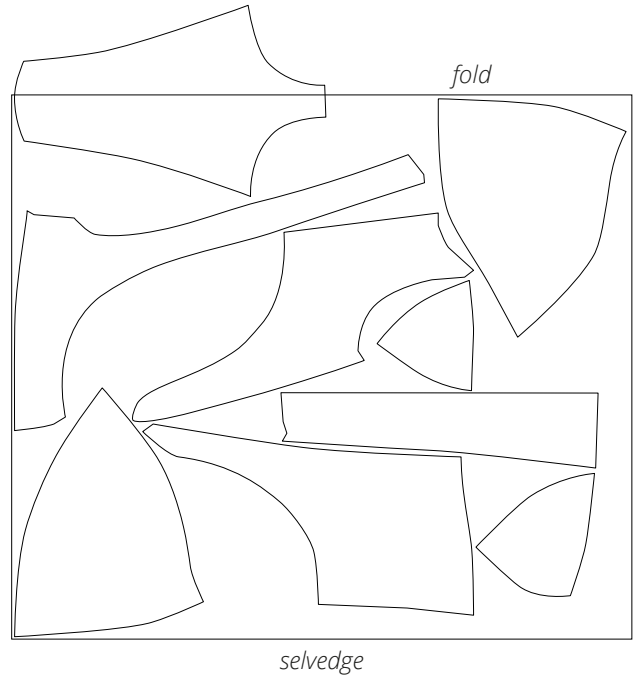
**Important!** Cut the center front lining piece on a single layer out of the leftover fabric.

Lining fabric, 140 cm (55") wide,  
with a directional print, cut on fold,  
for sizes 40–46 in all heights



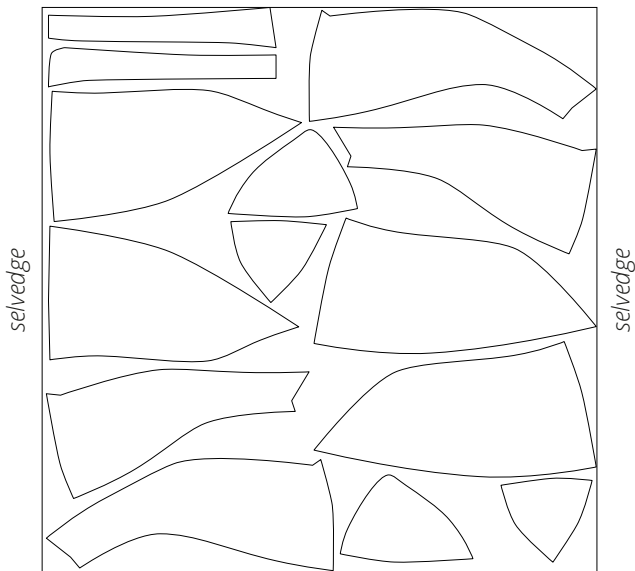
**Important!** Cut the center front lining piece on a single layer out of the leftover fabric.

Lining fabric, 140 cm (55") wide,  
with a directional print, cut on fold,  
for sizes 48–52 in all heights

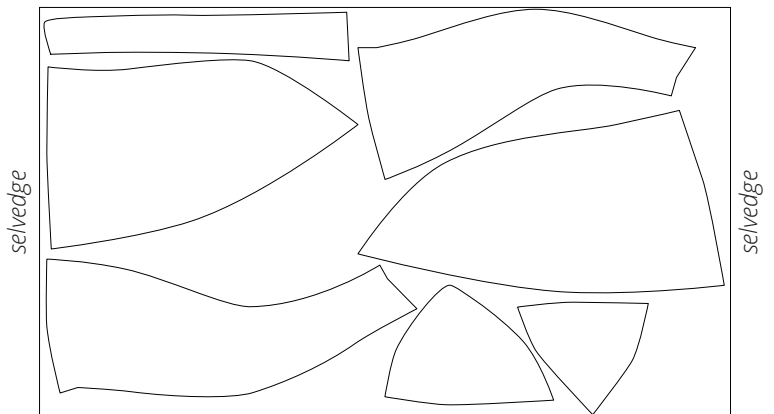


**Important!** The lining piece for the central front section is cut on a single layer out of leftover the fabric

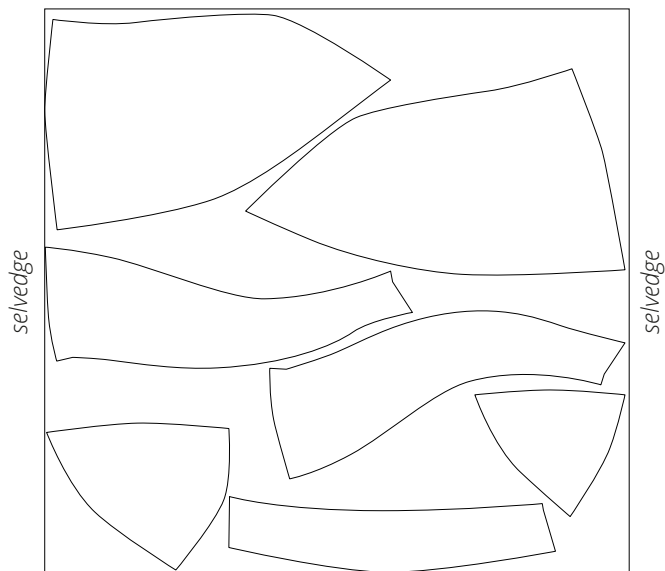
Additional fabric (bra foam), 50 cm  
(19 5/8") wide, cut on a single layer (one  
50×50 cm [20"x20"]piece), for size 34  
in all heights



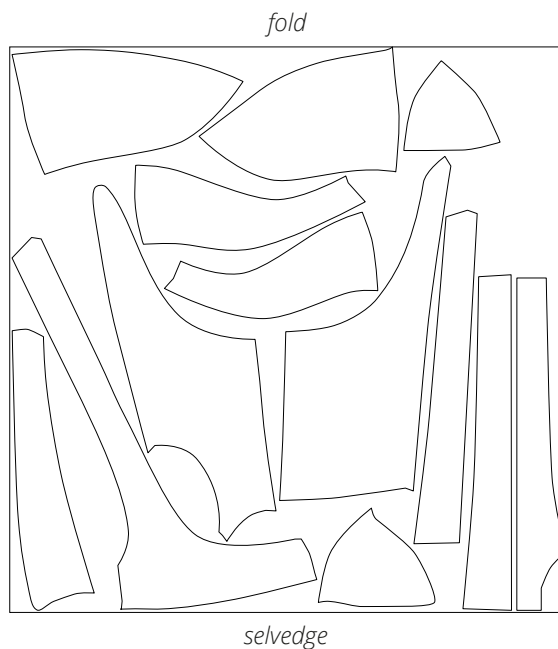
Additional fabric (bra foam), 50 cm  
(19 5/8") wide, cut on a single layer in two  
layers (two 50×50 cm [20"x20"] pieces),  
for sizes 36–38 in all heights



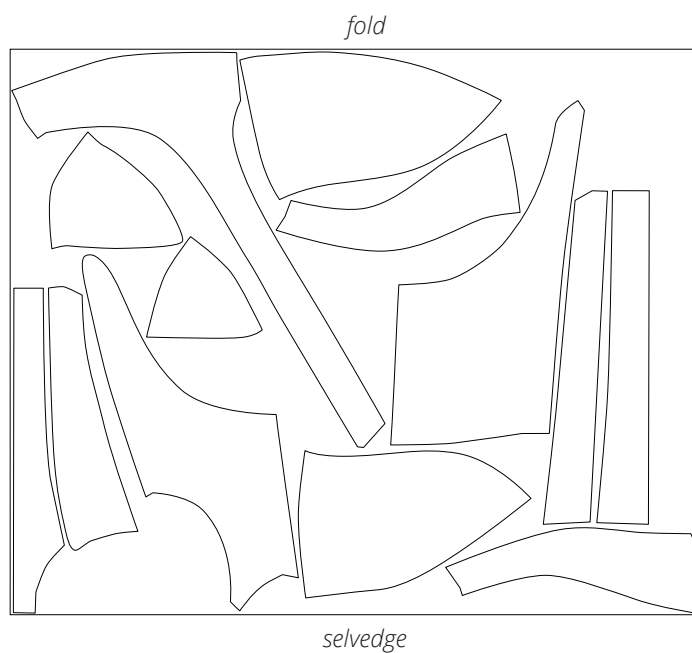
Additional fabric (bra foam), 50 cm (19 5/8") wide, cut on two single layers (two 50x50 [20"x20"] cm pieces), for sizes 40-52 in all heights



Interfacing (Step 2), 140 cm (55") wide, cut on fold, for sizes 34-44 in all heights (crosswise grain)



Interfacing (Step 2), 140 cm (55") wide, cut on fold, for sizes 46-52 in all heights (crosswise grain)



**READY? LET'S GET SEWING!**



Press the seam allowances towards the mid front piece.



Topstitch along the princess seams on the assembled front piece. Stitch on the right side at 7 mm (1/4") from the seam, backstitching at the beginning and end of the seam.

Use a 3 mm stitch length here and for the following similar steps.



Press the front princess seams.