

FROM THE FOUNDER OF THE VIKISEWS® BRAND

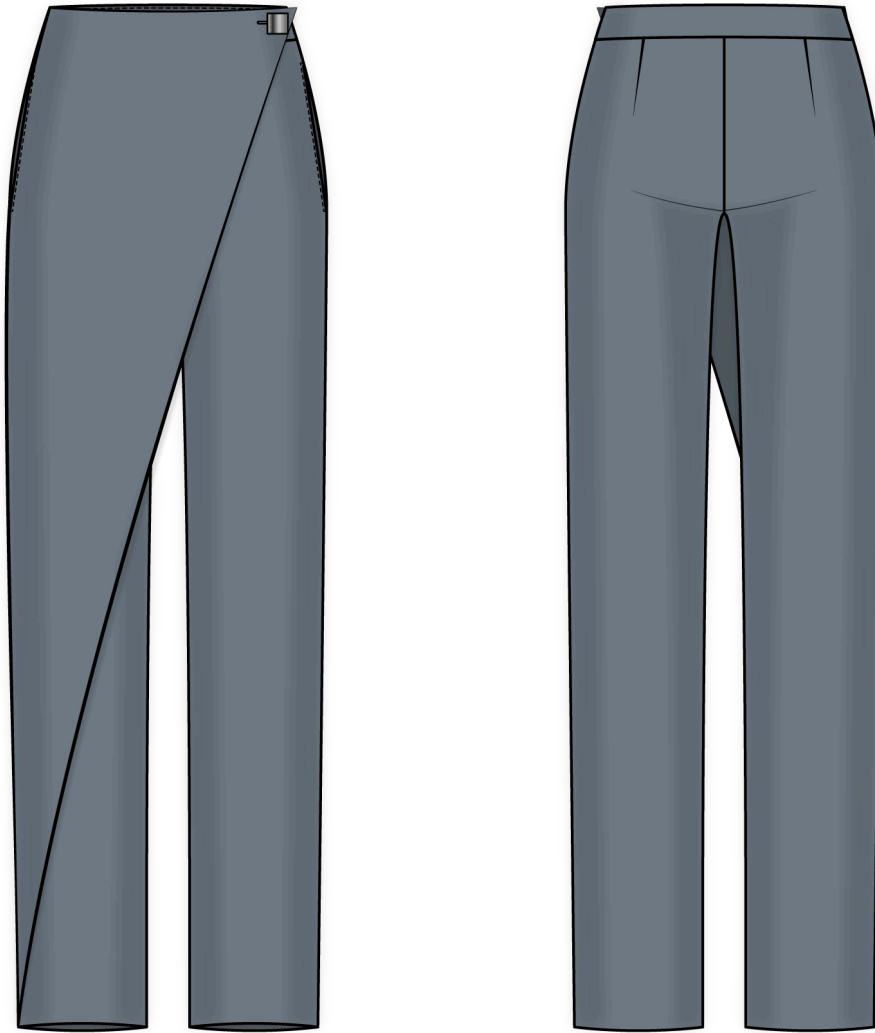


Back in 2016, when I started making my first sewing patterns and instruction manuals, my main goal was to solve the problems I personally faced at the beginning of my sewing journey: the lack of stylish patterns that provide a great fit and contain clear sewing instructions. That's how Vikisews was born—a brand designed to help you create fashionable, on-trend clothing with your own hands.



The sewing instructions we create is the result of our team's careful, meticulous work. May they help you develop your sewing hobby—or even turn it into your life's work! Enjoy every step of the sewing process and create a thoughtful, stylish wardrobe!

If you have any questions, we're always here to help: info@vikisews.com



MEDINA PATTERN DESCRIPTION

Medina is a pair of semi-fitted trousers with a straight silhouette. The right front leg features an asymmetrical pleat that is secured to the left part of the waistband with a button. The back legs are shaped with waist darts. There are pockets in the side seams. The trousers have a fly front zipper closure and an applied waistband that closes with a button and buttonhole. The upper edge of the waistband sits 3 cm (1 1/8") below the natural waistline. The trousers are floor-length.



PLEASE READ BEFORE USE

The contents of this pattern are copyright protected and belong exclusively to Vikisews. You may use Vikisews patterns for personal use. It is prohibited to share Vikisews patterns and instructions with third parties, as well as to publish patterns and instructions online for public access. **Non-compliance with the mentioned rules is a violation of the US copyright law and may result in civil liability and criminal prosecution.**

You may use Vikisews patterns for commercial use, to sew custom-made garments and/or create fashion collections, on the condition that the patterns are solely used in a manufacturing setting and are not further shared with individuals.

TOTAL EASE ALLOWANCE

	Waistline ease (estimated)	Hipline ease
cm	6.9–7.9	2.5–3.1
inches	2 3/4–3 1/8	1–1 1/4

GARMENT LENGTH

Height, cm	Side seam length including waistband, cm	Finished hem width, cm
1 (154–160)	99.4–100.8	23.4–28.8
2 (162–168)	103.7–105	23.4–28.8
3 (170–176)	108–109.3	23.4–28.8
4 (178–184)	112.3–113.6	23.4–28.8
Height, ft	Side seam length including waistband, in	Finished hem width, in
1 (5'1"–5'3")	39 1/8–39 5/8	9 1/4–11 3/8
2 (5'4"–5'6")	40 7/8–41 3/8	9 1/4–11 3/8
3 (5'7"–5'9")	42 1/2–43	9 1/4–11 3/8
4 (5'10"–6'1")	44 1/4–44 3/4	9 1/4–11 3/8

SUGGESTED FABRICS

To sew these trousers, choose medium-weight, soft, non-stretch or low-stretch suiting fabrics. The fiber content can include natural, artificial, blended, and synthetic fibers. The following fabrics are recommended: wool suiting, linen, twill.

Attention! We do not recommend stretchy knit fabrics or lightweight sheer fabrics (chiffon, organza, stretch lace).

For the lining, choose lining fabrics made of artificial, blended, or synthetic fibers.

The trousers in the photo are made of suiting fabric. The fabric is medium weight, soft, and low-stretch. The fiber content is 100% wool. The fabric weight is 220 g/m².

The lining is made of 45% viscose + 55% polyester. The fabric weight is 100 g/m².

FABRIC AND NOTIONS REQUIREMENTS

1. Main fabric, 140 cm wide, with a directional print/nap, in meters:

Height, cm	Size						
	34	36	38	40	42	44-50	52
1 (154-160)	1.8	1.85	1.95	2	2.05	2.1	2.3
2 (162-168)	1.85	1.9	2	2.05	2.1	2.2	2.3
3 (170-176)	1.9	2	2.1	2.15	2.2	2.3	2.3
4 (178-184)	2	2.05	2.15	2.2	2.3	2.35	2.4

Main fabric, 55" wide, with a directional print/nap, in yards:

Height, ft	Size						
	34	36	38	40	42	44-50	52
1 (5'1"-5'3")	2	2	2 1/8	2 1/8	2 1/4	2 1/4	2 1/2
2 (5'4"-5'6")	2	2 1/8	2 1/8	2 1/4	2 1/4	2 3/8	2 1/2
3 (5'7"-5'9")	2 1/8	2 1/8	2 1/4	2 3/8	2 3/8	2 1/2	2 1/2
4 (5'10"-6'1")	2 1/8	2 1/4	2 3/8	2 3/8	2 1/2	2 5/8	2 5/8

2. Lining fabric, 140 cm (55") wide, with a directional print, for all sizes and heights — 0.4 m (15 3/4").

IMPORTANT! *When purchasing fabric, please account for shrinkage and buy 5% more than required.*

3. Lightweight interfacing, knit or woven, 140 cm (55") wide, for all sizes and heights — 20 cm (8").
4. Stitched bias-cut fusible stay tape with stitch reinforcement, 1.5 cm (5/8") wide — 1.55 m (1 3/4 yd).
5. One zipper, 20 cm (7 7/8") long, for all sizes and heights.
6. Two buttons, 2 cm (3/4") in diameter (one may be decorative).
7. Matching thread — 5 spools (1 spool for the sewing machine + 4 spools for the overlocker).

TOOLS AND EQUIPMENT

- sewing machine for construction
- overlocker for finishing raw edges This may be replaced with a stretch overlock stitch or a zigzag
- stitch on the sewing machine (overlock or zigzag stitch width 2–3 mm, stitch length 2.5 mm)
- buttonhole foot for the sewing machine
- one-sided foot for the sewing machine for attaching the zipper

PATTERN PIECES LIST

1. From main fabric:

- right front leg – cut 1
- left front leg – cut 1
- back leg – cut 2
- top right front waistband – cut 1
- bottom right front waistband – cut 1
- left front waistband – cut 2
- back waistband – cut 2
- pocket facing – cut 2
- fly shield – cut 1

2. From lining fabric:

- right pocket lining – cut 2
- left pocket lining – cut 2

***IMPORTANT!** Don't forget to transfer all pattern markings and notches onto the fabric.*

3. From interfacing:

- top right front waistband – cut 1
- bottom right front waistband – cut 1
- left front waistband – cut 2
- back waistband – cut 2
- fly shield– cut 1

***IMPORTANT!** The pattern pieces that have the "face" inscription on them should be placed with the blank side onto the right side of fabric when cutting.*

SEAM ALLOWANCES

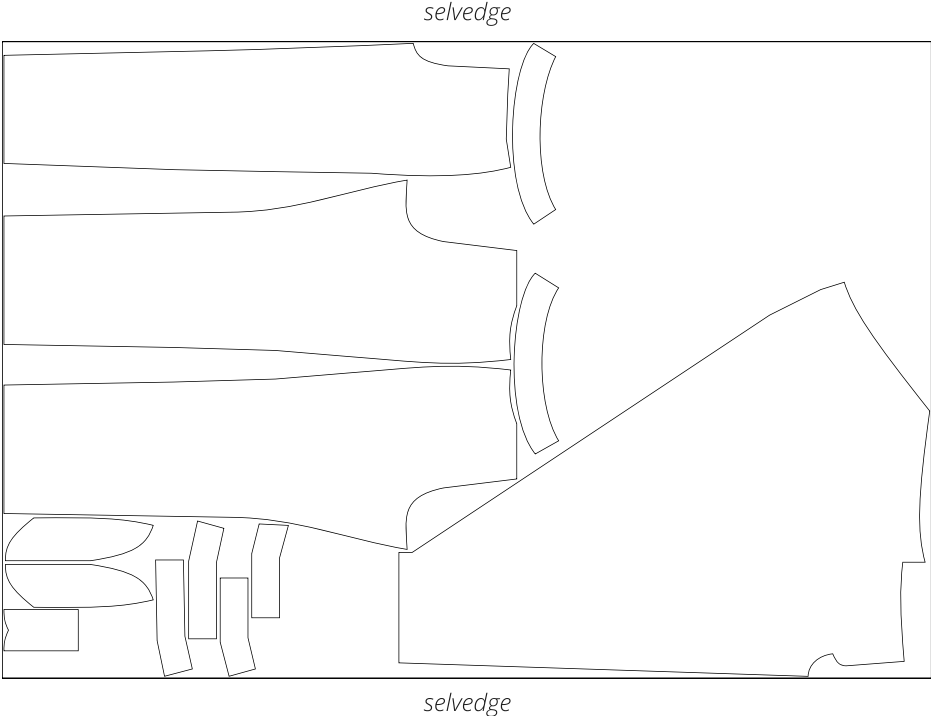
All pattern pieces include seam allowances as follows:

- garment hem allowance — 3 cm (1 1/8")
- pocket lining curved edges — 1.5 cm (5/8")
- all other edges — 1 cm (3/8")

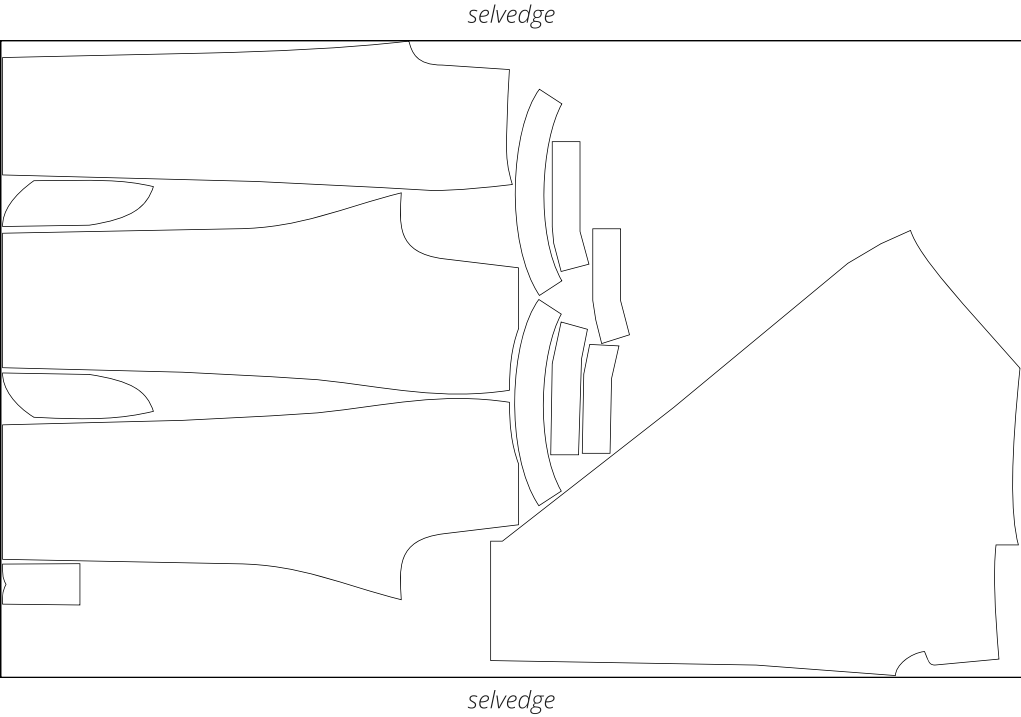
Take this into account when laying out the pattern pieces on the fabric.

CUTTING LAYOUT

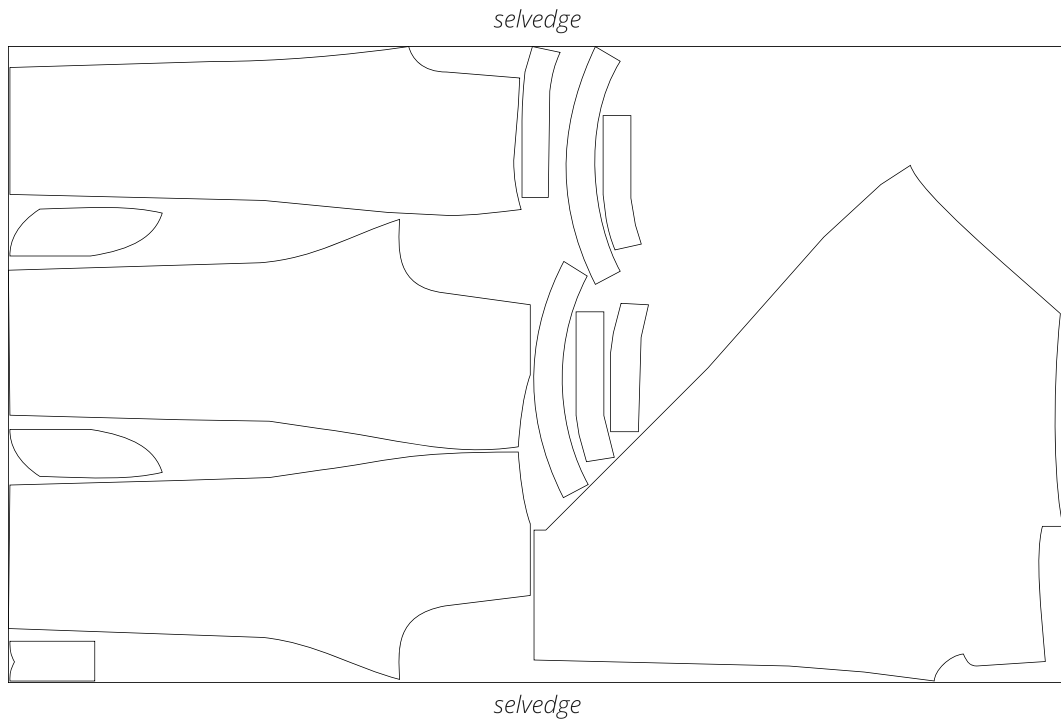
Main fabric, 140 cm (55") wide, with a directional print/nap, cut on a single layer, for sizes 34–36 in all heights



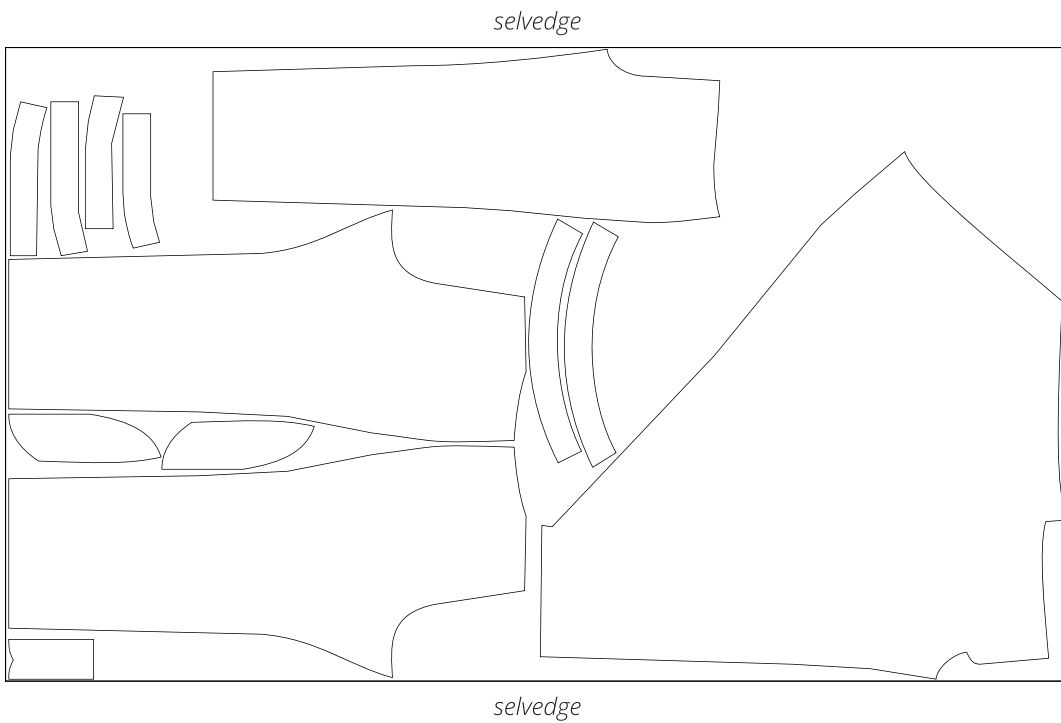
Main fabric, 140 cm (55") wide, with a directional print/nap, cut on a single layer, for sizes 38–42 in all heights



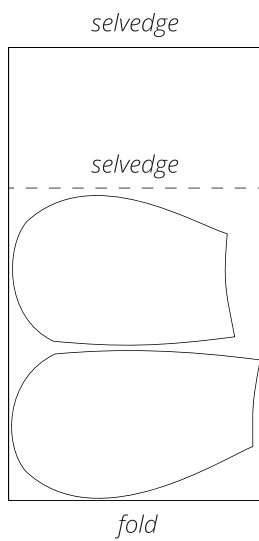
Main fabric, 140 cm (55") wide, with a directional print/nap,
cut on a single layer, for sizes 44-50 in all heights



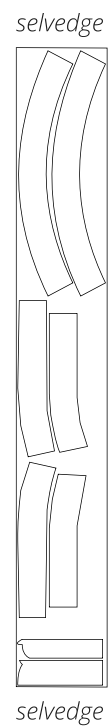
Main fabric, 140 cm (55") wide, with a directional print/nap,
cut on a single layer, for size 52 in all heights



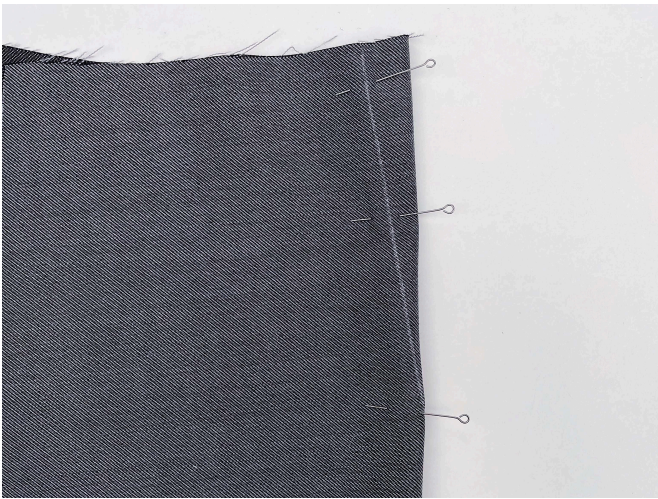
Lining fabric, 140 cm (55") wide,
cut on a partial fold, for all sizes
in all heights



Interfacing, 140 cm (55") wide,
cut on a single layer, for all sizes
in all heights



READY? LET'S GET SEWING!



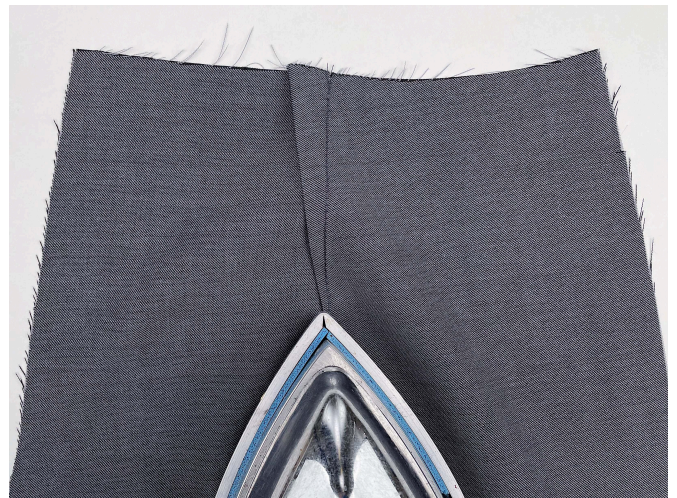
1. Working from the wrong side of the back leg piece, align and pin the dart legs. Machine-stitch, backstitching at the raw edge only. Leave long thread tails at the tip of each dart.



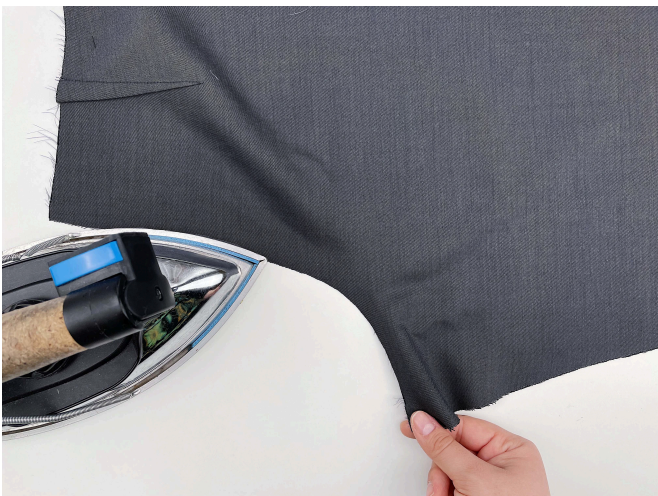
2. Tie the thread tails into a knot and hide them inside the dart bulk using a needle. Press the dart flat.



3. Press the dart towards the center back edge.



4. Shrink out the fullness at the tip of the dart by pressing.



5. Place the back leg pieces right sides together, align the center back and inseam edges. Stretch the center back edge slightly from the crotch point to the inseam.