

FROM THE FOUNDER OF THE VIKISEWS® BRAND

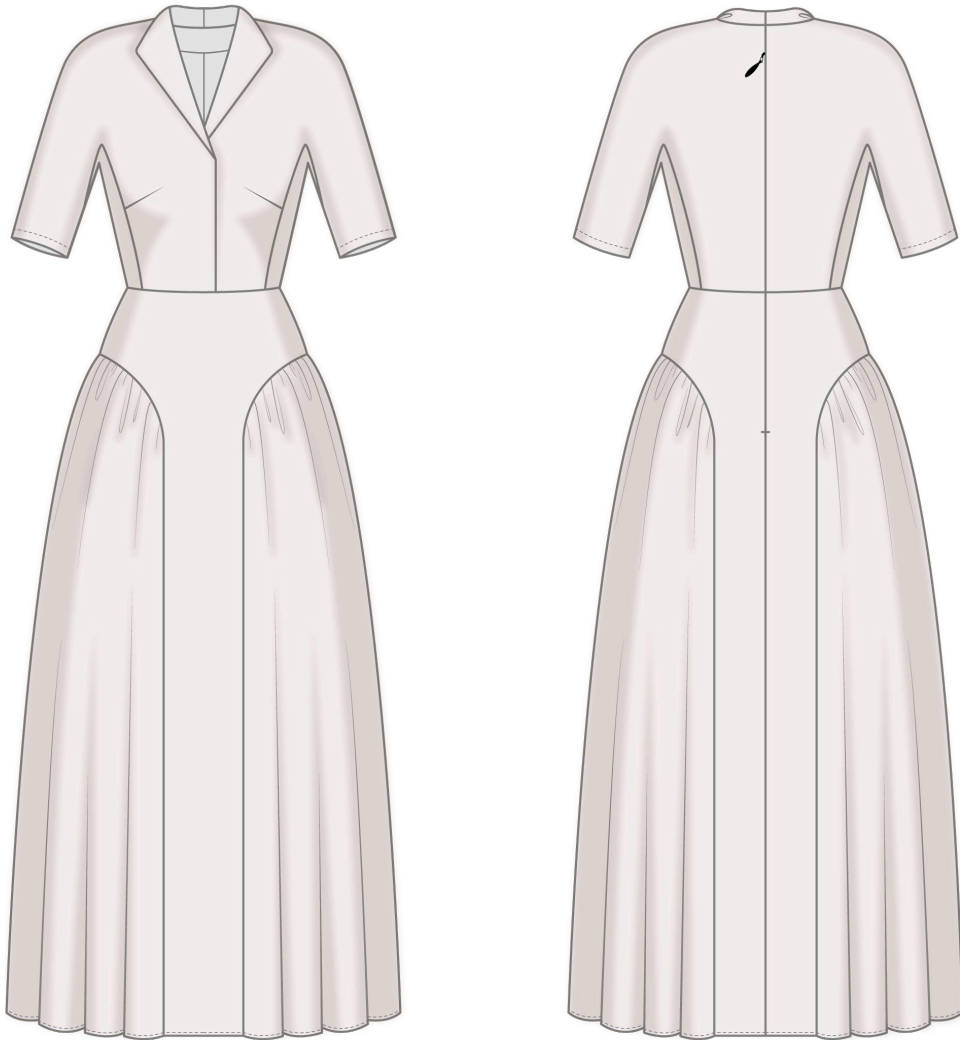


Back in 2016, when I started making my first sewing patterns and instruction manuals, my main goal was to solve the problems I personally faced at the beginning of my sewing journey: the lack of stylish patterns that provide a great fit and contain clear sewing instructions. That's how Vikisews was born—a brand designed to help you create fashionable, on-trend clothing with your own hands.



The sewing instructions we create is the result of our team's careful, meticulous work. May they help you develop your sewing hobby—or even turn it into your life's work! Enjoy every step of the sewing process and create a thoughtful, stylish wardrobe!

If you have any questions, we're always here to help: info@vikisews.com



ALLA PATTERN DESCRIPTION

Alla is a semi-fitted dress with an accentuated waist. The bodice has applied side pieces transitioning into sleeve gussets. There are bust darts starting at the princess seams. The grown-on sleeves with gussets are short. The front has a faux placket closure transitioning into a wing collar and a waist seam. The skirt is flared towards the bottom. The flaring of the skirt is achieved with additional pieces gathered at the top and inserted into the side seams of the dress. The dress closes with an invisible zipper in the center back seam. Alla is above-ankle length.



PLEASE READ BEFORE USE

The contents of this pattern are copyright protected and belong exclusively to Vikisews. You may use Vikisews patterns for personal use. It is prohibited to share Vikisews patterns and instructions with third parties, as well as to publish patterns and instructions online for public access. **Non-compliance with the mentioned rules is a violation of the US copyright law and may result in civil liability and criminal prosecution.**

You may use Vikisews patterns for commercial use, to sew custom-made garments and/or create fashion collections, on the condition that the patterns are solely used in a manufacturing setting and are not further shared with individuals.

TOTAL EASE ALLOWANCE

	Bust ease	Waistline ease	Hipline ease	Upper arm ease
cm	3.6–0.6	0.7–1.6	46.7–60.6	8.6–4.8
inches	1 3/8–1/4	1/4–5/8	18 3/8–23 7/8	3 3/8–1 7/8

GARMENT LENGTH, SLEEVE LENGTH

Height, cm	Back length from waist down, cm	Sleeve length including shoulder width, cm
1 (154–160)	84	39.9 – 42.2
2 (162–168)	87	41.3 – 43.6
3 (170–176)	90	42.5 – 44.8
4 (178–184)	93	43.7 – 46.1

Height, ft	Back length from waist down, in	Sleeve length including shoulder width, in
1 (5'1"–5'3")	33 1/8	15 3/4–16 5/8
2 (5'4"–5'6")	34 1/4	16 1/4–17 1/8
3 (5'7"–5'9")	35 3/8	16 3/4–17 5/8
4 (5'10"–6'1")	36 5/8	17 1/4–18 1/8

SUGGESTED FABRICS

To sew this dress, choose medium weight, soft, non-stretch or low-stretch, opaque dress-weight fabrics made of natural, artificial, blended, or synthetic fibers.

The following fabrics are recommended: satin, dress-weight viscose, modal, cupro, natural or artificial silk.

Fabrics with a blended fiber content are preferable, as they are less prone to wrinkling, generally more resistant to wear and tear, and more durable.

Attention! We do not recommend stretchy knit fabrics.

The dress in the photo is made of dress-weight fabric. The fabric is medium weight, soft, and non-stretch. The fiber content is 55% polyester + 45% rayon. The fabric weight is 150 g/m².

FABRIC AND NOTIONS REQUIREMENTS

1. Main fabric, 140 cm wide, with a directional print/nap, in meters:

Height, cm	Size								
	34-36	38	40	42	44	46	48	50	52
1 (154-160)	2.5	2.5	2.55	2.9	2.95	3.05	3.2	3.25	3.45
2 (162-168)	2.55	2.55	2.6	2.95	3.1	3.15	3.3	3.4	3.55
3 (170-176)	2.65	2.7	2.75	3.15	3.2	3.2	3.45	3.55	3.65
4 (178-184)	2.75	2.85	2.9	3.2	3.25	3.3	3.6	3.7	3.75

Main fabric, 55" wide, with a directional print/nap, in yards:

Height, ft	Size								
	34-36	38	40	42	44	46	48	50	52
1 (5'1"-5'3")	2 3/4	2 3/4	2 3/4	3 1/8	3 1/4	3 3/8	3 1/2	3 1/2	3 3/4
2 (5'4"-5'6")	2 3/4	2 3/4	2 7/8	3 1/4	3 3/8	3 1/2	3 5/8	3 3/4	3 7/8
3 (5'7"-5'9")	2 7/8	3	3	3 1/2	3 1/2	3 1/2	3 3/4	3 7/8	4
4 (5'10"-6'1")	3	3 1/8	3 1/8	3 1/2	3 1/2	3 5/8	3 7/8	4	4 1/8

2. Lightweight interfacing, knit or woven, 140 cm wide, in meters:

Height, cm	Size					
	34-36	38	40-42	44-46	48-50	52
1 (154-160)	0.55	0.55	0.55	0.55	0.6	0.6
2 (162-168)	0.55	0.55	0.55	0.6	0.6	0.6
3 (170-176)	0.55	0.55	0.6	0.6	0.6	0.6
4 (178-184)	0.55	0.6	0.6	0.6	0.6	0.65

Lightweight interfacing, knit or woven, 55" wide, in yards:

Height, ft	Size	
	34-50	52
1 (5'1"-5'3")	5/8	5/8
2 (5'4"-5'6")	5/8	5/8
3 (5'7"-5'9")	5/8	5/8
4 (5'10"-6'1")	5/8	3/4

***IMPORTANT!** When purchasing fabric, please account for shrinkage and buy 5% more than required.*

3. Bias-cut fusible stay tape with stitch reinforcement, 1.5 cm (5/8") wide — 1.05–1.15 m (1 1/8–1 1/4 yd).
4. One invisible zipper, 50–55 cm (20–22") long.
5. Matching thread — 5 spools (1 spool for the sewing machine + 4 spools for the overlocker).

TOOLS AND EQUIPMENT

- sewing machine for construction
- overlocker for finishing raw edges. This may be replaced with a stretch overlock stitch or a zigzag stitch on the sewing machine (overlock or zigzag stitch width 2–3 mm, stitch length 2.5 mm)
- stitch-in-the-ditch foot for the sewing machine (optional)
- invisible zipper foot for the sewing machine
- one-sided foot for the sewing machine

PATTERN PIECES LIST

1. From main fabric:

- front — cut 2
- back — cut 2
- side — cut 2
- center front skirt — cut 1 on fold
- center back skirt — cut 2
- side skirt — cut 2
- front facing — cut 2
- back neck facing — cut 1

2. From interfacing:

- back neck facing — cut 1
- front facing — cut 2

Additionally, cut the following from interfacing:

- four triangles to interface the corners of the grown-on sleeve
- two triangles to interface the corners of the grown-on collar

***IMPORTANT!** Don't forget to transfer all pattern markings and notches onto the fabric.*

SEAM ALLOWANCES

All pattern pieces include seam allowances as follows:

- garment hem allowance — 1.5 cm
- sleeve hems allowance — 1.5 cm
- all other edges — 1 cm.

Please take this into account when laying out the pieces on the fabric.

CUTTING LAYOUT

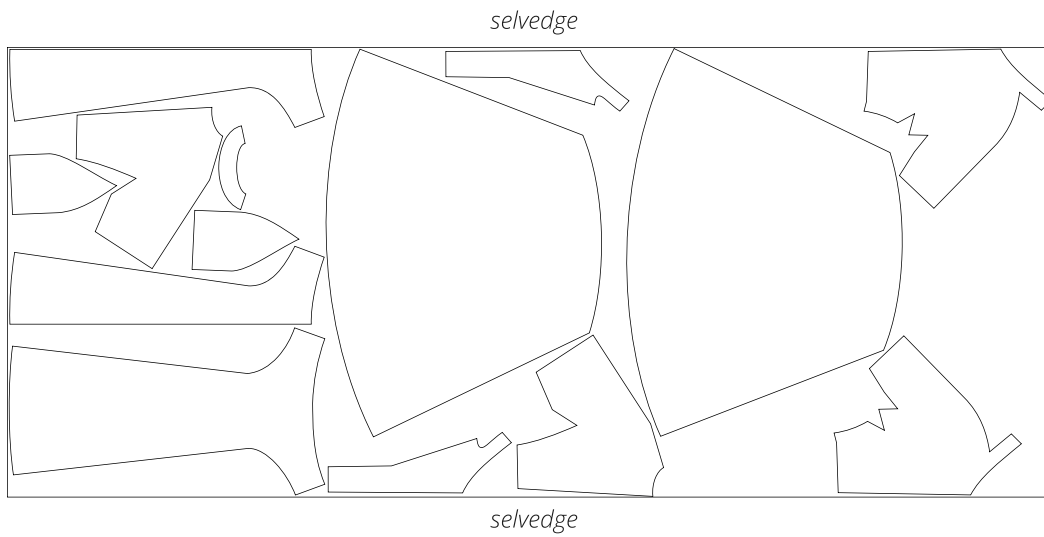
Main fabric, 140 cm (55") wide, with a directional print/nap, cut on a single layer,
for sizes 34–36 in all heights



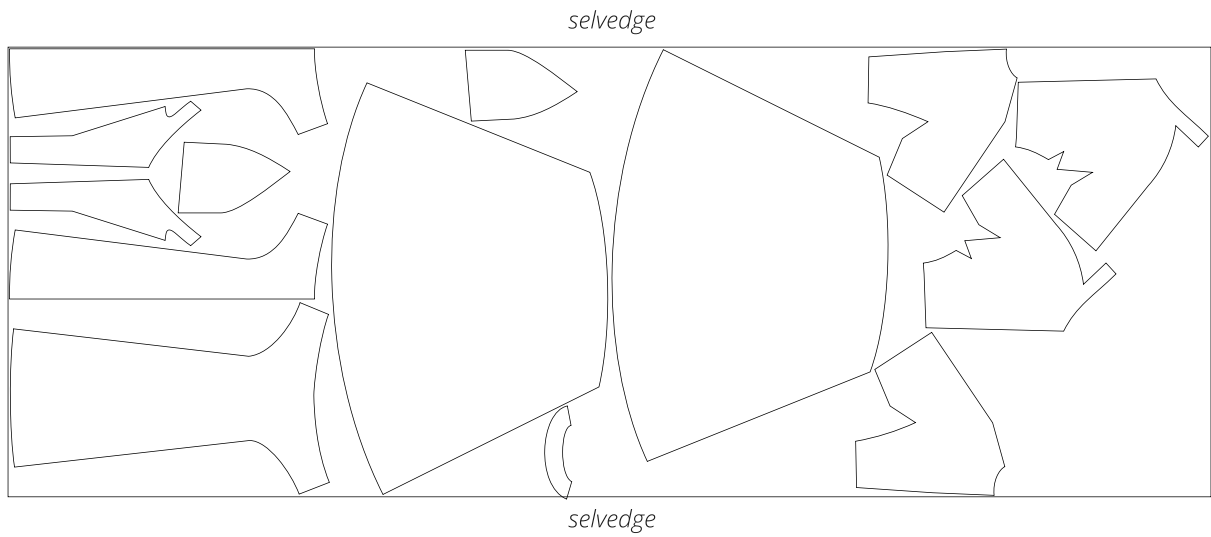
Main fabric, 140 cm (55") wide, with a directional print/nap, cut on a single layer,
for sizes 38–40 in all heights



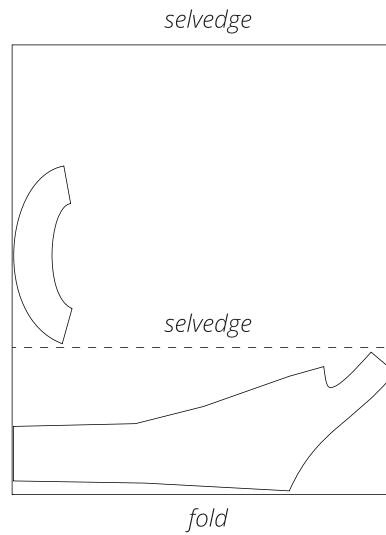
Main fabric, 140 cm (55") wide, with a directional print/nap, cut on a single layer,
for sizes 42–46 in all heights



Main fabric, 140 cm (55") wide, with a directional print/nap, cut on a single layer,
for sizes 48–52 in all heights



Interfacing, 140 cm (55") wide, cut on a partial
fold, for all sizes in all heights



READY? LET'S GET SEWING!



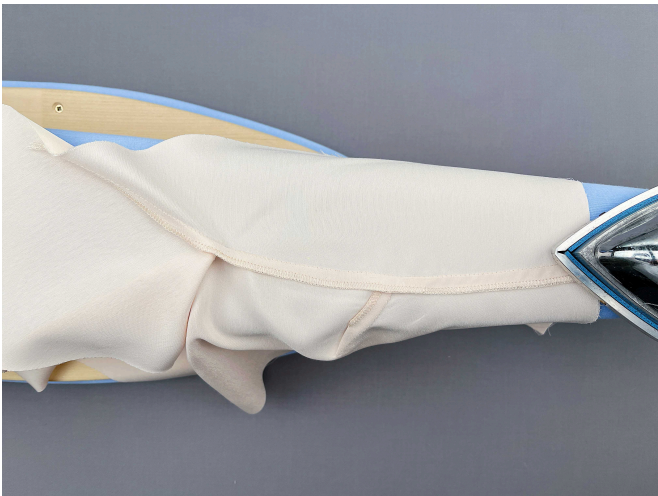
11. Place the front piece and side piece right sides together. Align the princess seam edges, match the notches. At the upper part of the princess seam on the front piece (corner of the grown-on sleeve), lay the seam allowance flat into a straight line and match the seam lines of the side piece. Pin.



12. Machine-stitch, backstitching at the beginning and end of the seam, straightening the princess seam edge of the front piece into a straight line.



13. Use a 4-thread overlocker to overlock the princess seam allowances with the side piece facing up. Press the seam.



14. Press the princess seam allowances towards the front piece.