

# FROM THE FOUNDER OF THE VIKISEWS® BRAND

---

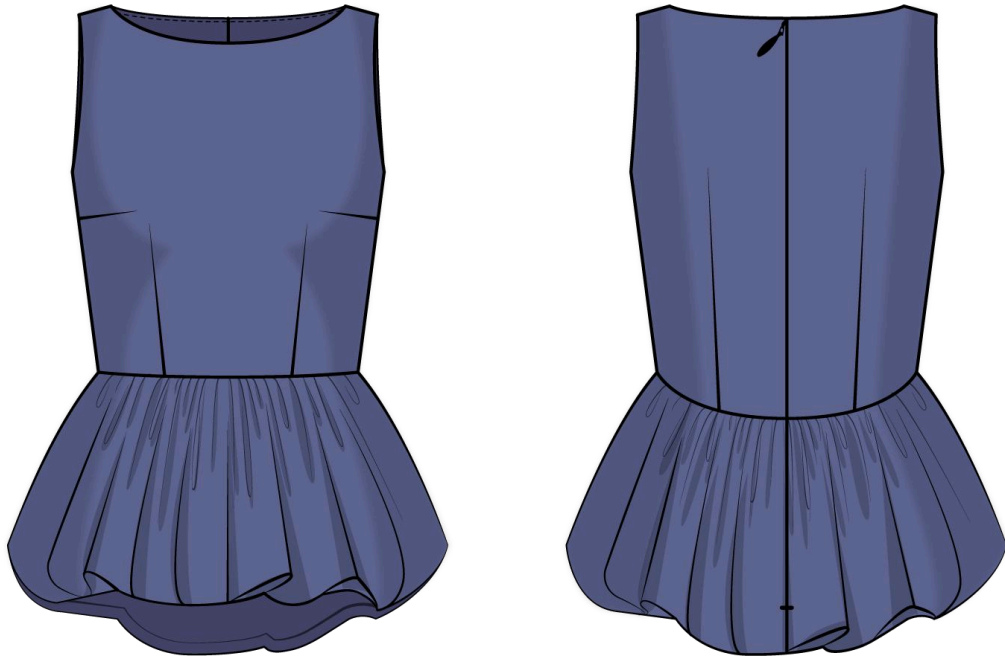


Back in 2016, when I started making my first sewing patterns and instruction manuals, my main goal was to solve the problems I personally faced at the beginning of my sewing journey: the lack of stylish patterns that provide a great fit and contain clear sewing instructions. That's how Vikisews was born—a brand designed to help you create fashionable, on-trend clothing with your own hands.



The sewing instructions we create is the result of our team's careful, meticulous work. May they help you develop your sewing hobby—or even turn it into your life's work! Enjoy every step of the sewing process and create a thoughtful, stylish wardrobe!

If you have any questions, we're always here to help: [info@vikisews.com](mailto:info@vikisews.com)



## ALIKA PATTERN DESCRIPTION

---

Alika is a semi-fitted, fully lined top with a voluminous peplum and an accentuated waist. The top has a waist seam that sits below the natural waistline. The front and back are fitted with bust and waist darts. The peplum flares down and is gathered at the top and bottom for the balloon style silhouette. The top has a boatneck and closes with an invisible zipper in the center back seam. Alika is hip-length.



## PLEASE READ BEFORE USE

---

The contents of this pattern are copyright protected and belong exclusively to Vikisews. You may use Vikisews patterns for personal use. It is prohibited to share Vikisews patterns and instructions with third parties, as well as to publish patterns and instructions online for public access. **Non-compliance with the mentioned rules is a violation of the US copyright law and may result in civil liability and criminal prosecution.**

You may use Vikisews patterns for commercial use, to sew custom-made garments and/or create fashion collections, on the condition that the patterns are solely used in a manufacturing setting and are not further shared with individuals.

# TOTAL EASE ALLOWANCE

---

	Bust ease	Waistline ease	Hipline ease
cm	7.3–3.5	17.1–11.2	7.9–5.6
inches	2 7/8–1 3/8	6 3/4–4 3/8	3 1/8–2 1/4

# GARMENT LENGTH, SLEEVE LENGTH

---

Height, cm	Back length, cm	Height, ft	Back length, in
1 (154–160)	62.3–64.1	1 (5'1"–5'3")	24 1/2–25 1/4
2 (162–168)	65.3–67.1	2 (5'4"–5'6")	25 3/4–26 3/8
3 (170–176)	68.3–70.1	3 (5'7"–5'9")	26 7/8–27 5/8
4 (178–184)	71.3–73.1	4 (5'10"–6'1")	28 1/8–28 3/4

# SUGGESTED FABRICS

---

To sew this top, choose medium-weight, pliable, structured, non-stretch or low-stretch, opaque shirting fabrics made of natural, artificial, blended, or synthetic fibers.

The following fabrics are recommended: cotton, batiste, poplin, dress-weight denim, ramie, linen.

**Attention!** We do not recommend stretchy knit fabrics, as well as thin and sheer fabrics (chiffon, organza, stretch lace). Fabrics with a directional print or nap are also not recommended.

The top in the photo is made of shirting cotton. The fabric is medium weight, pliable, soft, and structured. The fiber content is 100% cotton. The fabric weight is 140 g/m<sup>2</sup>. The lining of the top is made of the main fabric.

# FABRIC AND NOTIONS REQUIREMENTS

1. Main fabric, 140 cm wide, with a directional print/nap, in meters:

Height, cm	Size							
	34	36	38	40	42	44-46	48-50	52
1 (154-160)	1.45	1.55	1.6	1.7	1.8	1.85	1.9	1.9
2 (162-168)	1.5	1.65	1.7	1.8	1.9	1.95	1.95	2
3 (170-176)	1.6	1.8	1.8	1.95	2	2	2.05	2.05
4 (178-184)	1.65	1.9	1.9	2.05	2.05	2.1	2.15	2.15

Main fabric, 55" wide, with a directional print/nap, in yards:

Height, ft	Size							
	34	36	38	40	42	44-46	48-50	52
1 (5'1"-5'3")	1 5/8	1 3/4	1 3/4	1 7/8	2	2	2 1/8	2 1/8
2 (5'4"-5'6")	1 5/8	1 3/4	1 7/8	2	2 1/8	2 1/8	2 1/8	2 1/8
3 (5'7"-5'9")	1 3/4	2	2	2 1/8	2 1/8	2 1/8	2 1/4	2 1/4
4 (5'10"-6'1")	1 3/4	2 1/8	2 1/8	2 1/4	2 1/4	2 1/4	2 3/8	2 3/8

**IMPORTANT!** When purchasing fabric, please account for shrinkage and buy 5% more than required.

2. Stitched bias-cut fusible stay tape with stitch reinforcement, 1.5 cm (5/8") wide — 1.2 m (1 1/4 yd)
3. One invisible zipper, 50-60 cm (19-24") long, for all sizes and heights
4. One hook-and-eye closure, size S1
5. Matching thread — 1 spool for the sewing machine

## TOOLS AND EQUIPMENT

- sewing machine for construction
- stitch-in-the-ditch foot for the sewing machine (optional)
- invisible zipper foot for the sewing machine
- one-sided foot for the sewing machine

# PATTERN PIECES LIST

---

From main fabric:

- top front — cut 2 on fold
- top back — cut 4
- bottom front — cut 1 on fold
- bottom back — cut 2
- bottom front lining — cut 1 on fold
- bottom back lining — cut 2

*IMPORTANT! Don't forget to transfer all pattern markings and notches onto the fabric.*

# SEAM ALLOWANCES

---

All pattern pieces include seam allowances as follows:

- center seam allowances on the top and bottom back pieces — 1.5 cm (5/8")
- all other edges — 1 cm (3/8")

Take this into account when laying out the pattern pieces on the fabric.

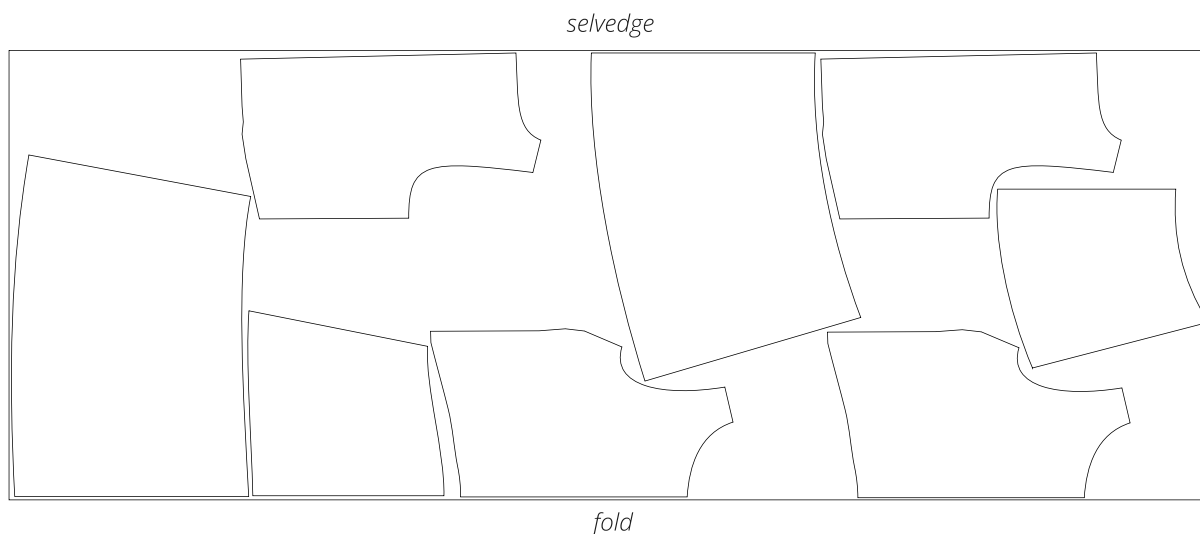
# CUTTING LAYOUT

---

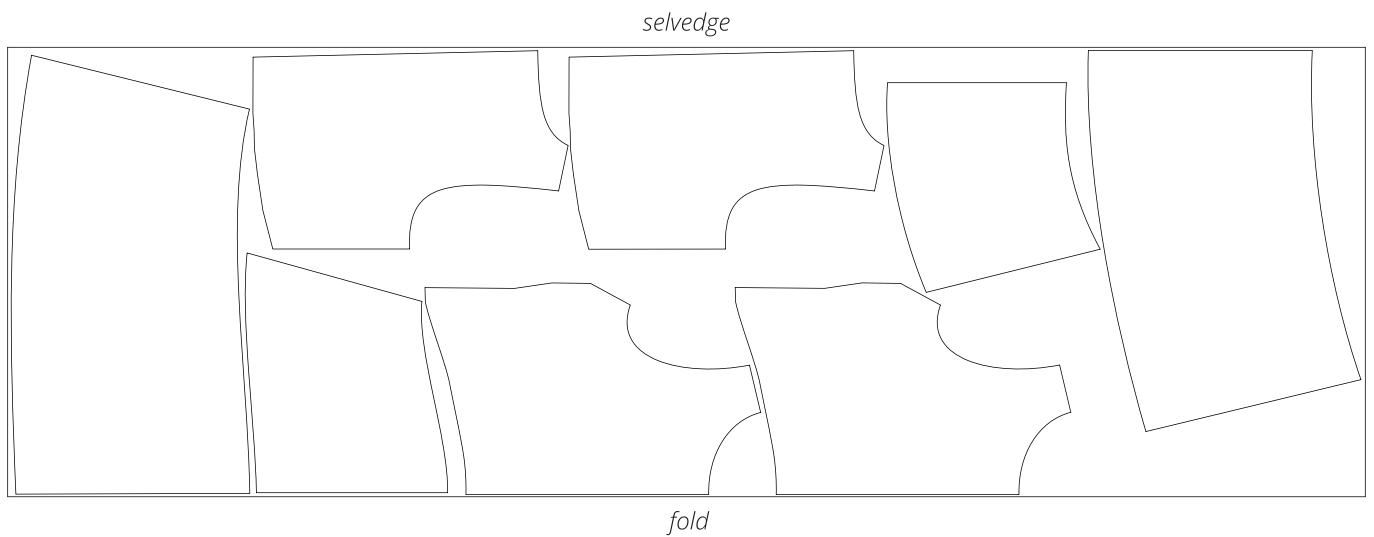
Main fabric, 140 cm (55") wide, with a directional print/nap,  
cut on fold, for size 34 in all heights



Main fabric, 140 cm (55") wide, with a directional print/nap,  
cut on fold, for sizes 36–40 in heights 1 and 2, for sizes 36–38 in heights 3 and 4



Main fabric, 140 cm (55") wide, with a directional print/nap,  
cut on fold, for sizes 42–52 in heights 1 and 2, for sizes 40–52 in heights 3 and 4



**READY? LET'S GET SEWING!**

---



1. Using tailor's chalk, transfer the dart legs from the pattern to the wrong side of the top front and top back pieces.



2. Align the dart legs on the wrong side of the top front and top back pieces and pin.



3. Machine-stitch, backstitching at the beginning of the seam. Leave long thread tails at the dart point. Tie thread tails into knots. Trim the excess thread length.



4. Press the waist darts on the top front piece towards the center. Press the bust darts upwards on a corset ham.