

FROM THE FOUNDER OF THE VIKISEWS® BRAND



Back in 2016, when I started making my first sewing patterns and instruction manuals, my main goal was to solve the problems I personally faced at the beginning of my sewing journey: the lack of stylish patterns that provide a great fit and contain clear sewing instructions. That's how Vikisews was born—a brand designed to help you create fashionable, on-trend clothing with your own hands.



The sewing instructions we create is the result of our team's careful, meticulous work. May they help you develop your sewing hobby—or even turn it into your life's work! Enjoy every step of the sewing process and create a thoughtful, stylish wardrobe!

If you have any questions, we're always here to help: info@vikisews.com



HENRIETTA PATTERN DESCRIPTION

Henrietta is a dress with a close-fitting bodice, a voluminous skirt, and an accentuated waist. The bodice is shaped with front and back princess seams. The back is open. The dress features a waist seam that is shaped at the front. The side seams and back princess seams are stiffened with rigilene boning. The skirt flares down and is gathered at the top and bottom for the balloon style silhouette. The front neckline is finished with a stand collar transitioning into long ties. The dress is fully lined and fastens with an invisible zipper in the center back seam. Henrietta is above-knee length.



PLEASE READ BEFORE USE

The contents of this pattern are copyright protected and belong exclusively to Vikisews. You may use Vikisews patterns for personal use. It is prohibited to share Vikisews patterns and instructions with third parties, as well as to publish patterns and instructions online for public access. **Non-compliance with the mentioned rules is a violation of the US copyright law and may result in civil liability and criminal prosecution.**

You may use Vikisews patterns for commercial use, to sew custom-made garments and/or create fashion collections, on the condition that the patterns are solely used in a manufacturing setting and are not further shared with individuals.

TOTAL EASE ALLOWANCE

	Bust ease	Waistline ease	Hipline ease
cm	0–1	1.4–1.3	2.4–2.3
inches	0–3/8	1/2	1–7/8

GARMENT LENGTH

Height, cm	Back length from waist down (estimated), cm	Height, ft	Back length from waist down (estimated), in
1 (154–160)	38.9–39.8	1 (5'1"–5'3")	15 3/8–15 5/8
2 (162–168)	40.9–41.8	2 (5'4"–5'6")	16 1/8–16 1/2
3 (170–176)	42.9–43.8	3 (5'7"–5'9")	16 7/8–17 1/4
4 (178–184)	44.9–45.8	4 (5'10"–6'1")	17 5/8–18

SUGGESTED FABRICS

To sew this dress, choose medium-weight, pliable, structured, low-stretch, opaque suiting and dress-weight fabrics made of natural, artificial, blended, or synthetic fibers.

The following fabrics are recommended: cotton suiting, gabardine, brocade.

For reinforcing the skirt of the dress, use stiff mesh or stiff tulle.

Attention! We do not recommend stretchy knit fabrics or thin, sheer fabrics (chiffon, organza, stretch lace). Fabrics with a directional print or nap are also not recommended.

The dress in the photo is made of cotton suiting with a satin weave. The fabric is medium weight, pliable, soft, and structured. The fiber content is 95% cotton + 5% elastane. The fabric weight is 210 g/m².

The lining of the dress is made of the main fabric.

The skirt of the dress is reinforced with stiff tulle (mesh), 40–50 g/m², that matches the main fabric color.

FABRIC AND NOTIONS REQUIREMENTS

1. Main fabric, 140 cm wide, with a directional print/nap, in meters:

Height, cm	Size									
	34	36	38	40	42	44	46	48	50	52
1 (154–160)	2	2	2.1	2.3	2.3	2.5	2.6	2.8	2.8	2.9
2 (162–168)	2.1	2.2	2.3	2.4	2.5	2.6	2.6	2.8	2.9	3
3 (170–176)	2.2	2.3	2.3	2.5	2.5	2.7	2.8	2.9	3	3.1
4 (178–184)	2.3	2.3	2.4	2.6	2.7	2.8	2.9	3.1	3.2	3.3

Main fabric, 55" wide, with a directional print/nap, in yards:

Height, ft	Size									
	34	36	38	40	42	44	46	48	50	52
1 (5'1"–5'3")	2 1/8	2 1/8	2 1/4	2 1/2	2 1/2	2 3/4	2 7/8	3	3	3 1/8
2 (5'4"–5'6")	2 1/4	2 3/8	2 1/2	2 5/8	2 3/4	2 7/8	2 7/8	3	3 1/8	3 1/4
3 (5'7"–5'9")	2 3/8	2 1/2	2 1/2	2 3/4	2 3/4	3	3	3 1/8	3 1/4	3 3/8
4 (5'10"–6'1")	2 1/2	2 1/2	2 5/8	2 7/8	3	3	3 1/8	3 3/8	3 1/2	3 5/8

2. Additional fabric (mesh), 140 cm wide, cut in one direction, in meters:

Height, cm	Size									
	34	36	38	40	42	44	46	48	50	52
1 (154–160)	1.25	1.3	1.4	1.45	1.55	1.6	1.7	1.8	1.9	1.95
2 (162–168)	1.25	1.35	1.4	1.5	1.55	1.65	1.7	1.8	1.9	2
3 (170–176)	1.3	1.35	1.4	1.5	1.6	1.65	1.75	1.85	1.9	2
4 (178–184)	1.3	1.35	1.45	1.5	1.6	1.7	1.75	1.85	1.95	2.1

Additional fabric (mesh), 55" wide, cut in one direction, in yards:

Height, ft	Size									
	34	36	38	40	42	44	46	48	50	52
1 (5'1"–5'3")	1 3/8	1 3/8	1 1/2	1 5/8	1 3/4	1 3/4	1 7/8	2	2 1/8	2 1/8
2 (5'4"–5'6")	1 3/8	1 1/2	1 1/2	1 5/8	1 3/4	1 3/4	1 7/8	2	2 1/8	2 1/8
3 (5'7"–5'9")	1 3/8	1 1/2	1 1/2	1 5/8	1 3/4	1 3/4	1 7/8	2	2 1/8	2 1/8
4 (5'10"–6'1")	1 3/8	1 1/2	1 5/8	1 5/8	1 3/4	1 7/8	1 7/8	2	2 1/8	2 1/4

***IMPORTANT!** When purchasing fabric, please account for shrinkage and buy 5% more than required.*

3. Stitched bias-cut fusible stay tape with stitch reinforcement, 1.5 cm (5/8") wide — 2.7–3 m (3–3 1/4 yd)
4. One invisible zipper, 40–45 cm (15 3/4–17 3/4") long, for all sizes and heights
5. Rigilene boning, 1 cm (3/8") wide — 1.3 m (1 3/8 yd)
6. One sew-on hook-and-eye closure, size S1
7. Matching thread — 1 spool for the sewing machine

TOOLS AND EQUIPMENT

- sewing machine for construction
- stitch-in-the-ditch foot for the sewing machine (optional)
- invisible zipper foot for the sewing machine
- one-sided foot for the sewing machine

PATTERN PIECES LIST

1. From main fabric:

- center front bodice — cut 2 on fold
- side front bodice — cut 4
- center back bodice — cut 4
- side back bodice — cut 4
- front skirt — cut 1 on fold
- back skirt — cut 2
- front skirt lining — cut 1 on fold
- back skirt lining — cut 2
- stand collar — cut 1

***IMPORTANT!** Don't forget to transfer all pattern markings and notches onto the fabric.*

2. From additional fabric (mesh):

- front skirt — cut 1 on fold
- back skirt — cut 2

SEAM ALLOWANCES

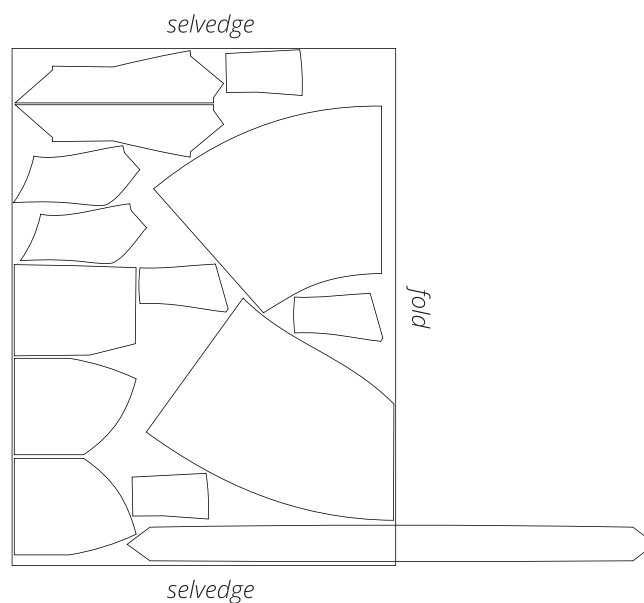
All pattern pieces include seam allowances as follows:

- center seam allowance on the center back bodice and back skirt pieces — 1.5 cm (5/8")
- all other edges — 1 cm (3/8")

Take this into account when laying out the pattern pieces on the fabric.

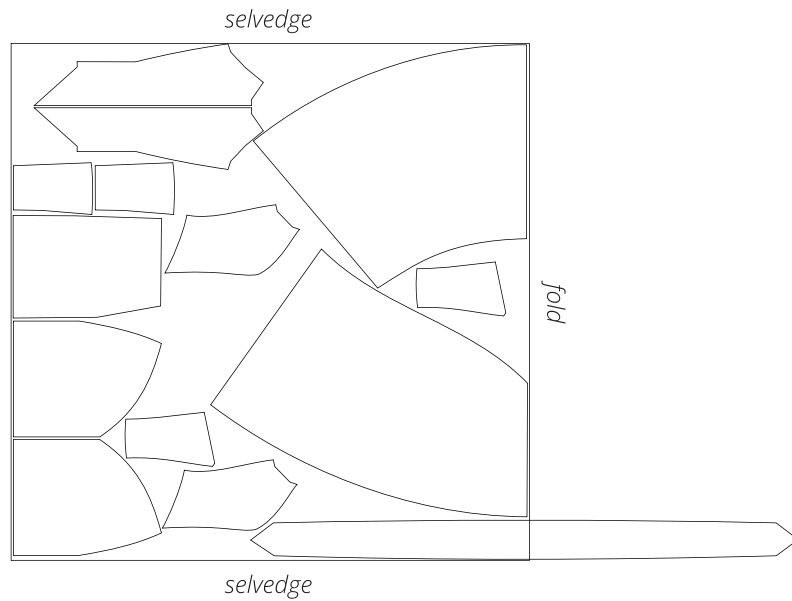
CUTTING LAYOUT

Main fabric, 140 cm (55") wide, with a directional print/nap, cut on fold, for sizes 34–38 in all heights



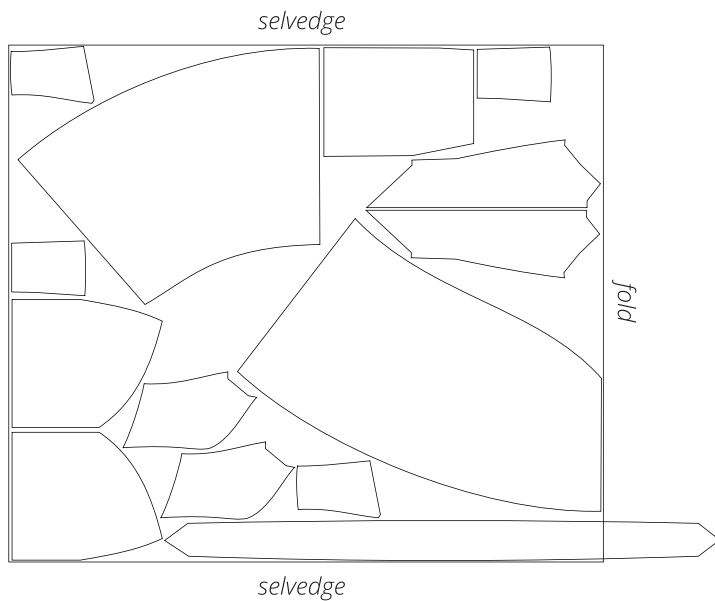
Attention! The stand collar piece is cut on a single layer out of the leftover fabric as a single piece. Cut only one front skirt lining piece.

Main fabric, 140 cm (55") wide, with a directional print/nap,
cut on fold, for sizes 40–46 in all heights



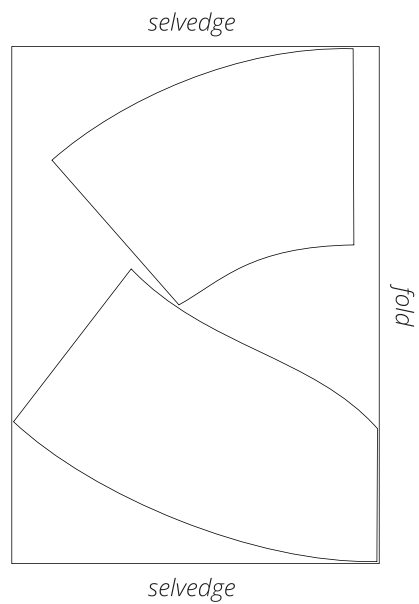
Attention! The stand collar piece is cut on a single layer out of the leftover fabric as a single piece. Cut only one front skirt lining piece.

Main fabric, 140 cm (55") wide, with a directional print/nap,
cut on fold, for sizes 48–52 in all heights



Attention! The stand collar piece is cut on a single layer out of the leftover fabric as a single piece. Cut only one front skirt lining piece.

Additional fabric (mesh), 140 cm wide,
cut on fold and in one direction,
for all sizes in all heights



READY? LET'S GET SEWING!



1. Place the center front bodice and side front bodice pieces right sides together. Align the princess seam edges, match the notches, and pin.



2. Place the center back bodice and side back bodice pieces right sides together. Align the princess seam edges, match the notches, and pin.



3. Machine-stitch, backstitching at the beginning and end of the seam.



4. Clip into the princess seam allowances on the front bodice piece from the waistline upwards at every 2–3 cm (3/4–1 1/8") stopping 2 mm short of the seam.



5. Press the princess seam allowances on the front bodice piece towards the center.