

# Viki

S E W S

## BLOUSE KAMALA



SIZES  
34-52

DIFFICULTY



INTERMEDIATE



# FROM THE FOUNDER OF THE VIKISEWS® BRAND

---

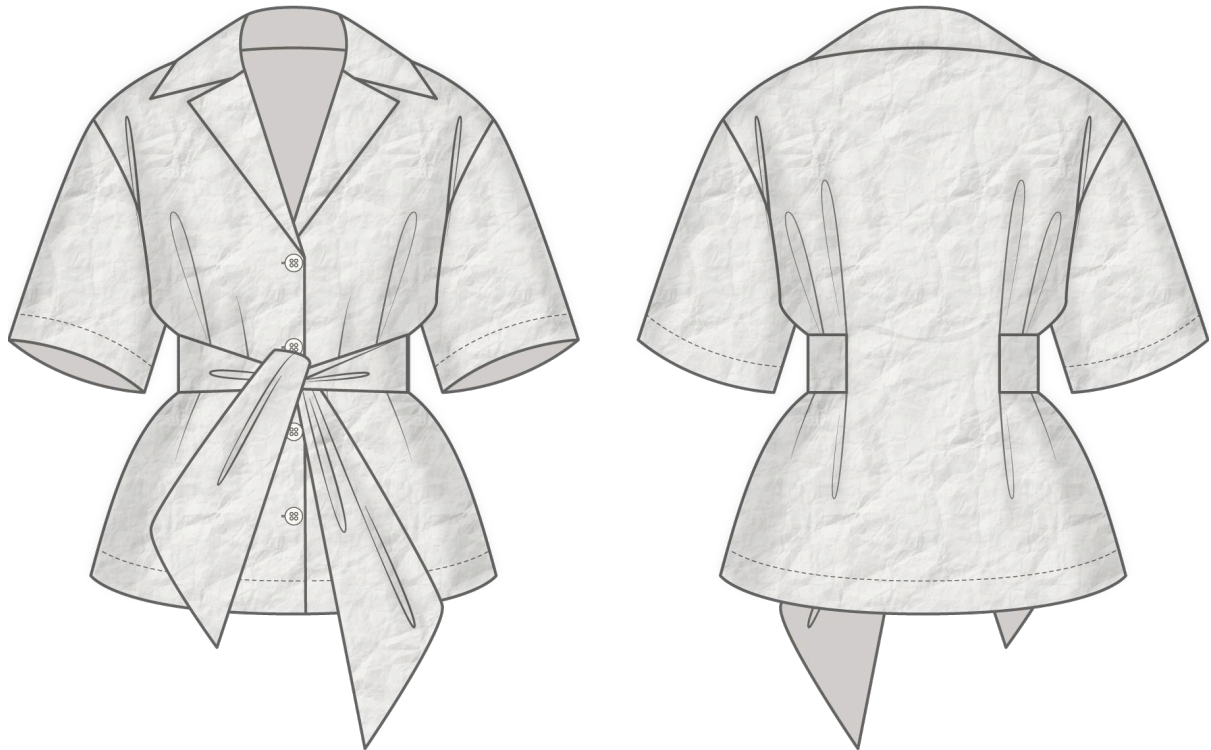


Back in 2016, when I started making my first sewing patterns and instruction manuals, my main goal was to solve the problems I personally faced at the beginning of my sewing journey: the lack of stylish patterns that provide a great fit and contain clear sewing instructions. That's how Vikisews was born—a brand designed to help you create fashionable, on-trend clothing with your own hands.



The sewing instructions we create is the result of our team's careful, meticulous work. May they help you develop your sewing hobby—or even turn it into your life's work! Enjoy every step of the sewing process and create a thoughtful, stylish wardrobe!

If you have any questions, we're always here to help: [info@vikisews.com](mailto:info@vikisews.com)



## KAMALA PATTERN DESCRIPTION

---

Kamala is a semi-fitted blouse with a straight cut. The back has stitched pleats securing the tie belt. The blouse features a notched turn-down collar, drop shoulders, and deep armholes. The set-in sleeves are short. The blouse fastens with buttons and buttonholes. Kamala is hip-length.



## PLEASE READ BEFORE USE

---

The contents of this pattern are copyright protected and belong exclusively to Vikisews. You may use Vikisews patterns for personal use. It is prohibited to share Vikisews patterns and instructions with third parties, as well as to publish patterns and instructions online for public access. **Non-compliance with the mentioned rules is a violation of the US copyright law and may result in civil liability and criminal prosecution.**

You may use Vikisews patterns for commercial use, to sew custom-made garments and/or create fashion collections, on the condition that the patterns are solely used in a manufacturing setting and are not further shared with individuals.

# TOTAL EASE ALLOWANCE

---

	Bust ease	Waistline ease	Hipline ease	Upper arm ease
cm	22.3–25.1	37.8–39.4	31.6–21.7	9.1–15.1
inches	8 3/4–9 7/8	14 7/8–15 1/2	12 1/2–8 1/2	3 5/8–6

# GARMENT LENGTH, SLEEVE LENGTH

---

Height, cm	Back length, cm	Sleeve length including shoulder width, cm
1 (154–160)	55–58.3	35.9–42.6
2 (162–168)	59–62.4	38.4–45.1
3 (170–176)	63–66.3	40.6–47.3
4 (178–184)	67–70.3	42.9–49.5

Height, ft	Back length, in	Sleeve length including shoulder width, in
1 (5'1"–5'3")	21 5/8–23	14 1/8–16 3/4
2 (5'4"–5'6")	23 1/4–24 5/8	15 1/8–17 3/4
3 (5'7"–5'9")	24 3/4–26 1/8	16–18 5/8
4 (5'10"–6'1")	26 3/8–27 5/8	16 7/8–19 1/2

# SUGGESTED FABRICS

---

To sew this blouse, choose medium-weight, structured, non-stretch, opaque fabrics.

The fiber content can include natural fibers (silk, cotton, linen), artificial fibers (viscose), blended fibers (cotton + viscose, linen + viscose, etc.), and synthetic fibers (polyester).

The following fabrics are recommended: textured cotton, shirting cotton, linen.

**Attention!** We do not recommend stretchy knit fabrics or lightweight sheer fabrics (chiffon, organza, stretch lace).

The blouse in the photo is made of cotton. The fabric is medium weight, non-stretch, and structured. The fiber content is blended: 50% cotton, 30% linen, 20% polyamide. The fabric weight is 140 g/m<sup>2</sup>.

# FABRIC AND NOTIONS REQUIREMENTS

1. Main fabric, 140 cm wide, with a directional print/nap, in meters:

Height, cm	Size									
	34	36	38	40	42	44	46	48	50	52
1 (154–160)	1.4	1.45	1.45	1.5	1.75	1.8	1.85	1.85	1.9	1.95
2 (162–168)	1.45	1.5	1.55	1.6	1.8	1.85	1.9	1.95	1.95	2
3 (170–176)	1.5	1.55	1.6	1.65	1.85	1.9	1.95	2	2.05	2.05
4 (178–184)	1.55	1.6	1.65	1.7	1.95	1.95	2	2.05	2.1	2.15

Main fabric, 55" wide, with a directional print/nap, in yards:

Height, ft	Size									
	34	36	38	40	42	44	46	48	50	52
1 (5'1"–5'3")	1 1/2	1 5/8	1 5/8	1 5/8	1 7/8	2	2	2	2 1/8	2 1/8
2 (5'4"–5'6")	1 5/8	1 5/8	1 3/4	1 3/4	2	2	2 1/8	2 1/8	2 1/8	2 1/8
3 (5'7"–5'9")	1 5/8	1 3/4	1 3/4	1 3/4	2	2 1/8	2 1/8	2 1/8	2 1/4	2 1/4
4 (5'10"–6'1")	1 3/4	1 3/4	1 3/4	1 7/8	2 1/8	2 1/8	2 1/8	2 1/4	2 1/4	2 3/8

2. Lightweight interfacing, knit or woven, 140 cm wide, in meters:

Height, cm	Size					
	34–36	38–40	42	44–48	50	52
1 (154–160)	0.7	0.7	0.7	0.7	0.75	0.75
2 (162–168)	0.7	0.75	0.75	0.75	0.75	0.8
3 (170–176)	0.75	0.75	0.8	0.8	0.8	0.8
4 (178–184)	0.8	0.8	0.8	0.85	0.85	0.85

Lightweight interfacing, knit or woven, 55" wide, in yards:

Height, ft	Size		
	34–36	38–48	50–52
1 (5'1"–5'3")	3/4	3/4	7/8
2 (5'4"–5'6")	3/4	7/8	7/8
3 (5'7"–5'9")	7/8	7/8	7/8
4 (5'10"–6'1")	7/8	7/8	7/8

***IMPORTANT!** When purchasing fabric, please account for shrinkage and buy 5% more than required.*

3. Bias-cut fusible stay tape with stitch reinforcement, 1 cm (3/8") wide — 1.94–2.51 m (2 1/8–2 3/4 yd) depending on the size
4. Four buttons, 1.5 cm (5/8") in diameter
5. Matching thread — 5 spools (1 spool for the sewing machine + 4 spools for the overlocker)

## TOOLS AND EQUIPMENT

---

- sewing machine for construction
- overlocker for stitching and finishing seam allowances. This may be replaced with a stretch overlock stitch or a zigzag stitch on the sewing machine (overlock or zigzag stitch width 2–3 mm, stitch length 2.5 mm)
- stitch-in-the-ditch foot for the sewing machine (optional)
- buttonhole foot for the sewing machine

## PATTERN PIECES LIST

---

### 1. From main fabric:

- front — cut 2
- back— cut 1 on fold
- sleeve — cut 2
- upper collar — cut 1
- undercollar — cut 1
- front facing — cut 2
- back neck facing — cut 1
- tie belt — cut 2

***IMPORTANT!** Don't forget to transfer all pattern markings and notches onto the fabric.*

### 2. From interfacing:

- front facing
- upper collar
- back neck facing

# SEAM ALLOWANCES

---

All pattern pieces include seam allowances as follows:

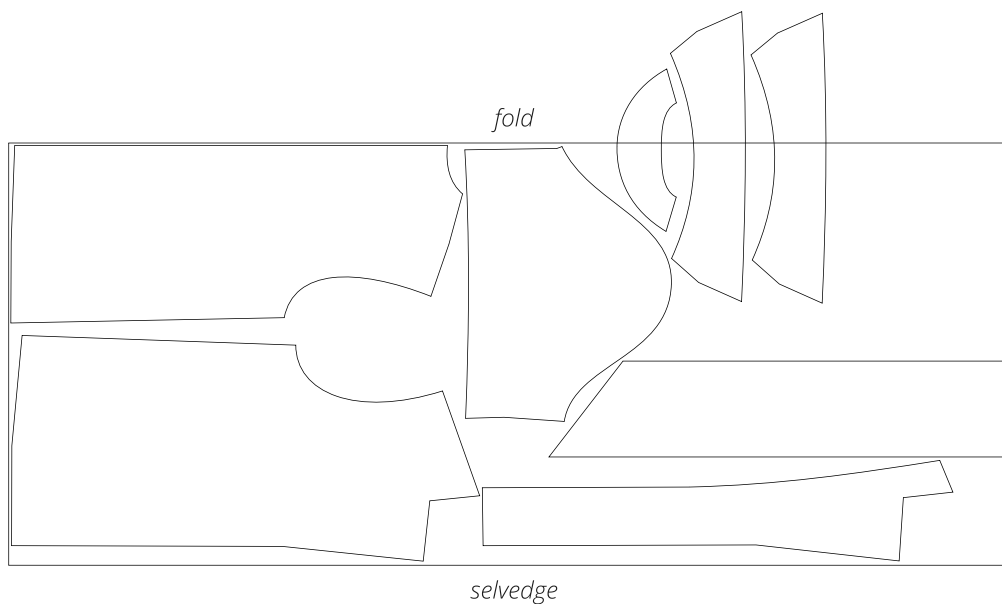
- garment hem allowance — 4 cm (1 5/8")
- sleeve hem allowance — 4 cm (1 5/8")
- all other edges — 1 cm (3/8")

Take this into account when laying out the pattern pieces on the fabric.

# CUTTING LAYOUT

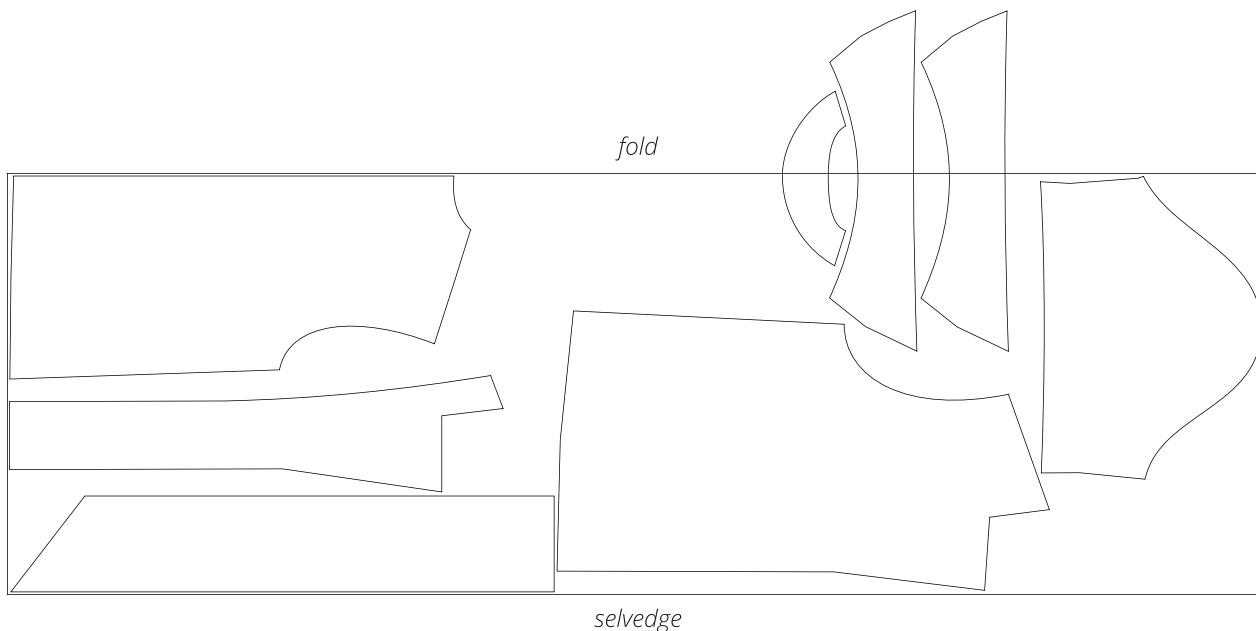
---

Main fabric, 140 cm (55") wide, with a directional print/nap, cut on fold,  
for sizes 34–40 in all heights



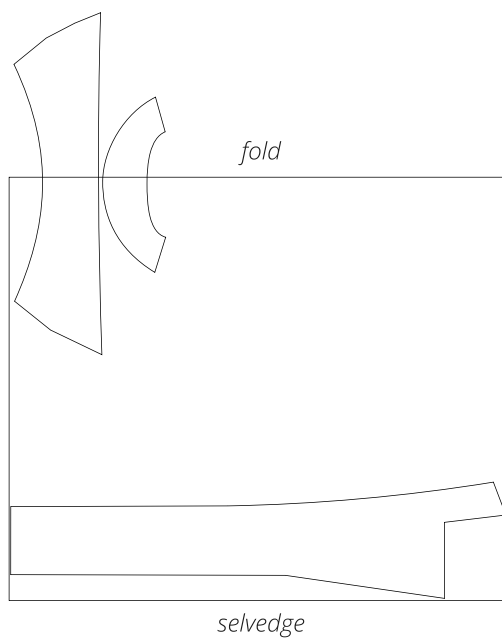
**Important!** Cut one each of the upper collar, undercollar,  
and front facing pieces on a single layer out of the leftover fabric.

Main fabric, 140 cm (55") wide, with a directional print/nap, cut on fold,  
for sizes 42-52 in all heights



**Important!** Cut one each of the upper collar, undercollar,  
and front facing pieces on a single layer out of the leftover fabric.

Interfacing, 140 cm (55") wide, cut on fold,  
for all sizes in all heights



**Important!** Cut one each of the upper collar and front facing pieces  
on a single layer out of the leftover fabric

**READY? LET'S GET SEWING!**

---



1. Place the front and back pieces right sides together. Align the shoulder and side edges and pin. Machine-stitch, backstitching at the beginning and end of the seam.



2. Overlock the shoulder and side seam allowances, with the back piece facing up. Press the seams flat. Press the side seam allowances towards the front piece.



3. Press the shoulder seam allowances towards the front piece.



4. Fold and press the tie belt seam allowances to the wrong side along the two long edges and the angled short edge.



5. Press the tie belt seam allowances again to the wrong side, aligning the edge with the previously pressed fold.