

# FROM THE FOUNDER OF THE VIKISEWS® BRAND

---



Back in 2016, when I started making my first sewing patterns and instruction manuals, my main goal was to solve the problems I personally faced at the beginning of my sewing journey: the lack of stylish patterns that provide a great fit and contain clear sewing instructions. That's how Vikisews was born—a brand designed to help you create fashionable, on-trend clothing with your own hands.



The sewing instructions we create is the result of our team's careful, meticulous work. May they help you develop your sewing hobby—or even turn it into your life's work! Enjoy every step of the sewing process and create a thoughtful, stylish wardrobe!

If you have any questions, we're always here to help: [info@vikisews.com](mailto:info@vikisews.com)



## MANON PATTERN DESCRIPTION

---

Manon is a close-fitting blouse with a stand collar. The front is fitted with waist and bust darts. The back is fitted with waist darts and a center seam. On the front, there is an asymmetrical pankou fastening. The blouse closes with an invisible zipper in the left side seam. The sleeves are short. There are slits with rounded edges in the side seams. The collar edge, pankou fastening, garment hem, and sleeve hem are finished with contrasting piping. There is topstitching along the piping seams. Manon is above-hip length.



## PLEASE READ BEFORE USE

---

The contents of this pattern are copyright protected and belong exclusively to Vikisews. You may use Vikisews patterns for personal use. It is prohibited to share Vikisews patterns and instructions with third parties, as well as to publish patterns and instructions online for public access. **Non-compliance with the mentioned rules is a violation of the US copyright law and may result in civil liability and criminal prosecution.**

You may use Vikisews patterns for commercial use, to sew custom-made garments and/or create fashion collections, on the condition that the patterns are solely used in a manufacturing setting and are not further shared with individuals.

## TOTAL EASE ALLOWANCE

---

|        | Bust ease   | Waistline ease | Upper arm ease |
|--------|-------------|----------------|----------------|
| cm     | 6.3–3.1     | 5.5–5.4        | 1.7            |
| inches | 2 1/2–1 1/4 | 2 1/8          | 5/8            |

## GARMENT LENGTH, SLEEVE LENGTH

---

| Height, cm  | Center back length, cm | Sleeve length, cm |
|-------------|------------------------|-------------------|
| 1 (154–160) | 45.1–46.9              | 14 – 18.2         |
| 2 (162–168) | 48.1–49.9              | 15 – 19.3         |
| 3 (170–176) | 51.1–52.9              | 16 – 20.2         |
| 4 (178–184) | 54.1–55.9              | 16.9 – 21.2       |

| Height, ft     | Center back length, in | Sleeve length, in |
|----------------|------------------------|-------------------|
| 1 (5'1"–5'3")  | 17 3/4–18 1/2          | 5 1/2–7 1/8       |
| 2 (5'4"–5'6")  | 18 7/8–19 5/8          | 5 7/8–7 5/8       |
| 3 (5'7"–5'9")  | 20 1/8–20 7/8          | 6 1/4–8           |
| 4 (5'10"–6'1") | 21 1/4–22              | 6 5/8–8 3/8       |

## SUGGESTED FABRICS

---

To sew this blouse, choose medium-weight or lightweight, soft, low-stretch or stretchy, opaque or semi-transparent dress-weight fabrics made of natural, artificial, blended, or synthetic fibers.

The following fabrics are recommended: satin, sateen, natural or artificial silk.

Fabrics with a blended fiber content are preferable, as they are less prone to wrinkling, generally more resistant to wear and tear, and more durable.

The blouse in the photo is made of natural silk. The fabric is pliable, soft, and stretchy. The fiber content is 92% silk + 8% elastane. The fabric weight is 95 g/m<sup>2</sup>.

# FABRIC AND NOTIONS REQUIREMENTS

1. Main fabric, 140 cm wide, with a directional print/nap, in meters:

| Height, cm  | Size |      |      |      |      |       |      |      |      |
|-------------|------|------|------|------|------|-------|------|------|------|
|             | 34   | 36   | 38   | 40   | 42   | 44-46 | 48   | 50   | 52   |
| 1 (154-160) | 0.65 | 0.65 | 0.7  | 0.7  | 0.75 | 0.8   | 0.85 | 0.85 | 0.9  |
| 2 (162-168) | 0.65 | 0.7  | 0.7  | 0.75 | 0.8  | 0.85  | 0.9  | 0.9  | 0.95 |
| 3 (170-176) | 0.7  | 0.75 | 0.75 | 0.8  | 0.8  | 0.9   | 0.95 | 0.95 | 1    |
| 4 (178-184) | 0.7  | 0.75 | 0.75 | 0.8  | 0.85 | 0.95  | 1    | 1.05 | 1.05 |

Main fabric, 55" wide, with a directional print/nap, in yards:

| Height, ft     | Size |       |     |     |       |       |      |
|----------------|------|-------|-----|-----|-------|-------|------|
|                | 34   | 36-38 | 40  | 42  | 44-46 | 48-50 | 52   |
| 1 (5'1"-5'3")  | 3/4  | 3/4   | 3/4 | 7/8 | 7/8   | 7/8   | 1    |
| 2 (5'4"-5'6")  | 3/4  | 3/4   | 7/8 | 7/8 | 7/8   | 1     | 1    |
| 3 (5'7"-5'9")  | 3/4  | 7/8   | 7/8 | 7/8 | 1     | 1     | 11/8 |
| 4 (5'10"-6'1") | 3/4  | 7/8   | 7/8 | 7/8 | 1     | 11/8  | 11/8 |

**IMPORTANT!** When purchasing fabric, please account for shrinkage and buy 5% more than required.

1. Lightweight interfacing, knit or woven, 140 cm (55") wide, for all sizes and heights — 0.1 m (1/8 yd).
2. One invisible zipper, 25 cm (10") long, for all sizes and heights.
3. Satin piping with cord, in meters:

| Size   | 34    | 36    | 38   | 40    | 42    | 44    | 46    | 48    | 50    | 52    |
|--------|-------|-------|------|-------|-------|-------|-------|-------|-------|-------|
| meters | 2.55  | 2.65  | 2.75 | 2.85  | 2.95  | 3.05  | 3.15  | 3.25  | 3.3   | 3.4   |
| yards  | 2 3/4 | 2 7/8 | 3    | 3 1/8 | 3 1/4 | 3 3/8 | 3 1/2 | 3 1/2 | 3 5/8 | 3 3/4 |

4. Two pankou fasteners.
5. Matching thread — 5 spools (1 spool for the sewing machine + 4 spools for the overlocker).

# TOOLS AND EQUIPMENT

---

- sewing machine for construction
- overlocker for finishing raw edges. This may be replaced with a stretch overlock stitch or a zigzag stitch on the sewing machine (overlock or zigzag stitch width 2–3 mm, stitch length 2.5 mm)
- invisible zipper foot for the sewing machine
- one-sided foot for the sewing machine

# PATTERN PIECES LIST

---

## 1. From main fabric:

- front — cut 1
- right front yoke — cut 1
- back — cut 2
- sleeve — cut 2
- stand collar — cut 2
- front yoke binding — cut 1
- front binding — cut 1
- front hem binding — cut 1
- back hem binding — cut 1
- sleeve hem binding — cut 2

## 2. From interfacing:

- stand collar — cut 2

*IMPORTANT! Don't forget to transfer all pattern markings and notches onto the fabric.*

*IMPORTANT! The pattern pieces that have the "face" inscription on them should be placed with the blank side onto the right side of fabric when cutting.*

# SEAM ALLOWANCES

---

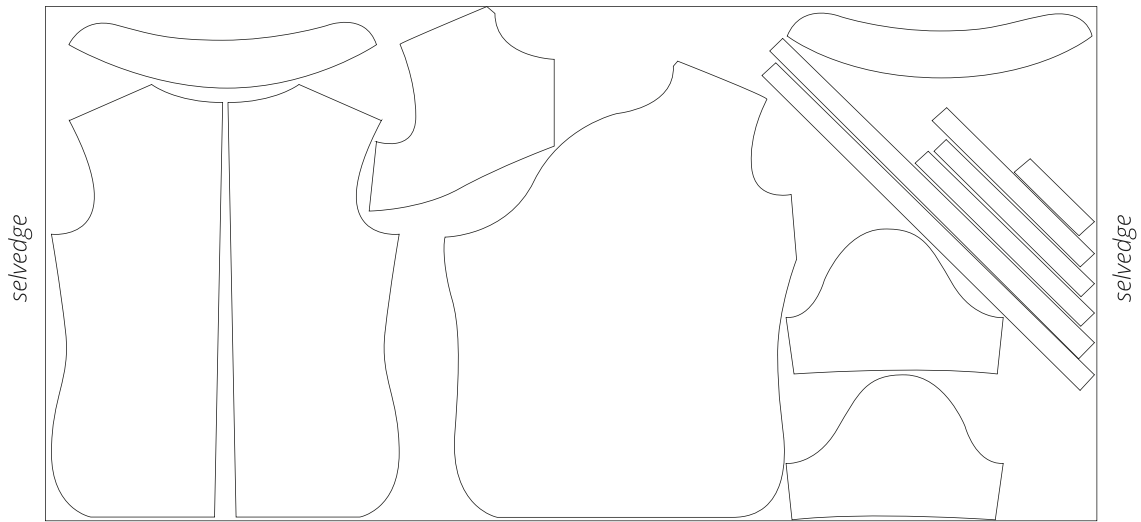
All pattern pieces include 1 cm (3/8") seam allowances.

Take this into account when laying out the pattern pieces on the fabric.

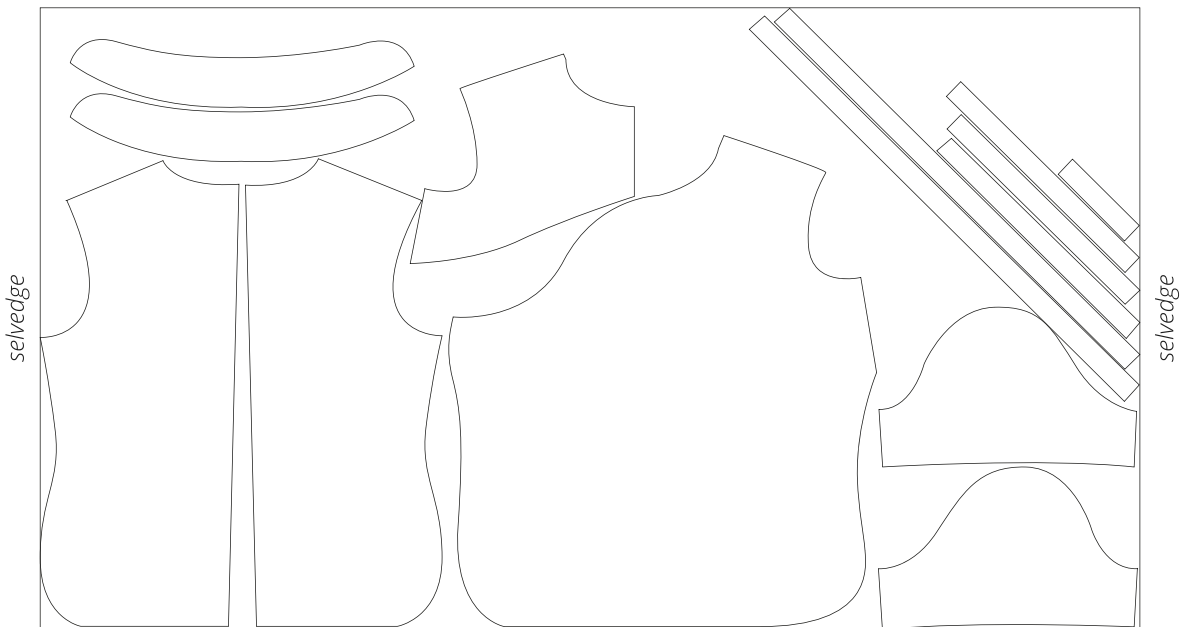
# CUTTING LAYOUT

---

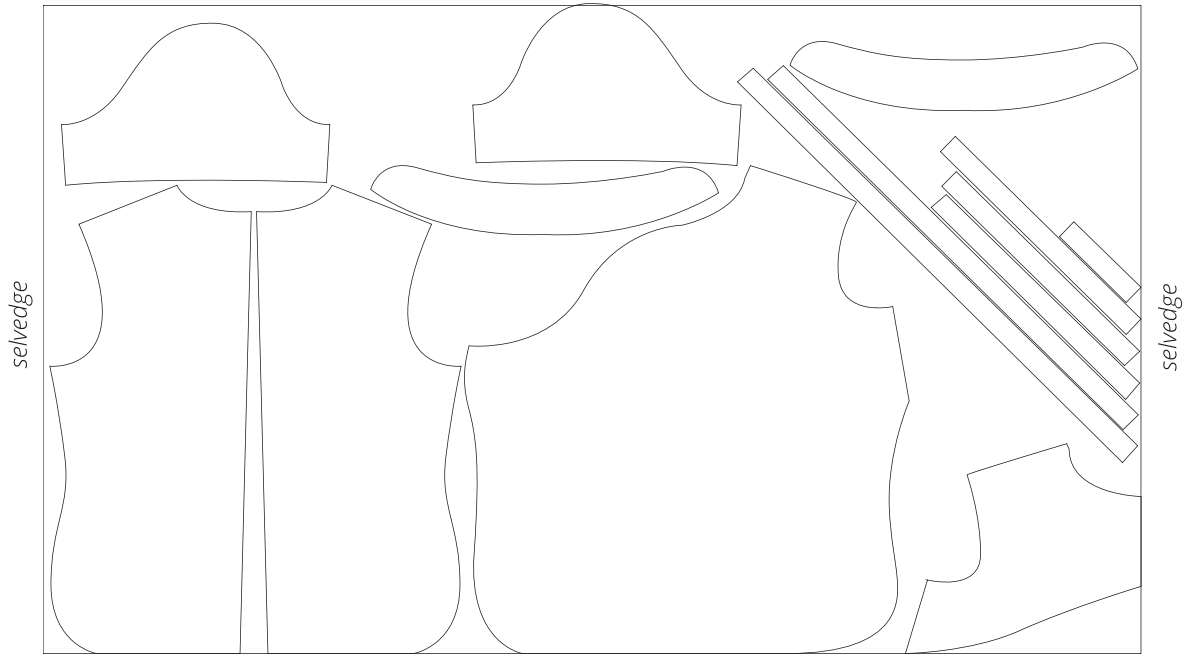
Main fabric, 140 cm (55") wide, with a directional print/nap, cut on a single layer, for size 34 in all heights



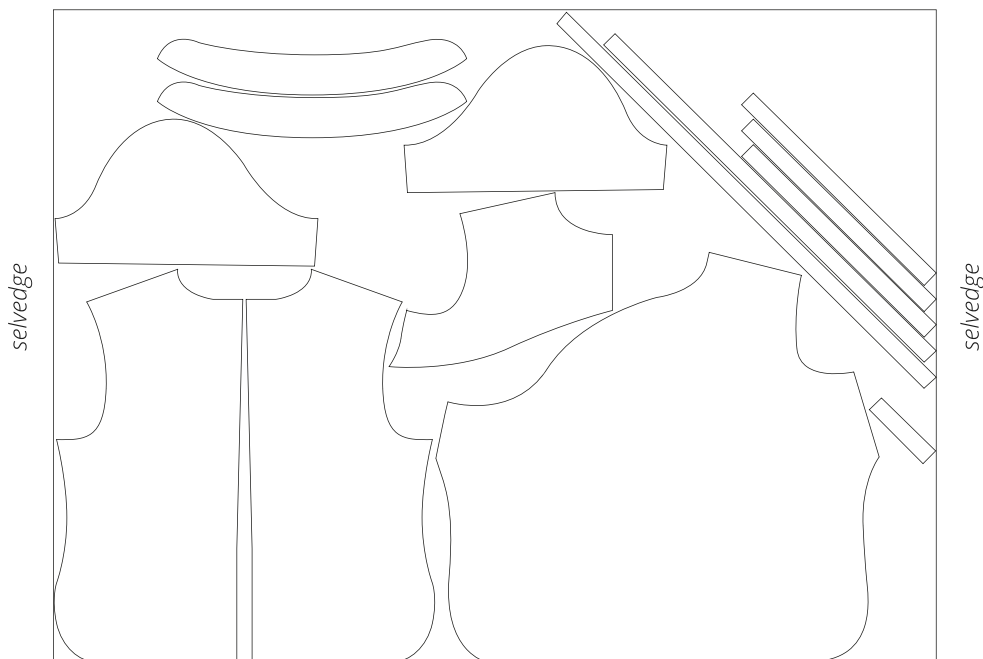
Main fabric, 140 cm (55") wide, with a directional print/nap, cut on a single layer, for sizes 36–40 in all heights



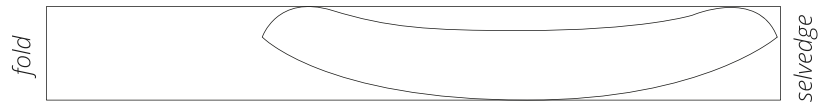
Main fabric, 140 cm (55") wide, with a directional print/nap, cut on a single layer,  
for size 42 in all heights



Main fabric, 140 cm (55") wide, with a directional print/nap, cut on a single layer,  
for sizes 44-52 in all heights



Interfacing, 140 cm (55") wide, cut on fold,  
for all sizes in all heights



**READY? LET'S GET SEWING!**

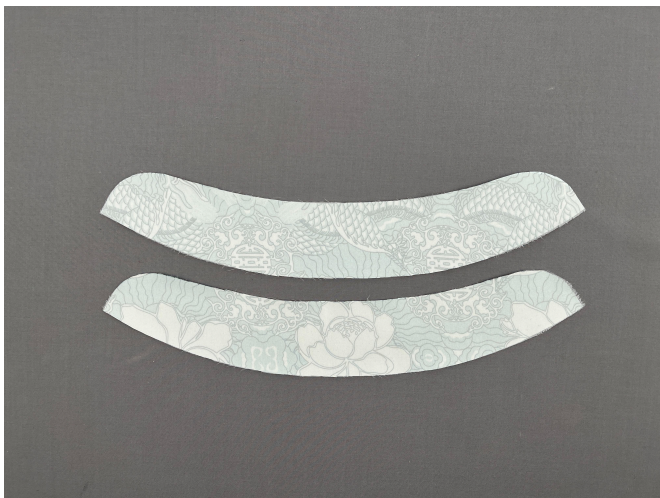
---

## INTERFACING THE MAIN GARMENT PIECES

We recommend testing your interfacing on a scrap of fabric before applying it to the main pieces. Check your iron's temperature and steam settings (check if it's safe to use steam on your main fabric). Check how long it takes for the interfacing to bond.

To interface, put the fusible side of the interfacing onto the wrong side of the fabric piece (or a section thereof) and press with the iron. Do not iron the piece, but instead press it section by section, holding it down with the iron for a few seconds until that section is adhered and then pressing down the next section. You may use a cotton pressing cloth to protect your iron sole.

Once the interfacing is fused, leave the piece on a hard flat surface for 15 minutes for it to cool down.



**Fully interface the following pieces:**

- stand collar — 2 pieces

# TOP GARMENT FITTING

---



We recommend making a toile or assembling the garment out of the main fabric for an initial fitting before proceeding to construction.

Use calico or a fabric similar to the chosen main fabric in terms of properties to make a toile.

If you are doing the first fitting using the main fabric, cut the pieces with additional seam allowances.

**Main rules of the toile fitting or the initial garment fitting:**

1. Thread-trace the center front line.
2. Assemble the garment along the side seams and shoulder seams.
3. Following the notches, assemble the garment along the main construction lines:
  - side seams;
  - shoulder seams;
  - darts;
  - assemble the sleeves and baste them into the armholes.
4. Baste the zipper.
5. Fold and baste the garment hem and sleeve hems.

**Assemble the garment using one of the following methods:**

- machine-stitch (4–5 mm stitch length);
- hand-baste (approximately 1 cm [3/8"] stitch length).



4. Machine-stitch the darts, backstitching at the raw edge of the bust dart only. Leave long thread tails at the dart points.



5. Tie the thread tails into knots and hide them inside the dart bulk using a needle.

6. Press the bust dart flat.



7. Press the bust dart flat.