

FROM THE FOUNDER OF THE #VIKISEWS BRAND



Back in 2016, when I was working on my first set of sewing instructions, I was trying to write them in such a way that even a complete beginner could easily understand and use them to create their very first garment. These instructions laid the foundation for the Vikisews brand, its vision and its mission. I wanted to create modern patterns with the most detailed and clear instructions.

Now, with each new collection we are constantly improving our instructions, amending them and adding more relevant details. By the time the final product reaches you, our drafters, correctors, and editors would have spent weeks perfecting every word and every photograph. If you compile a few of our instructions together, you will get a sewing manual that will assist you in sewing all kinds of garments at any difficulty level.

And I would be very happy if these instructions helped you to turn your hobby into a lifelong passion... Enjoy the process! Create your ultimate dream wardrobe! Wear your garments proudly for years to come!

If you have any questions, please contact us at info@vikisews.com - we are always there to help.



NUNZIA PATTERN DESCRIPTION

Nunzia is a close-fitting dress with a waistline seam and a flared skirt. The front bodice consists of two parts forming an asymmetrical cutout that continues to the left shoulder. The neckline features an asymmetrical grown-on stand collar. There is a pleat on the left shoulder. The set-in sleeves are long and close-fitting. Nunzia is below-knee length.



IMPORTANT!

The contents of this pattern are copyright protected and belong exclusively to Vikisews. You may use Vikisews patterns for personal use. It is prohibited to share Vikisews patterns and instructions with third parties, as well as to publish patterns and instructions online for public access. **Non-compliance with the mentioned rules is a violation of the US copyright law and may result in civil liability and criminal prosecution.**

You may use Vikisews patterns for commercial use, to sew custom-made garments and/or create fashion collections, on the condition that the patterns are solely used in a manufacturing setting and are not further shared with individuals.

TOTAL EASE ALLOWANCE

	Bust ease	Waistline ease	Hipline ease	Upper arm ease
cm	0,7-1,5	3,5-5,9	1,8-5,5	-1
inches	1/4 - 5/8	1 3/8 - 2 3/8	3/4 - 2 1/8	-3/8

GARMENT LENGTH, SLEEVE LENGTH

Height, cm	Garment back length from waist down, cm	Sleeve length, cm
1 (154-160)	75.9	60.5
2 (162-168)	78.9	62.5
3 (170-176)	81.9	64.5
4 (178-184)	84.9	66.4

Height, ft	Garment back length from waist down, in	Sleeve length, in
1 (5'1" - 5'3")	30	23 3/4
2 (5'4" - 5'6")	31	24 1/2
3 (5'7" - 5'9")	32 1/4	25 1/2
4 (5'10" - 6'1")	33 1/2	26 1/4

SUGGESTED FABRIC

To sew this dress, choose knit fabrics with the following properties:

- soft, breathable, with a little stretch, medium-weight
- the fiber content can include natural fibers (wool, cotton), artificial fibers (viscose), blends (wool + polyester, cotton + polyester, cotton + elastane, etc.) and synthetics (polyester, polyester + elastane)
- the following fabrics are recommended: ponte di roma, knits.

Attention! We do not recommend lightweight sheer fabrics (chiffon, organza, stretch lace).

The dress in the photos is made from ponte di roma. The fabric is medium-weight, soft, with little stretch. The fiber content is viscose + polyester + elastane.

FABRIC AND NOTIONS REQUIREMENTS

1. Main fabric, 140cm wide, in meters:

	Size									
Height, cm	34	36	38	40	42	44	46	48	50	52
1 (154-160)	1.96 (1.46; 0.5)	2.14 (1.64; 0.5)	2.14 (1.64; 0.5)	2.15 (1.64; 0.51)	2.15 (1.64; 0.51)	2.16 (1.64; 0.52)	2.17 (1.64; 0.53)	2.19 (1.64; 0.55)	2.27 (1.64; 0.63)	2.33 (1.64; 0.69)
2 (162-168)	2.02 (1.51; 0.51)	2.21 (1.7; 0.51)	2.21 (1.7; 0.51)	2.22 (1.7; 0.52)	2.22 (1.7; 0.52)	2.23 (1.7; 0.53)	2.24 (1.7; 0.54)	2.24 (1.7; 0.54)	2.34 (1.7; 0.64)	2.4 (1.7; 0.7)
3 (170-176)	2.08 (1.56; 0.52)	2.28 (1.76; 0.52)	2.28 (1.76; 0.52)	2.29 (1.76; 0.53)	2.29 (1.76; 0.53)	2.3 (1.76; 0.54)	2.3 (1.76; 0.54)	2.31 (1.76; 0.55)	2.41 (1.76; 0.65)	2.56 (1.76; 0.8)
4 (178-184)	2.14 (1.61; 0.53)	2.35 (1.82; 0.53)	2.35 (1.82; 0.53)	2.36 (1.82; 0.54)	2.36 (1.82; 0.54)	2.4 (1.82; 0.58)	2.44 (1.82; 0.62)	2.51 (1.82; 0.69)	2.62 (1.82; 0.8)	2.66 (1.82; 0.84)

Main fabric, 55" wide, in yards:

	Size									
Height, ft	34	36	38	40	42	44	46	48	50	52
1 (5'1" - 5'3")	2 1/8 (1 5/8; 1/2)	2 3/8 (1 3/4; 1/2)	2 3/8 (1 3/4; 1/2)	2 3/8 (1 3/4; 1/2)	2 3/8 (1 3/4; 1/2)	2 3/8 (1 3/4; 5/8)	2 3/8 (1 3/4; 5/8)	2 3/8 (1 3/4; 5/8)	2 1/2 (1 3/4; 3/4)	2 1/2 (1 3/4; 3/4)
1 (5'1" - 5'3")	2 1/4 (1 5/8; 1/2)	2 3/8 (1 7/8; 1/2)	2 3/8 (1 7/8; 1/2)	2 3/8 (1 7/8; 5/8)	2 3/8 (1 7/8; 5/8)	2 1/2 (1 7/8; 5/8)	2 1/2 (1 7/8; 5/8)	2 1/2 (1 7/8; 5/8)	2 1/4 (1 7/8; 3/4)	2 5/8 (1 7/8; 3/4)
1 (5'1" - 5'3")	2 1/4 (1 1/2; 5/8)	2 1/2 (1 7/8; 5/8)	2 1/2 (1 7/8; 5/8)	2 1/2 (1 7/8; 5/8)	2 1/2 (1 7/8; 5/8)	2 1/2 (1 7/8; 5/8)	2 1/2 (1 7/8; 5/8)	2 1/2 (1 7/8; 5/8)	2 5/8 (1 7/8; 3/4)	2 3/4 (1 7/8; 7/8)
4 (5'10" - 6'1")	2 3/8 (1 3/4; 1/2)	2 5/8 (2; 5/8)	2 5/8 (2; 5/8)	2 5/8 (2; 5/8)	2 5/8 (2; 5/8)	2 5/8 (2; 5/8)	2 5/8 (2; 5/8)	2 3/4 (2; 3/4)	2 7/8 (2; 7/8)	2 7/8 (2; 7/8)

Main fabric, 150cm wide, in meters:

Height, cm	Size									
	34	36	38	40	42	44	46	48	50	52
1 (154-160)	1.96 (1.46; 0.5)	1.96 (1.46; 0.5)	1.96 (1.46; 0.5)	2.15 (1.64; 0.51)	2.15 (1.64; 0.51)	2.16 (1.64; 0.52)	2.17 (1.64; 0.53)	2.17 (1.64; 0.53)	2.18 (1.64; 0.54)	2.19 (1.64; 0.55)
2 (162-168)	2.02 (1.51; 0.51)	2.02 (1.51; 0.51)	2.02 (1.51; 0.51)	2.23 (1.7; 0.53)	2.23 (1.7; 0.53)	2.24 (1.7; 0.54)	2.24 (1.7; 0.54)	2.24 (1.7; 0.54)	2.25 (1.7; 0.55)	2.25 (1.7; 0.55)
3 (170-176)	2.08 (1.56; 0.52)	2.08 (1.56; 0.52)	2.08 (1.56; 0.52)	2.29 (1.76; 0.53)	2.29 (1.76; 0.53)	2.3 (1.76; 0.54)	2.31 (1.76; 0.55)	2.31 (1.76; 0.55)	2.32 (1.76; 0.56)	2.32 (1.76; 0.56)
4 (178-184)	2.14 (1.61; 0.53)	2.14 (1.61; 0.53)	2.14 (1.61; 0.53)	2.36 (1.82; 0.54)	2.36 (1.82; 0.54)	2.37 (1.82; 0.55)	2.38 (1.82; 0.56)	2.38 (1.82; 0.56)	2.38 (1.82; 0.56)	2.39 (1.82; 0.57)

Main fabric, 60" wide, in yards:

Height, ft	Size									
	34	36	38	40	42	44	46	48	50	52
1 (5'1" - 5'3")	2 1/8 (1 5/8; 1/2)	2 1/8 (1 5/8; 1/2)	2 1/8 (1 5/8; 1/2)	2 3/8 (1 3/4; 1/2)	2 3/8 (1 3/4; 1/2)	2 3/8 (1 3/4; 5/8)	2 3/8 (1 3/4; 5/8)	2 3/8 (1 3/4; 5/8)	2 3/8 (1 3/4; 5/8)	2 3/8 (1 3/4; 5/8)
1 (5'1" - 5'3")	2 1/4 (1 5/8; 1/2)	2 1/4 (1 5/8; 1/2)	2 1/4 (1 5/8; 1/2)	2 1/2 (1 7/8; 5/8)	2 1/2 (1 7/8; 5/8)	2 1/2 (1 7/8; 5/8)	2 1/2 (1 7/8; 5/8)	2 1/2 (1 7/8; 5/8)	2 1/2 (1 7/8; 5/8)	2 1/2 (1 7/8; 5/8)
1 (5'1" - 5'3")	2 1/4 (1 3/4; 5/8)	2 1/4 (1 3/4; 5/8)	2 1/4 (1 3/4; 5/8)	2 1/2 (1 7/8; 5/8)	2 1/2 (1 7/8; 5/8)	2 1/2 (1 7/8; 5/8)	2 1/2 (1 7/8; 5/8)	2 1/2 (1 7/8; 5/8)	2 1/2 (1 7/8; 5/8)	2 1/2 (1 7/8; 5/8)
4 (5'10" - 6'1")	2 3/8 (1 3/4; 5/8)	2 3/8 (1 3/4; 5/8)	2 3/8 (1 3/4; 5/8)	2 5/8 (2; 5/8)	2 5/8 (2; 5/8)	2 5/8 (2; 5/8)	2 5/8 (2; 5/8)	2 5/8 (2; 5/8)	2 5/8 (2; 5/8)	2 5/8 (2; 5/8)

IMPORTANT! When purchasing fabric, please account for shrinkage and buy 5% more than required.

2. Lightweight fusible knit interfacing, 140cm (55") wide, for all sizes and heights - 0,1m (1/8 yds)
3. Matching thread - 5 spools (1 spool for the sewing machine + 4 spools for the overlocker)

TOOLS AND EQUIPMENT

- sewing machine for construction
- overlocker for construction and for finishing raw edges. This may be replaced with a stretch overlock stitch or a zigzag stitch on the sewing machine (overlock or zigzag stitch width 2-3mm, stitch length 2.5mm)

Important! We recommend using specialty needles when working with knit fabrics (for example, STRETCH, SUPER STRETCH, JERSEY, etc.). These are ballpoint needles, so they part the threads of the fabric you are stitching rather than piercing them.

PATTERN PIECES LIST

1. From main fabric:

- left front - cut 1
- right front - cut 1
- front skirt - cut 1 on fold
- back - cut 1
- back skirt - cut 1 on fold
- sleeve - cut 2

IMPORTANT! Don't forget to transfer all the notches from the pattern to your fabric.

2. From interfacing:

- to interface the shoulder edges, cut 2 strips that are 1,5cm (5/8") wide and as long as:
 - right shoulder length + 1cm (3/8")
 - left shoulder length + shoulder cutout length + 1cm (3/8")
- to interface the edges of the cutout on the right and left front pieces, cut 2 strips that are 1,5cm (5/8") wide and as long as the cutout edges on the pattern.

Seam allowances are interfaced with strips of interfacing. The strips should be cut on the cross grain (perpendicular to the selvedge).

SEAM ALLOWANCES

Pattern pieces include the following seam allowances:

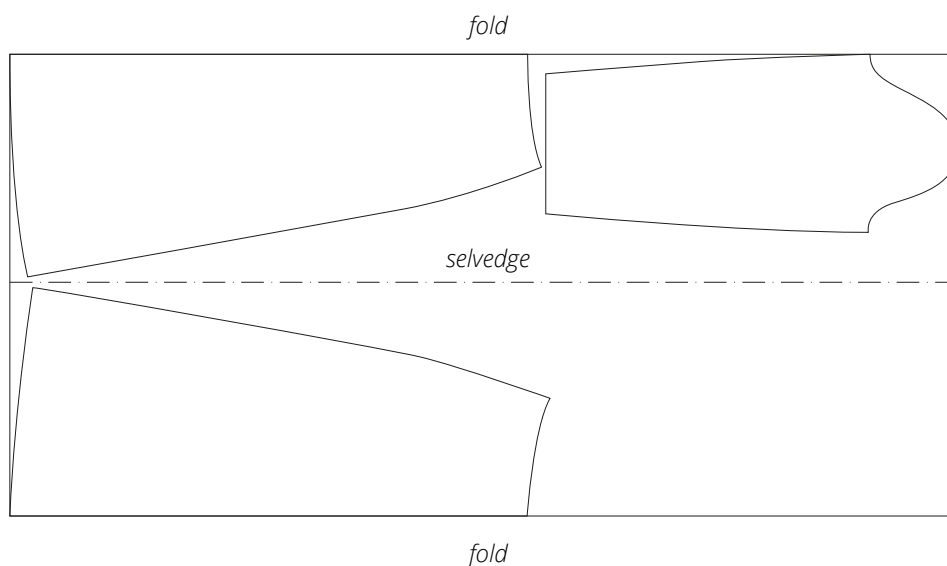
- along the cutout edges on the right and left front pieces - 1,5cm (5/8")
- garment hem - 2cm (3/4")
- sleeve hems - 2cm (3/4")
- all other edges - 1cm (3/8")

Take this into account when laying out pattern pieces on the fabric.

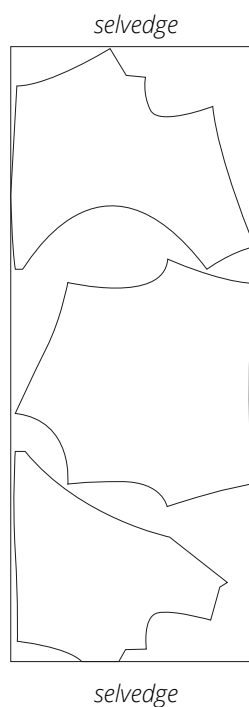
CUTTING LAYOUT

Main fabric, 140cm (55") wide, for size 34 in all heights; 150cm (60") wide, for sizes 34-38 in all heights, cut in two parts, for a non-directional print

1st part, with two folds



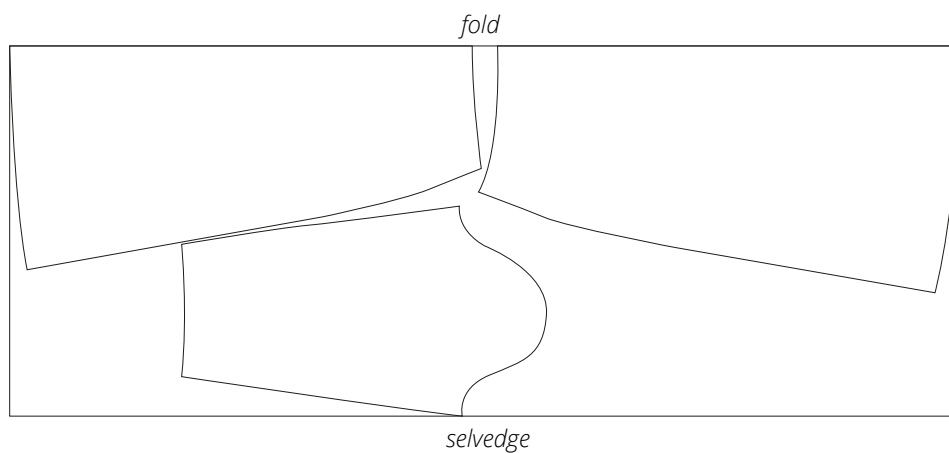
2nd part, single layer



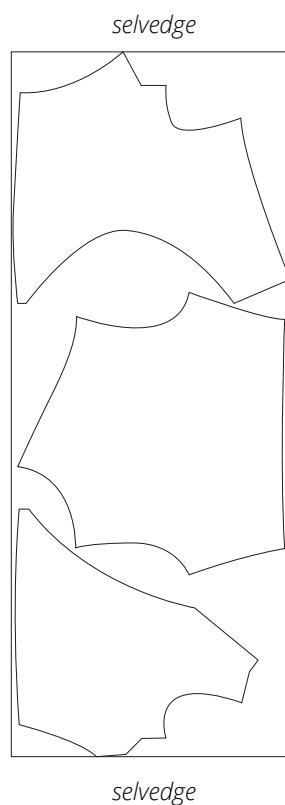
Attention! When cutting in a single layer, place pattern pieces on the right side of the fabric.

Main fabric, 140cm (55") wide, for sizes 36-52 in all heights; 150cm (60") wide, for sizes 40-52 in all heights, cut in two parts, for a non-directional print

1st part, on fold



2nd part, single layer



Attention! When cutting in a single layer, place pattern pieces on the right side of the fabric.

READY? LET'S GET SEWING!



With the right side facing up, overlock the cutout seam allowances on the right and left front pieces.

This seam and all similar seams throughout the instructions are done on a 4-thread overlocker. It can be replaced with a stretch stitch or zigzag on a sewing machine.



Place the right and left front pieces right sides together, pin at the notches, baste.

Stitch between the notches on a sewing machine, backstitching at the beginning and end of the seam.



Turn the cutout seam allowances under and baste by hand.